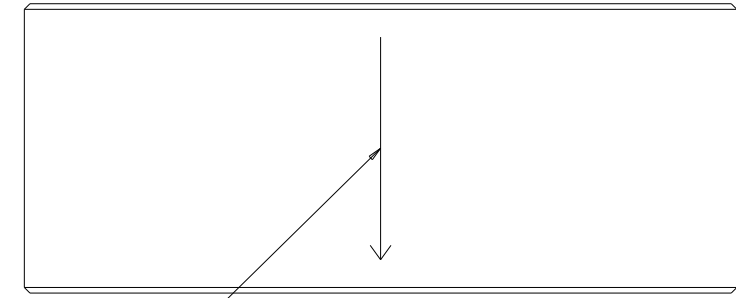
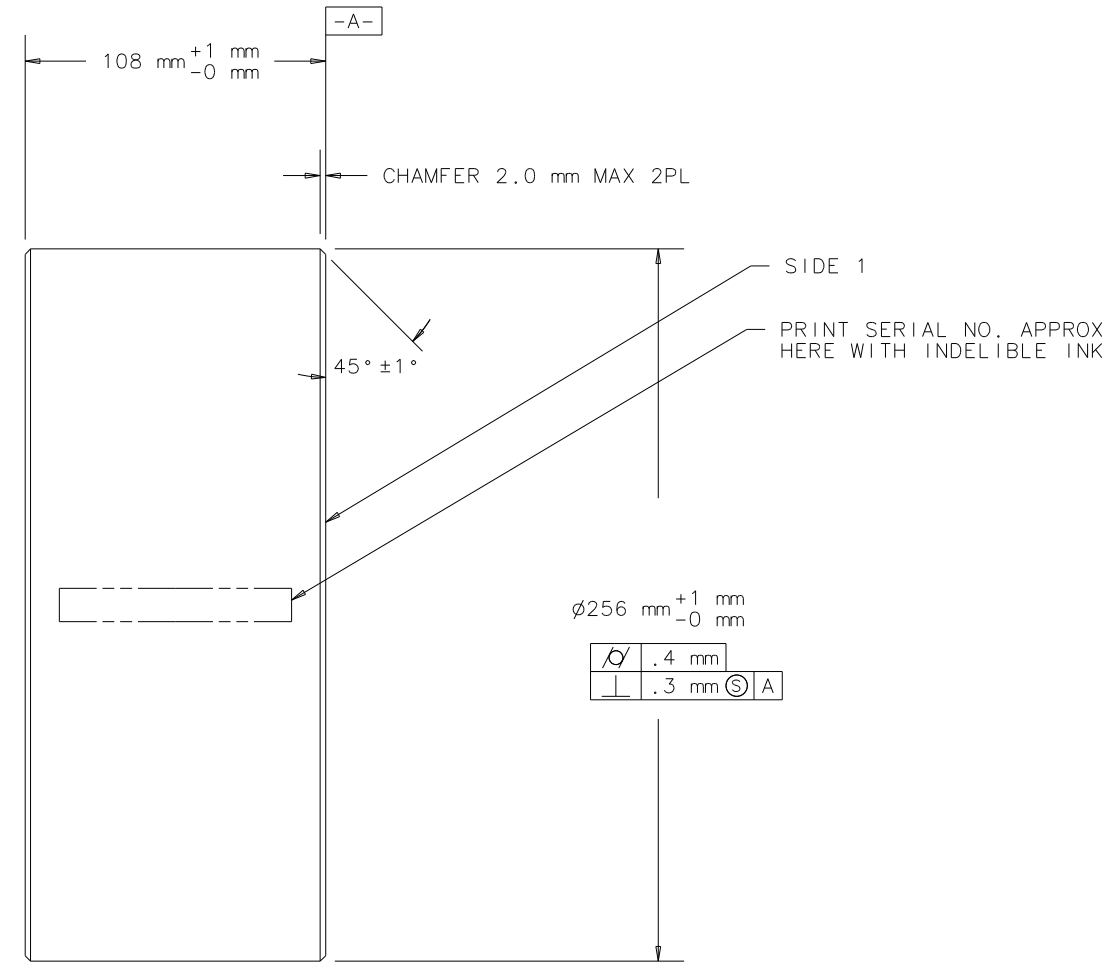
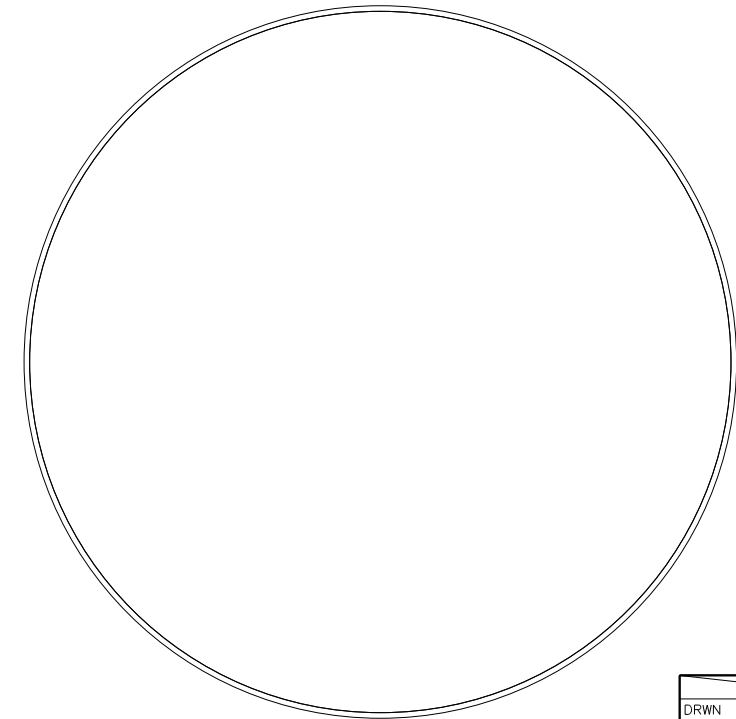


NOTES: (UNLESS OTHERWISE SPECIFIED)
 1. DRAWING TO BE INTERPRETED PER
 ANSI Y14.5M-1994.

| REV | SHEETS | DATE | DRWN | DCC | DCN/DESCRIPTION |
|-----|--------|----------|----------|-----|------------------------------|
| 00 | - | - | - | - | - |
| A | - | 06-20-96 | C CONLEY | | E960103-00-D/INITIAL RELEASE |



MARK "TOP" OF OPTIC (CORRESPONDING
 TO "TOP" ON PHASE MAPS) WITH
 INDELIBLE INK LINE 80 mm LONG
 PERPENDICULAR TO -A- WITHIN 1 mm,
 ARROW POINTS TO SIDE 1



| | | | | | | | |
|---|----------|------|--------|---|-------------|--------------|--------|
| DRWN | C CONLEY | DATE | 6-6-96 | CALIFORNIA INSTITUTE OF TECHNOLOGY MASSACHUSETTS INSTITUTE OF TECHNOLOGY | | LIGO PROJECT | |
| CHKD | | | | CAD FILE: /home/conley/opticsHW/blank_core_optic.asc | | | |
| ENGR | | | | CORE OPTIC BLANK | | | |
| APPD | | | | | | | |
| MATERIAL: FUSED SILICA PER RELEVANT SPECIFICATION | | | | DO NOT SCALE DRAWING | | | |
| SCALE: NTS | | SIZE | D | DRAWING NUMBER | D960794-A-D | SHEET | 1 OF 1 |
| | | REV | A | | | | |