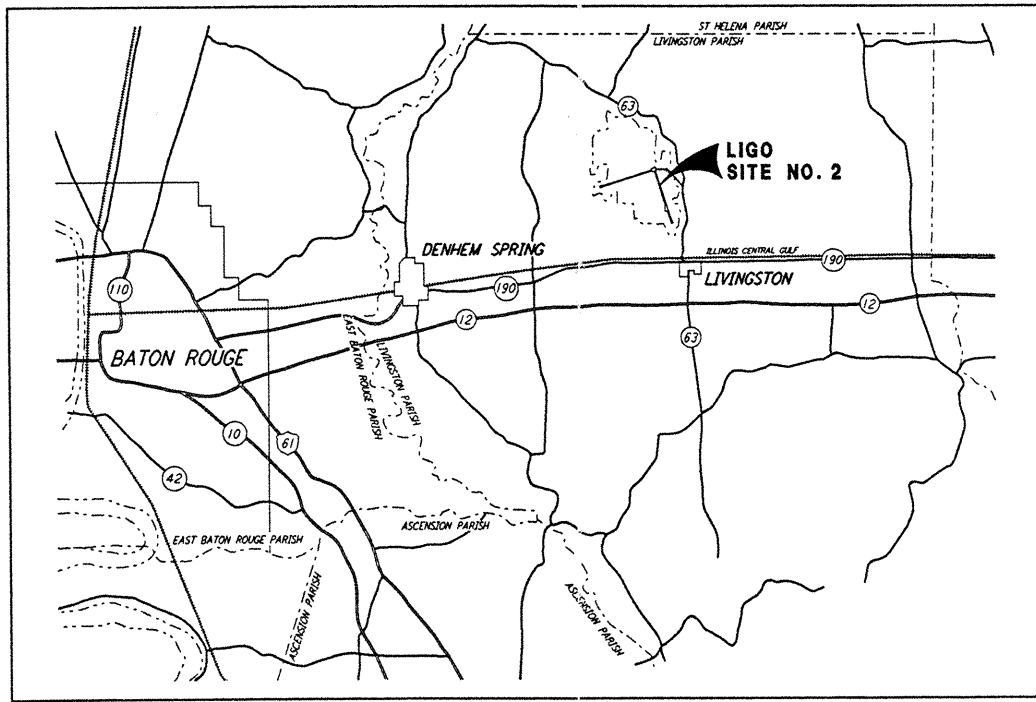
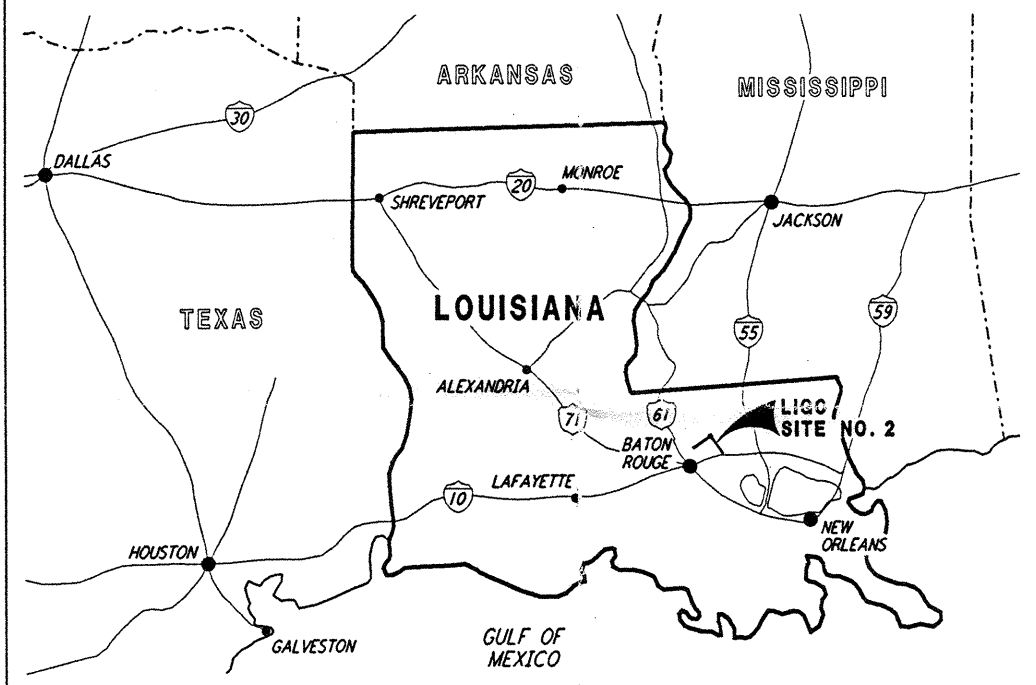
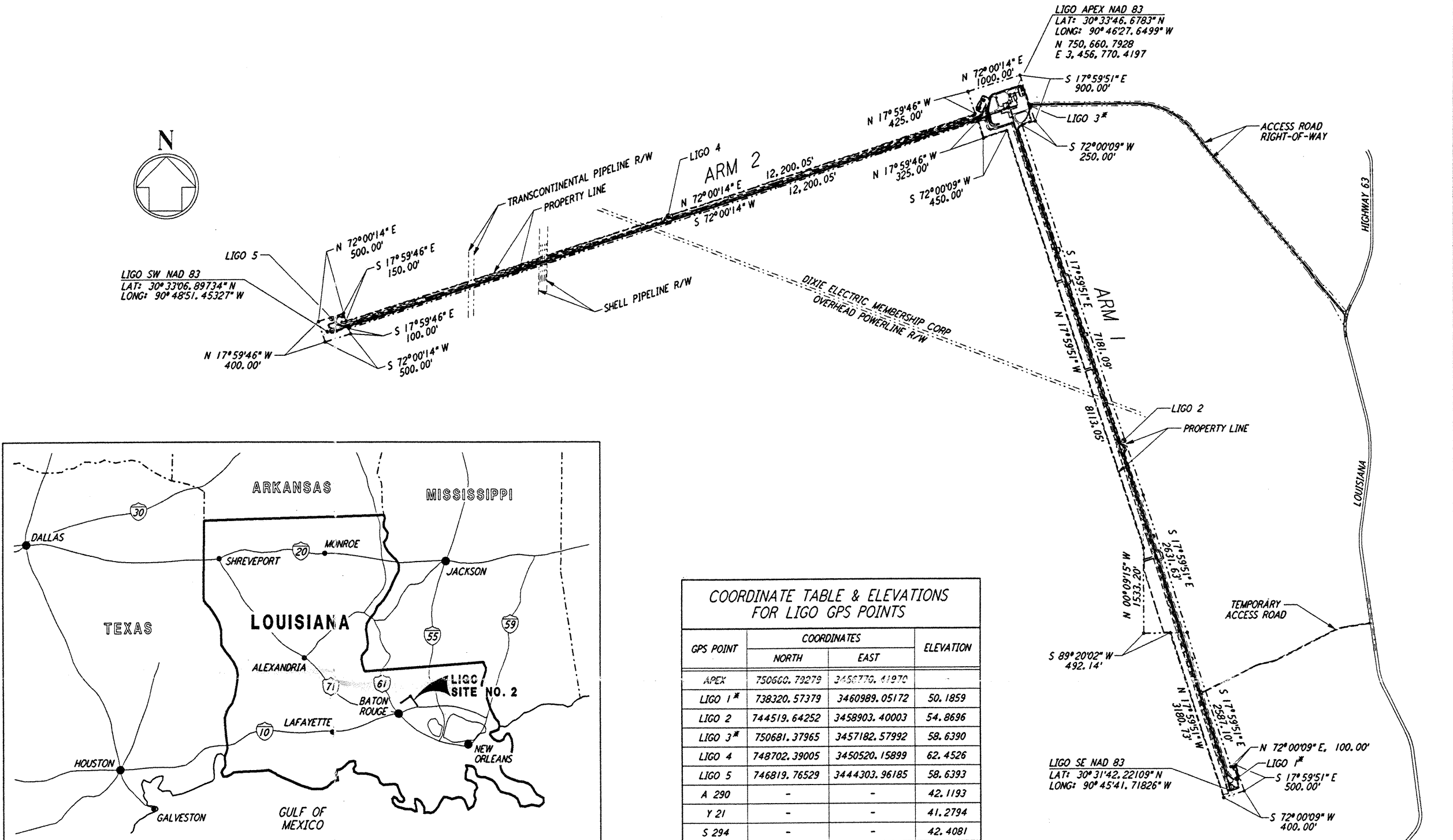
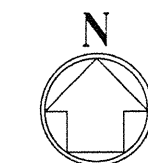


This document and the design it covers are the property of PARSONS. They are loaned only with the borrower's expressed written agreement that they will not be reproduced, copied, loaned, exhibited, or used in any other way, except by written consent from PARSONS to the borrower.

DRAWING INDEX	
DRAWING NUMBER	DRAWING TITLE
LA-C-001	DRAWING INDEX, LOCATION & VICINITY MAPS
LA-C-002	GENERAL NOTES, LEGEND & ABBREVIATIONS
LA-C-003	DRAWING MATRIX
LA-C-004	TYPICAL SECTIONS AND DETAILS
LA-C-005	CORNER STATION PLOT PLAN
LA-C-006	CORNER STATION PLOT PLAN, ENLARGED PLANS
LA-C-007	CORNER STATION GRADING PLAN
LA-C-008	CORNER STATION GRADING PLAN, ENLARGED PLANS
LA-C-009	CORNER STATION UTILITY PLAN
LA-C-010	CORNER STATION UTILITY PLAN, ENLARGED PLANS
LA-C-011	SOUTHWEST ARM, PLAN AND PROFILE, STA 0+00 TO STA 14+00
LA-C-012	SOUTHWEST ARM, PLAN AND PROFILE, STA 14+00 TO STA 28+00
LA-C-013	SOUTHWEST ARM, PLAN AND PROFILE, STA 28+00 TO STA 42+00
LA-C-014	SOUTHWEST ARM, PLAN AND PROFILE, STA 42+00 TO STA 56+00
LA-C-015	SOUTHWEST ARM, PLAN AND PROFILE, STA 56+00 TO STA 70+00
LA-C-016	SOUTHWEST ARM, PLAN AND PROFILE, STA 70+00 TO STA 84+00
LA-C-017	SOUTHWEST ARM, PLAN AND PROFILE, STA 84+00 TO STA 98+00
LA-C-018	SOUTHWEST ARM, PLAN AND PROFILE, STA 98+00 TO STA 112+00
LA-C-019	SOUTHWEST ARM, PLAN AND PROFILE, STA 112+00 TO STA 126+00
LA-C-020	SOUTHWEST ARM, PLAN AND PROFILE, STA 126+00 TO STA 133+00
LA-C-021	SOUTHWEST ARM, PUMP STATION, PLOT PLAN
LA-C-022	SOUTHWEST ARM, PUMP STATION, GRADING PLAN
LA-C-023	SOUTHWEST ARM, PUMP STATION, UTILITY PLAN
LA-C-025	SOUTHWEST ARM, END STATION, PLOT PLAN
LA-C-026	SOUTHWEST ARM, END STATION, GRADING PLAN
LA-C-027	SOUTHWEST ARM, END STATION, UTILITY PLAN
LA-C-031	SOUTHEAST ARM, PLAN AND PROFILE, STA 0+00 TO STA 14+00
LA-C-032	SOUTHEAST ARM, PLAN AND PROFILE, STA 14+00 TO STA 28+00
LA-C-033	SOUTHEAST ARM, PLAN AND PROFILE, STA 28+00 TO STA 42+00
LA-C-034	SOUTHEAST ARM, PLAN AND PROFILE, STA 42+00 TO STA 56+00
LA-C-035	SOUTHEAST ARM, PLAN AND PROFILE, STA 56+00 TO STA 70+00
LA-C-036	SOUTHEAST ARM, PLAN AND PROFILE, STA 70+00 TO STA 84+00
LA-C-037	SOUTHEAST ARM, PLAN AND PROFILE, STA 84+00 TO STA 98+00
LA-C-038	SOUTHEAST ARM, PLAN AND PROFILE, STA 98+00 TO STA 112+00
LA-C-039	SOUTHEAST ARM, PLAN AND PROFILE, STA 112+00 TO STA 126+00
LA-C-040	SOUTHEAST ARM, PLAN AND PROFILE, STA 126+00 TO STA 133+00
LA-C-041	SOUTHEAST ARM, PUMP STATION, PLOT PLAN
LA-C-042	SOUTHEAST ARM, PUMP STATION, GRADING PLAN
LA-C-043	SOUTHEAST ARM, PUMP STATION, UTILITY PLAN
LA-C-045	SOUTHEAST ARM, END STATION, PLOT PLAN
LA-C-046	SOUTHEAST ARM, END STATION, GRADING PLAN
LA-C-047	SOUTHEAST ARM, END STATION, UTILITY PLAN
LA-C-051	SITWORK DETAILS, SHEET 1
LA-C-052	SITWORK DETAILS, SHEET 2
LA-C-053	GRADING SECTIONS & DETAILS, SHEET 1
LA-C-054	GRADING SECTIONS & DETAILS, SHEET 2
LA-C-055	UTILITY DETAILS

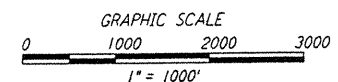


GPS POINT	COORDINATES		ELEVATION
	NORTH	EAST	
APEX	750660.79279	3456770.41970	
LIGO 1#	738320.57379	3460989.05172	50.1859
LIGO 2	744519.64252	3458903.40003	54.8696
LIGO 3#	750681.37965	3457182.57992	58.6390
LIGO 4	748702.39005	3450520.15899	62.4526
LIGO 5	746819.76529	3444303.96185	58.6393
A 290	-	-	42.1193
Y 21	-	-	41.2794
S 294	-	-	42.4081

NOTE: GPS COORDINATE POINTS ARE HIGH ACCURACY  
 \* LIGO 1 AND LIGO 3 SHALL BE RE-ESTABLISHED BY CONTRACTOR IN NEW LOCATION, TO BE DETERMINED.

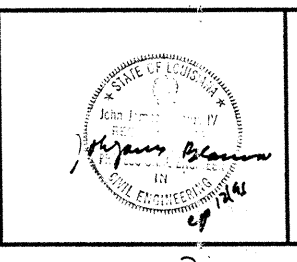
**SURVEY NOTES:**

- PROPERTY LINE LOCATION AND LIGO ACCESS ROAD RIGHT-OF-WAY ARE BY A SURVEY PERFORMED BY ALEX THERIOT JR & ASSOCIATES, INC., DENHAM SPRINGS, DATED MARCH 12, 1993.
- HORIZONTAL AND VERTICAL CONTROLS ARE FROM A VERNON F. MEYER GPS SURVEY, AND ARE AS FOLLOWS:  
 HORIZONTAL CONTROL: ALL BEARINGS AND DISTANCES SHOWN HEREON ARE LAMBERT GRID, NAD 83/92, LOUISIANA SOUTH ZONE (1702).  
 VERTICAL CONTROL: ELEVATIONS SHOWN ARE MEAN SEA LEVEL, DATUM NAVD 88. ELEVATIONS ARE A LEAST SQUARES ADJUSTMENT HOLDING TO NAVD 88 VALUES OF MGS ADJUSTED ELEVATION OF BENCHMARK A 290, Y 21 AND S 294 (VERT. ORDER - FIRST CLASS 1)
- CALTECH WILL PROVIDE FIVE (5) GPS SURVEY MONUMENTS FOR INITIAL CONTROL OF THE WORK. ADDITIONAL (APPROXIMATELY 15) FIRST ORDER GPS MONUMENTS ARE NECESSARY TO ACCURATELY PLACE THE EQUIPMENT.
- ROUGH GRADING DRAWINGS WERE BASED ON AN APEX COORDINATE OF N 750662.6458, E 3456770.8115. THIS ROUGH GRADING APEX POINT, GRID, OR OTHER ROUGH GRADING COORDINATES SHALL NOT BE USED FOR THE CONTROL OF THE WORK IN THIS CONTRACT.



DRAWING NO.	DESCRIPTION	NO.	DATE	BY	CHKD	ENGR	PROJ	DESCRIPTION

ISSUED FOR CONSTRUCTION	DRAWN	WRB	11-15-96
CHECKED	WL	11-15-96	
ENGINEER	JPS	11/15/96	
PROJ			



**PARSONS**  
 100 WEST WALNUT STREET  
 PASADENA, CALIFORNIA

**LIGO**  
 CALIFORNIA INSTITUTE OF TECHNOLOGY  
 MASSACHUSETTS INSTITUTE OF TECHNOLOGY

LASER INTERFEROMETER  
 GRAVITATIONAL-WAVE OBSERVATORY  
 SITE NO. 2 - LIVINGSTON, LOUISIANA

CIVIL  
 DRAWING INDEX  
 LOCATION & VICINITY  
 MAPS

AS NOTED PP150969 8094  
**LA-C-001**