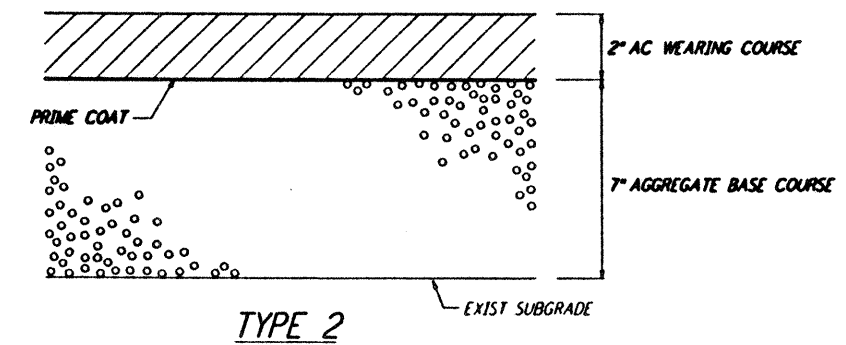
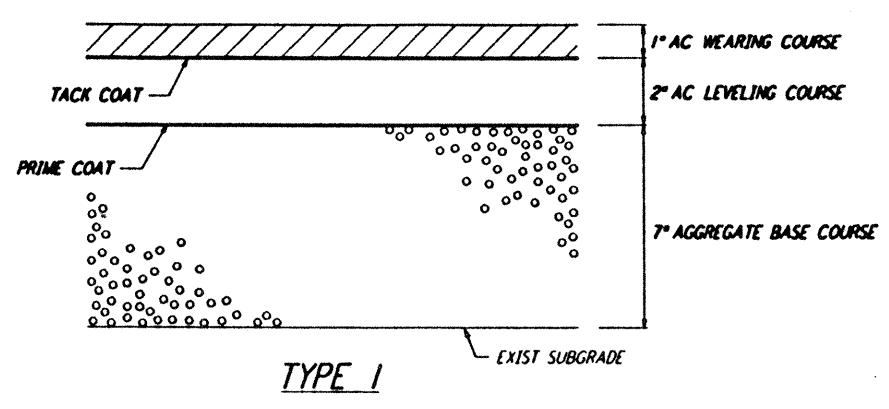
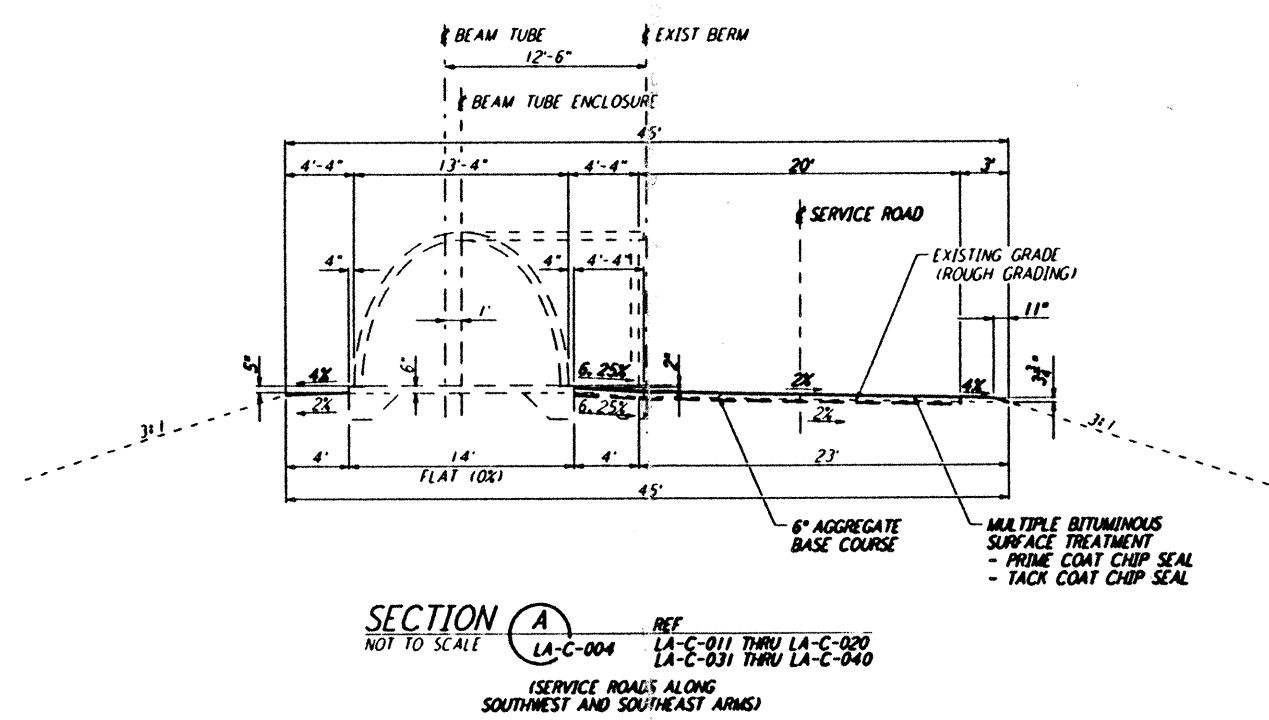
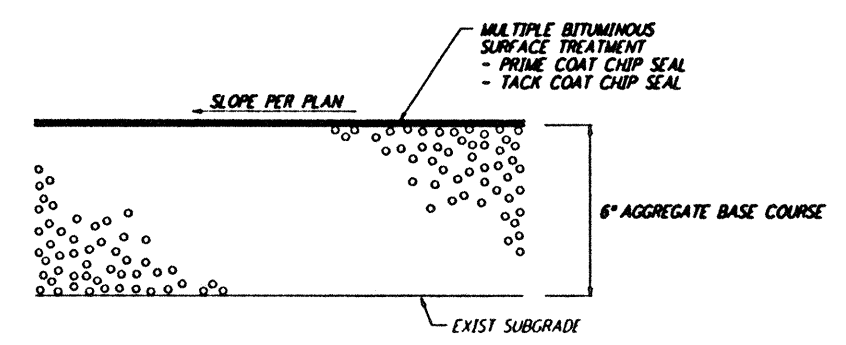


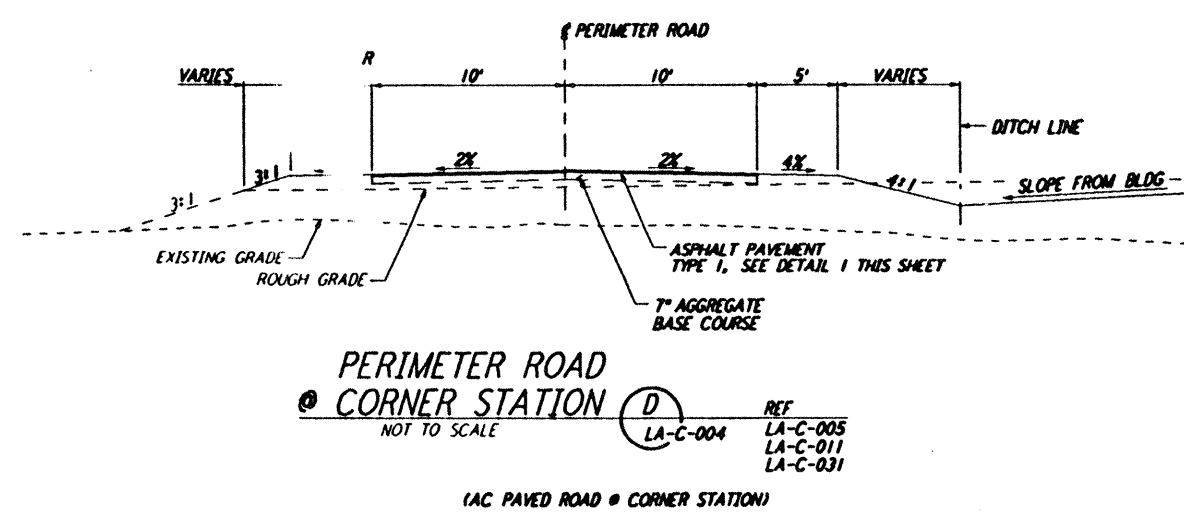
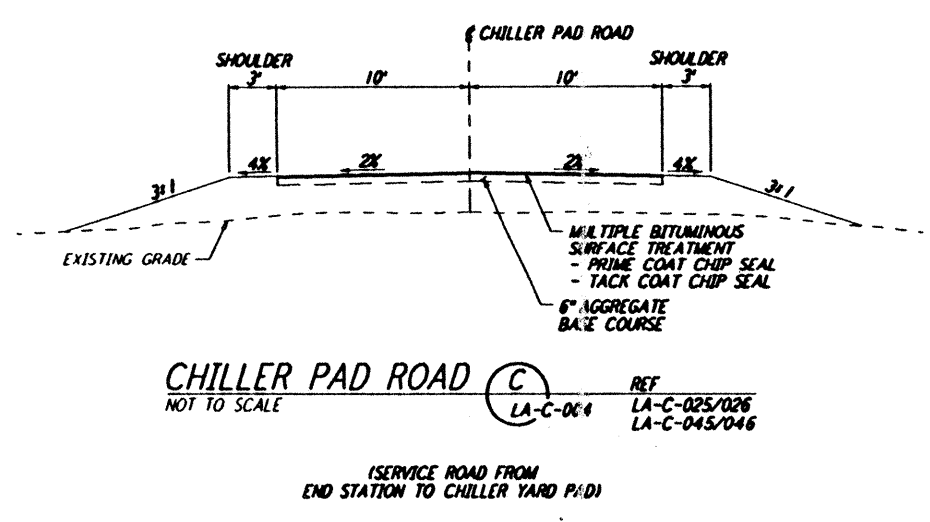
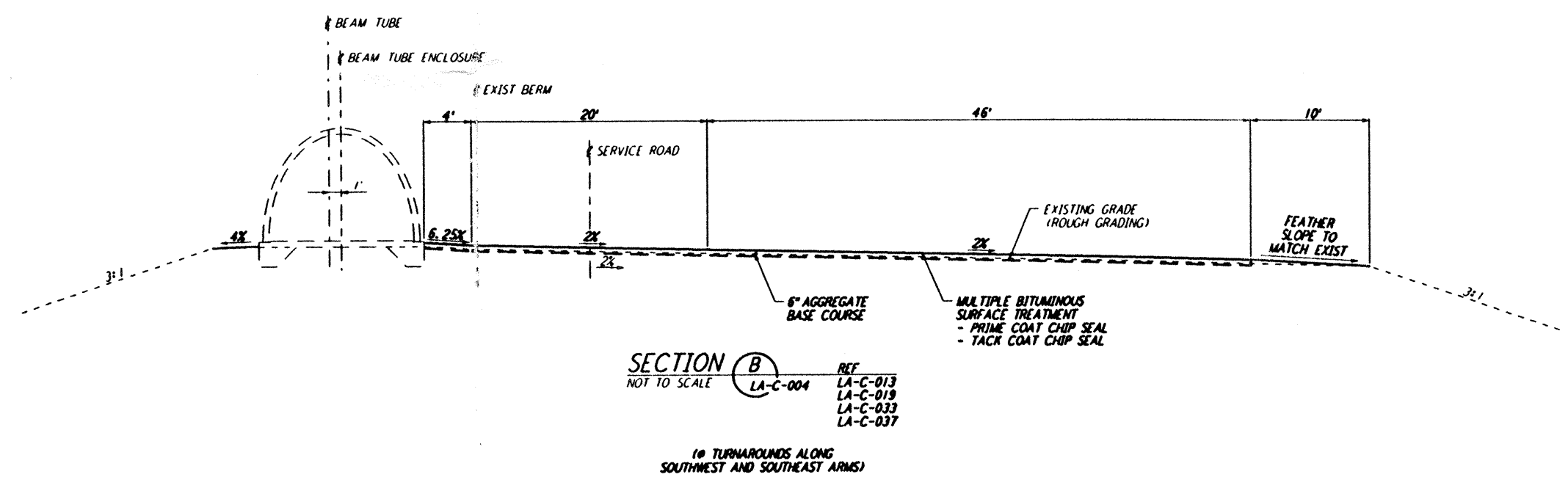
This document and the design it covers are the property of PARSONS. They are loaned only with the borrower's expressed written agreement that they will not be reproduced, copied, loaned, exhibited, or used in any other way, except by written consent from PARSONS to the borrower.



ASPHALT PAVEMENT (1)
 NOT TO SCALE
 REF: LA-C-004, LA-C-005, LA-C-006



NOTES:
 1. SEE SHEET LA-C-002 FOR GENERAL NOTES, LEGEND AND ABBREVIATIONS.



NO.	DATE	BY	CHKD	ENGR	PROJ	DESCRIPTION
B	7/24/96	WRB	ML	UB	TDM	ISSUED FOR BID
A	6/14/96	WRB	ML	UB	TDM	FINAL DESIGN REVIEW

DRAWN	WRB
CHECKED	
ENGINEER	
PROJ	

PARSONS
 100 WEST WALNUT STREET
 PASADENA, CALIFORNIA

LIGO
 CALIFORNIA INSTITUTE OF TECHNOLOGY
 MASSACHUSETTS INSTITUTE OF TECHNOLOGY

LASER INTERFEROMETER
 GRAVITATIONAL-WAVE OBSERVATORY
 SITE NO. 2 - LIVINGSTON, LOUISIANA

TITLE	CIVIL TYPICAL SECTIONS AND DETAILS
DATE	NONE
CONTRACT NUMBER	PP150969
PROJECT NUMBER	8094
SHEET NUMBER	LA-C-004

Mon Jul 22 06:16:58 1996 s3-v18b2 J:\PLOTS\QUEUES\18B2\CE004.PRF