

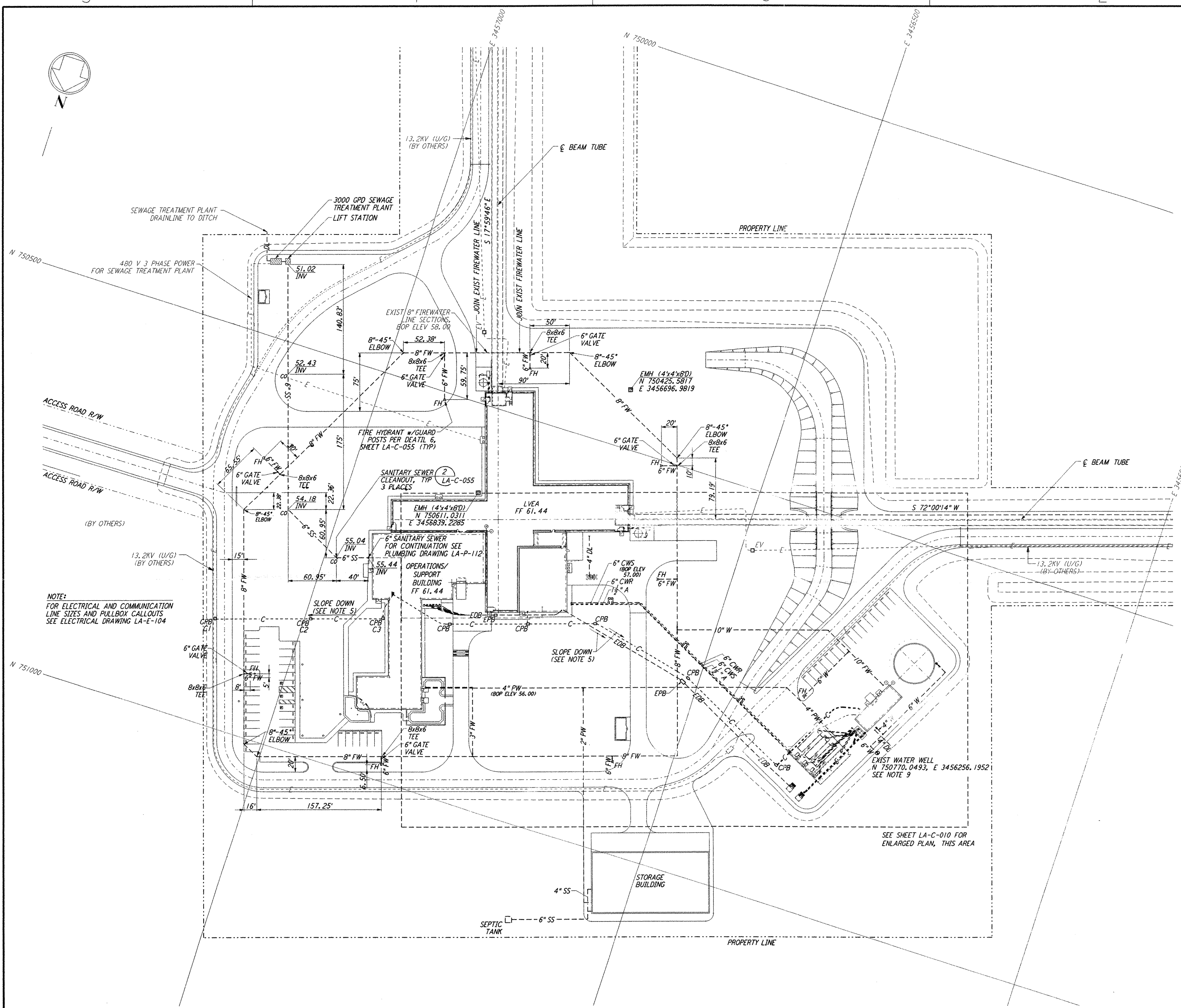
NOTES:

1. SEE SHEET LA-C-002 FOR GENERAL NOTES, LEGEND AND ABBREVIATIONS.
2. FOR PROPERTY CORNER LOCATIONS, SEE SHEET LA-C-001.
3. ALL DIMENSIONS SHOWN FOR COMMUNICATION AND ELECTRICAL PULLBOXES ARE INTERNAL DIMENSIONS, UNLESS NOTED OTHERWISE.
4. COMMUNICATIONS CONDUIT SHALL STUB-UP INSIDE THE ACCESS FLOOR TO AN ELEVATION THAT WILL PREVENT FLOODING OF CAVITY IF OUTDOOR UNDERGROUND CONDUIT RUNS ARE FILLED WITH WATER.
5. DUCT BANK SHALL SLOPE DOWN AWAY FROM BUILDING.
6. POLYETHYLENE PULL ROPES SHALL BE PROVIDED BETWEEN PULLBOXES AND STUB-UPS FOR EACH CONDUIT.
7. THRUST BLOCKS SHALL BE PROVIDED AT ALL BENDS AND TEES, FOR ALL PRESSURE LINES. SEE DETAIL 3, SHEET LA-C-055 FOR SIZES.
8. SEE DETAIL 5, SHEET LA-C-055 FOR TRENCH BEDDING REQUIREMENTS.
9. CONTRACTOR SHALL PROVIDE THE COMPLETE DESIGN, PROVIDE ALL EQUIPMENT AND MATERIALS, AND SHALL DRILL THE WATER WELL TO THE DEPTH NECESSARY TO ACHIEVE POTABLE QUALITY WATER. THE CONTRACTOR SHALL PROVIDE AND INSTALL THE POTABLE WATER PUMP AND NECESSARY ACCESSORIES TO PROVIDE A CONTINUOUS FLOW OF 125 GPM AT A MINIMUM OF 50 PSI AT THE PUMP OUTLET. CONTRACTOR SHALL OBTAIN ALL PERMITS AND INSPECTIONS NECESSARY FOR THE WATER WELL AND PUMP AND BE IN ACCORDANCE WITH THE LOUISIANA STATE DEPARTMENT OF HEALTH REQUIREMENTS.
10. PER LIVINGSTON FIRE CHIEF THE 5 1/4" MAIN VALVE SHOULD BE POSITIONED TOWARDS THE ACCESS ROAD IN ALL CASES.

COMMUNICATION PULL BOX LOCATIONS

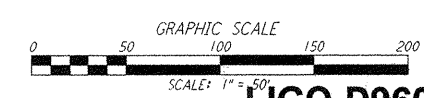
CPB	COORDINATES	
	NORTH	EAST
C1	750865.5178	3457108.5226
C2	750828.5958	3456992.4351
C3	750799.7375	3456906.0257

NOTE: COORDINATES ARE TO THE CENTER OF PULL BOX.



NOTE:
 FOR ELECTRICAL AND COMMUNICATION
 LINE SIZES AND PULLBOX CALLOUTS
 SEE ELECTRICAL DRAWING LA-E-104

"UTILITY AS-BUILTS AND ASSOCIATED CIVIL
 WORKS ARE APPROXIMATE"



LIGO-D960827-02-0

LASER INTERFEROMETER
 GRAVITATIONAL-WAVE OBSERVATORY
 SITE NO. 2 - LIVINGSTON, LOUISIANA

TITLE	SCALE	CONTRACT NUMBER	PROJECT NUMBER
CIVIL CORNER STATION UTILITY PLAN	1" = 50'	PP150969	8094
SHEET NUMBER	LA-C-009		REVISIONS

DRAWING NO.	DESCRIPTION	NO.	DATE	BY	CHKD	ENGR	PROJ	DESCRIPTION
		2	08-07-98	WRB				ISSUED FOR AS-BUILT
		1	2-28-97	WRB	ML	JTB	TDM	ADDED WALK-WALK OPENING, ENLARGED XFMR PAD

ISSUED FOR CONSTRUCTION			
DRAWN	WRB	11-15-96	
CHECKED	ML	11-15-96	
ENGINEER	JTB	11-15-96	
PROJ	TDM	11-15-96	
AS-BUILT DRAWINGS			

PARSONS
 100 WEST WALNUT STREET
 PASADENA, CALIFORNIA

LIGO
 CALIFORNIA INSTITUTE OF TECHNOLOGY
 MASSACHUSETTS INSTITUTE OF TECHNOLOGY