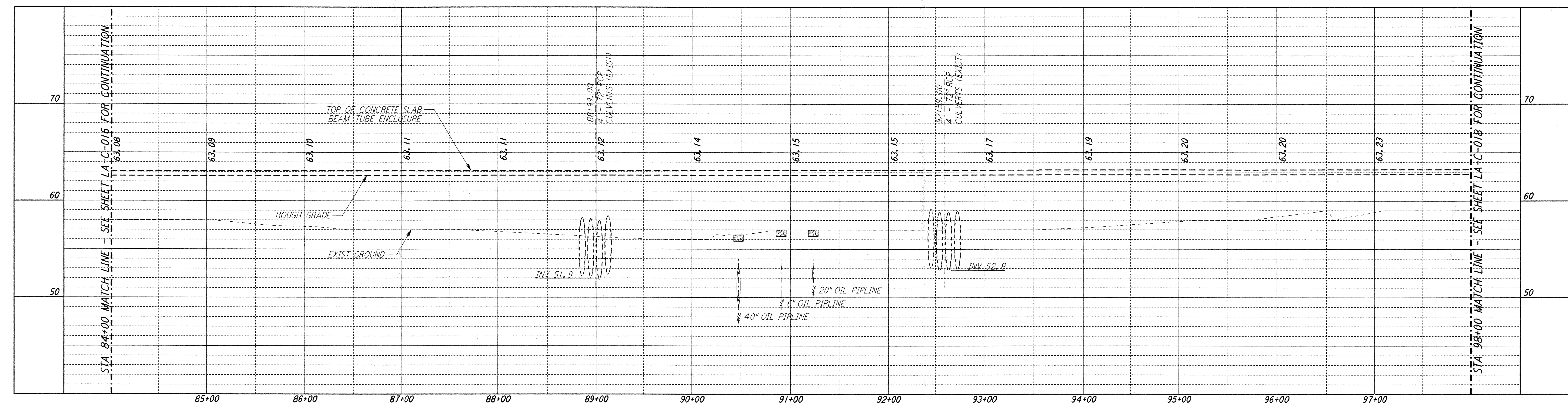
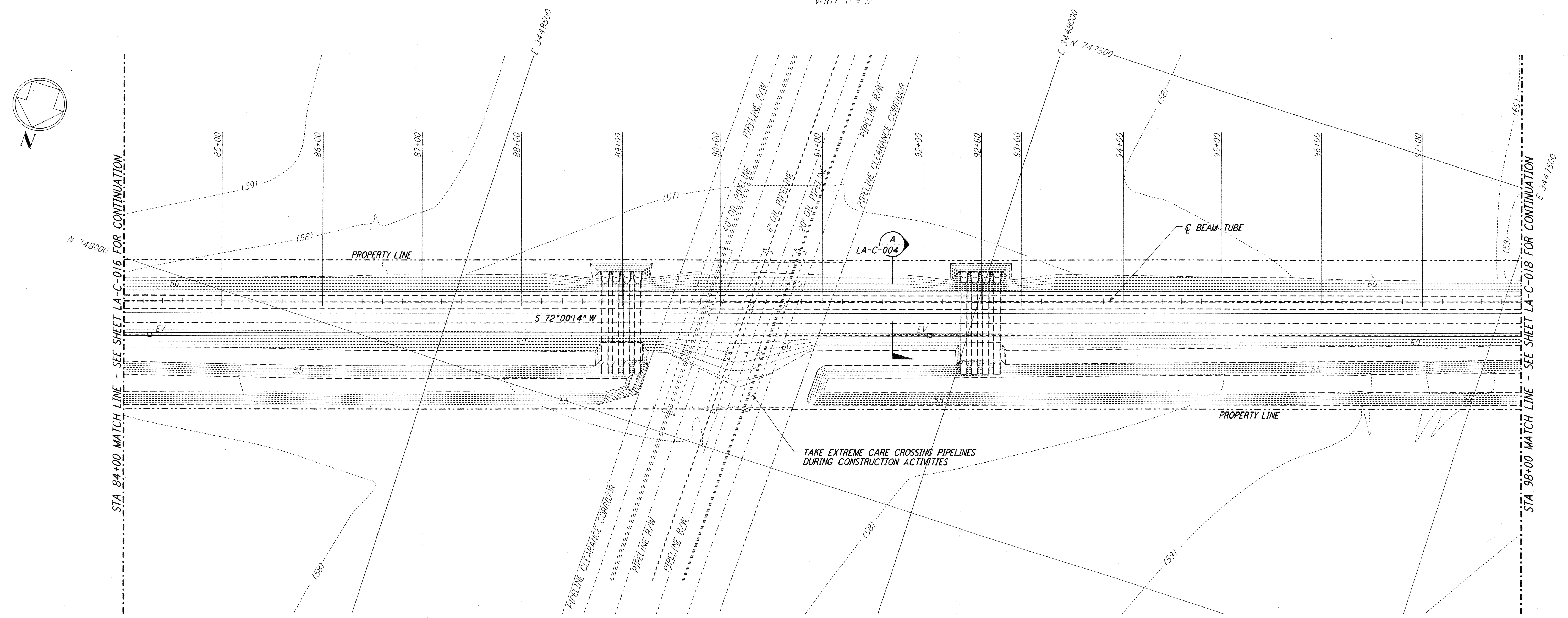


This document and the design it covers are the property of PARSONS. They are loaned only with the borrower's expressed written agreement that they will not be reproduced, copied, loaned, exhibited, or used in any other way, except by written consent from PARSONS to the borrower.



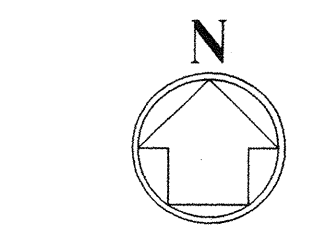
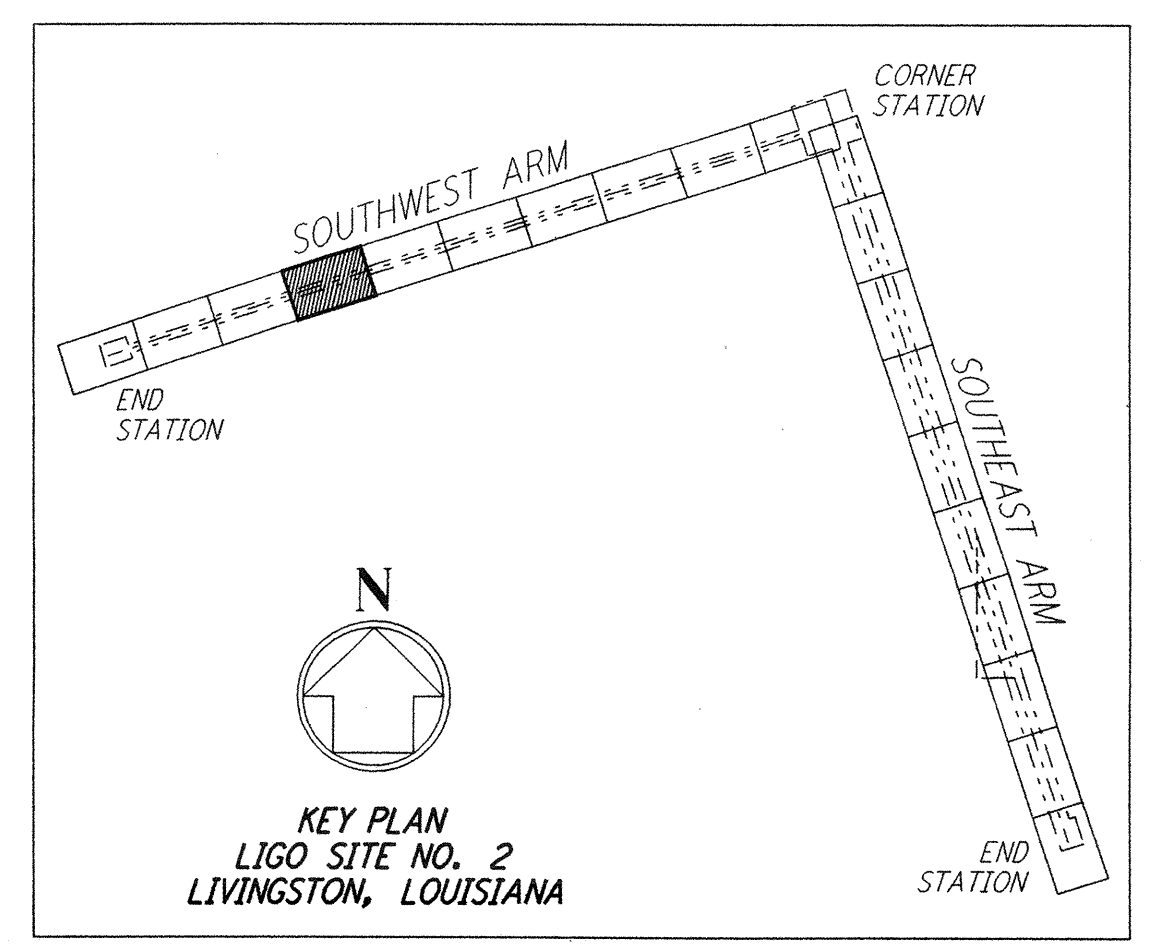
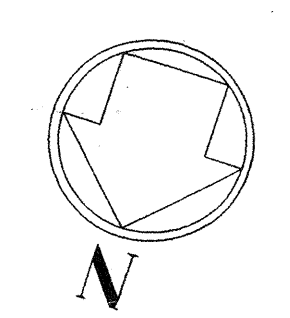
PROFILE
 SCALES: HORIZ: 1" = 50'
 VERT: 1" = 5'



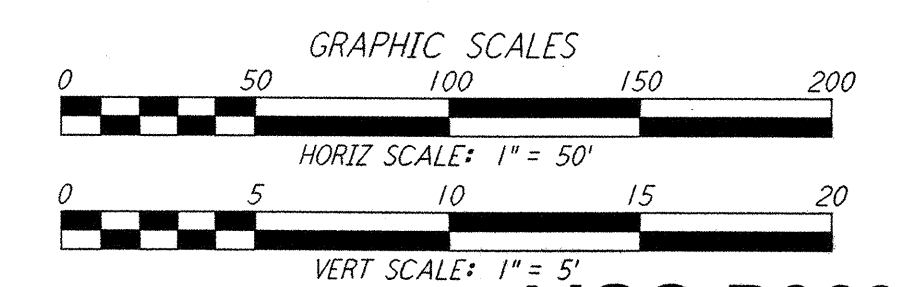
PLAN
 SCALE: 1" = 50'

NOTE:
 LIGO SOUTHWEST ARM CROSSING OF SHELL PIPELINE R/W OCCURS WITHIN LIVINGSTON PARISH, LOUISIANA, TOWNSHIP 6 SOUTH - RANGE 4 EAST, SECTION 3.

- NOTES:**
- SEE SHEET LA-C-002 FOR GENERAL NOTES, LEGEND AND ABBREVIATIONS.
 - SEE SHEET LA-C-004 FOR TYPICAL SECTIONS AND DETAILS.



KEY PLAN
 LIGO SITE NO. 2
 LIVINGSTON, LOUISIANA



LIGO-D960835-02-0

NO.	DATE	BY	CHKD	ENGR	PROJ	DESCRIPTION
2	08-07-98	WRB	ML	JB	TDM	ISSUED FOR AS-BUILT
1	2-3-97	WRB	ML	JB	TDM	REVISED PROFILE ELEVATIONS

ISSUED FOR CONSTRUCTION	DRAWN	WRB	11-15-96
CHECKED	ML	11-15-96	
ENGINEER	JB	11-15-96	
PROJ	TDM	11-15-96	

AS-BUILT DRAWINGS

PARSONS
 100 WEST WALNUT STREET
 PASADENA, CALIFORNIA

LIGO
 CALIFORNIA INSTITUTE OF TECHNOLOGY
 MASSACHUSETTS INSTITUTE OF TECHNOLOGY

LASER INTERFEROMETER GRAVITATIONAL-WAVE OBSERVATORY SITE NO. 2 - LIVINGSTON, LOUISIANA		
TITLE	SCALE	CONTRACT NUMBER
CIVIL SOUTHWEST ARM PLAN AND PROFILE STA 84+00 TO STA 98+00	AS NOTED	PPI 50969
SHEET NUMBER	PROJECT NUMBER	8094
LA-C-017	REVISIONS	