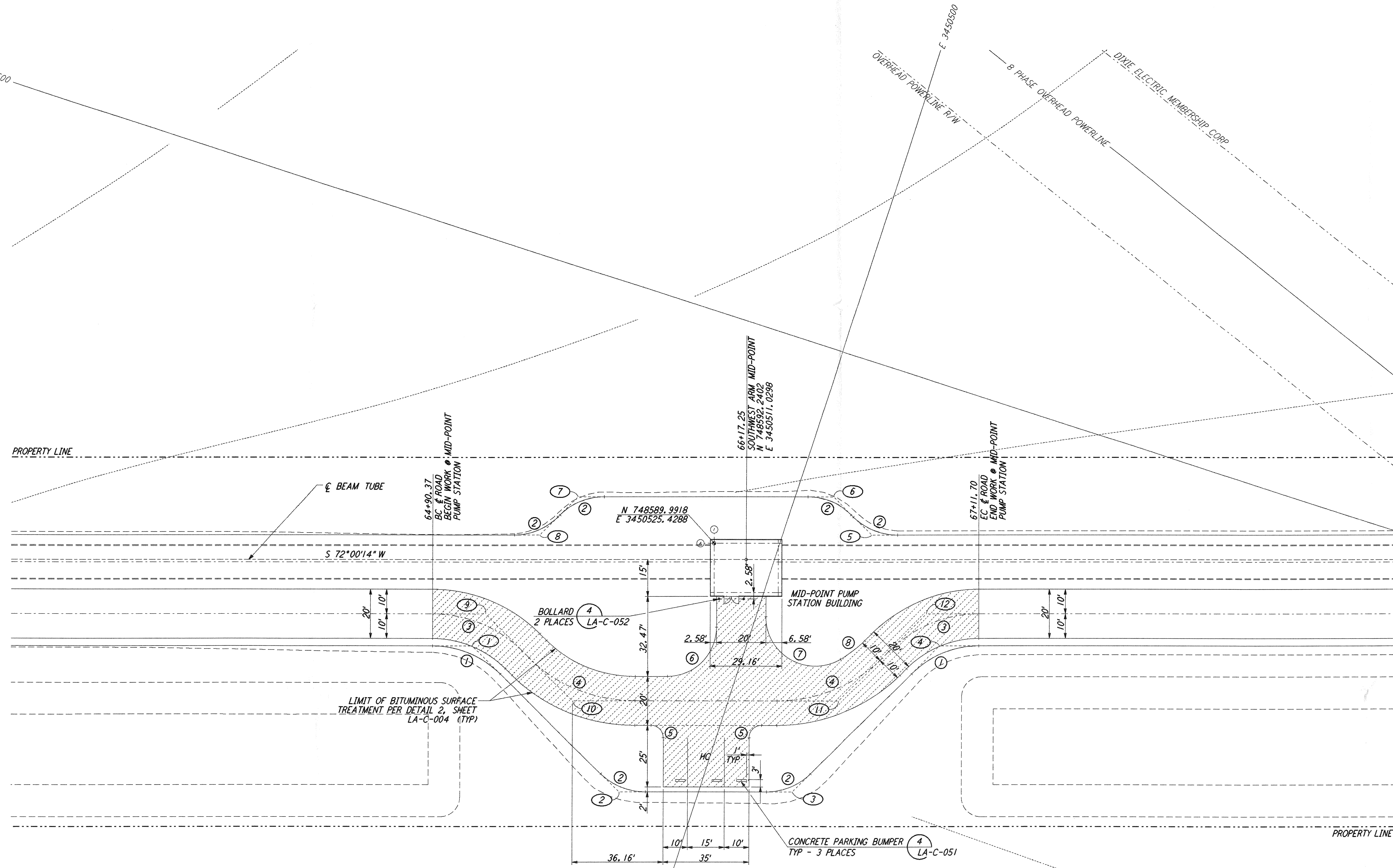
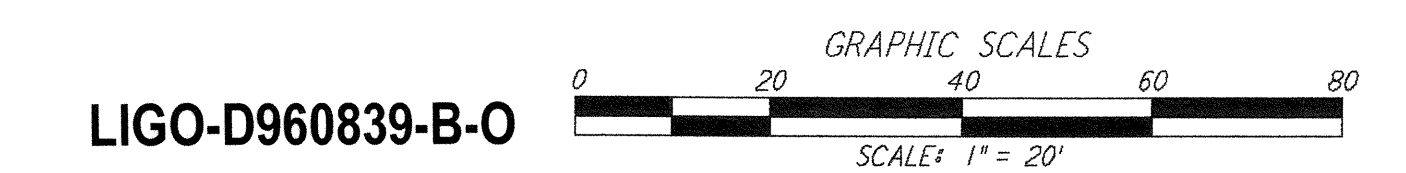
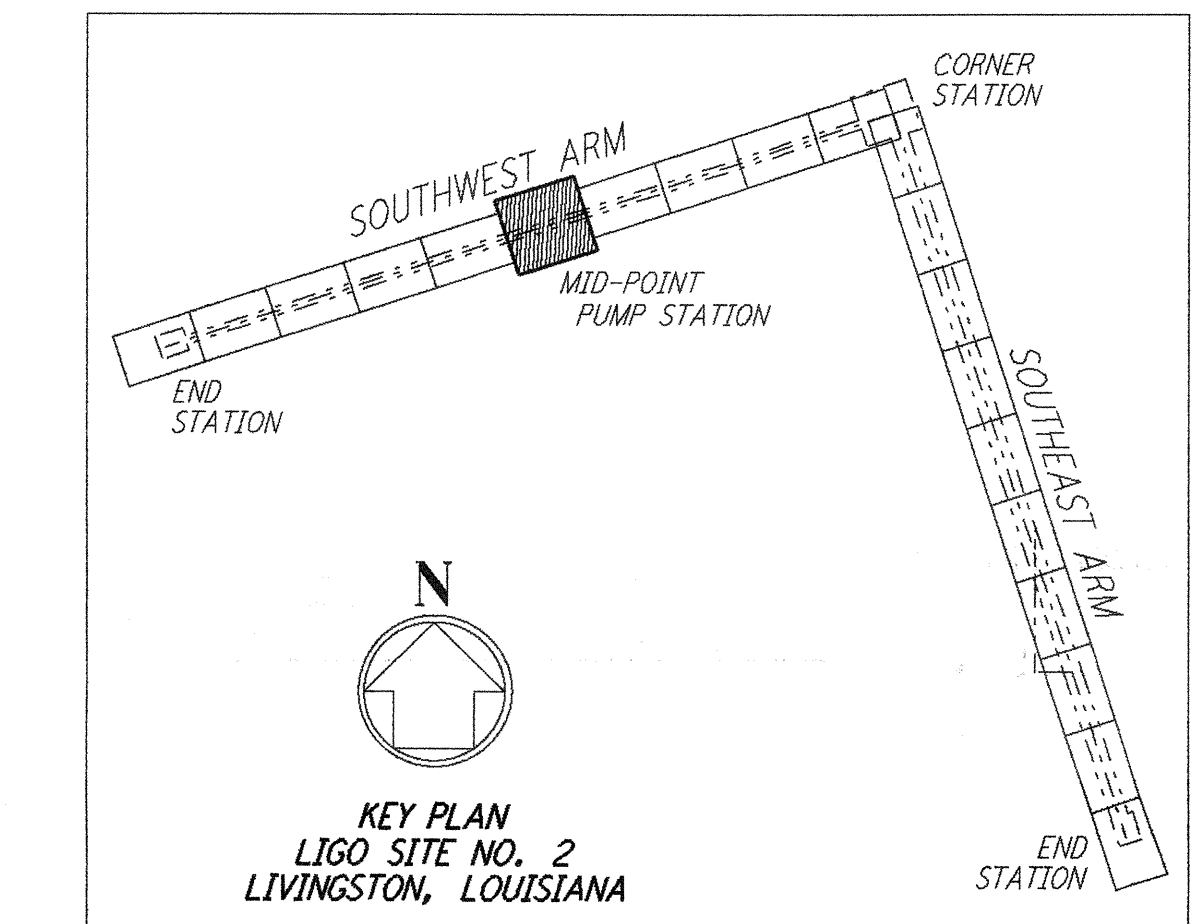


**NOTES:**  
 1. SEE SHEET LA-C-002 FOR GENERAL NOTES, LEGEND AND ABBREVIATIONS.



CURVE DATA					
Δ	RADIUS	LENGTH	TANGENT	REMARK	
1 45°00'00"	39'	30.63'	16.16'	EDGE OF PAD (EXIST)	
2 45°00'00"	25'	19.63'	10.36'	EDGE OF PAD (EXIST)	
3 45°00'00"	52'	40.84'	21.54'	EDGE OF PAD (EXIST)	
4 45°00'00"	60'	47.12'	24.85'	EDGE OF PAD (EXIST)	
5 90°00'00"	5'	7.85'	5.00'	EDGE OF PAD (EXIST)	
6 90°00'00"	20'	31.42'	20.00'	EDGE OF PAD (EXIST)	
7 120°53'25"	20'	42.20'	35.27'	EDGE OF PAD (EXIST)	
8 14°06'35"	50'	12.31'	6.19'	EDGE OF PAD (EXIST)	

COORDINATES			REMARK
Δ	NORTH	EAST	
1	748659.7365	3450605.5239	PI EDGE OF PAD (EXIST)
2	748697.9299	3450530.5654	PI EDGE OF PAD (EXIST)
3	748676.2822	3450463.9403	PI EDGE OF PAD (EXIST)
4	748601.3395	3450425.7549	PI EDGE OF PAD (EXIST)
5	748567.0308	3450465.7924	PI EDGE OF PAD (EXIST)
6	748557.0626	3450485.3564	PI EDGE OF PAD (EXIST)
7	748588.8911	3450583.3149	PI EDGE OF PAD (EXIST)
8	748608.4436	3450593.2774	PI EDGE OF PAD (EXIST)
9	748645.7089	3450604.4199	PI EDGE OF PAD (EXIST)
10	748668.4802	3450559.7285	PI EDGE OF PAD (EXIST)
11	748635.3154	3450457.6570	PI EDGE OF PAD (EXIST)
12	748590.6389	3450434.8926	PI EDGE OF PAD (EXIST)



This document and the design it covers are the property of PARSONS. They are loaned only with the borrower's expressed written agreement that they will not be reproduced, copied, loaned, exhibited, or used in any other way, except by written consent from PARSONS to the borrower.

NO.	DATE	BY	CHKD	ENGR	PROJ	DESCRIPTION
B	7/24/96	WRB	ML	JB	TDM	ISSUED FOR BID
A	6/14/96	WRB	ML	JB	TDM	FINAL DESIGN REVIEW

DRAWN	WRB
CHECKED	
ENGINEER	
PROJ	

**PARSONS**  
 100 WEST WALNUT STREET  
 PASADENA, CALIFORNIA

**LIGO**  
 CALIFORNIA INSTITUTE OF TECHNOLOGY  
 MASSACHUSETTS INSTITUTE OF TECHNOLOGY

LASER INTERFEROMETER  
 GRAVITATIONAL-WAVE OBSERVATORY  
 SITE NO. 2 - LIVINGSTON, LOUISIANA

CIVIL  
 SOUTHWEST ARM  
 PUMP STATION  
 PLOT PLAN

SCALE: 1" = 20'  
 CONTRACT NUMBER: PPI150969  
 PROJECT NUMBER: 8094  
**LA-C-021**

MON JUL 22 10:54:22 1996 5313.DWG JAYLOUIS\SUBDESIGN\BDC\LA-C-021\B1.PLT

H:\BDC\LA-C-021\B1.PLT