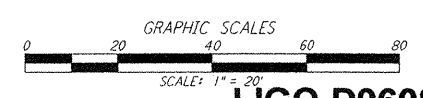
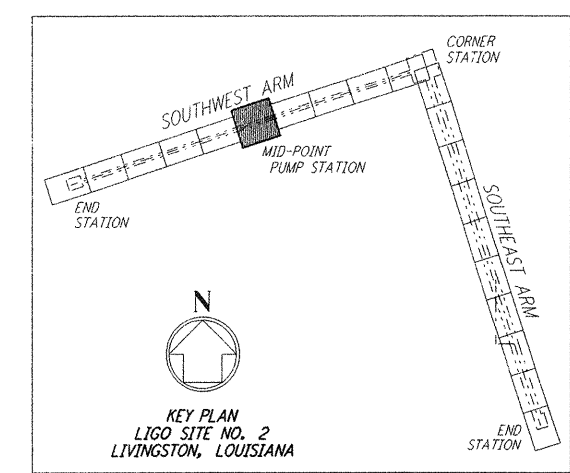
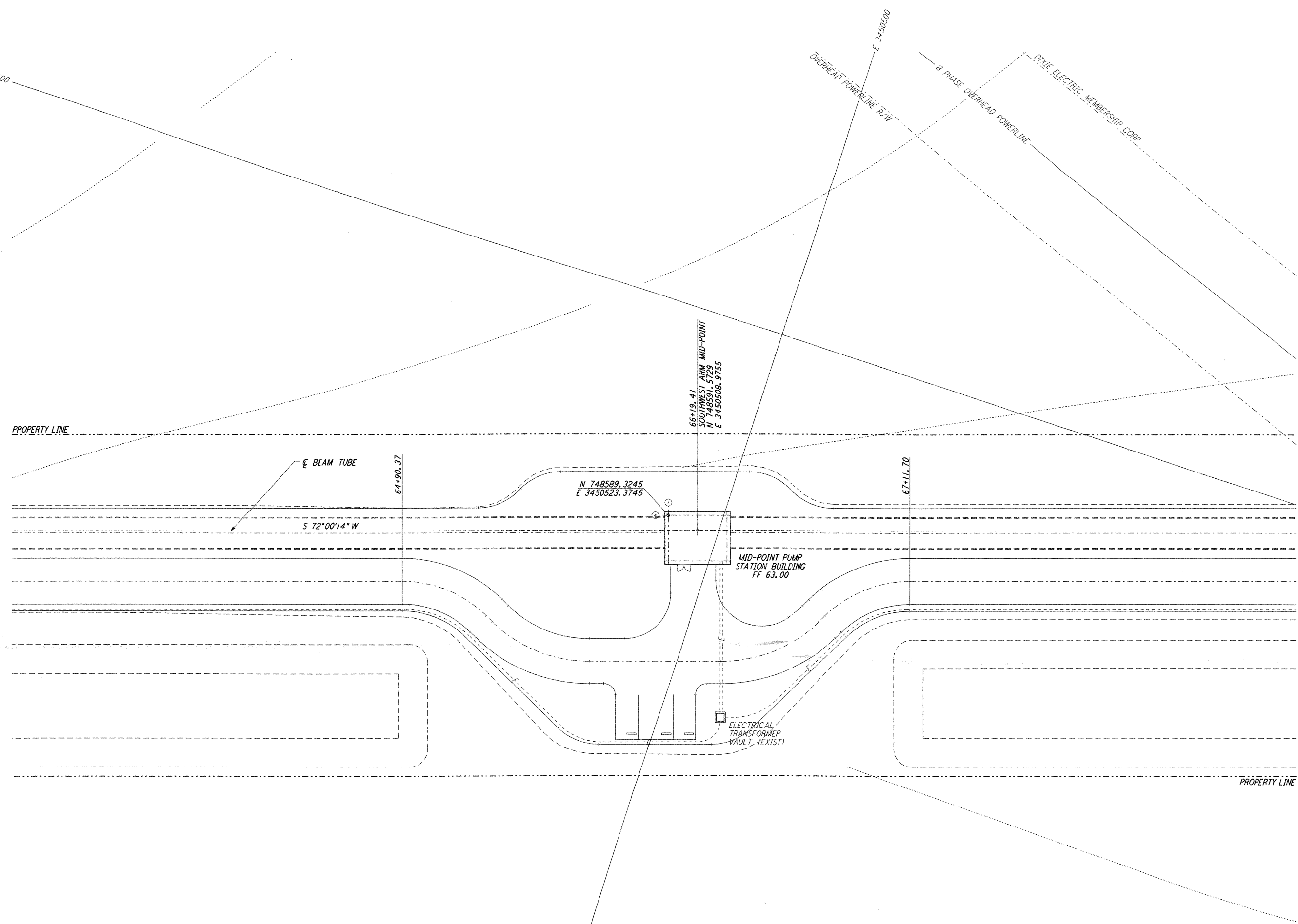


NOTES:
1. SEE SHEET LA-C-002 FOR GENERAL NOTES, LEGEND AND ABBREVIATIONS.



NO.	DATE	BY	CHKD	ENGR	PROJ	DESCRIPTION
2	08-07-98	WRB	(S)	SP	MM	ISSUED FOR AS-BUILT
1	2-3-97	WRB	ML	JB	TDM	REVISED MID STATION

ISSUED FOR CONSTRUCTION	
DRAWN	WRB 11-15-96
CHECKED	ML 11-15-96
ENGINEER	JB 11-15-96
PROJ	TDM 11-15-96

AS-BUILT DRAWINGS

PARSONS
100 WEST WALNUT STREET
PASADENA, CALIFORNIA

LIGO
CALIFORNIA INSTITUTE OF TECHNOLOGY
MASSACHUSETTS INSTITUTE OF TECHNOLOGY

LIGO-D960841-02-0

LASER INTERFEROMETER
GRAVITATIONAL-WAVE OBSERVATORY
SITE NO. 2 - LIVINGSTON, LOUISIANA

TITLE: CIVIL
SOUTHWEST ARM
PUMP STATION
UTILITY PLAN

SCALE: 1" = 20'

SHEET NUMBER: PP150969
PROJECT NUMBER: 8094

REVISIONS: **LA-C-023**

This document and the design it covers are the property of PARSONS. They are loaned only with the borrower's expressed written agreement that they will not be reproduced, copied, loaned, exhibited, or used in any other way, except by written consent from PARSONS to the borrower.

Sun Aug 23 22:06:39 1998 G:\PLOT\JOB\5373862.qef 52085 K:\T3862\ce\023.dwg