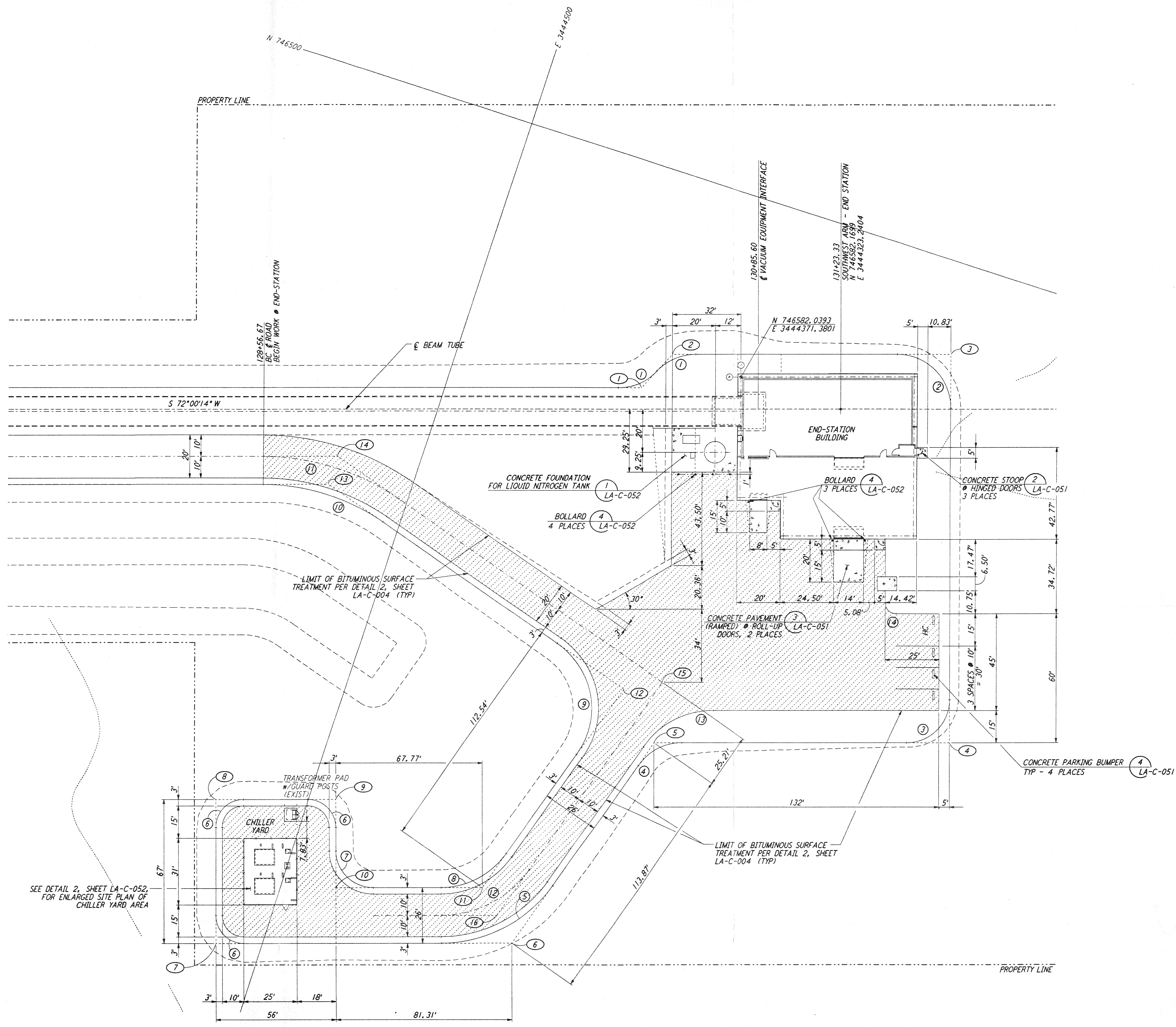


not be reproduced, copied, loaned, exhibited, or used in any other way, except by written consent from PARSONS to the borrower.

This document and the design it covers are the property of PARSONS. They are loaned only with the borrower's expressed written agreement that they will

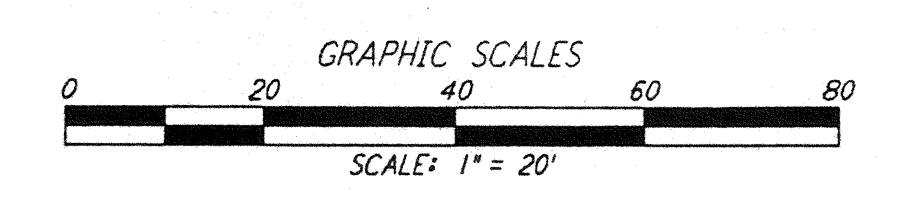
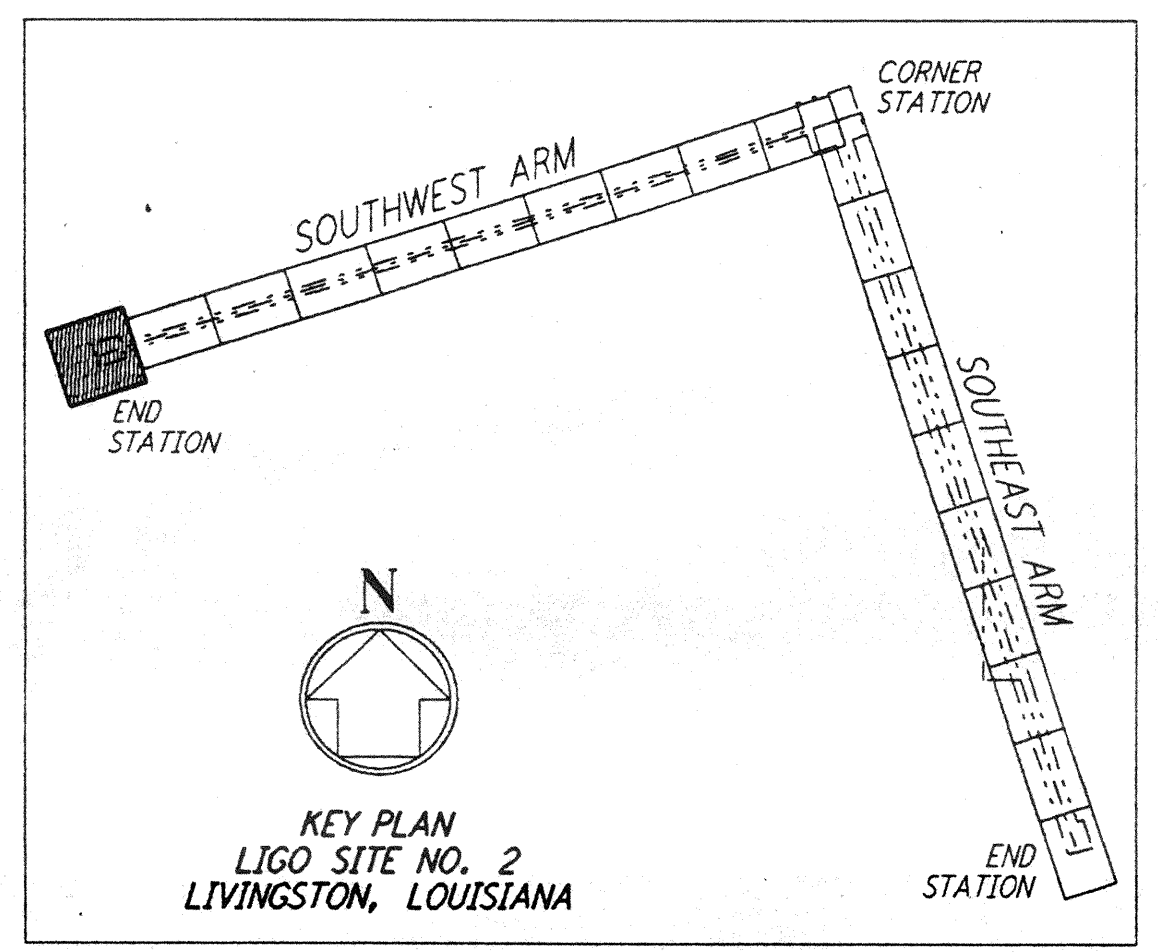


NOTES:
 1. SEE SHEET LA-C-002 FOR GENERAL NOTES, LEGEND AND ABBREVIATIONS.

CURVE DATA					
Δ	RADIUS	LENGTH	TANGENT	REMARK	
1	46°23'52"	25'	20.24'	10.71'	EDGE OF PAD (EXIST)
2	90°00'00"	25'	39.27'	25.00'	EDGE OF PAD (EXIST)
3	90°00'00"	20'	31.42'	20.00'	EDGE OF PAD (EXIST)
4	55°00'00"	25'	24.00'	13.01'	EDGE OF PAD (EXIST)
5	55°00'00"	63'	60.48'	32.80'	EDGE OF PAD (EXIST)
6	90°00'00"	13'	20.42'	13.00'	EDGE OF PAD (EXIST)
7	90°00'00"	17'	26.70'	17.00'	EDGE OF PAD (EXIST)
8	55°00'00"	37'	35.52'	19.26'	EDGE OF PAD (EXIST)
9	90°00'00"	37'	58.12'	37.00'	EDGE OF PAD (EXIST)
10	35°00'00"	97'	59.25'	30.58'	EDGE OF PAD (EXIST)
11	35°00'00"	110'	67.19'	34.68'	EDGE OF PAD (EXIST)
12	55°00'00"	50'	48.00'	26.03'	EDGE OF PAD (EXIST)
13	55°00'00"	40'	38.40'	20.82'	EDGE OF PAD (EXIST)
14	90°00'00"	5'	7.85'	5.00'	EDGE OF PAD (EXIST)

COORDINATES			REMARK
Δ	NORTH	EAST	
1	746601.2094	3444414.2190	PI EDGE OF PAD (EXIST)
2	746591.8859	3444404.9583	PI EDGE OF PAD (EXIST)
3	746542.0340	3444282.2991	PI EDGE OF PAD (EXIST)
4	746713.9414	3444226.4561	PI EDGE OF PAD (EXIST)
5	746756.2721	3444356.7673	PI EDGE OF PAD (EXIST)
6	746865.1631	3444390.0666	PI EDGE OF PAD (EXIST)
7	746907.5859	3444520.6572	PI EDGE OF PAD (EXIST)
8	746843.8638	3444541.3572	PI EDGE OF PAD (EXIST)
9	746826.5621	3444488.0967	PI EDGE OF PAD (EXIST)
10	746865.5560	3444475.4302	PI EDGE OF PAD (EXIST)
11	746844.6170	3444410.9719	PI EDGE OF PAD (EXIST)
12	746736.9948	3444378.0607	PI EDGE OF PAD (EXIST)
13	746688.3994	3444536.9707	PI EDGE OF PAD (EXIST)
14	746674.7690	3444537.0886	PI EDGE OF PAD (EXIST)
15	746728.3647	3444361.8273	EDGE OF ROAD INTERSECTION
16	746854.8902	3444400.5194	PI EDGE OF ROAD

SEE DETAIL 2, SHEET LA-C-052, FOR ENLARGED SITE PLAN OF CHILLER YARD AREA



DRAWING NO.	DESCRIPTION	NO.	DATE	BY	CHKD	ENGR	PROJ	DESCRIPTION

ISSUED FOR CONSTRUCTION		
DRAWN	WRB	11-15-96
CHECKED	WUL	11-15-96
ENGINEER	JB	11/15/96
PROJ		11/15/96

Jeffrey Bennett
 01/12/98

PARSONS
 100 WEST WALNUT STREET
 PASADENA, CALIFORNIA

LIGO
 CALIFORNIA INSTITUTE OF TECHNOLOGY
 MASSACHUSETTS INSTITUTE OF TECHNOLOGY

LASER INTERFEROMETER
 GRAVITATIONAL-WAVE OBSERVATORY
 SITE NO. 2 - LIVINGSTON, LOUISIANA

TITLE: CIVIL SOUTHWEST ARM END-STATION PLOT PLAN

SCALE: 1" = 20'

CONTRACT NUMBER: PPI50969
 PROJECT NUMBER: 8094

SHEET NUMBER: **LA-C-025**

160-D960342-00-0