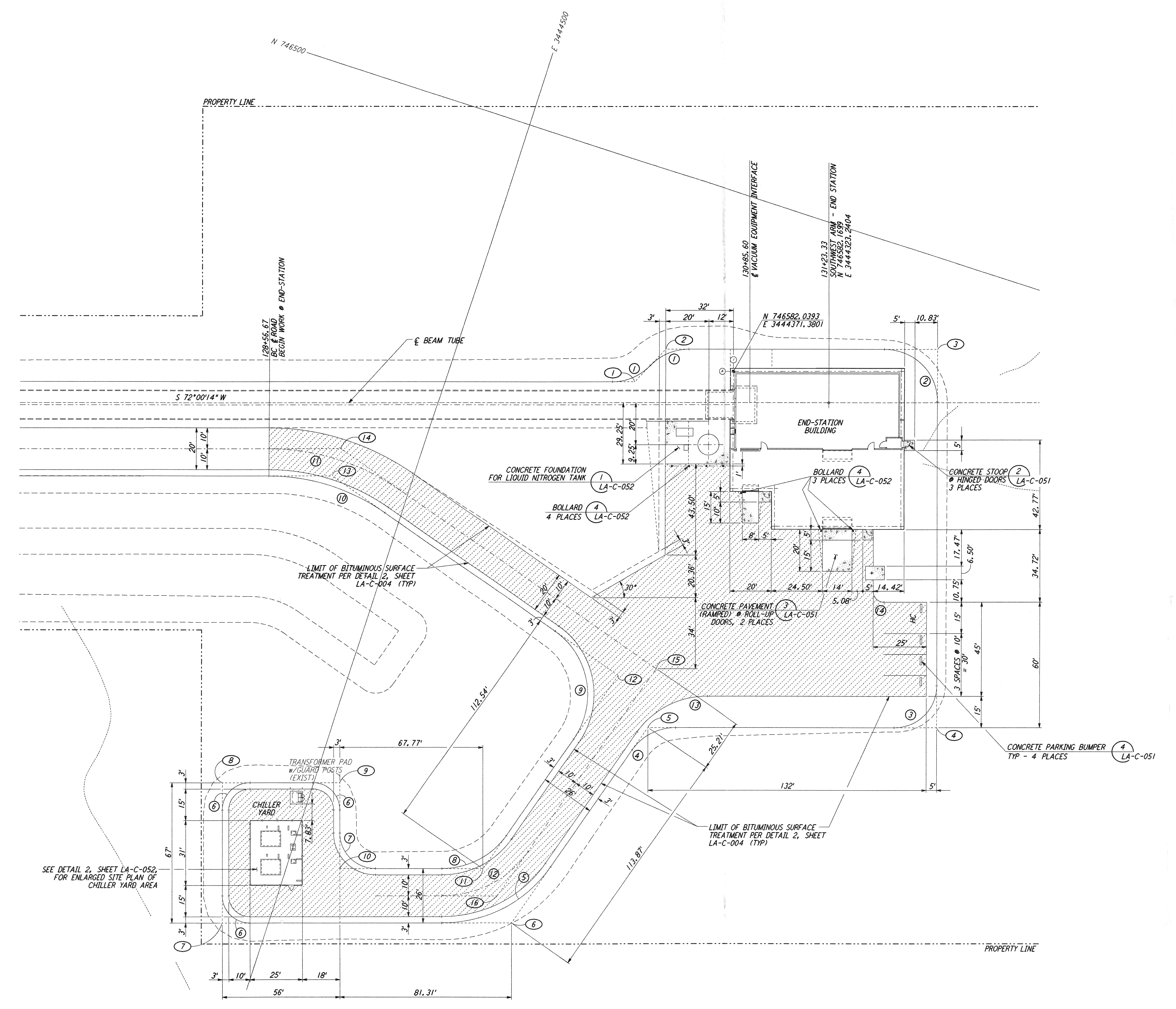
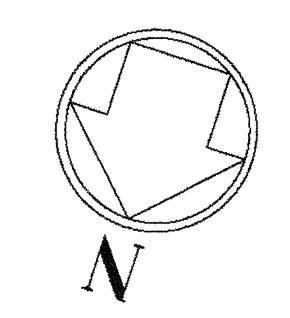


NOTES:
 1. SEE SHEET LA-C-002 FOR GENERAL NOTES, LEGEND AND ABBREVIATIONS.

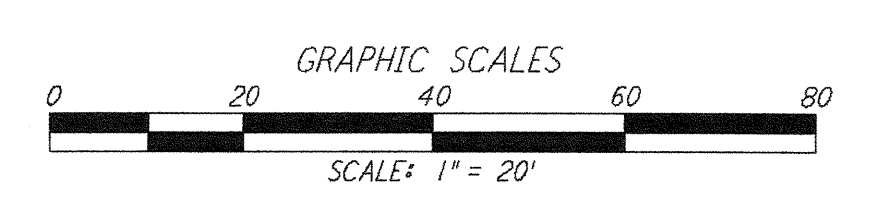
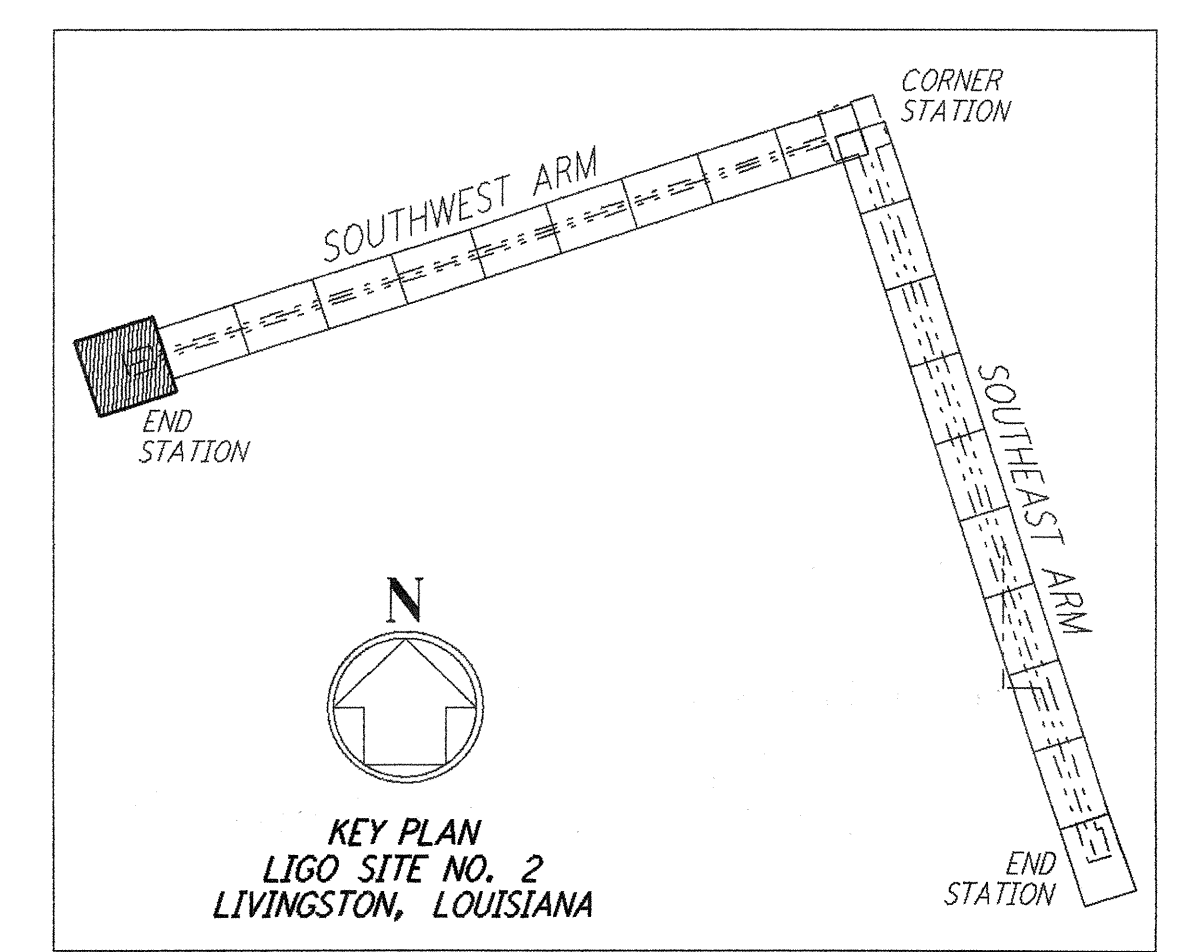
This document and the design it covers are the property of PARSONS. They are loaned only with the borrower's expressed written agreement that they will not be reproduced, copied, loaned, exhibited, or used in any other way, except by written consent from PARSONS to the borrower.



CURVE DATA				
Δ	RADIUS	LENGTH	TANGENT	REMARK
1	46°23'52"	25'	20.24'	EDGE OF PAD (EXIST)
2	90°00'00"	25'	39.27'	EDGE OF PAD (EXIST)
3	90°00'00"	20'	31.42'	EDGE OF PAD (EXIST)
4	55°00'00"	25'	24.00'	EDGE OF PAD (EXIST)
5	55°00'00"	63'	60.48'	EDGE OF PAD (EXIST)
6	90°00'00"	13'	20.42'	EDGE OF PAD (EXIST)
7	90°00'00"	17'	26.70'	EDGE OF PAD (EXIST)
8	55°00'00"	37'	35.52'	EDGE OF PAD (EXIST)
9	90°00'00"	37'	58.12'	EDGE OF PAD (EXIST)
10	35°00'00"	97'	59.25'	EDGE OF PAD (EXIST)
11	35°00'00"	110'	67.19'	EDGE OF PAD (EXIST)
12	55°00'00"	50'	48.00'	EDGE OF PAD (EXIST)
13	55°00'00"	40'	38.40'	EDGE OF PAD (EXIST)
14	90°00'00"	5'	7.85'	EDGE OF PAD (EXIST)

COORDINATES			
Δ	NORTH	EAST	REMARK
1	746601.2094	3444414.2190	PI EDGE OF PAD (EXIST)
2	746581.8859	3444404.9583	PI EDGE OF PAD (EXIST)
3	746542.0340	3444282.2991	PI EDGE OF PAD (EXIST)
4	746713.9414	3444226.4561	PI EDGE OF PAD (EXIST)
5	746756.2721	3444356.7673	PI EDGE OF PAD (EXIST)
6	746865.1631	3444390.0666	PI EDGE OF PAD (EXIST)
7	746907.5859	3444520.6572	PI EDGE OF PAD (EXIST)
8	746843.8638	3444541.3572	PI EDGE OF PAD (EXIST)
9	746826.5621	3444488.0967	PI EDGE OF PAD (EXIST)
10	746865.5560	3444475.4302	PI EDGE OF PAD (EXIST)
11	746844.6170	3444410.9719	PI EDGE OF PAD (EXIST)
12	746736.9948	3444378.0607	PI EDGE OF PAD (EXIST)
13	746688.3994	3444536.9707	PI EDGE OF PAD (EXIST)
14	746674.7690	3444537.0886	PI @ ROAD
15	746728.3647	3444361.8273	@ ROAD INTERSECTION
16	746854.8902	3444400.5194	PI @ ROAD

SEE DETAIL 2, SHEET LA-C-052, FOR ENLARGED SITE PLAN OF CHILLER YARD AREA



LIGO-D960842-B-0

NO.	DATE	BY	CHKD	ENGR	PROJ	DESCRIPTION
B	7/24/96	WRB	ML	JP	ISSUED FOR BID	
A	6/14/96	WRB	ML	TDM	FINAL DESIGN REVIEW	

DRAWN	WRB
CHECKED	
ENGINEER	
PROJ	

PARSONS
 100 WEST WALNUT STREET
 PASADENA, CALIFORNIA

LIGO
 CALIFORNIA INSTITUTE OF TECHNOLOGY
 MASSACHUSETTS INSTITUTE OF TECHNOLOGY

LASER INTERFEROMETER
 GRAVITATIONAL-WAVE OBSERVATORY
 SITE NO. 2 - LIVINGSTON, LOUISIANA

CIVIL
 SOUTHWEST ARM
 END-STATION
 PLOT PLAN

SCALE: 1" = 20'
 CONTRACT NUMBER: PPI50969
 PROJECT NUMBER: 8094
 SHEET NUMBER: **LA-C-025**