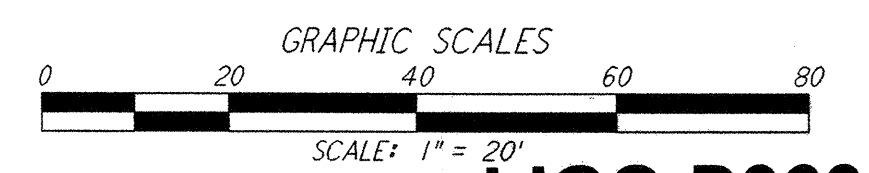
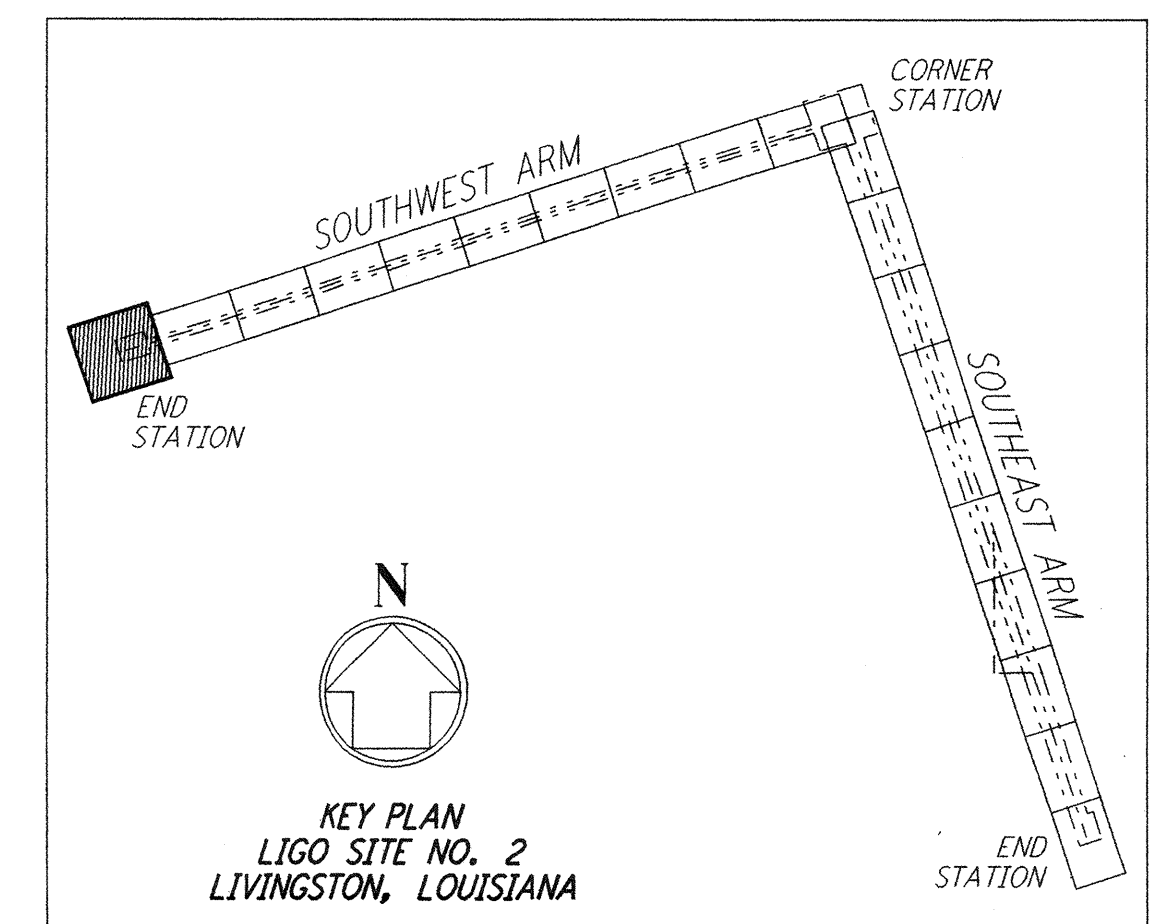
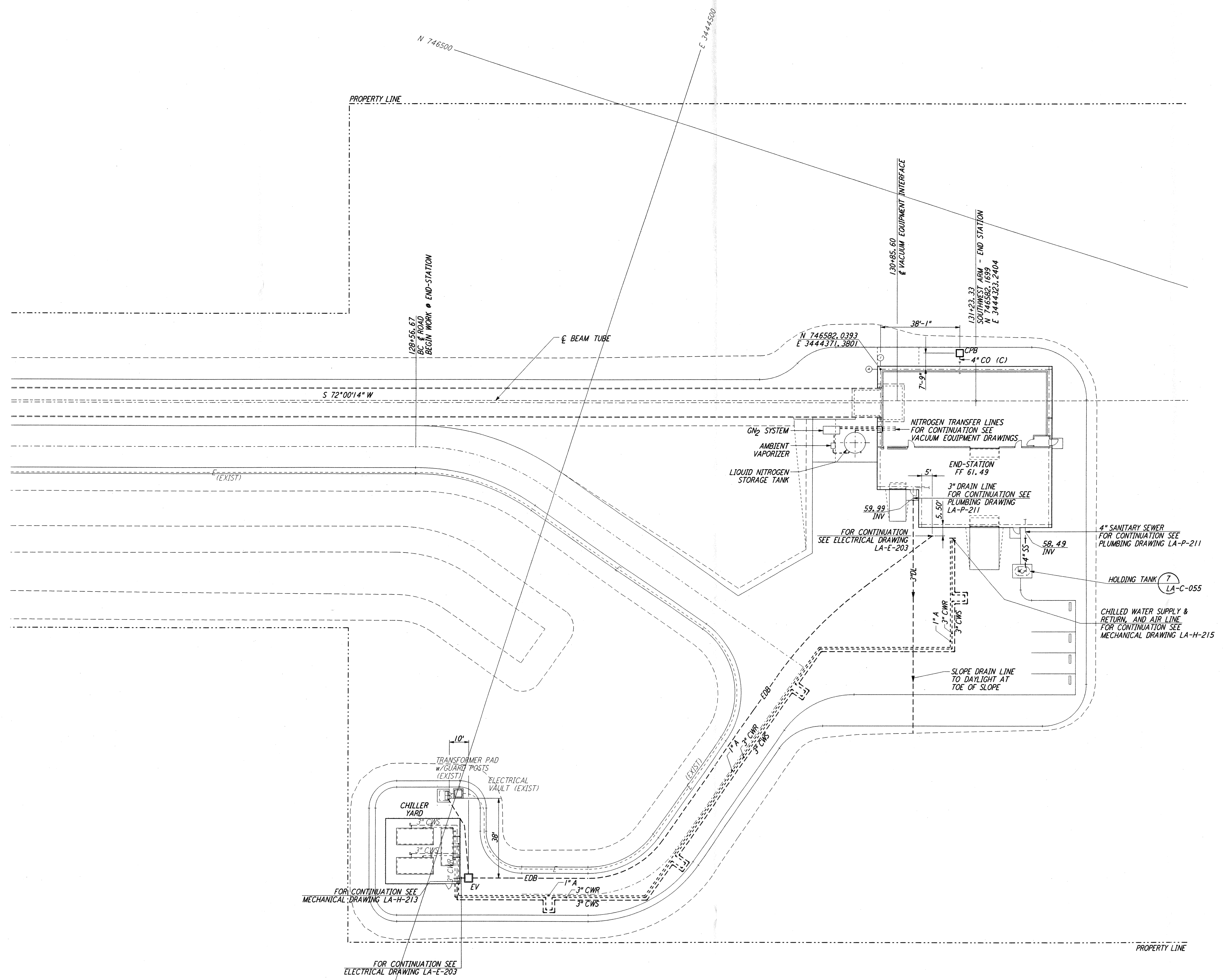
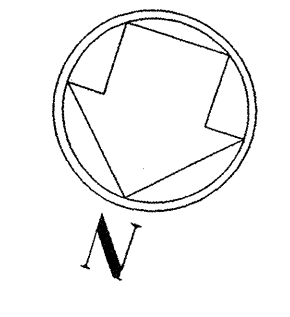


**NOTES:**  
 1. SEE SHEET LA-C-002 FOR GENERAL NOTES, LEGEND AND ABBREVIATIONS.



This document and the design it covers are the property of PARSONS. They are loaned only with the borrower's expressed written agreement that they will not be reproduced, copied, loaned, exhibited, or used in any other way, except by written consent from PARSONS to the borrower.

NO.	DATE	BY	CHKD	ENGR	PROJ	DESCRIPTION
1	08-07-98	WRB	ML	TDM		ISSUED FOR AS-BUILT

ISSUED FOR CONSTRUCTION  
 DRAWN WRB 11-15-96  
 CHECKED ML 11-15-96  
 ENGINEER JB 11-15-96  
 PROJ TDM 11-15-96

**AS-BUILT DRAWINGS**

**PARSONS**  
 100 WEST WALNUT STREET  
 PASADENA, CALIFORNIA

**LIGO**  
 CALIFORNIA INSTITUTE OF TECHNOLOGY  
 MASSACHUSETTS INSTITUTE OF TECHNOLOGY

**LIGO-D960844-01-0**

LASER INTERFEROMETER  
 GRAVITATIONAL-WAVE OBSERVATORY  
 SITE NO. 2 - LIVINGSTON, LOUISIANA

TITLE	SCALE	CONTRACT NUMBER	PROJECT NUMBER
CIVIL SOUTHWEST ARM END-STATION UTILITY PLAN	1" = 20'	PP150969	8094
SHEET NUMBER	REVISIONS		
<b>LA-C-027</b>			