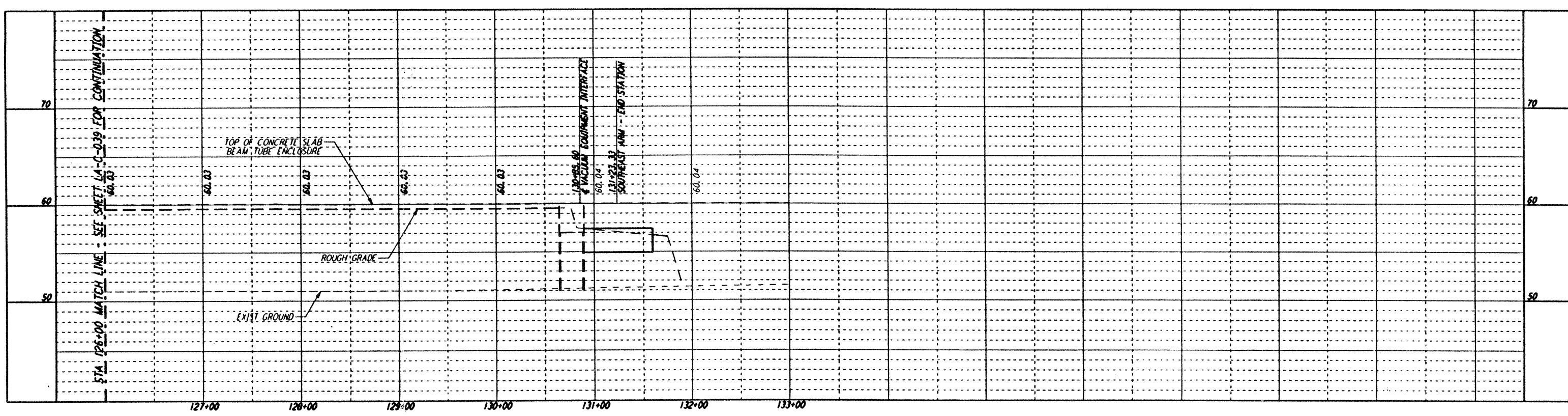
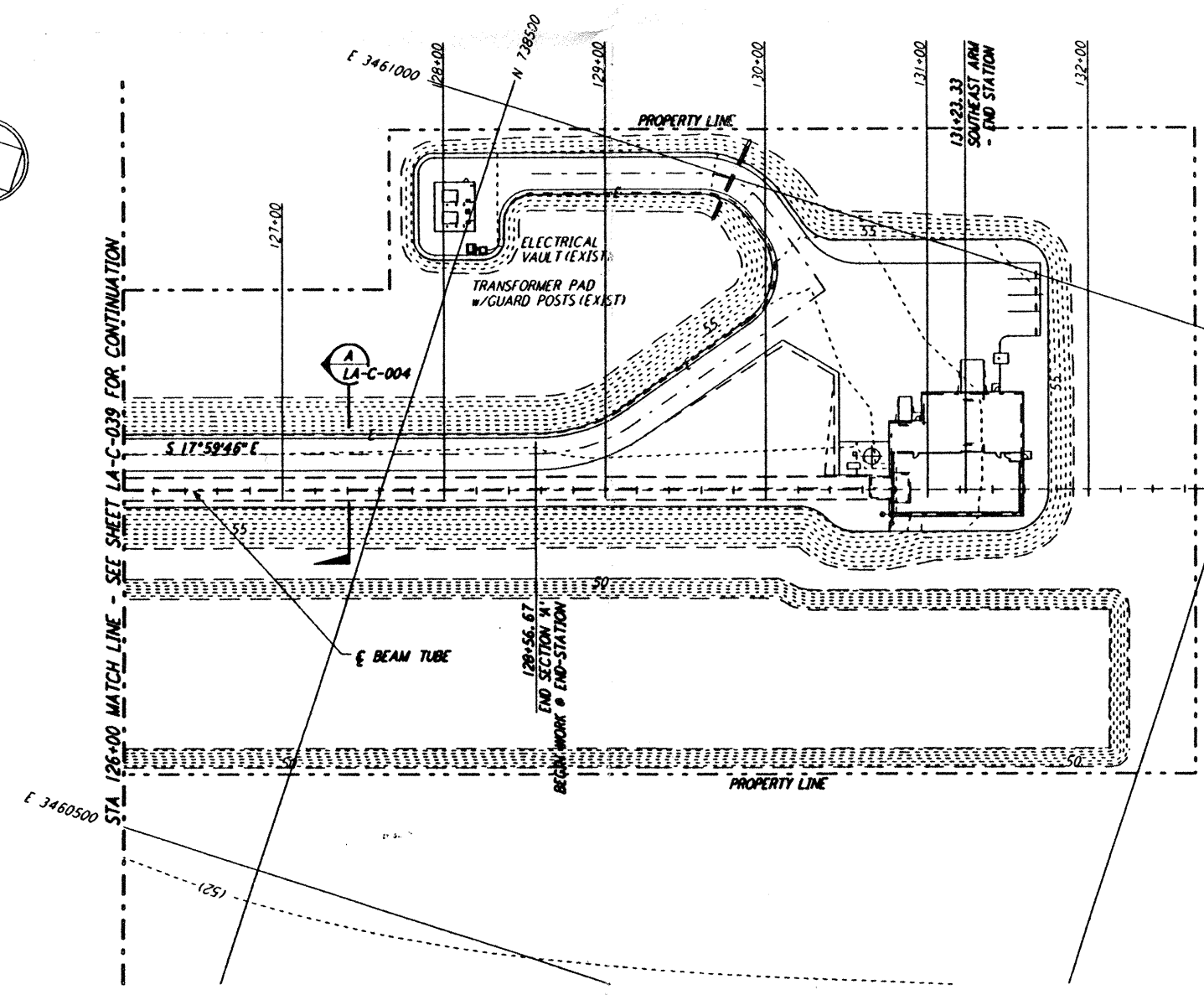


**NOTES:**  
 1. SEE SHEET LA-C-002 FOR GENERAL NOTES, LEGEND AND ABBREVIATIONS.  
 2. SEE SHEET LA-C-004 FOR TYPICAL SECTIONS AND DETAILS.

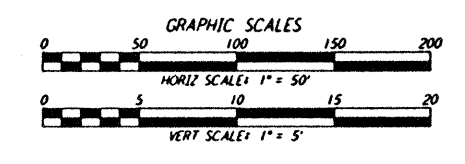
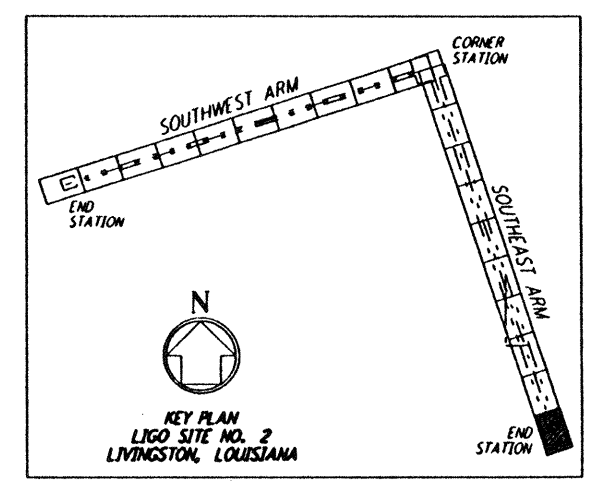


**PROFILE**  
 SCALES: HORIZ: 1" = 50'  
 VERT: 1" = 5'



**PLAN**  
 SCALE: 1" = 50'

**NOTE:**  
 SEE SHEET LA-C-045 FOR PLOT PLAN,  
 SHEET LA-C-046 FOR GRADING PLAN  
 AND SHEET LA-C-047 FOR UTILITY PLAN  
 AT END-STATION (SOUTHEAST ARM)



This document and the design it covers are the property of PARSONS. They are loaned only with the borrower's expressed written agreement that they will not be reproduced, copied, loaned, exhibited, or used in any other way, except by written consent from PARSONS to the borrower.

NO.	DATE	BY	CHKD	ENGR	PROJ	DESCRIPTION
B	7/24/96	WRB	ML	UB	TDM	ISSUED FOR BID
A	6/14/96	WRB	ML	UB	TDM	FINAL DESIGN REVIEW

DRAWN	WRB
CHECKED	
ENGINEER	
PROJ	

**PARSONS**  
 100 WEST WALNUT STREET  
 PASADENA, CALIFORNIA

**LIGO**  
 CALIFORNIA INSTITUTE OF TECHNOLOGY  
 MASSACHUSETTS INSTITUTE OF TECHNOLOGY

**LASER INTERFEROMETER  
 GRAVITATIONAL-WAVE OBSERVATORY  
 SITE NO. 2 - LIVINGSTON, LOUISIANA**

CIVIL  
 SOUTHEAST ARM  
 PLAN AND PROFILE  
 STA 126+00 TO STA 133+00

AS NOTED PPI50969 8094  
**LA-C-040**

Mon Jul 22 08:39:10 1996 s3-v18b2 J:\PLOTS\QUEUES\18B2\CE040A.PRF