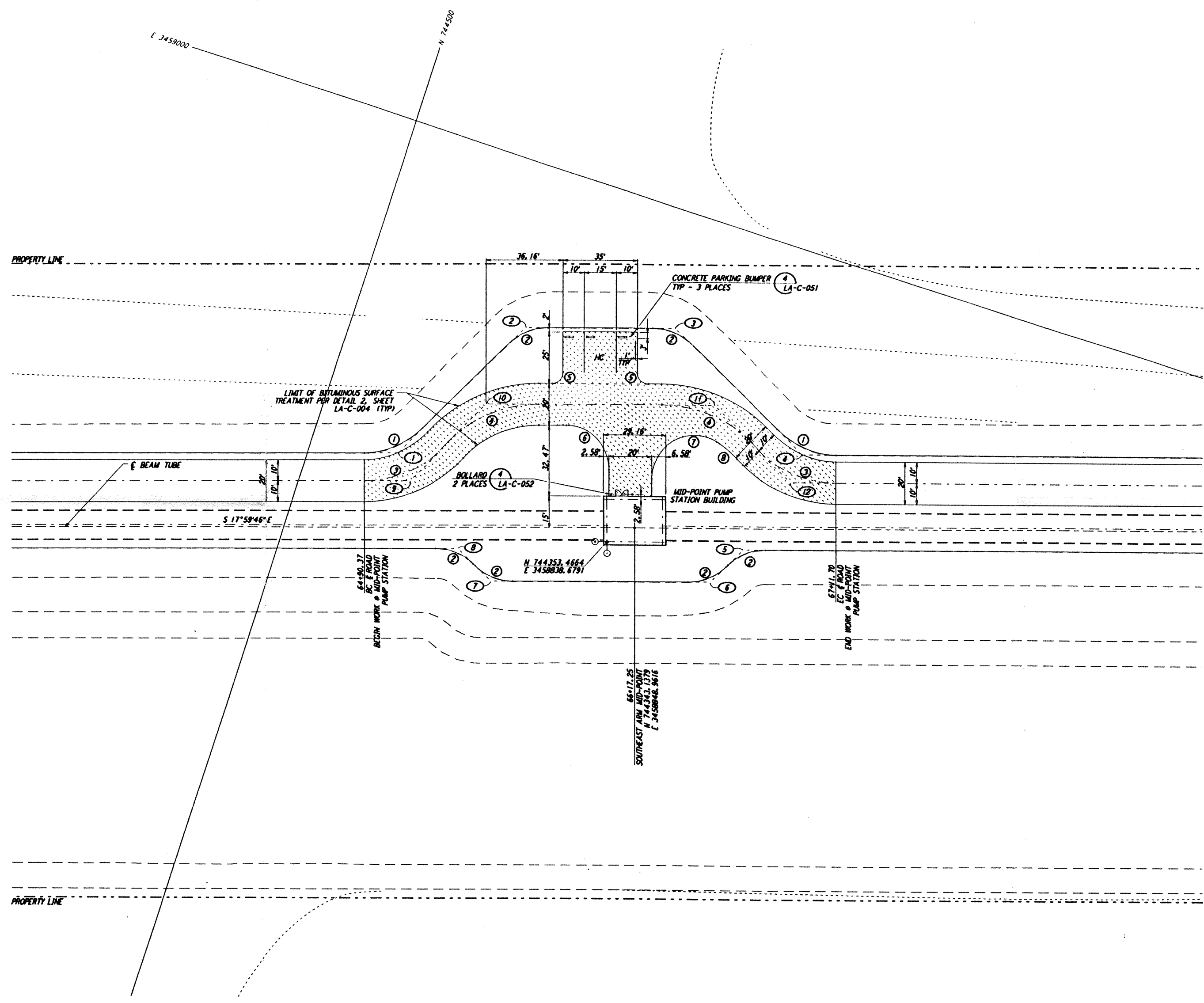
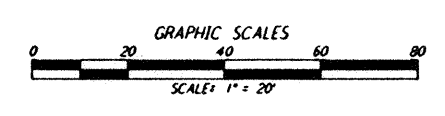
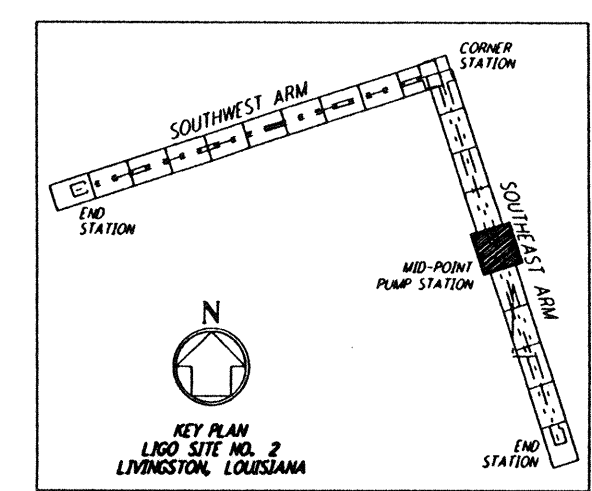


**NOTES:**  
 1. SEE SHEET LA-C-002 FOR GENERAL NOTES, LEGEND AND ABBREVIATIONS.



CURVE DATA					
NO.	Δ	RADIUS	LENGTH	TANGENT	REMARK
1	45°00'00"	39'	30.63'	16.16'	EDGE OF PAD (EXIST)
2	45°00'00"	25'	19.63'	10.36'	EDGE OF PAD (EXIST)
3	45°00'00"	52'	40.84'	21.54'	EDGE OF PAD (EXIST)
4	45°00'00"	60'	47.12'	24.85'	EDGE OF ROAD
5	90°00'00"	5'	7.85'	5.00'	EDGE OF ROAD
6	90°00'00"	20'	31.42'	20.00'	
7	120°53'25"	20'	42.20'	35.27'	
8	14°06'35"	50'	12.31'	6.19'	

COORDINATES			REMARK
NO.	NORTH	EAST	
1	744453.2558	3458848.0417	PI EDGE OF PAD (EXIST)
2	744421.0616	3458822.9895	PI EDGE OF PAD (EXIST)
3	744354.4348	3458944.6329	PI EDGE OF PAD (EXIST)
4	744279.4870	3458906.4396	PI EDGE OF PAD (EXIST)
5	744291.7284	3458855.1473	PI EDGE OF PAD (EXIST)
6	744301.6935	3458835.5930	PI EDGE OF PAD (EXIST)
7	744399.6545	3458803.7709	PI EDGE OF PAD (EXIST)
8	744419.2088	3458813.7361	PI EDGE OF PAD (EXIST)
9	744450.1181	3458837.3414	PI EDGE OF ROAD
10	744427.3479	3458882.0229	PI EDGE OF ROAD
11	744325.2733	3458915.1812	PI EDGE OF ROAD
12	744280.5922	3458892.4109	PI EDGE OF ROAD



This document and the design it covers are the property of PARSONS. They are loaned only with the borrower's expressed written agreement that they will not be reproduced, copied, loaned, exhibited, or used in any other way, except by written consent from PARSONS to the borrower.

This document and the design it covers are the property of PARSONS. They are loaned only with the borrower's expressed written agreement that they will not be reproduced, copied, loaned, exhibited, or used in any other way, except by written consent from PARSONS to the borrower.

NO.	DATE	BY	CHKD	ENGR	PROJ	DESCRIPTION
B	7/24/96	WRB	ML	UB	TDM	ISSUED FOR BID
A	6/14/96	WRB	ML	UB	TDM	FINAL DESIGN REVIEW

DRAWN	WRB
CHECKED	
ENGINEER	
PROJ	

**PARSONS**  
 100 WEST WALNUT STREET  
 PASADENA, CALIFORNIA

**LIGO**  
 CALIFORNIA INSTITUTE OF TECHNOLOGY  
 MASSACHUSETTS INSTITUTE OF TECHNOLOGY

LASER INTERFEROMETER  
 GRAVITATIONAL-WAVE OBSERVATORY  
 SITE NO. 2 - LIVINGSTON, LOUISIANA

CIVIL  
 SOUTHEAST ARM  
 PUMP STATION  
 PLOT PLAN

SCALE: 1" = 20'  
 CONTRACT NUMBER: PPI50969  
 PROJECT NUMBER: 8094

**LA-C-041**

Mon Jul 22 09:53:53 1996 s3-v18b2 J:\PLOTS\QUEUES\182\CE041.PRF