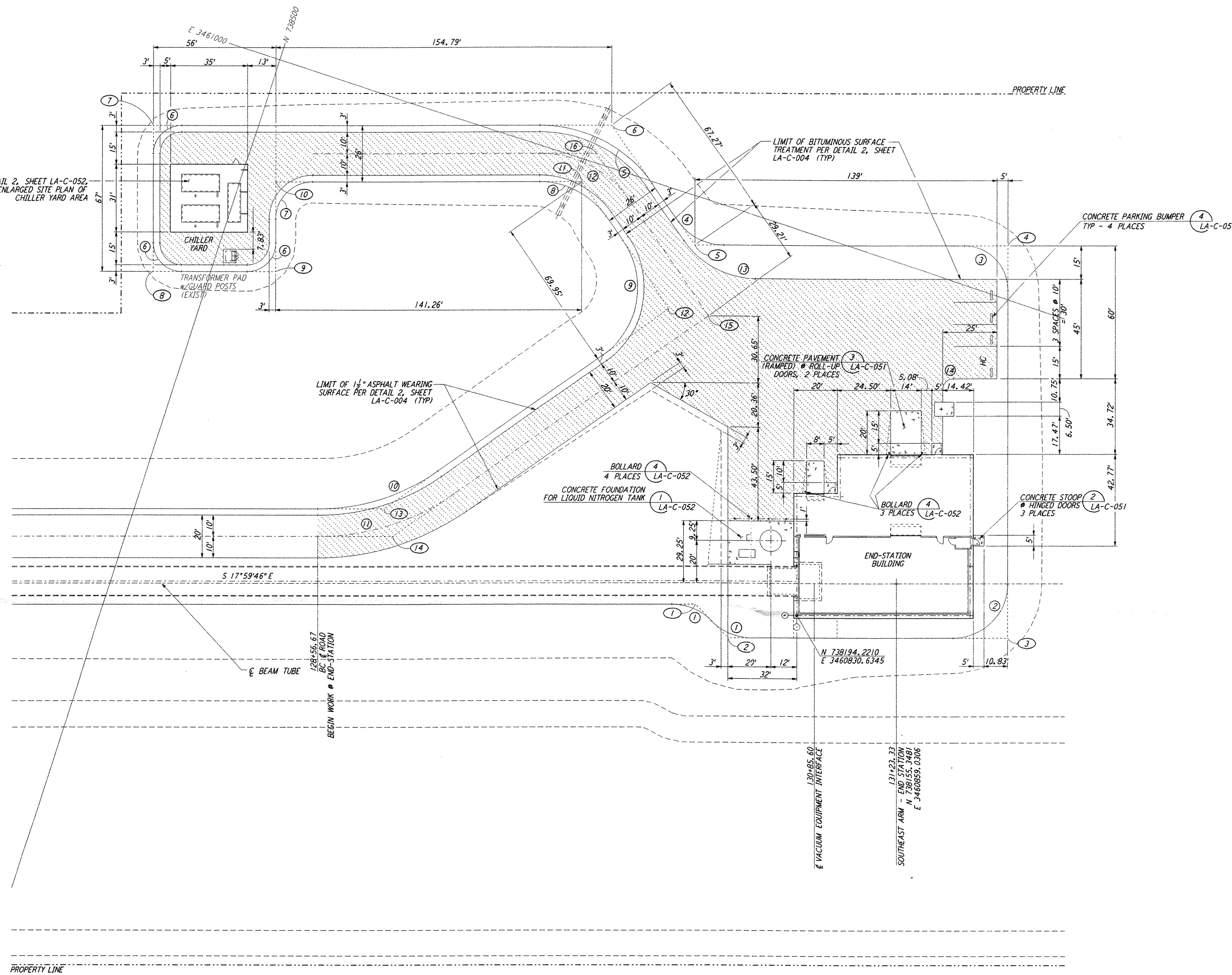


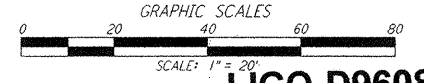
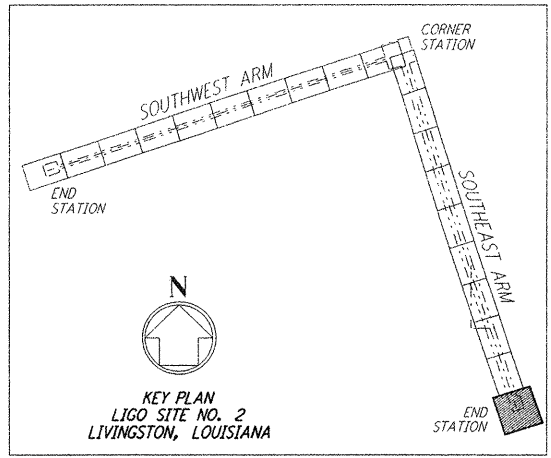
SEE DETAIL 2, SHEET LA-C-052
 FOR ENLARGED SITE PLAN OF
 CHILLER YARD AREA



NOTES:
 1. SEE SHEET LA-C-002 FOR GENERAL NOTES, LEGEND AND ABBREVIATIONS.

CURVE DATA					
NO.	Δ	RADIUS	LENGTH	TANGENT	REMARK
1	46°23'52"	25'	20.24'	10.71'	EDGE OF PAD (EXIST)
2	90°00'00"	25'	39.27'	25.00'	EDGE OF PAD (EXIST)
3	90°00'00"	20'	31.42'	20.00'	EDGE OF PAD (EXIST)
4	55°00'00"	25'	24.00'	13.01'	EDGE OF PAD (EXIST)
5	55°00'00"	63'	60.48'	32.80'	EDGE OF PAD (EXIST)
6	90°00'00"	13'	20.42'	13.00'	EDGE OF PAD (EXIST)
7	90°00'00"	17'	26.70'	17.00'	EDGE OF PAD (EXIST)
8	55°00'00"	37'	35.52'	19.26'	EDGE OF PAD (EXIST)
9	90°00'00"	37'	58.12'	37.00'	EDGE OF PAD (EXIST)
10	35°00'00"	97'	59.25'	30.58'	EDGE OF PAD (EXIST)
11	35°00'00"	110'	67.19'	34.68'	∅ ROAD
12	55°00'00"	50'	48.00'	26.03'	∅ ROAD
13	55°00'00"	40'	38.40'	20.82'	∅ ROAD
14	90°00'00"	5'	7.85'	5.00'	

COORDINATES			
NO.	NORTH	EAST	REMARK
1	738240.1477	3460820.9696	PI EDGE OF PAD (EXIST)
2	738221.2989	3460810.7773	PI EDGE OF PAD (EXIST)
3	738098.6358	3460850.6170	PI EDGE OF PAD (EXIST)
4	738154.4793	3461022.5245	PI EDGE OF PAD (EXIST)
5	738291.4282	3460978.0370	PI EDGE OF PAD (EXIST)
6	738345.1456	3461018.5221	PI EDGE OF PAD (EXIST)
7	738545.6226	3460953.3889	PI EDGE OF PAD (EXIST)
8	738524.9199	3460889.6677	PI EDGE OF PAD (EXIST)
9	738471.6601	3460906.9714	PI EDGE OF PAD (EXIST)
10	738484.3293	3460945.9644	PI EDGE OF PAD (EXIST)
11	738349.9850	3460989.6121	PI EDGE OF PAD (EXIST)
12	738294.1309	3460947.5166	PI EDGE OF PAD (EXIST)
13	738390.7051	3460819.3766	PI EDGE OF PAD (EXIST)
14	738382.7902	3460808.2789	PI ∅ ROAD
15	738275.9249	3460950.0741	∅ ROAD INTERSECTION
16	738347.5656	3461004.0669	PI ∅ ROAD



LIGO-D960858-01-0

LASER INTERFEROMETER
 GRAVITATIONAL-WAVE OBSERVATORY
 SITE NO. 2 - LIVINGSTON, LOUISIANA

TITLE: CIVIL SOUTHEAST ARM END-STATION PLOT PLAN

SCALE: 1" = 20'

CONTRACT NUMBER: PPI50969

PROJECT NUMBER: 8094

SHEET NUMBER: LA-C-045

PARSONS
 100 WEST WALNUT STREET
 PASADENA, CALIFORNIA

LIGO
 CALIFORNIA INSTITUTE OF TECHNOLOGY
 MASSACHUSETTS INSTITUTE OF TECHNOLOGY

ISSUED FOR CONSTRUCTION

DRAWN	WRB	11-15-96
CHECKED	ML	11-15-96
ENGINEER	JB	11-15-96
PROJ	TDM	11-15-96

AS-BUILT DRAWINGS

NO.	DATE	BY	CHKD	ENGR	PROJ	DESCRIPTION
1	08-07-98	WRB				ISSUED FOR AS-BUILT

This document and the design it covers are the property of PARSONS. They are loaned only with the borrower's expressed written agreement that they will not be reproduced, copied, loaned, exhibited, or used in any other way, except by written consent from PARSONS to the borrower.