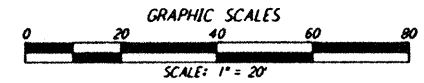
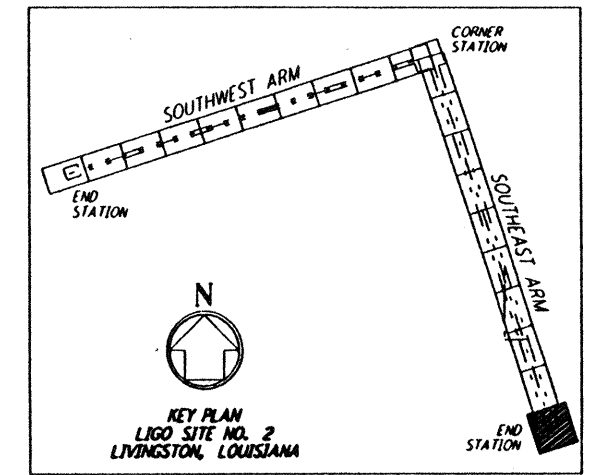
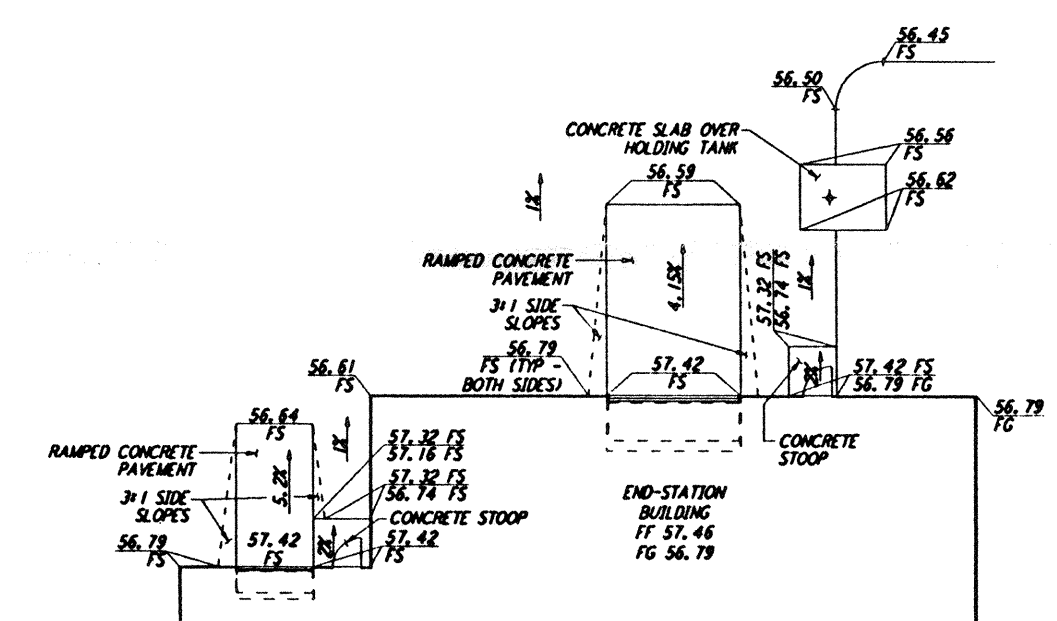
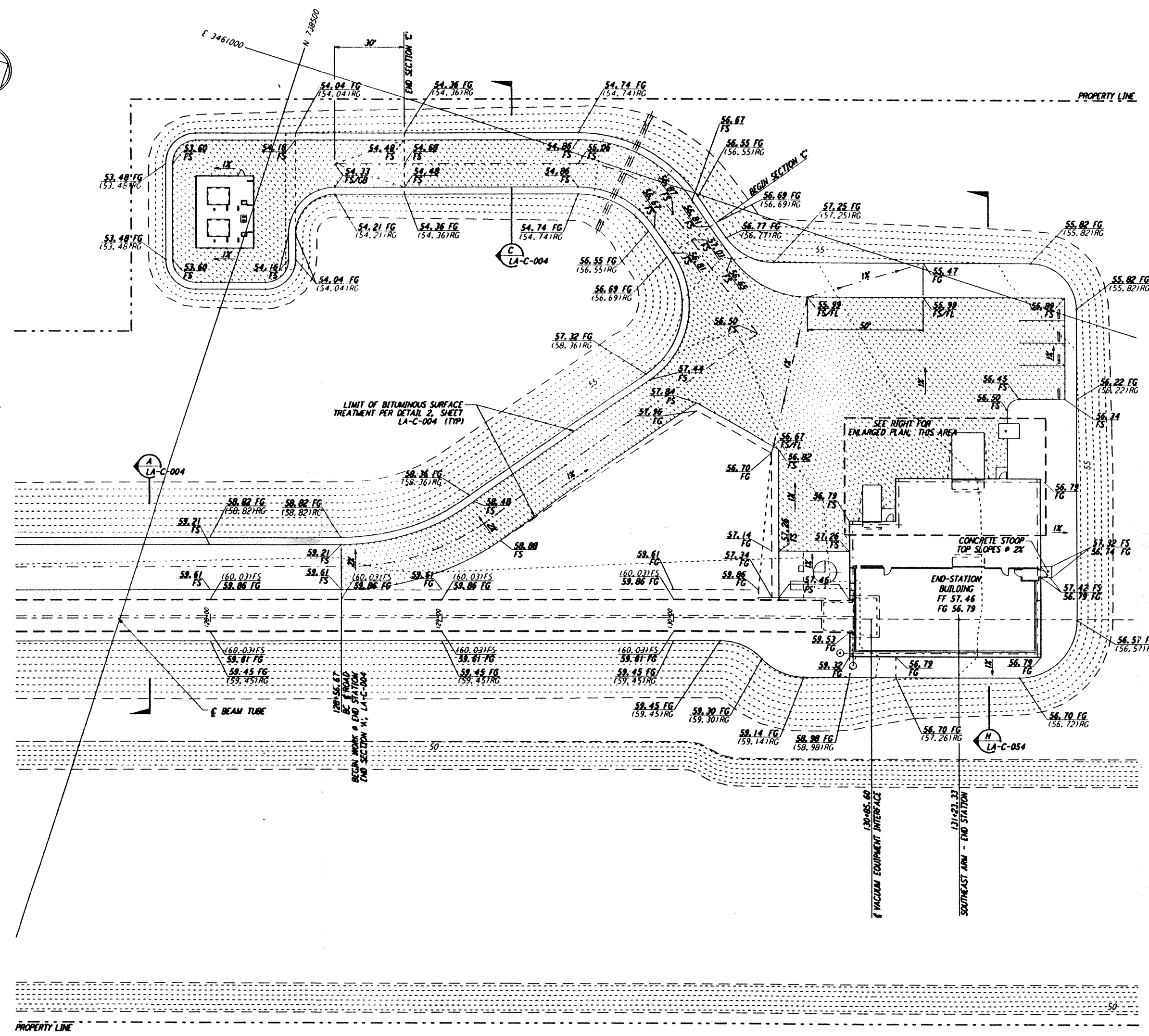
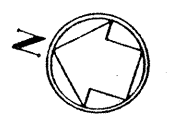


NOTES:
1. SEE SHEET LA-C-002 FOR GENERAL NOTES, LEGEND AND ABBREVIATIONS.

This document and the design it covers are the property of PARSONS. They are loaned only with the borrower's expressed written agreement that they will not be reproduced, copied, loaned, exhibited, or used in any other way, except by written consent from PARSONS to the borrower.



NO.	DATE	BY	CHK'D	ENGR	PROJ	DESCRIPTION
B	7/24/96	WRB	ML	YB	TDW	ISSUED FOR BID
A	6/14/96	WRB	ML	UB	TDW	FINAL DESIGN REVIEW

DRAWN	WRB
CHECKED	
ENGINEER	
PROJ	

PARSONS
100 WEST WALNUT STREET
PASADENA, CALIFORNIA

LIGO
CALIFORNIA INSTITUTE OF TECHNOLOGY
MASSACHUSETTS INSTITUTE OF TECHNOLOGY

LASER INTERFEROMETER GRAVITATIONAL-WAVE OBSERVATORY SITE NO. 2 - LIVINGSTON, LOUISIANA			
TITLE	SCALE	CONTRACT NUMBER	PROJECT NUMBER
CIVIL SOUTHWEST ARM END-STATION GRADING PLAN	1" = 20'	PP150969	8094
DRAWING NO. LA-C-046		REVISION	

Mon Jul 22 12:13:10 1996 s3-v18b2 J:\PLOTS\QUEUES\18B2\CE046.PRF