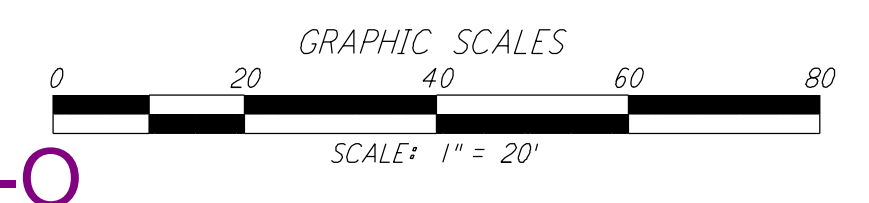
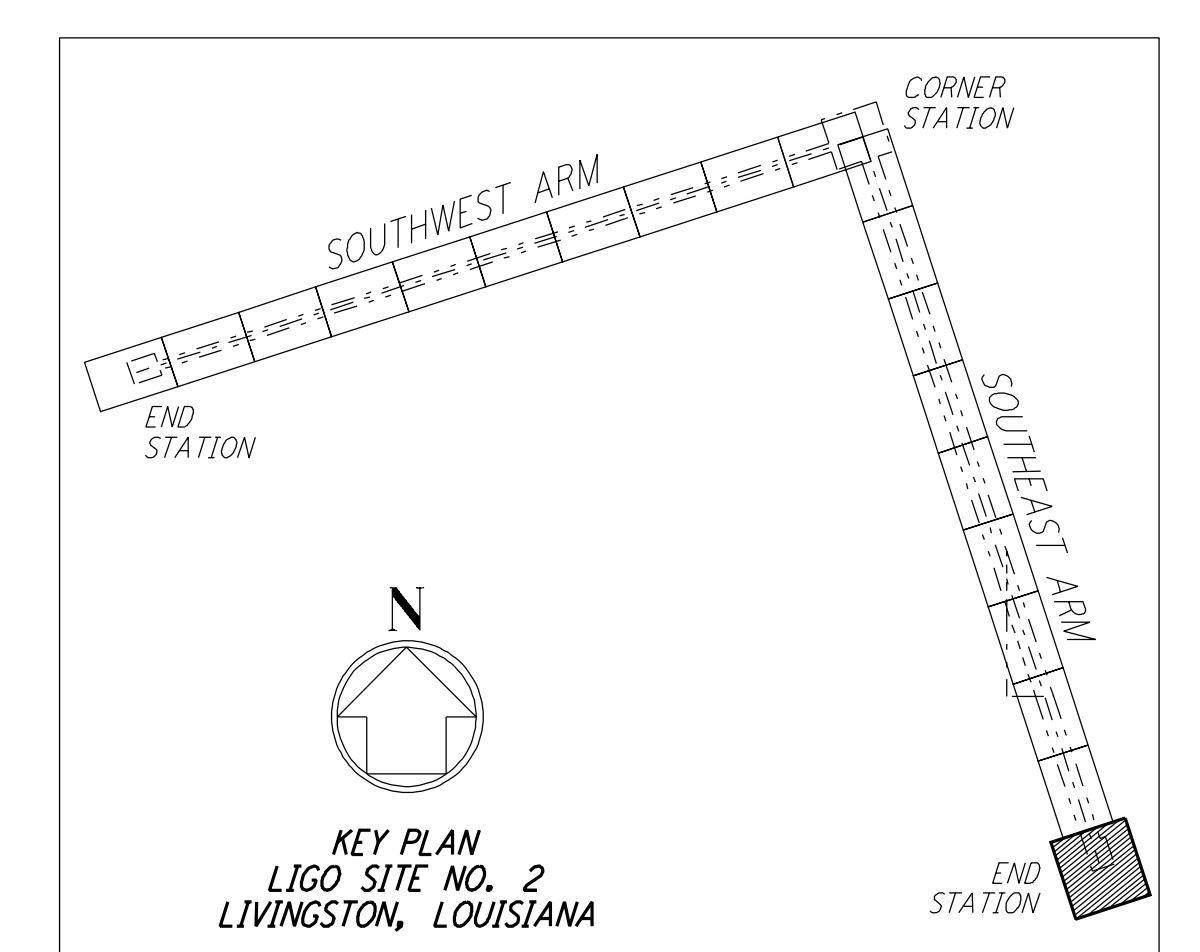
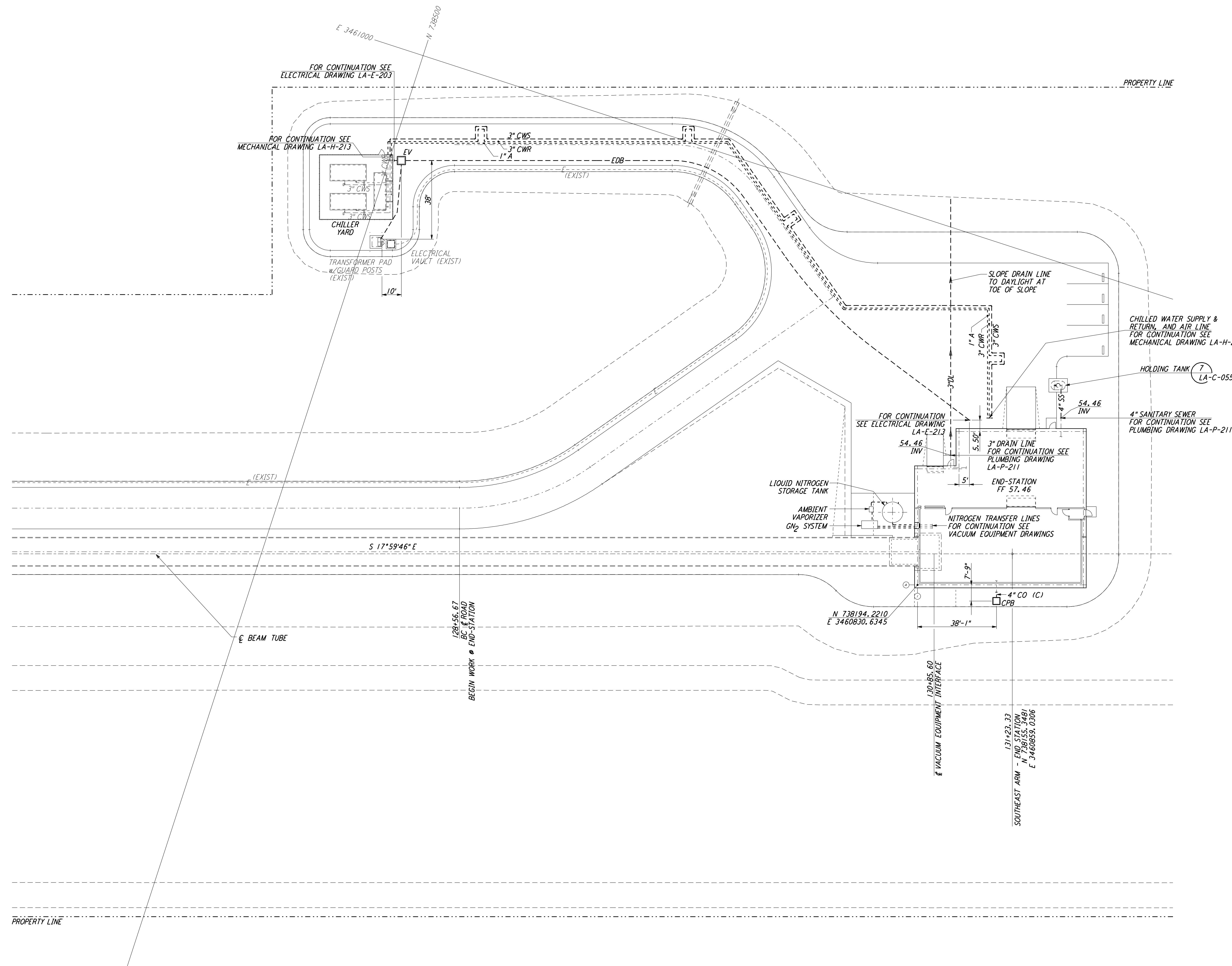
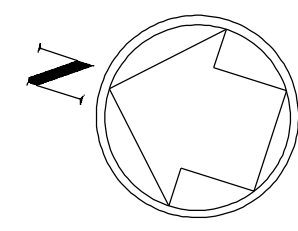


NOTES:
 1. SEE SHEET LA-C-002 FOR GENERAL NOTES, LEGEND AND ABBREVIATIONS.



This document and the design it covers are the property of PARSONS. They are loaned only with the borrower's expressed written agreement that they will not be reproduced, copied, loaned, exhibited, or used in any other way, except by written consent from PARSONS to the borrower.

NO.	DATE	BY	CHKD	ENGR	PROJ	DESCRIPTION
1	08-07-98	WRB				ISSUED FOR AS-BUILT

ISSUED FOR CONSTRUCTION			
DRAWN	WRB	11-15-96	
CHECKED	ML	11-15-96	
ENGINEER	JB	11-15-96	
PROJ	TDM	11-15-96	
AS-BUILT DRAWINGS			

100 WEST WALNUT STREET
PASADENA, CALIFORNIA

CALIFORNIA INSTITUTE OF TECHNOLOGY
MASSACHUSETTS INSTITUTE OF TECHNOLOGY

LIGO-D960860-01-0

LASER INTERFEROMETER
GRAVITATIONAL-WAVE OBSERVATORY
SITE NO. 2 - LIVINGSTON, LOUISIANA

TITLE	CIVIL SOUTHEAST ARM END-STATION UTILITY PLAN	SCALE 1" = 20'	CONTRACT NUMBER PP150969	PROJECT NUMBER 8094
SHEET NUMBER	LA-C-047		REVISIONS	

Tue Oct 6 15:56:59 1998 en:\pl\ce\ref\33730.dwg H:\ODD\DESIGN\2082\CE047.PRF