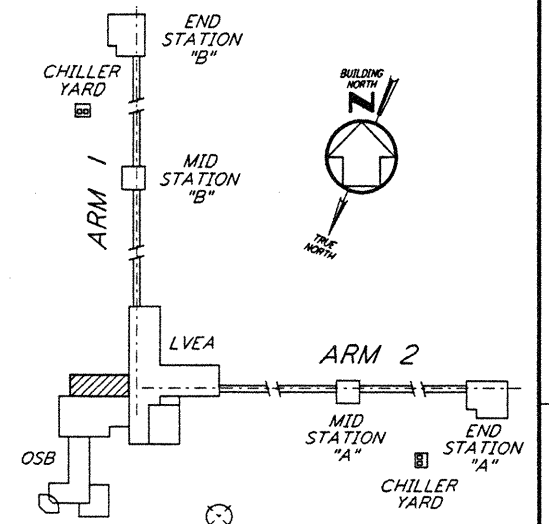
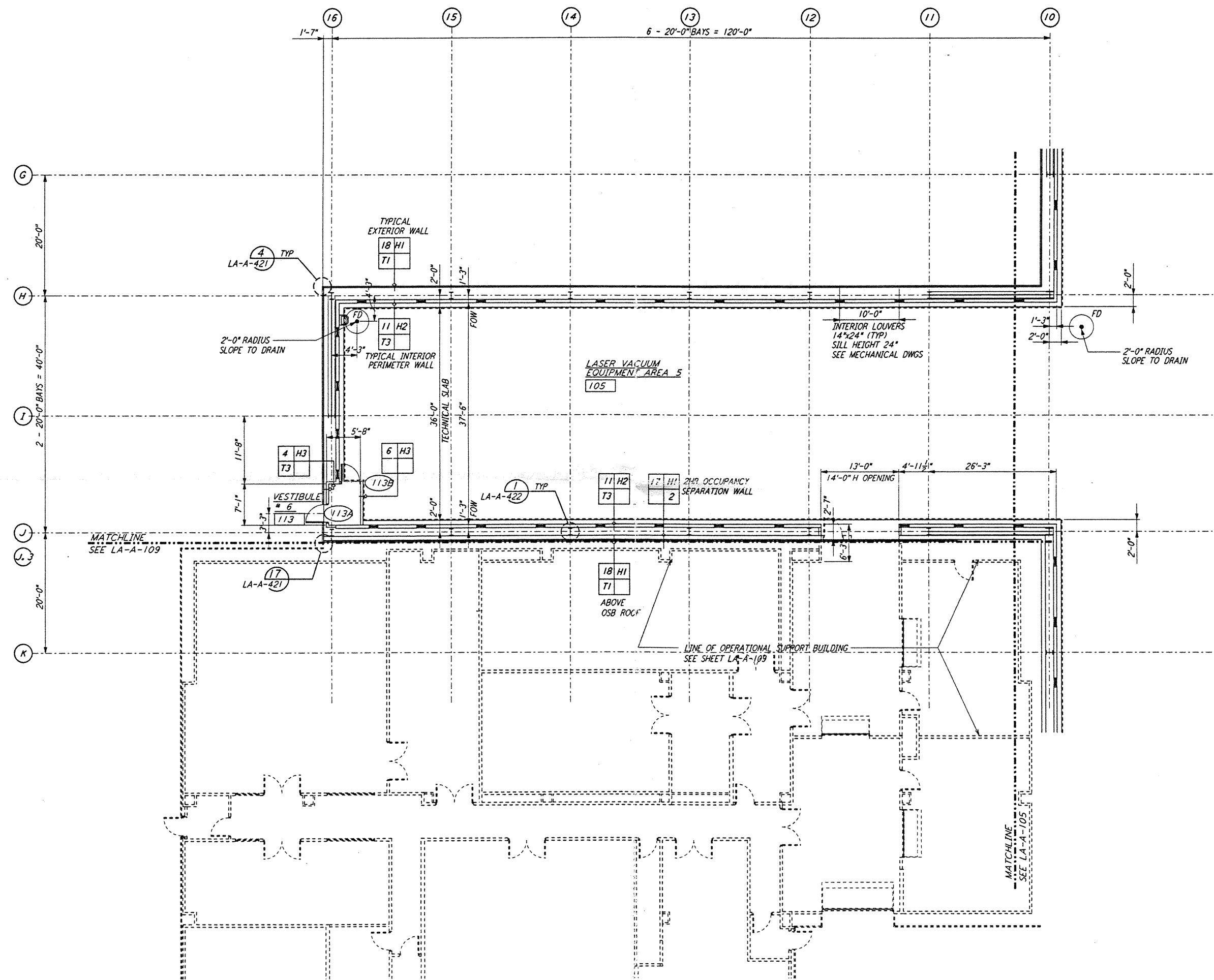
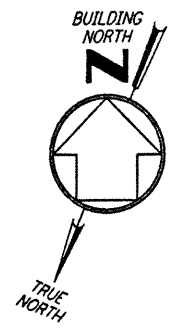


NOTE:
 1. SEE SPECIFICATIONS FOR ADDITIONAL INFORMATION AND SCHEDULES
 2. PROVIDE CONTROL JOINTS @ 40'-0" O.C. MAX THROUGHOUT LVEA AREAS - AT GRID LINES AND WHERE OTHERWISE INDICATED.



0 8 16 24 32 FT
 1" = 16'-0"
 DATUM POINT EL +100.00 = 61.44' (LVEA)
 DATUM POINT EL +100.00 = 61.44' (OSB)

KEY PLAN
 LIGO-D960870-B-0

This document and the design it covers are the property of PARSONS. They are loaned only with the borrower's expressed written agreement that they will not be reproduced, copied, loaned, exhibited, or used in any other way, except by written consent from PARSONS to the borrower.

NO.	DATE	BY	CHKD	ENGR	PROJ	DESCRIPTION
B	6-14-96	CTK	BK	SF	TDM	FINAL DESIGN REVIEW
A	10/31/95	SF	SF	TDM		PRELIMINARY DESIGN REVIEW

DRAWN	CKT
CHECKED	
ENGINEER	
PROJ	

PARSONS
 100 WEST WALNUT STREET
 PASADENA, CALIFORNIA

LIGO
 CALIFORNIA INSTITUTE OF TECHNOLOGY
 MASSACHUSETTS INSTITUTE OF TECHNOLOGY

LASER INTERFEROMETER
 GRAVITATIONAL-WAVE OBSERVATORY
 SITE NO. 2 - LIVINGSTON, LOUISIANA

TITLE: ARCHITECTURAL CORNER STATION LVEA PARTIAL FLOOR PLAN SHEET 3

SCALE: AS NOTED

CONTRACT NUMBER: PP150969

PROJECT NUMBER: 8094

SHEET NUMBER: LA-A-104