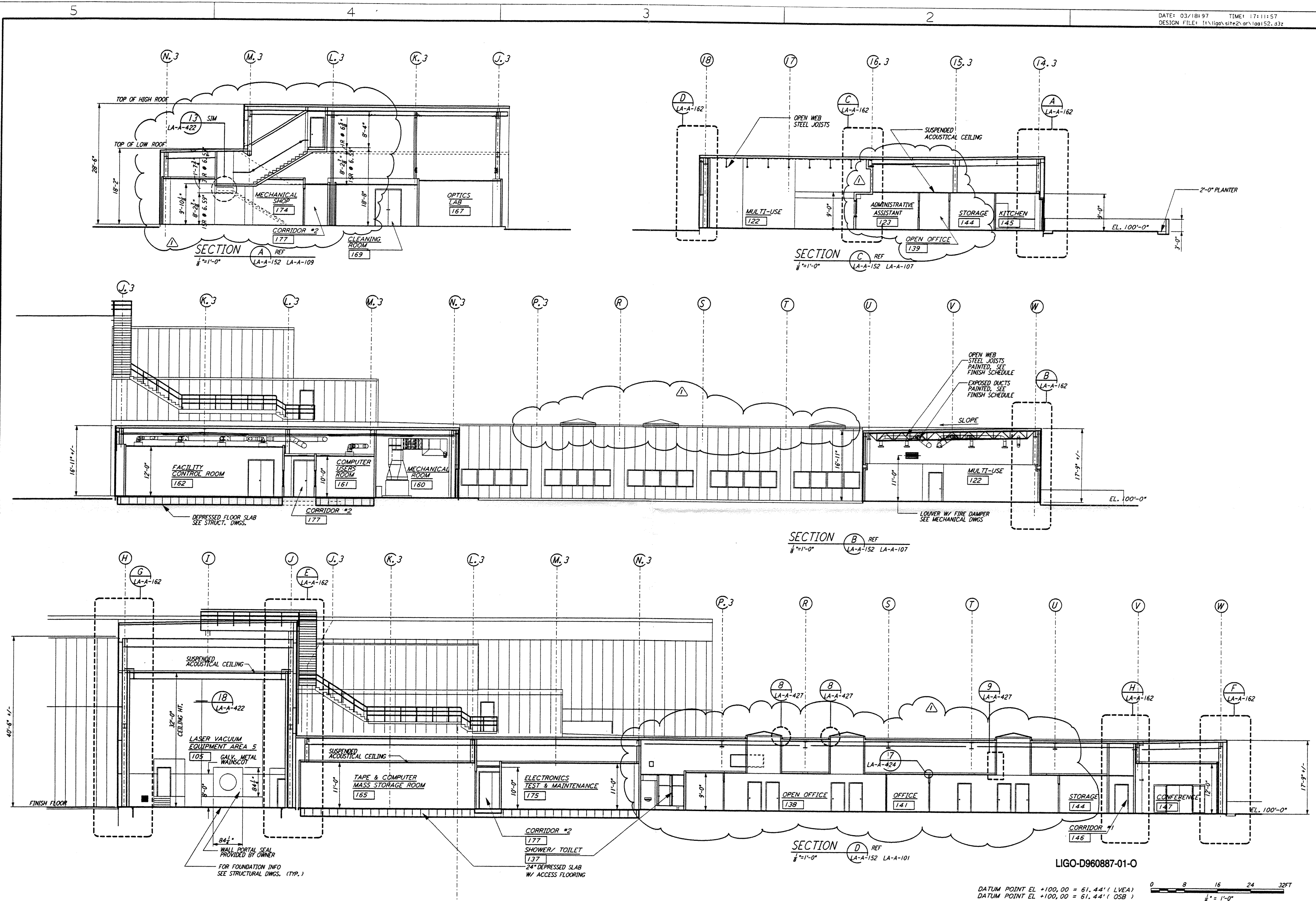


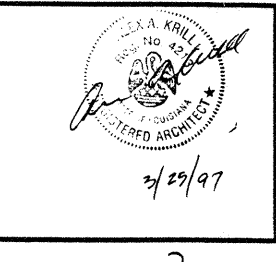
This document and the design it covers are the property of PARSONS. They are loaned only with the borrower's expressed written agreement that they will not be reproduced, copied, loaned, exhibited, or used in any other way, except by written consent from PARSONS to the borrower.



DATUM POINT EL +100.00 = 61.44' (LVEA)
 DATUM POINT EL +100.00 = 61.44' (OSB)
 0 8 16 24 32 FT
 1/4" = 1'-0"

NO.	DATE	BY	CHKD	ENGR	PROJ	REVISION	DESCRIPTION
1	2-28-97	CKT	TB	AK	TDM	OSB	REVISION

ISSUED FOR CONSTRUCTION
DRAWN CKT/DS 11-15-96
CHECKED TB 11-15-96
ENGINEER SF 11-15-96
PROJ MDW 11-15-96



PARSONS
 100 WEST WALNUT STREET
 PASADENA, CALIFORNIA

LIGO
 CALIFORNIA INSTITUTE OF TECHNOLOGY
 MASSACHUSETTS INSTITUTE OF TECHNOLOGY

LASER INTERFEROMETER
 GRAVITATIONAL-WAVE OBSERVATORY
 SITE NO. 2 - LIVINGSTON, LOUISIANA
 ARCHITECTURAL
 CORNER SECTION
 LVEA & OSB SECTIONS
 SHEET 2
LA-A-152