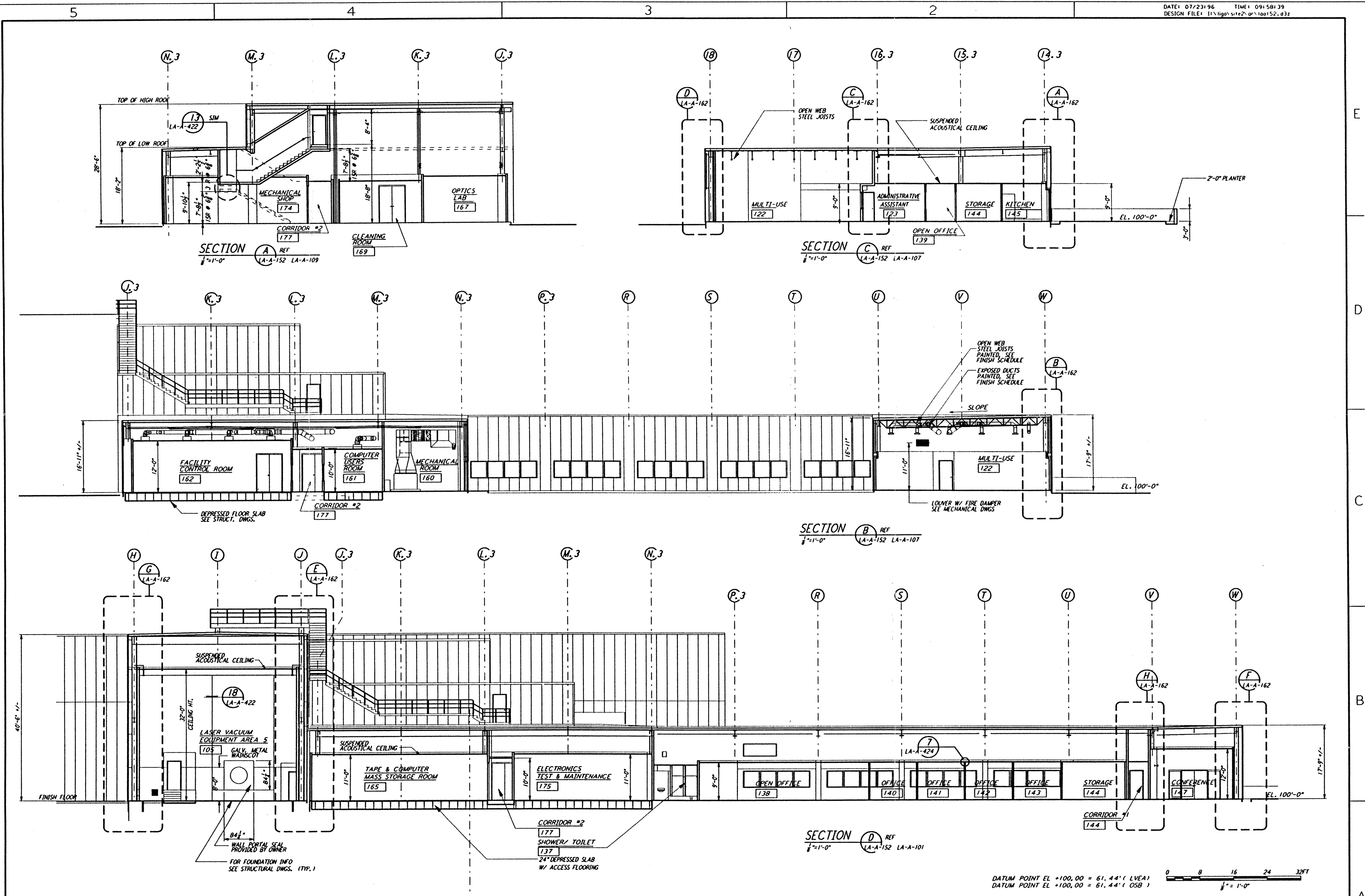


This document and the design it covers are the property of PARSONS. They are loaned only with the borrower's expressed written agreement that they will not be reproduced, copied, loaned, exhibited, or used in any other way, except by written consent from PARSONS to the borrower.



DATUM POINT EL +100.00 = 61.44' (LVEA)
 DATUM POINT EL +100.00 = 61.44' (OSB)
 0 8 16 24 32 FT
 1/8" = 1'-0"

NO.	DATE	BY	CHKD	ENGR	PROJ	DESCRIPTION
C	7-24-96	CKT	TB	BNC	JDM	ISSUED FOR BID
B	6-14-96	CKT	BK	SF	TDM	FINAL DESIGN REVIEW
A	10/31/95	SF	SF	TDM	JDM	PRELIMINARY DESIGN REVIEW

DRAWN	CKT/DS
CHECKED	
ENGINEER	
PROJ	

PARSONS
 100 WEST WALNUT STREET
 PASADENA, CALIFORNIA

LIGO
 CALIFORNIA INSTITUTE OF TECHNOLOGY
 MASSACHUSETTS INSTITUTE OF TECHNOLOGY

**LASER INTERFEROMETER
 GRAVITATIONAL-WAVE OBSERVATORY
 SITE NO. 2 - LIVINGSTON, LOUISIANA**
 ARCHITECTURAL
 CORNER STATION
 LVEA & OSB SECTIONS
 SHEET 2
LA-A-152
 AS NOTED PPI50969 8094
 LIGO-D960887-C-O

Tue Jul 23 09:57:59 1996 s3-v1862 J:\PLOTS\QUEUES\18B2\AR152.PRF