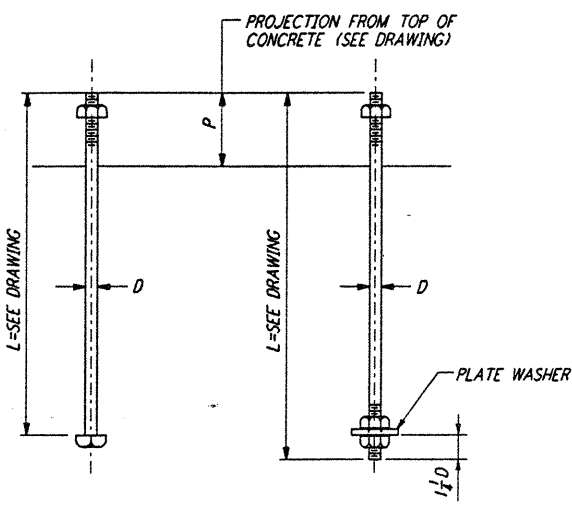


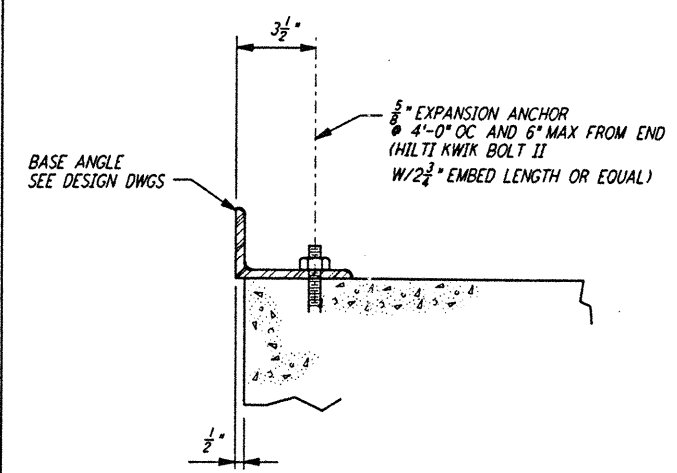
NOTES:

1. BOLT MATERIAL SHALL BE IN ACCORDANCE WITH ASTM A307, UNLESS OTHERWISE SPECIFIED.
2. USE UNIFIED NATIONAL COARSE THREAD, CLASS 2 FIT.
3. USE HEAVY DOUBLE CHAMFER HEX NUTS UP TO 1", AND HEAVY FLAT FACE HEX NUTS LARGER THAN 1".
4. PROVIDE 1 HEX NUT FOR EACH BOLT, UNLESS OTHERWISE NOTED ON DESIGN DRAWINGS.
5. PLATE WASHER MATERIAL SHALL BE ASTM A36, UNLESS OTHERWISE NOTED.
6. FABRICATOR SHALL BUNDLE AND TAG BOLTS BY INDIVIDUAL FOUNDATIONS OR MEMBERS. TAGS SHALL BE WEATHER RESISTANT, WITH MARKS AT LEAST 1/2" HIGH, AND FIRMLY WIRED TO BUNDLES.
7. SLEEVES SHALL NOT BE USED UNLESS SPECIFIED ON THE DESIGN DRAWINGS.

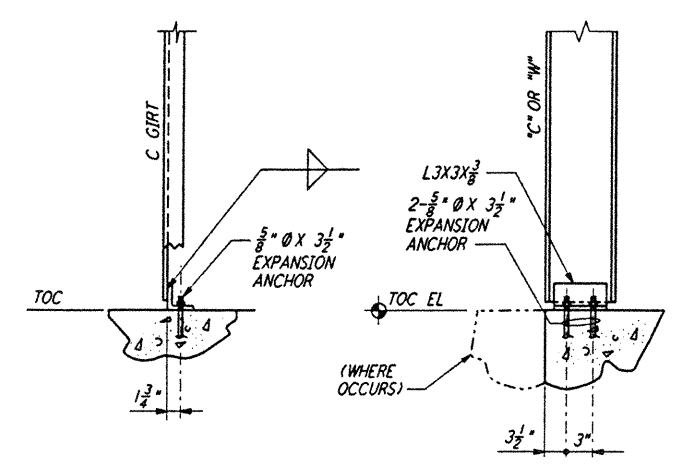


TYPE 1 TYPE 2
ANCHOR BOLTS DETAILS (1)

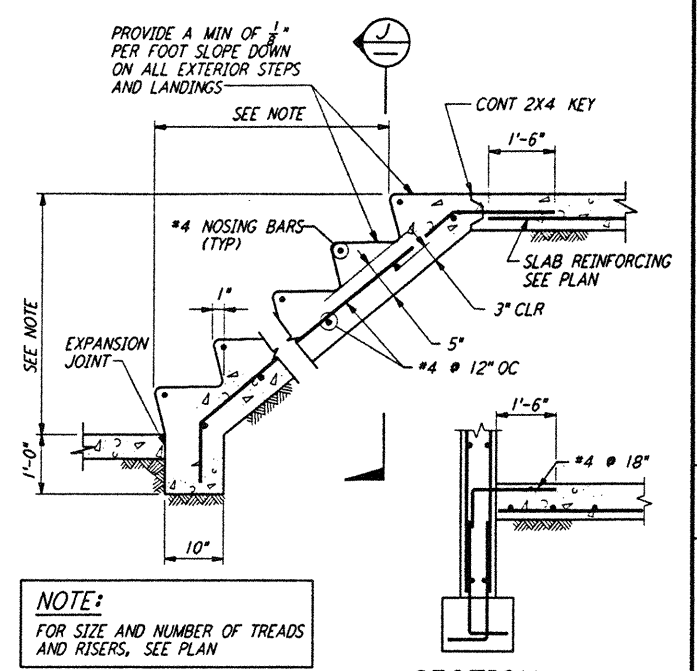
ANCHOR BOLT SCHEDULE				
DIA D	PLATE WASHER	SLEEVE IF REQD		DIA D
		DIA	LENGTH	
1/2"		2"	5"	1 1/2"
3/8"		2"	5"	2 1/8"
3/4"		2"	7"	2 1/2"
7/8"		2"	7"	2 7/8"
1"	2 1/2" X 2 1/2" X 1/8"	3"	10"	3 1/2"
1 1/8"	3" X 3" X 1/2"	3"	10"	3 3/8"
1 1/4"	3 1/2" X 3 1/2" X 1/2"	3"	10"	4"
1 3/8"	3 3/4" X 3 3/4" X 1/2"	4"	15"	4 3/8"
1 1/2"	3 3/4" X 3 3/4" X 3/8"	4"	15"	4 1/2"



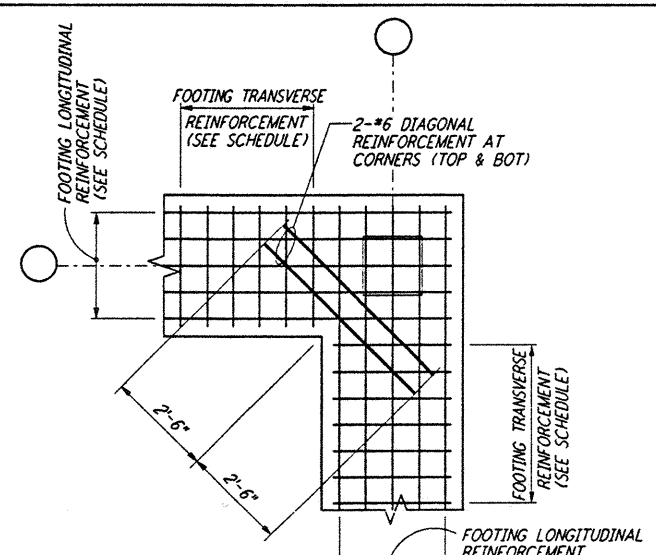
BASE ANGLE CONNECTION
SECTION (A)



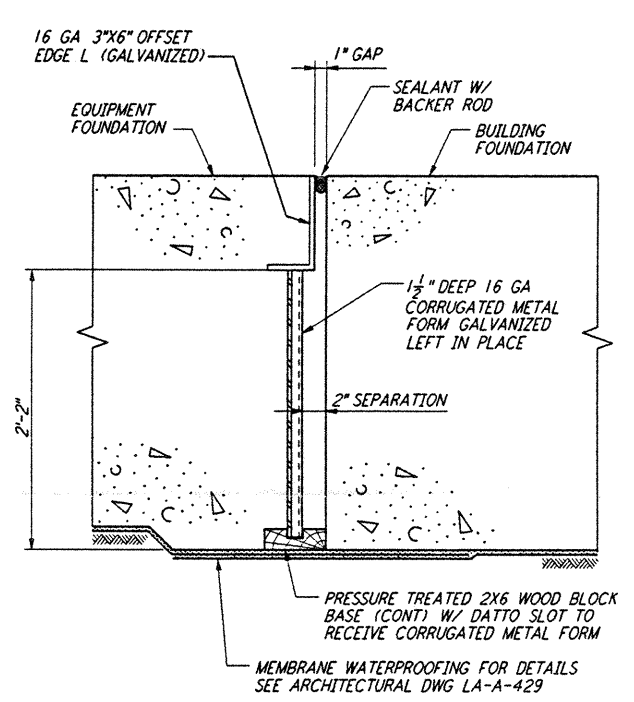
FRONT VIEW SIDE VIEW
DETAIL (2)



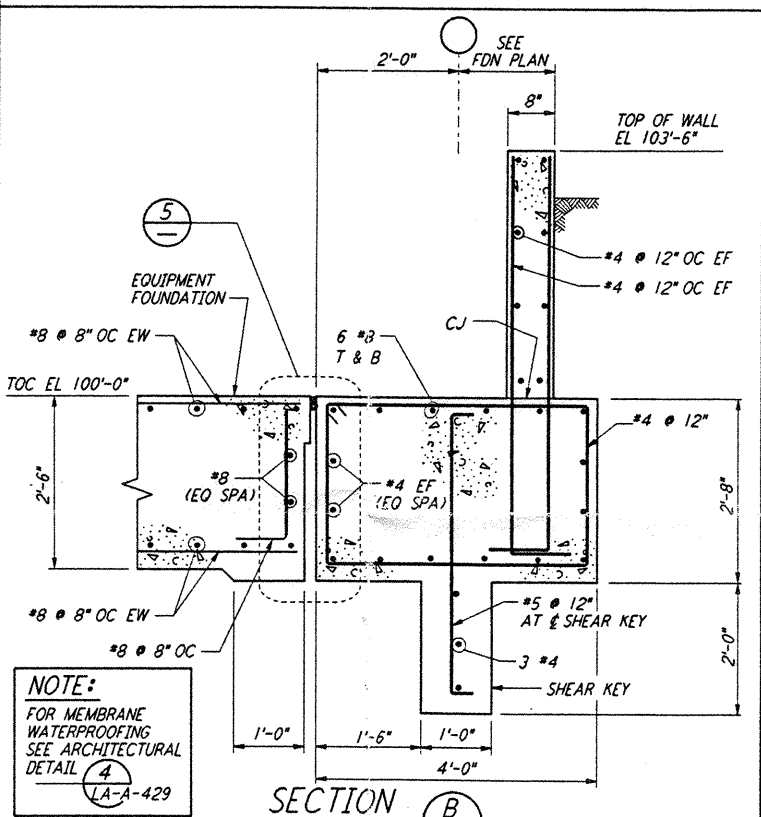
CONCRETE STAIRS ON GRADE (3)



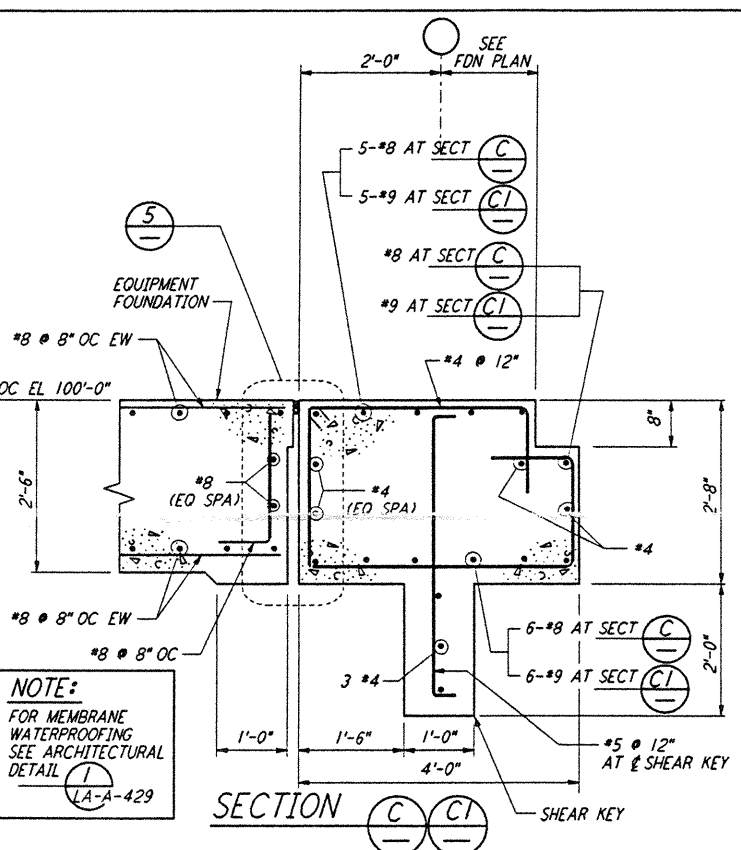
FOOTING DIAGONAL REINFORCEMENT AT CORNERS
DETAIL (4)



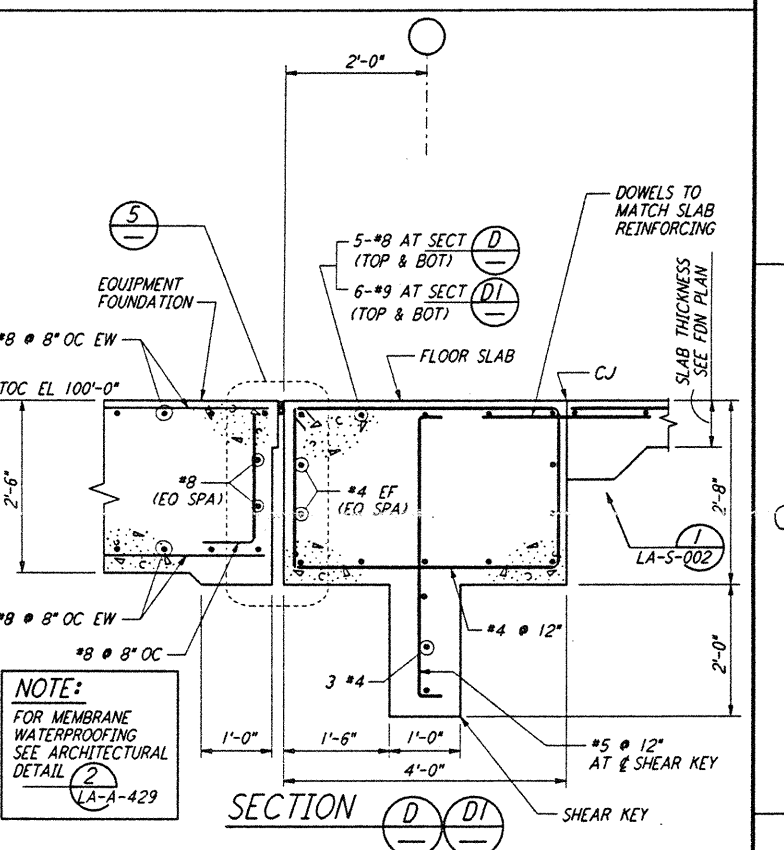
EQUIPT FDN & BLDG FDN INTERFACE
DETAIL (5)



SECTION (B)



SECTION (C)



SECTION (D)

This document and the design it covers are the property of PARSONS. They are loaned only with the borrower's expressed written agreement that they will not be reproduced, copied, loaned, exhibited, or used in any other way, except by written consent from PARSONS to the borrower.

This document and the design it covers are the property of PARSONS. They are loaned only with the borrower's expressed written agreement that they will not be reproduced, copied, loaned, exhibited, or used in any other way, except by written consent from PARSONS to the borrower.

REV. DATE BY CHKD ENGR PROJ DESCRIPTION

NO.	DATE	BY	CHKD	ENGR	PROJ	DESCRIPTION
B	6-14-96	MCS	dm	dm		FINAL DESIGN REVIEW
A	10-31-95	TDM				PRELIMINARY DESIGN REVIEW

DRAWN	MCS
CHECKED	
ENGINEER	
PROJ	



LASER INTERFEROMETER GRAVITATIONAL-WAVE OBSERVATORY
SITE NO. 2 - LIVINGSTON, LOUISIANA

SCALE: NONE PROJECT NUMBER: PPI50969 8094

TITLE: STRUCTURAL STANDARD CONCRETE DETAILS SHEET 2 SHEET NUMBER: LA-S-003