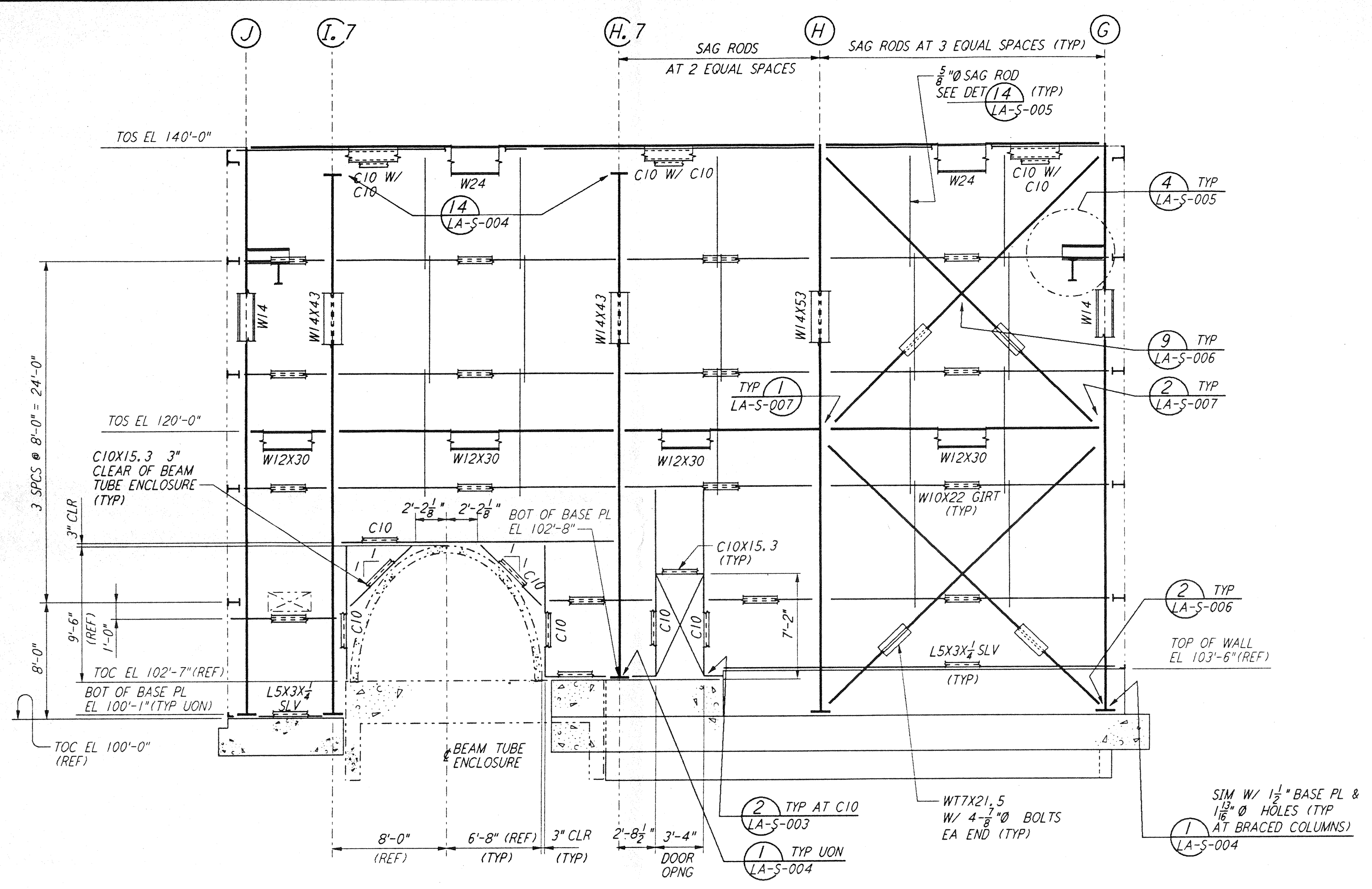
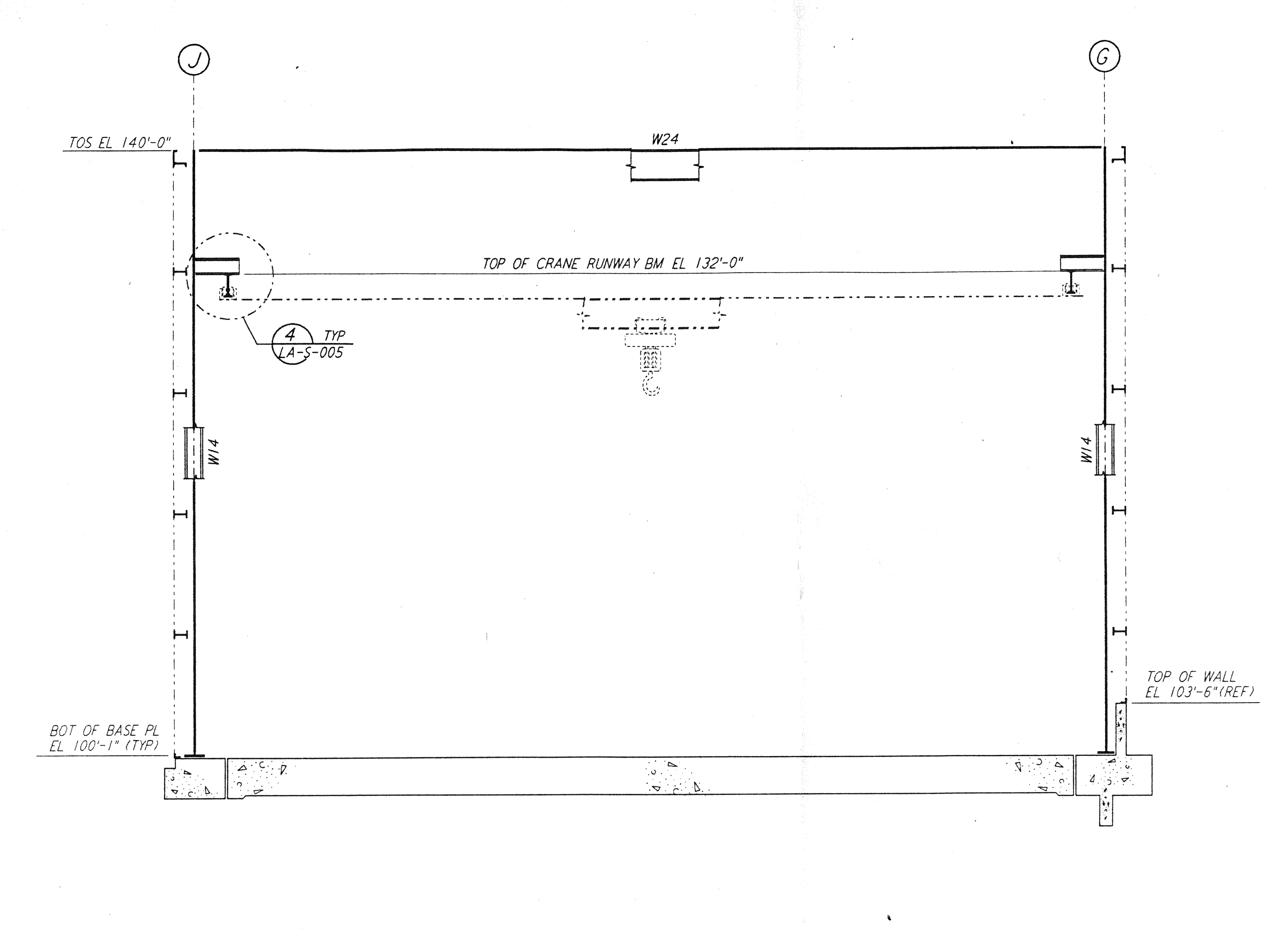


not be reproduced, copied, loaned, exhibited, or used in any other way, except by written consent from PARSONS to the borrower.

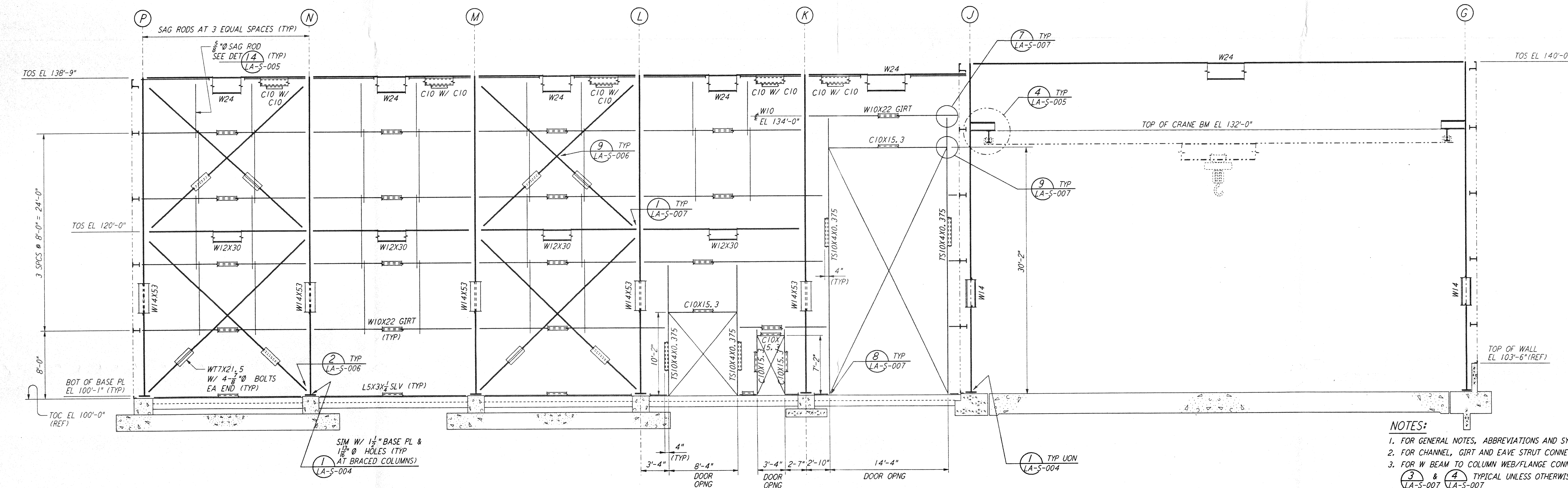
This document and the design it covers are the property of PARSONS. They are loaned only with the borrower's expressed written agreement that they will



ELEVATION AT COLUMN LINE 1
 $\frac{3}{16}'' = 1'-0''$

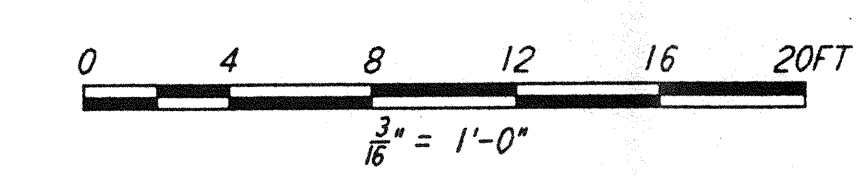


ELEVATION AT COLUMN LINES 2, 3 & 4
 $\frac{3}{16}'' = 1'-0''$



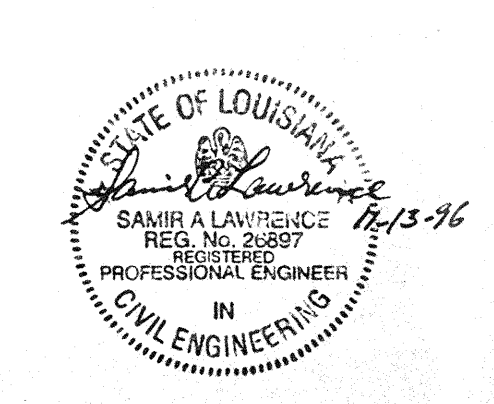
ELEVATION AT COLUMN LINE 5
 $\frac{3}{16}'' = 1'-0''$

- NOTES:**
- FOR GENERAL NOTES, ABBREVIATIONS AND SYMBOLS SEE DRAWING LA-S-001.
 - FOR CHANNEL, GIRT AND EAVE STRUT CONNECTION DETAILS SEE DRAWING LA-S-005.
 - FOR W BEAM TO COLUMN WEB/FLANGE CONNECTIONS, SEE DETAILS (6) LA-S-004, (3) LA-S-007 & (4) LA-S-007 TYPICAL UNLESS OTHERWISE NOTED.
 - FOR BASE ANGLE (L5X3) CONNECTIONS, SEE SECTION (A) LA-S-003.
 - FOR LOCATION OF INTERIOR ROOLED-UP DOORS SEE DETAIL (6) LA-S-007.
 - TRIM VERTICAL BRACING WT7 STEM AS REQUIRED ($\frac{3}{8}'' \times 12''$ APPROX) AT GIRT LOCATION TO CLEAR GIRTS. PROVIDE $2\frac{3}{4}''$ TO 1 TRANSITION AT ENDS OF CUT.



NO.	DATE	BY	CHKD	ENGR	PROJ	DESCRIPTION

ISSUED FOR CONSTRUCTION	DRAWN	MCS	11-15-96
	CHECKED	BBN	11-15-96
	ENGINEER	RP	11-15-96
	PROJ	BDPA	11/15/96



PARSONS
 100 WEST WALNUT STREET
 PASADENA, CALIFORNIA

LIGO
 CALIFORNIA INSTITUTE OF TECHNOLOGY
 MASSACHUSETTS INSTITUTE OF TECHNOLOGY

LASER INTERFEROMETER
 GRAVITATIONAL-WAVE OBSERVATORY
 SITE NO. 2 - LIVINGSTON, LOUISIANA

TITLE	SCALE	CONTRACT NUMBER	PROJECT NUMBER
STRUCTURAL CORNER STATION LVEA FRAMING ELEVATIONS SHEET 1	AS NOTED	PP150969	8094
SHEET NUMBER		REVISIONS	
LA-S-107			