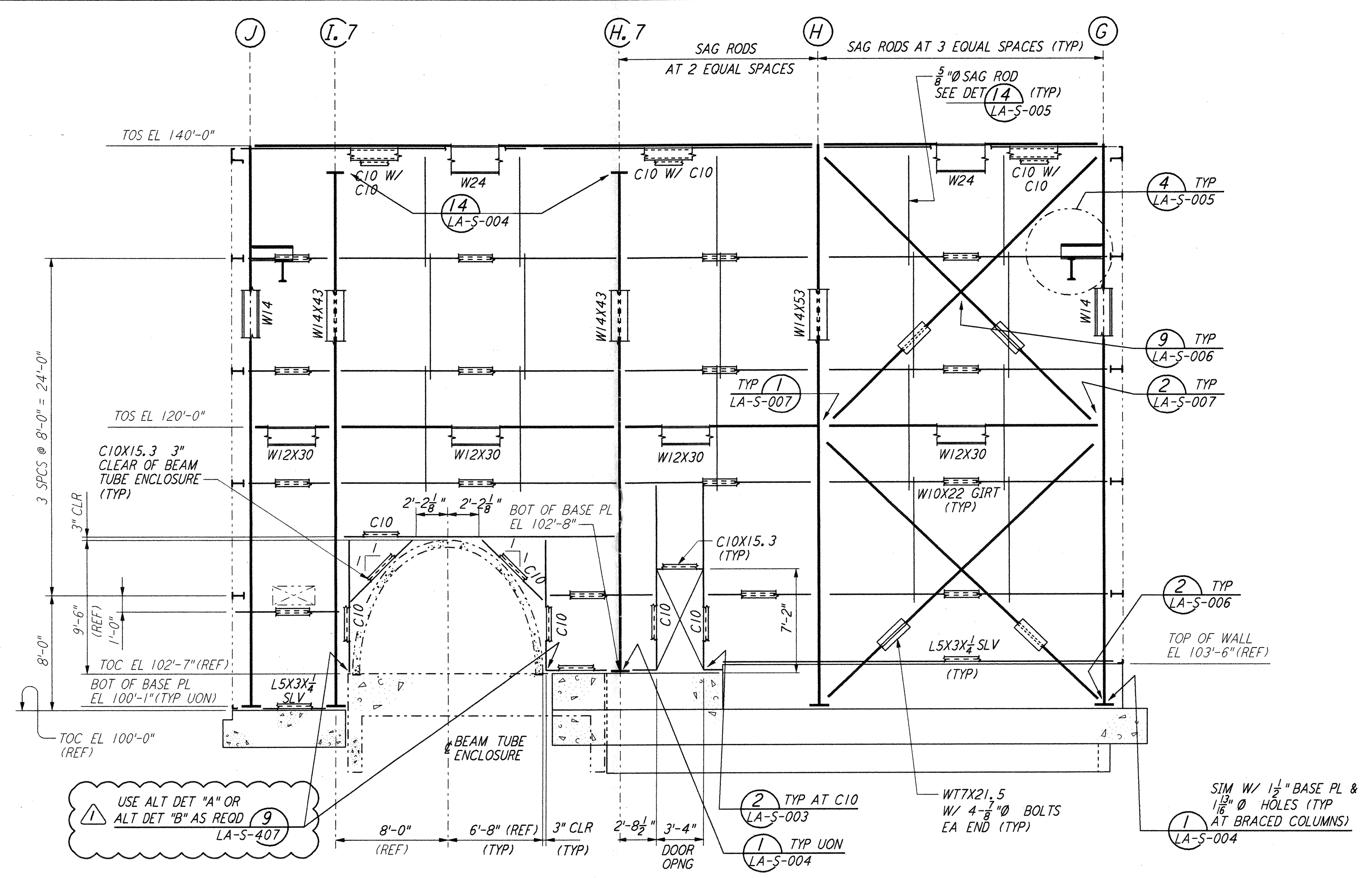
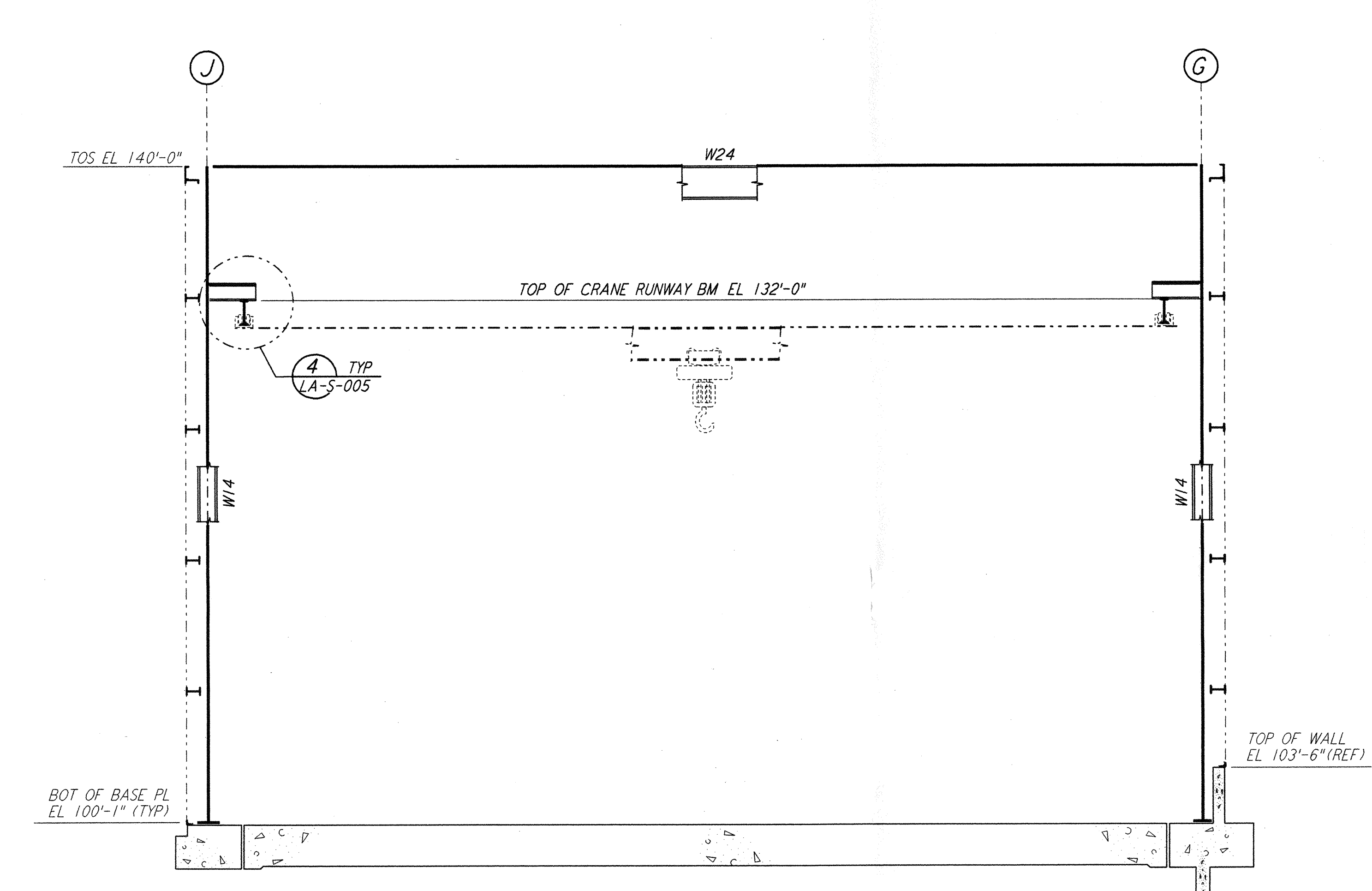


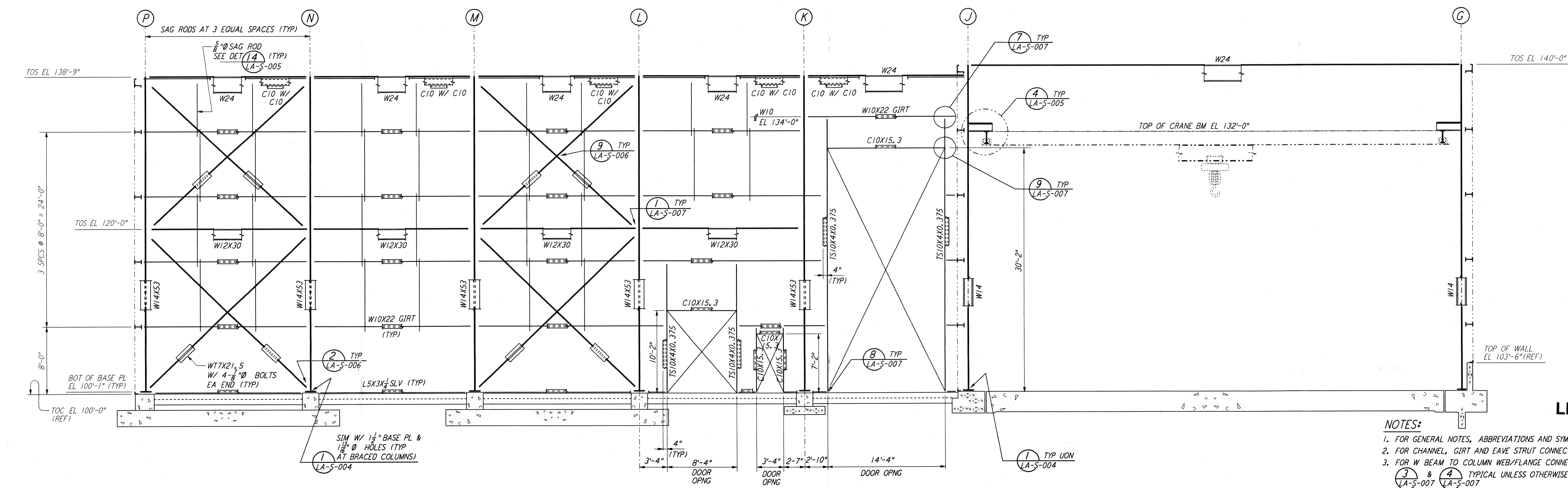
This document and the design it covers are the property of PARSONS. They are loaned only with the borrower's expressed written agreement that they will not be reproduced, copied, loaned, exhibited, or used in any other way, except by written consent from PARSONS to the borrower.



**ELEVATION AT COLUMN LINE 1**  
 $\frac{3}{16}'' = 1'-0''$

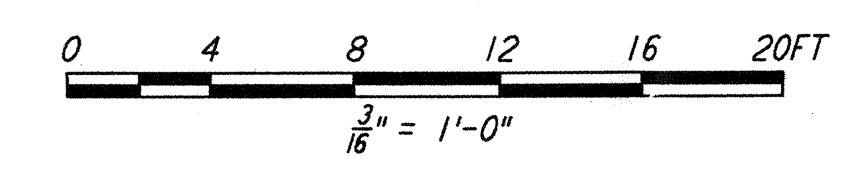


**ELEVATION AT COLUMN LINES 2, 3 & 4**  
 $\frac{3}{16}'' = 1'-0''$



**ELEVATION AT COLUMN LINE 5**  
 $\frac{3}{16}'' = 1'-0''$

- NOTES:**
- FOR GENERAL NOTES, ABBREVIATIONS AND SYMBOLS SEE DRAWING LA-S-001.
  - FOR CHANNEL, GIRT AND EAVE STRUT CONNECTION DETAILS SEE DRAWING LA-S-005.
  - FOR W BEAM TO COLUMN WEB/FLANGE CONNECTIONS, SEE DETAILS (3) LA-S-007 & (4) LA-S-007 UNLESS OTHERWISE NOTED.
  - FOR BASE ANGLE (LSX3) CONNECTIONS, SEE SECTION (A) LA-S-003.
  - FOR LOCATION OF INTERIOR ROOLED-UP DOORS SEE DETAIL (6) LA-S-007.
  - TRIM VERTICAL BRACING W/7 STEM AS REQUIRED (1/2" X 12" APPROX) AT GIRT LOCATION TO CLEAR GIRTS. PROVIDE 2/3 TO 1 TRANSITION AT ENDS OF CUT.



**LIGO-D960923-01-O**

DRAWING NO.	DESCRIPTION

NO.	DATE	BY	CHKD	ENGR	PROJ	DESCRIPTION
2	08-07-98	WA	GM	GM	YWW	ISSUED FOR AS-BUILT
1	2-28-97	RM	AB	BP		ADDED DET REF AT ELEV LN 1

ISSUED FOR CONSTRUCTION  
 DRAWN MCS 11-15-96  
 CHECKED DDM 11-15-96  
 ENGINEER BP 11-15-96  
 PROJ TDM 11-15-96

**AS-BUILT DRAWINGS**

**PARSONS**

100 WEST WALNUT STREET  
 PASADENA, CALIFORNIA

**LIGO**

CALIFORNIA INSTITUTE OF TECHNOLOGY  
 MASSACHUSETTS INSTITUTE OF TECHNOLOGY

LASER INTERFEROMETER  
 GRAVITATIONAL-WAVE OBSERVATORY  
 SITE NO. 2 - LIVINGSTON, LOUISIANA

STRUCTURAL  
 CORNER STATION  
 LVEA FRAMING ELEVATIONS  
 SHEET 1

SCALE: AS NOTED  
 CONTRACT NUMBER: PPI50969  
 PROJECT NUMBER: 8094

SHEET NUMBER: **LA-S-107**