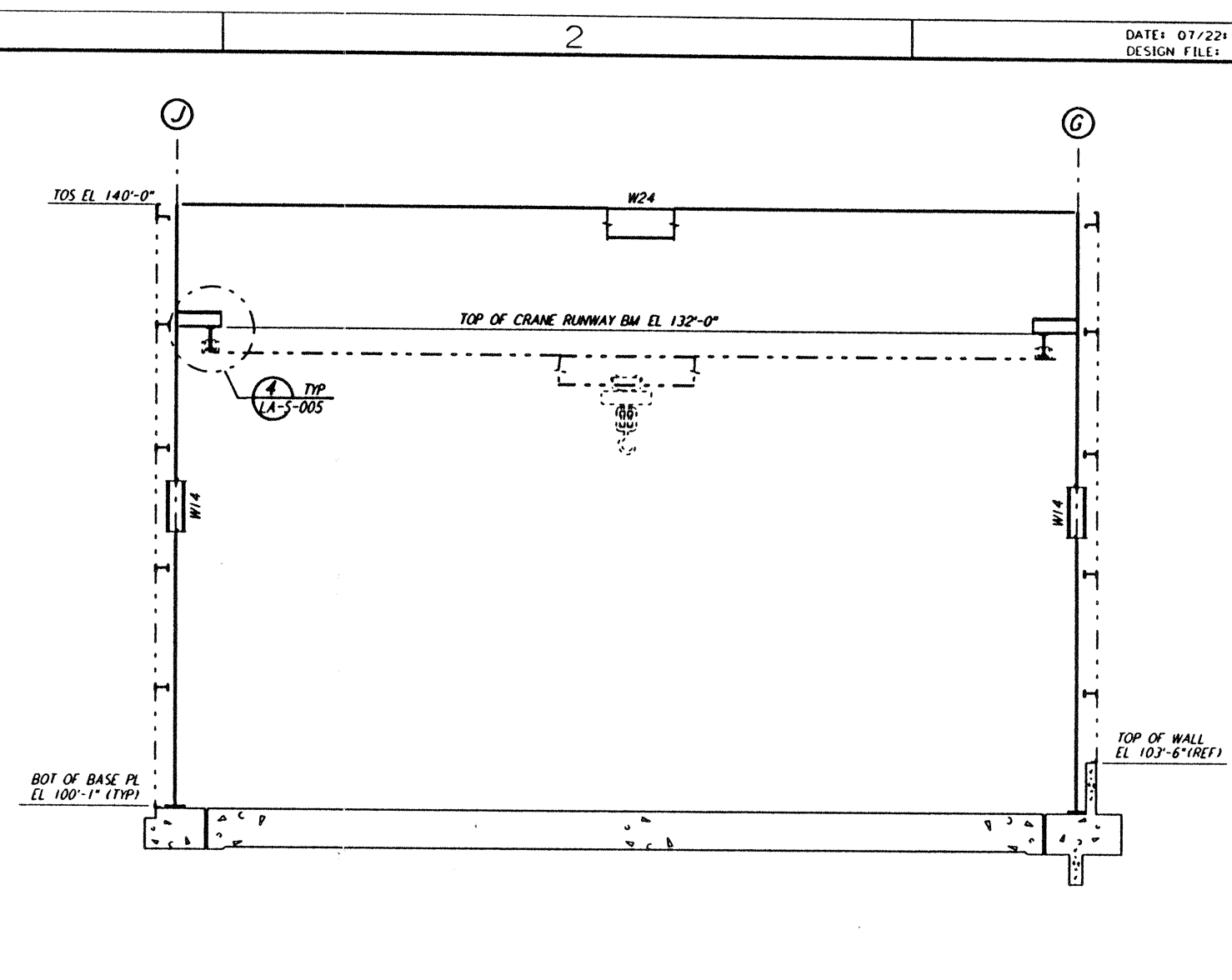
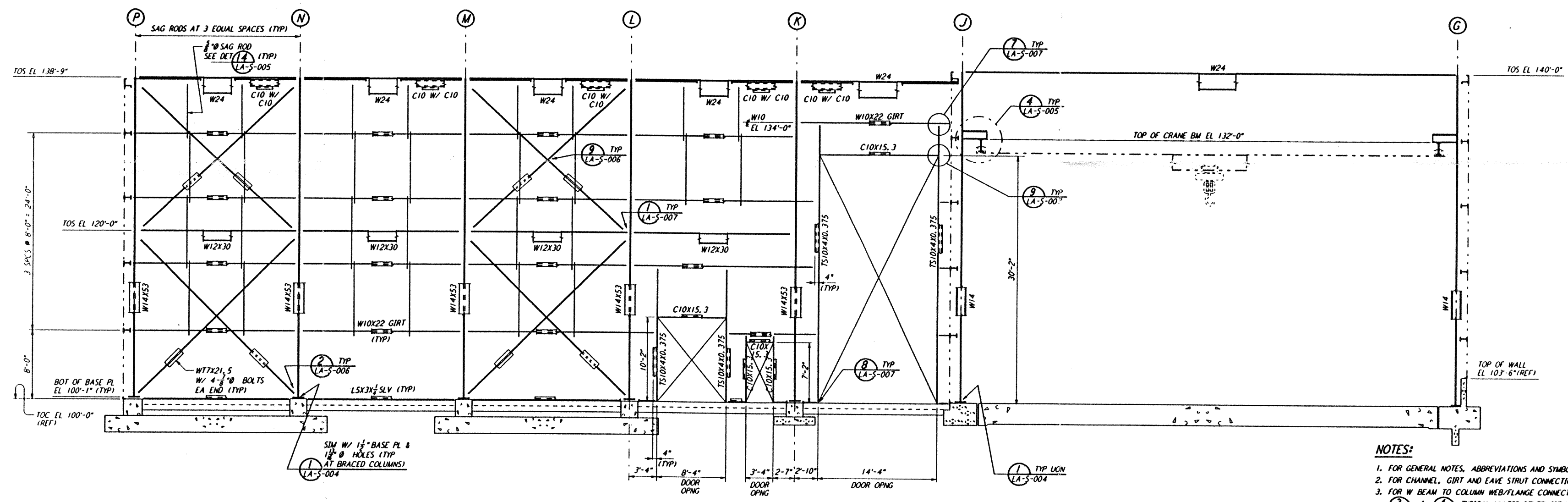


ELEVATION AT COLUMN LINE 1
 $\frac{3}{8}'' = 1'-0''$

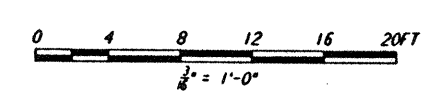


ELEVATION AT COLUMN LINES 2, 3 & 4
 $\frac{3}{8}'' = 1'-0''$



ELEVATION AT COLUMN LINE 5
 $\frac{3}{8}'' = 1'-0''$

- NOTES:**
- FOR GENERAL NOTES, ABBREVIATIONS AND SYMBOLS SEE DRAWING LA-S-001.
 - FOR CHANNEL, GIRT AND EAVE STRUT CONNECTION DETAILS SEE DRAWING LA-S-005.
 - FOR W BEAM TO COLUMN WEB/FLANGE CONNECTIONS, SEE DETAILS (A) LA-S-004 & (B) LA-S-007 TYPICAL UNLESS OTHERWISE NOTED.
 - FOR BASE ANGLE (LSX3) CONNECTIONS, SEE SECTION (A) LA-S-003
 - FOR LOCATION OF INTERIOR ROOLED-UP DOORS SEE DETAIL (B) LA-S-007



NO.	DATE	BY	CHK'D	ENGR	PROJ	DESCRIPTION
C	7-24-96	MCS				ISSUED FOR BID
B	6-14-96	MCS				FINAL DESIGN REVIEW
A	10-31-95					PRELIMINARY DESIGN REVIEW

DRAWN	MCS
CHECKED	
ENGINEER	
PROJ	

PARSONS
 100 WEST WALNUT STREET
 PASADENA, CALIFORNIA

LIGO
 CALIFORNIA INSTITUTE OF TECHNOLOGY
 MASSACHUSETTS INSTITUTE OF TECHNOLOGY

LASER INTERFEROMETER
 GRAVITATIONAL-WAVE OBSERVATORY
 SITE NO. 2 - LIVINGSTON, LOUISIANA

TITLE	SCALE	CONTRACT NUMBER	PROJECT NUMBER
STRUCTURAL CORNER STATION LVEA FRAMING ELEVATIONS SHEET 1	AS NOTED	PP150969	8094

LA-S-107

Mon Jul 22 17:29:05 1996 S3-V18B2 J:\PLOTS\SEQUENCES\18B2\ST107.PRF
 This document and the design it covers are the property of PARSONS. They are loaned only with the borrower's expressed written agreement that they will not be reproduced, copied, loaned, exhibited, or used in any other way, except by written consent from PARSONS to the borrower.