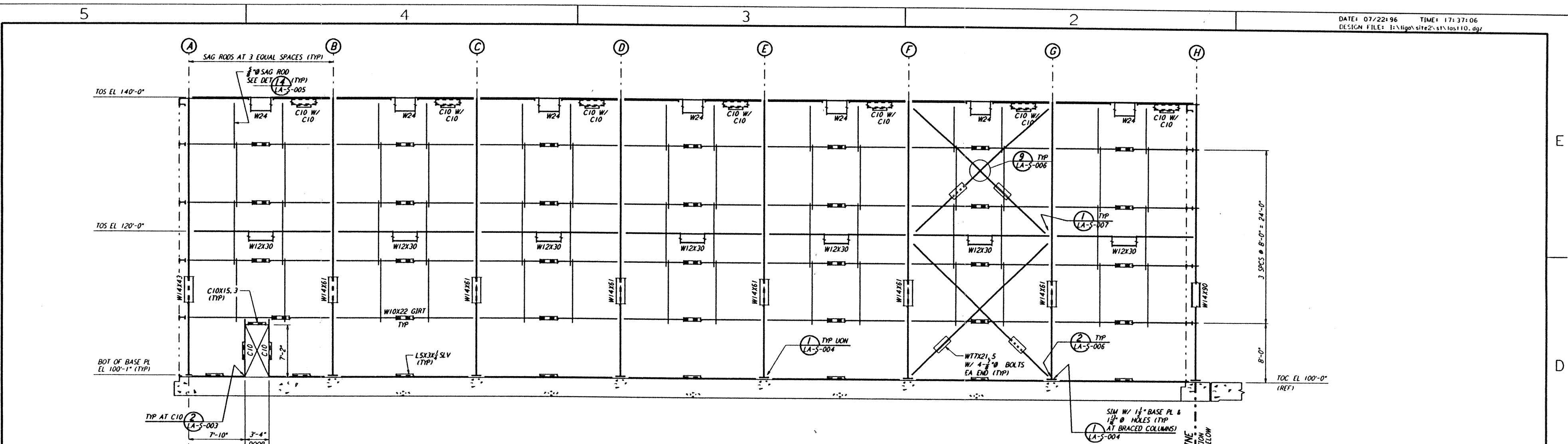
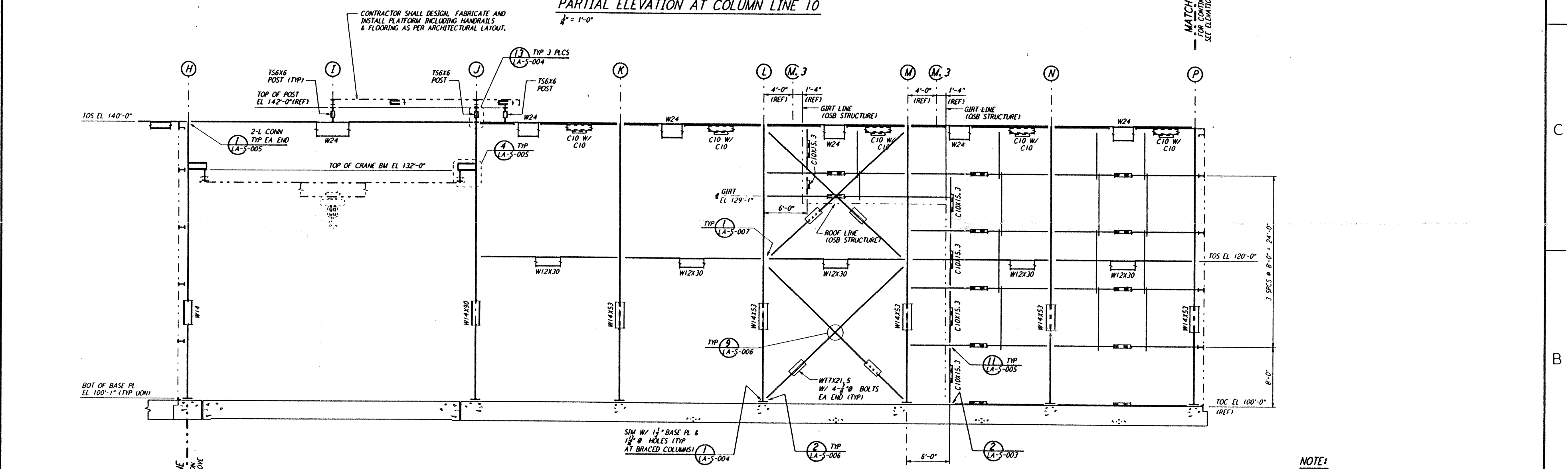


Mon Jul 22 17:36:24 1996 S3-V18B2 J:\PLOTS\QUEUES\18B2\ST110.PRF

This document and the design it covers are the property of PARSONS. They are loaned only with the borrower's expressed written agreement that they will not be reproduced, copied, loaned, exhibited, or used in any other way, except by written consent from PARSONS to the borrower.

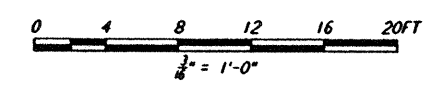


PARTIAL ELEVATION AT COLUMN LINE 10
 $\frac{1}{2}'' = 1'-0''$



PARTIAL ELEVATION AT COLUMN LINE 10
 $\frac{1}{2}'' = 1'-0''$

NOTE:
 1. FOR NOTES SEE DRAWING LA-S-107.



NO.	DATE	BY	CHKD	ENGR	PROJ	DESCRIPTION
C	7-24-96	MCS	BP	BP	TDM	ISSUED FOR BID
B	6-14-96	MCS	DDM	BP	TDM	FINAL DESIGN REVIEW
A	10-31-95				TDM	PRELIMINARY DESIGN REVIEW

DRAWN	MCS
CHECKED	
ENGINEER	
PROJ	

PARSONS
 100 WEST WALNUT STREET
 PASADENA, CALIFORNIA

LIGO
 CALIFORNIA INSTITUTE OF TECHNOLOGY
 MASSACHUSETTS INSTITUTE OF TECHNOLOGY

LASER INTERFEROMETER
 GRAVITATIONAL-WAVE OBSERVATORY
 SITE NO. 2 - LIVINGSTON, LOUISIANA

TITLE	SCALE	CONTRACT NUMBER	PROJECT NUMBER
STRUCTURAL CORNER STATION LVEA FRAMING ELEVATIONS SHEET 4	AS NOTED	PP150969	8094
SHEET NUMBER		REVISION	
LA-S-110			