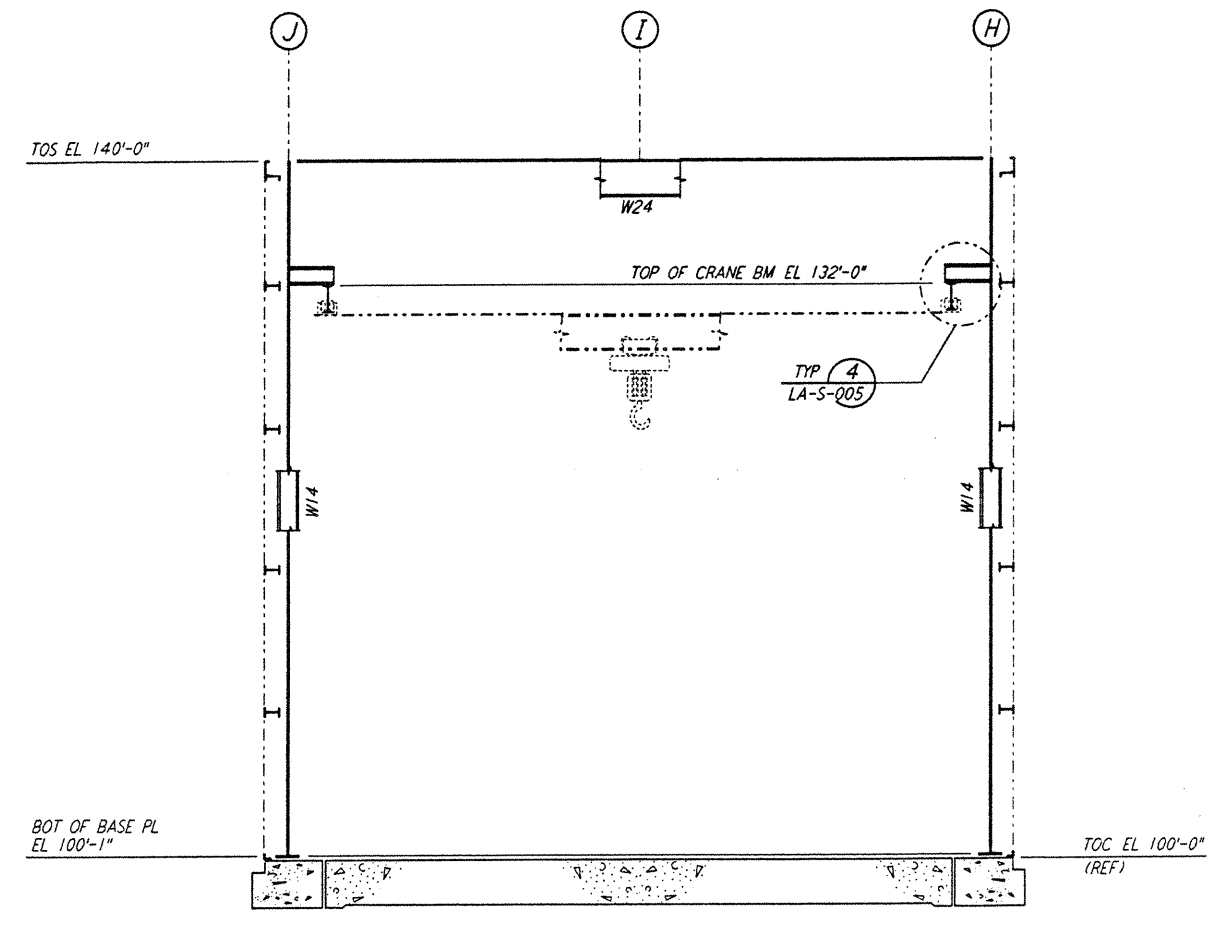


5

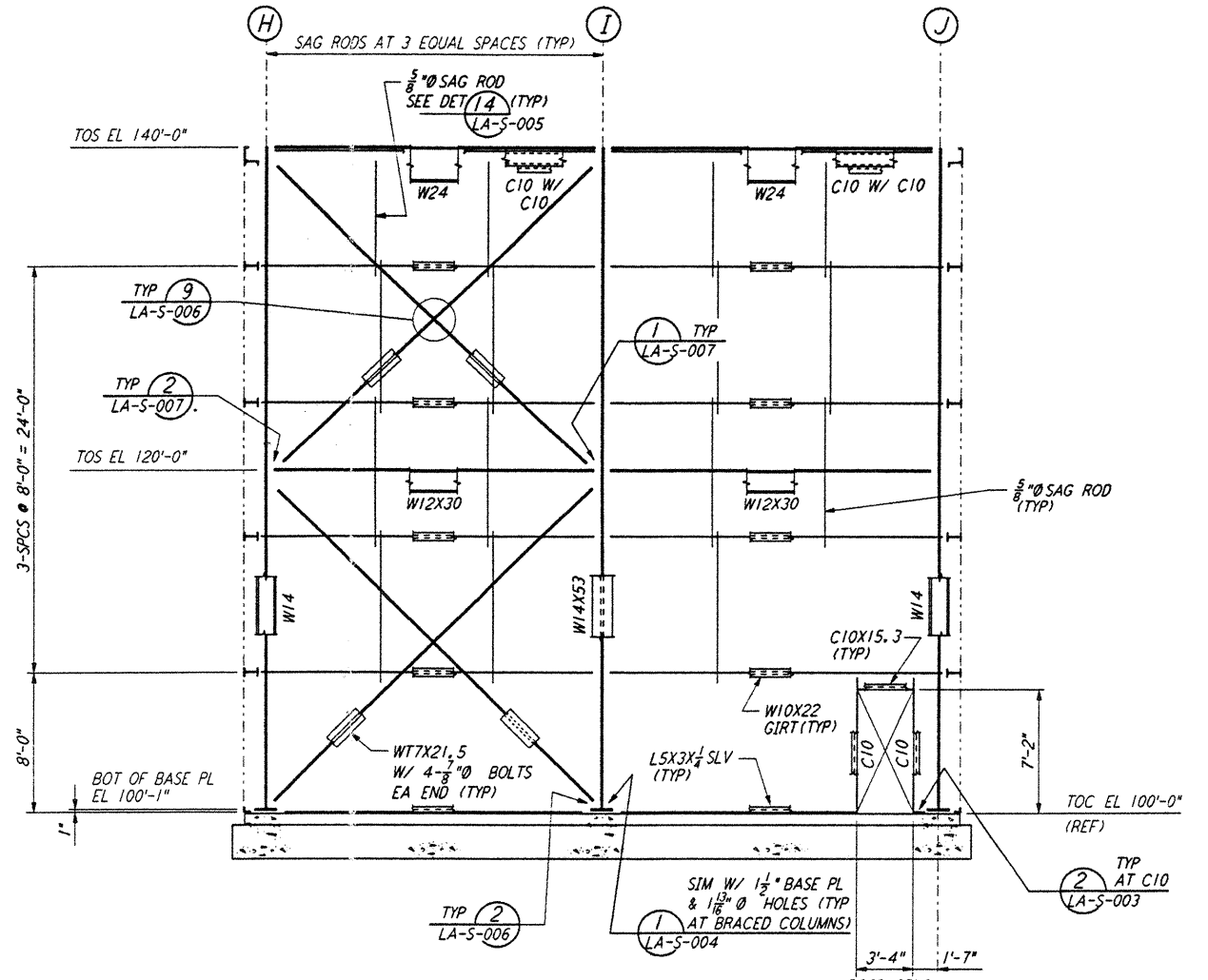
4

3

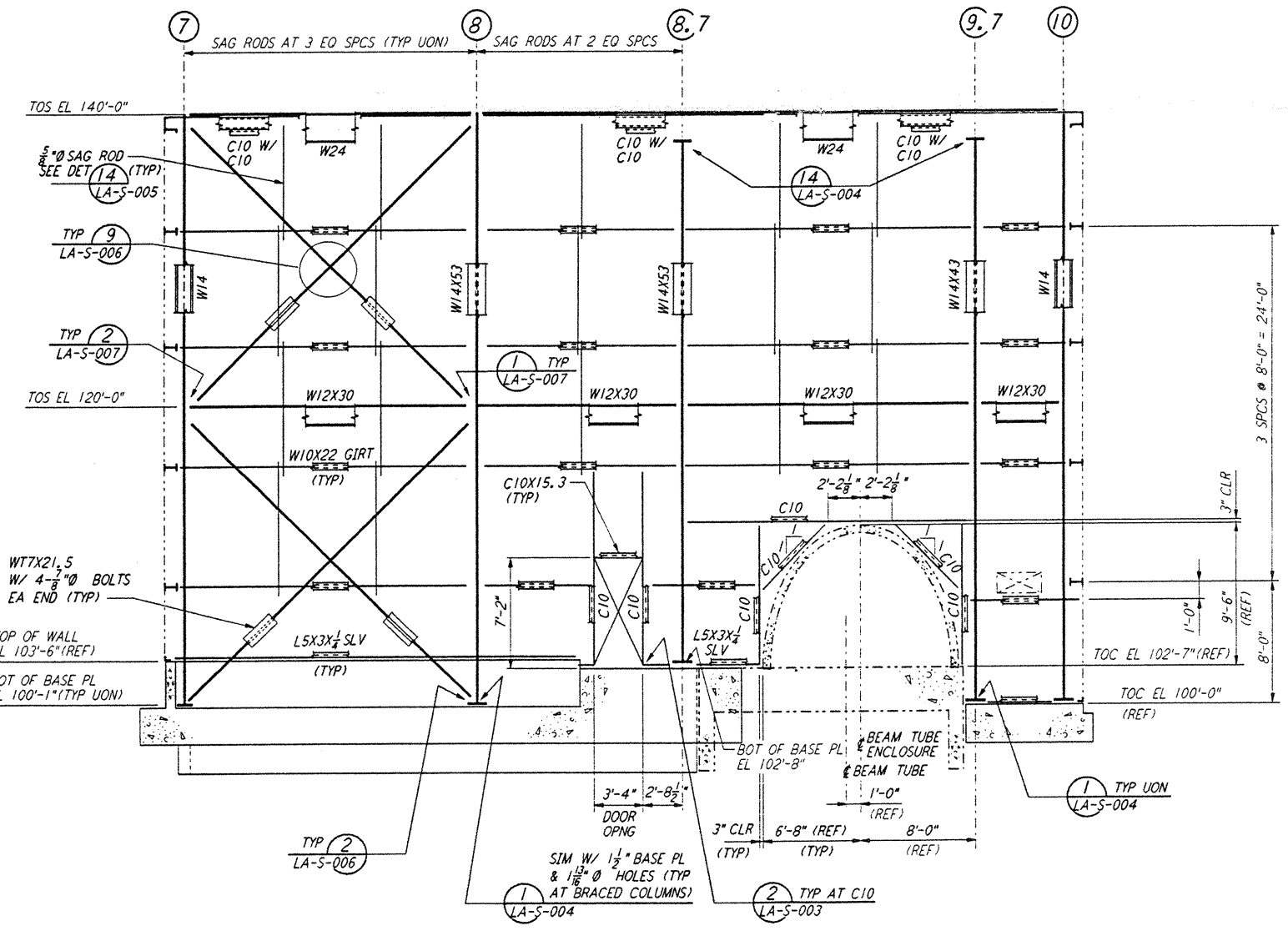
2



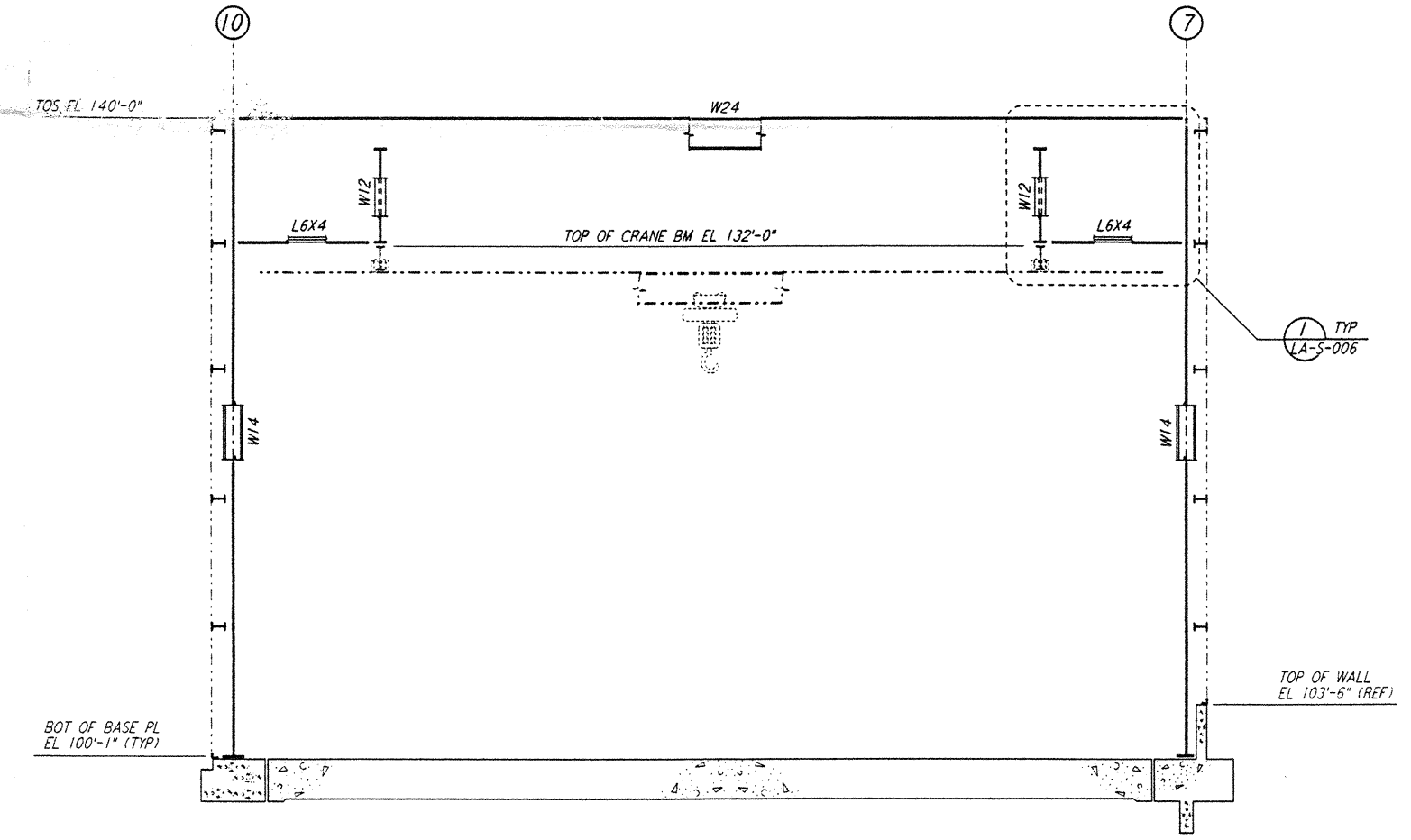
ELEVATION AT COLUMN LINES 11, 12, 13, 14 & 15
 $\frac{3}{8}'' = 1'-0''$



ELEVATION AT COLUMN LINE 16
 $\frac{3}{8}'' = 1'-0''$

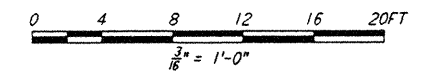


ELEVATION AT COLUMN LINE A
 $\frac{3}{8}'' = 1'-0''$



ELEVATION AT COLUMN LINES B, C, D, E & F
 $\frac{3}{8}'' = 1'-0''$

NOTE:
 1. FOR NOTES SEE DRAWING LA-S-107.



This document and the design it covers are the property of PARSONS. They are loaned only with the borrower's expressed written agreement that they will not be reproduced, copied, loaned, exhibited, or used in any other way, except by written consent from PARSONS to the borrower.

This document and the design it covers are the property of PARSONS. They are loaned only with the borrower's expressed written agreement that they will not be reproduced, copied, loaned, exhibited, or used in any other way, except by written consent from PARSONS to the borrower.

NO.	DATE	BY	CHKD	ENGR	PROJ	DESCRIPTION
B	6-14-96	MCS	EBL	TK	ADM	FINAL DESIGN REVIEW
A	10-31-95				TOM	PRELIMINARY DESIGN REVIEW

DRAWN	MCS
CHECKED	
ENGINEER	
PROJ	

PARSONS
 100 WEST WALNUT STREET
 PASADENA, CALIFORNIA

LIGO
 CALIFORNIA INSTITUTE OF TECHNOLOGY
 MASSACHUSETTS INSTITUTE OF TECHNOLOGY

LASER INTERFEROMETER
 GRAVITATIONAL-WAVE OBSERVATORY
 SITE NO. 2 - LIVINGSTON, LOUISIANA

TITLE: STRUCTURAL CORNER STATION LVEA FRAMING ELEVATIONS SHEET 5
 SCALE: AS NOTED
 CONTRACT NUMBER: PPI50969
 PROJECT NUMBER: 8094
 SHEET NUMBER: LA-S-111

5

4

3

2

LIGO-D960927-B-O

LIGOLAF.BOR