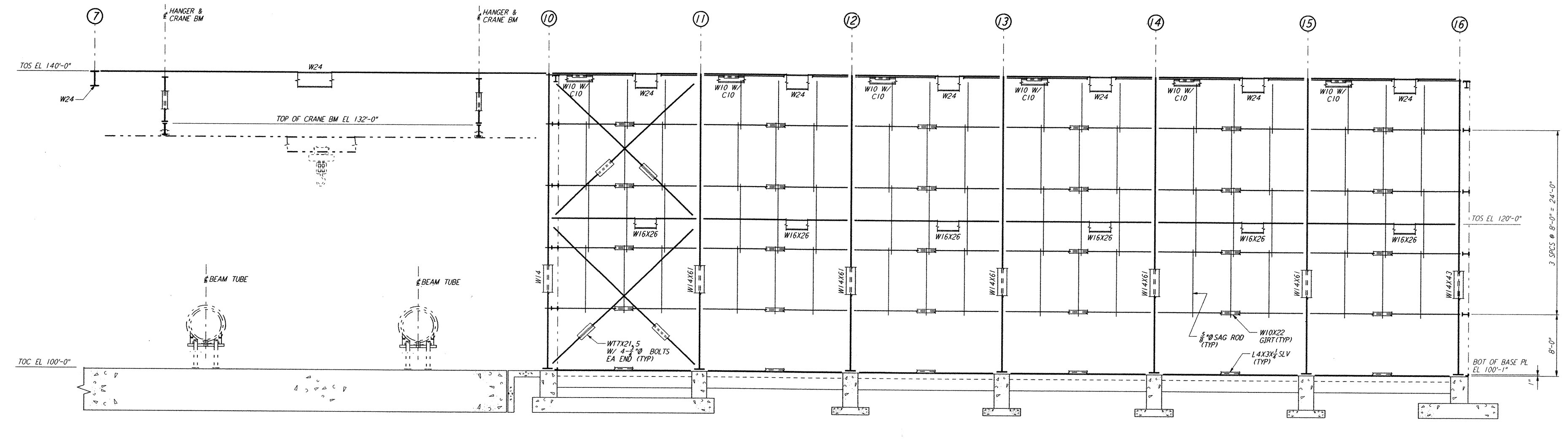
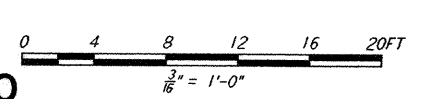


PARTIAL ELEVATION AT COLUMN LINE G
 $\frac{3}{8}'' = 1'-0''$



PARTIAL ELEVATION AT COLUMN LINE H
 $\frac{3}{8}'' = 1'-0''$



LIGO-D960929-A-O

REVISION	NO.	DATE	APRD BY	DESCRIPTION OF REVISION
9				
8				
7				
6				
5				
4				
3				
2				
1				

ISSUE	NO.	DATE	APRD BY	DESCRIPTION
J				
H				
G				
F				
E				
D				
C				
B				
A	10-31-95	TDM		PRELIMINARY DESIGN REVIEW

DATE	10-31-95
DRAWN	MCS
CHECKED	
ENGINEER	
PROJ MGR	

PARSONS
 100 WEST WALNUT STREET
 PASADENA, CALIFORNIA

LIGO
 CALIFORNIA INSTITUTE OF TECHNOLOGY
 MASSACHUSETTS INSTITUTE OF TECHNOLOGY

LASER INTERFEROMETER
 GRAVITATIONAL-WAVE OBSERVATORY
 SITE NO. 2 - LIVINGSTON, LOUISIANA

CORNER STATION (LVEA) AS NOTED
 FRAMING ELEVATIONS SHEET 6

SCALE: CONTRACT NUMBER: PPI50969
 PROJECT NUMBER: 8094

LA-S-113

Mon Oct 30 19:23:13 1995 s3-v18b2 J:\PLOTS\QUEUES\18B2\ST113.PRF
 LIGOLAF.BDR