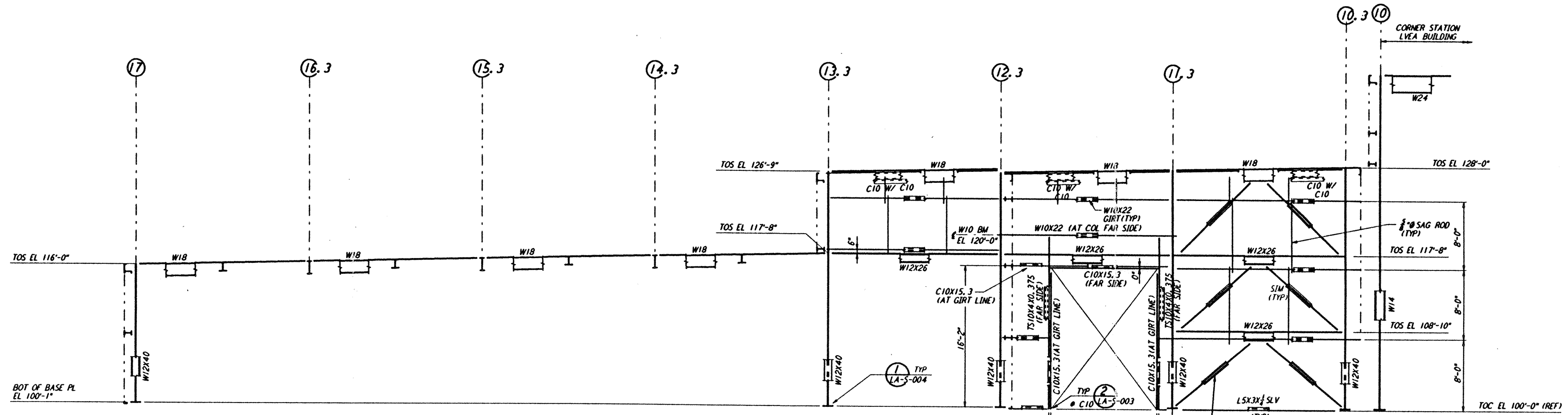
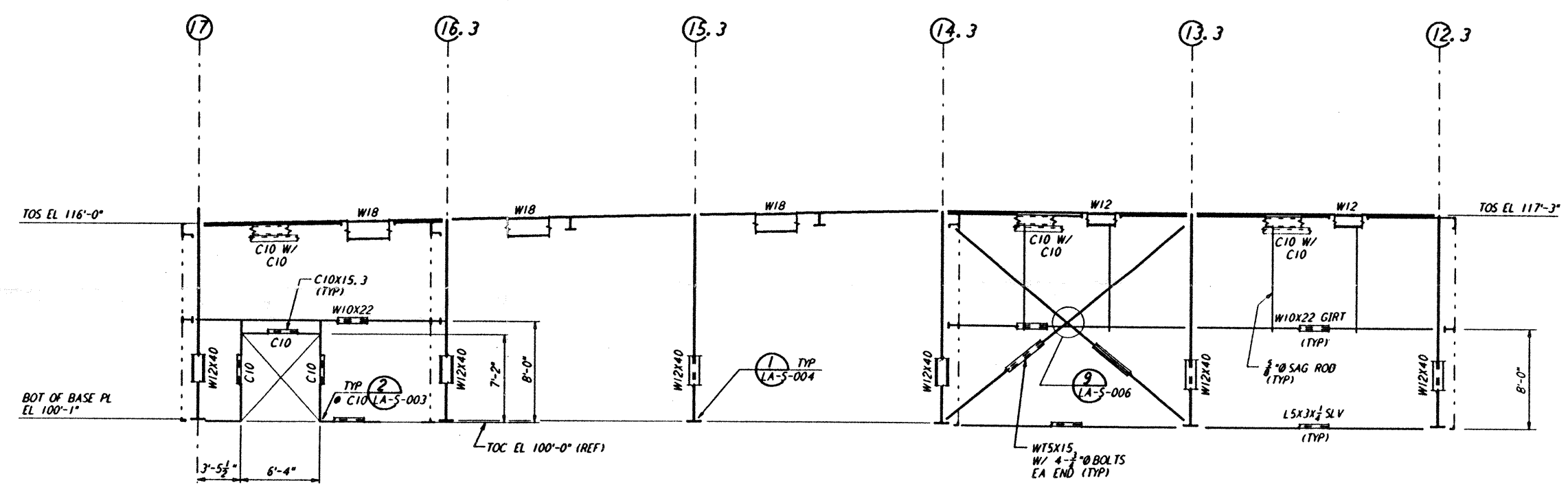


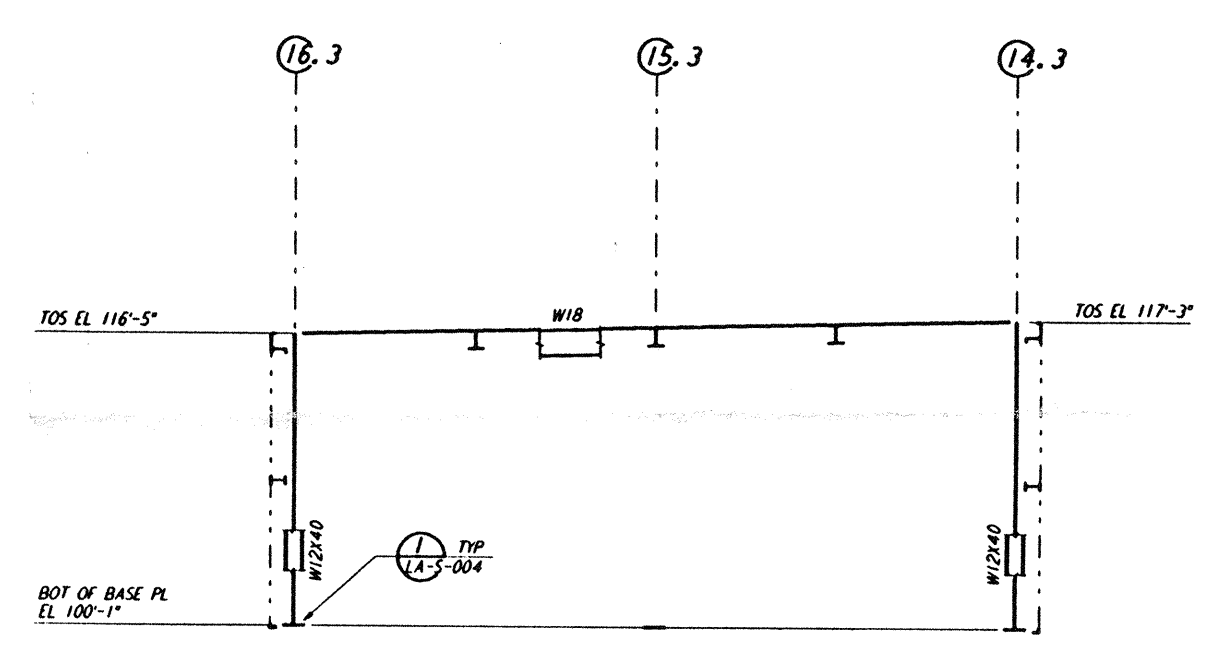
Mon Jul 22 17:56:10 1996 S3-V18B2 J:\PLOTS\QUEUES\18B2\ST118.PRF



FRAMING ELEVATION AT COLUMN LINE M.3
 1/4" = 1'-0"

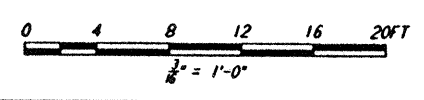


FRAMING ELEVATION AT COLUMN LINE N.3
 1/4" = 1'-0"



FRAMING ELEVATION AT COLUMN LINE P.3, R, S & T
 1/4" = 1'-0"

- NOTES:
- FOR GENERAL NOTES, ABBREVIATIONS AND SYMBOLS SEE DRAWING LA-S-001.
 - FOR CHANNEL, GIRT AND EAVE STRUT CONNECTION DETAILS SEE DRAWING LA-S-005.
 - FOR W BEAM TO COLUMN WEB/FLANGE CONNECTIONS, SEE DETAILS (1) & (2) TYPICAL UNLESS OTHERWISE NOTED.
 - FOR BASE ANGLE (LSX3) CONNECTIONS, SEE SECTION (A) LA-S-003.
 - FOR VERT BRGC CONNECTIONS SEE (3) LA-S-006, (4) LA-S-006, (5) LA-S-007, (6) LA-S-007 TYP UNL.



NO.	DATE	BY	CHK'D	ENGR	PROJ	DESCRIPTION
C	7-24-96	MCS	DDM	BP	TDW	ISSUED FOR BID
B	6-14-96	MCS	DDM	BP	TDW	FINAL DESIGN REVIEW
A	10-31-95				TDW	PRELIMINARY DESIGN REVIEW

DRAWN	MCS
CHECKED	
ENGINEER	
PROJ	

PARSONS
 100 WEST WALNUT STREET
 PASADENA, CALIFORNIA

LIGO
 CALIFORNIA INSTITUTE OF TECHNOLOGY
 MASSACHUSETTS INSTITUTE OF TECHNOLOGY

LASER INTERFEROMETER
 GRAVITATIONAL-WAVE OBSERVATORY
 SITE NO. 2 - LIVINGSTON, LOUISIANA

STRUCTURAL
 CORNER STATION
 OSB FRAMING ELEVATIONS
 SHEET 2

SCALE: AS NOTED
 CONTRACT NUMBER: PP150969
 PROJECT NUMBER: 8094

LA-S-118

LIGO-D960934-B-0

LIGOLAF.BDR

This document and the design it covers are the property of PARSONS. They are loaned only with the borrower's expressed written agreement that they will not be reproduced, copied, loaned, exhibited, or used in any other way, except by written consent from PARSONS to the borrower.