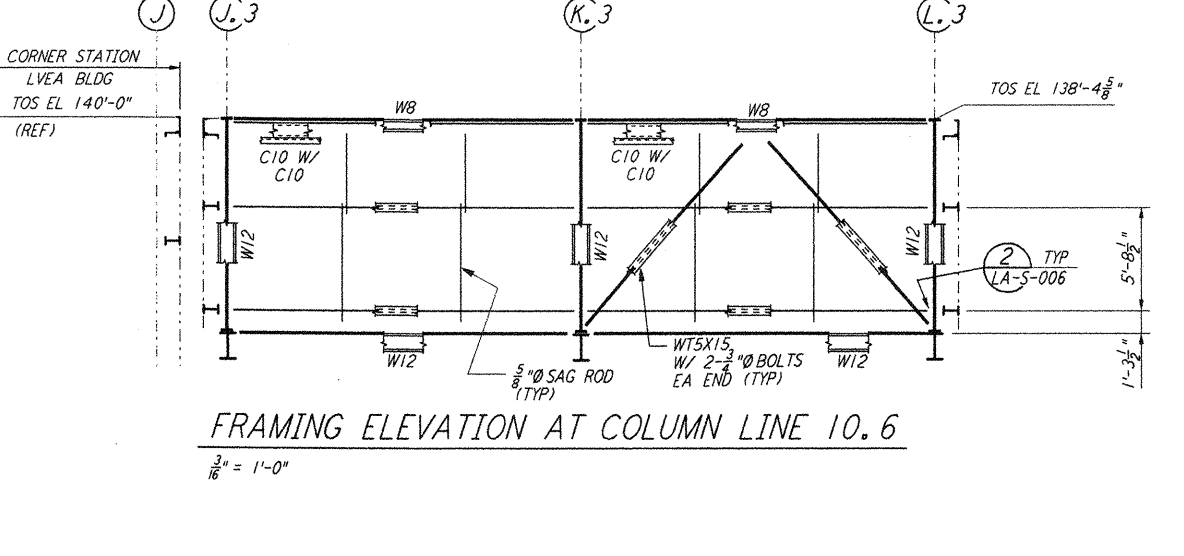
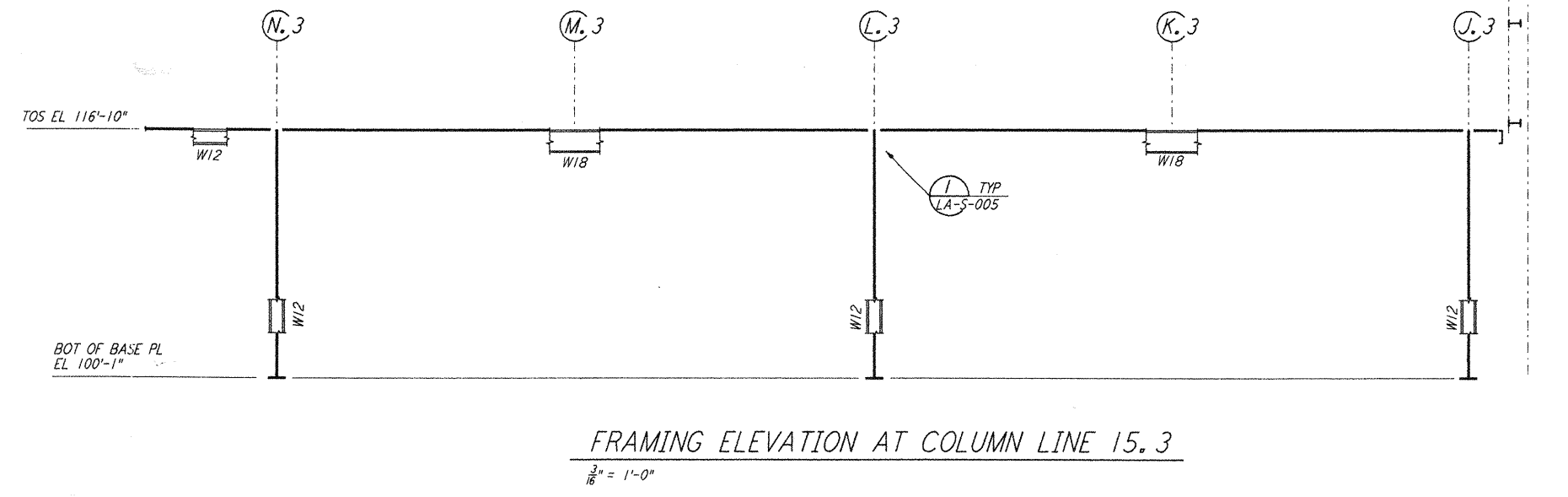
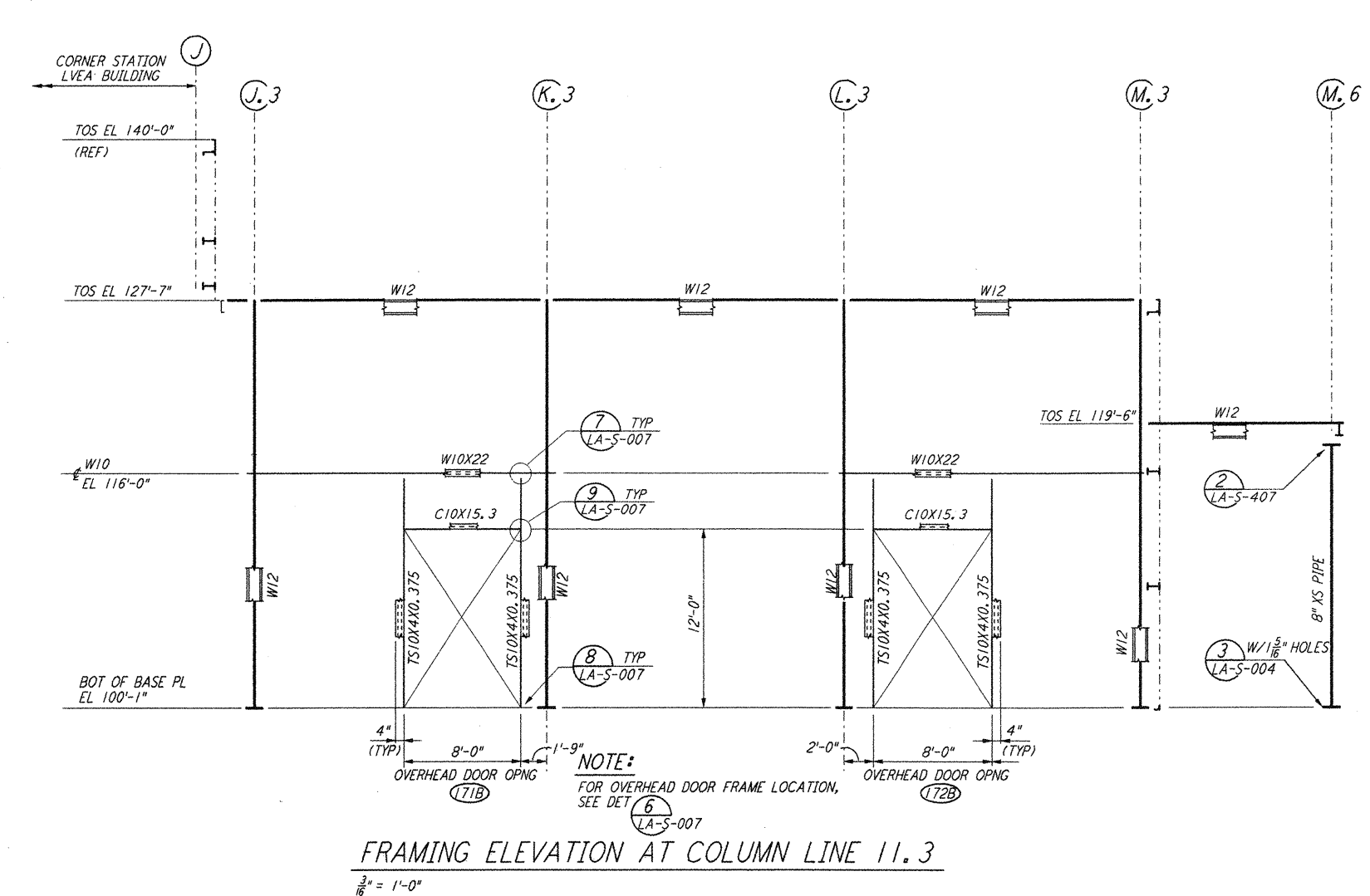
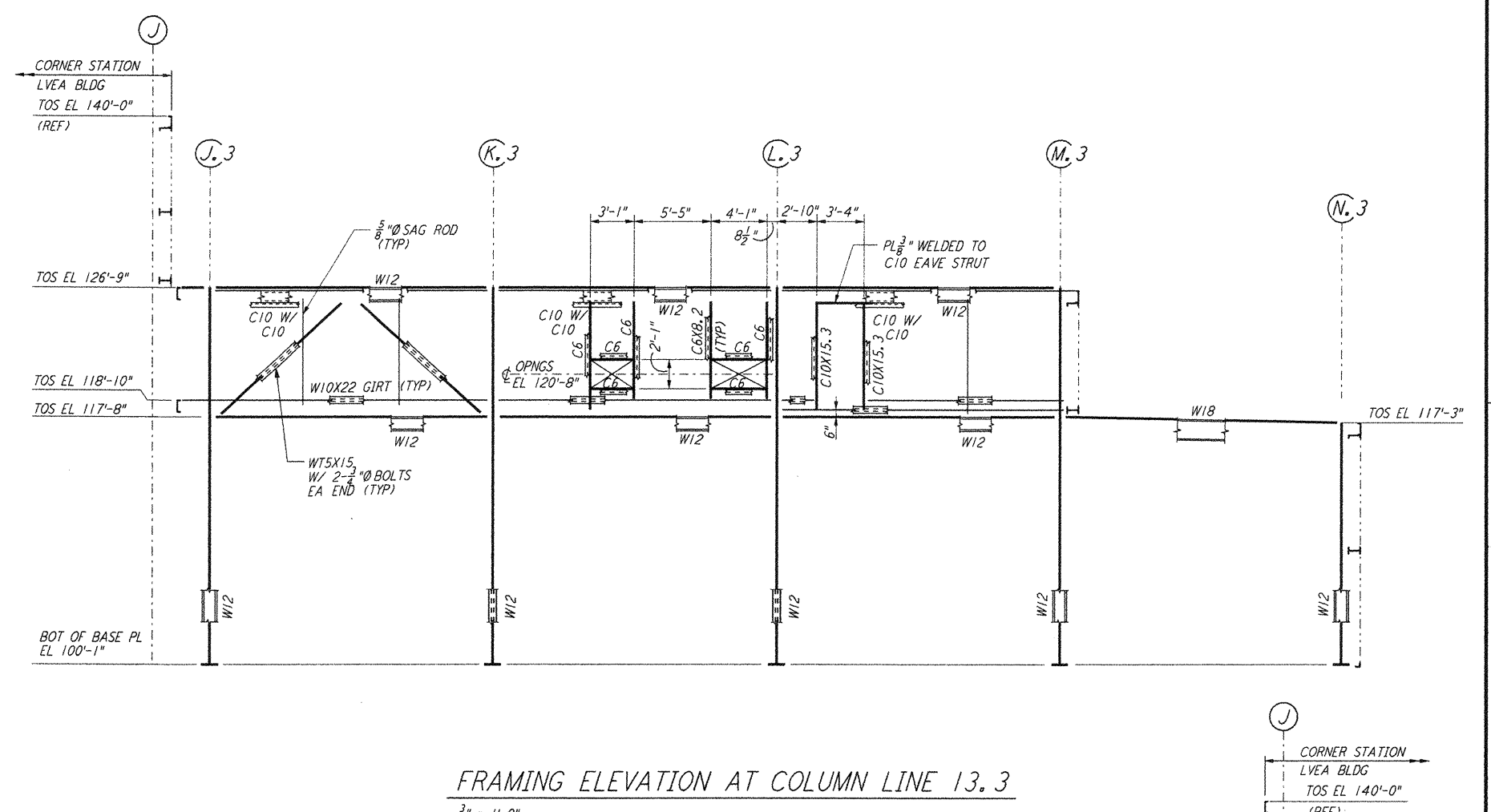
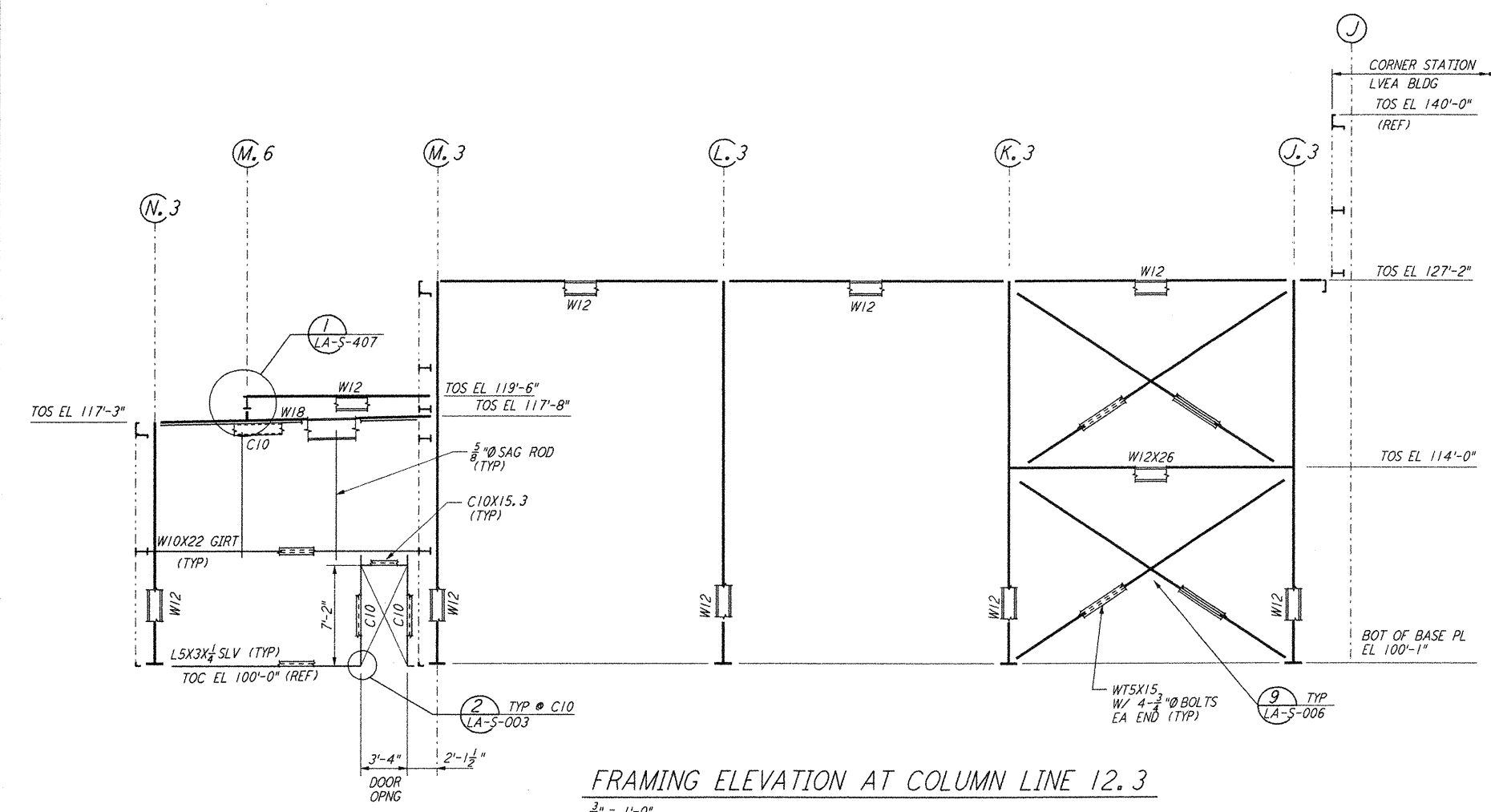
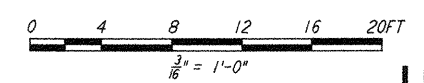


This document and the design it covers are the property of PARSONS. They are loaned only with the borrower's expressed written agreement that they will not be reproduced, copied, loaned, exhibited, or used in any other way, except by written consent from PARSONS to the borrower.



- NOTES:**
- FOR GENERAL NOTES, ABBREVIATIONS AND SYMBOLS SEE DRAWING LA-S-001.
 - FOR CHANNEL, GIRT AND EAVE STRUT CONNECTION DETAILS SEE DRAWING LA-S-005.
 - FOR W BEAM TO COLUMN WEB/FLANGE CONNECTIONS, SEE DETAILS (6) & (4) TYPICAL UNLESS OTHERWISE NOTED.
 - FOR BASE ANGLE (LSX3) CONNECTIONS, SEE SECTION (A) LA-S-003.
 - FOR VERT BRGC CONNECTIONS SEE (2) LA-S-006 (8) LA-S-006 (1) LA-S-007 (2) LA-S-007 TYP UON.



NO.	DATE	BY	CHKD	ENGR	PROJ	DESCRIPTION
2	08-07-98	WA	BP	BP	WW	ISSUED FOR AS-BUILT
1	2-28-97	RM	AB	BP		REV GIRT EL AT ELEV LN 12.3, 13.3 & 10.6

NO.	DATE	BY	CHKD	ENGR	PROJ	DESCRIPTION
1	11-15-96	MCS				ISSUED FOR CONSTRUCTION
2	11-15-96	DDM				CHECKED
3	11-15-96	BP				ENGINEER
4	11-15-96	TDM				PROJ

PARSONS
 100 WEST WALNUT STREET
 PASADENA, CALIFORNIA

LIGO
 CALIFORNIA INSTITUTE OF TECHNOLOGY
 MASSACHUSETTS INSTITUTE OF TECHNOLOGY

LIGO-D960936-02-0
 LASER INTERFEROMETER
 GRAVITATIONAL-WAVE OBSERVATORY
 SITE NO. 2 - LIVINGSTON, LOUISIANA

SCALE: AS NOTED
 CONTRACT NUMBER: PP150969
 PROJECT NUMBER: 8094

SHEET NUMBER: LA-S-120
 REVISIONS: (Symbol)

Thu Aug 13 15:06:37 1998 C:\PLOT\Q\UE\33-13682\20CF 52085 K:\V2682\stf120.prf