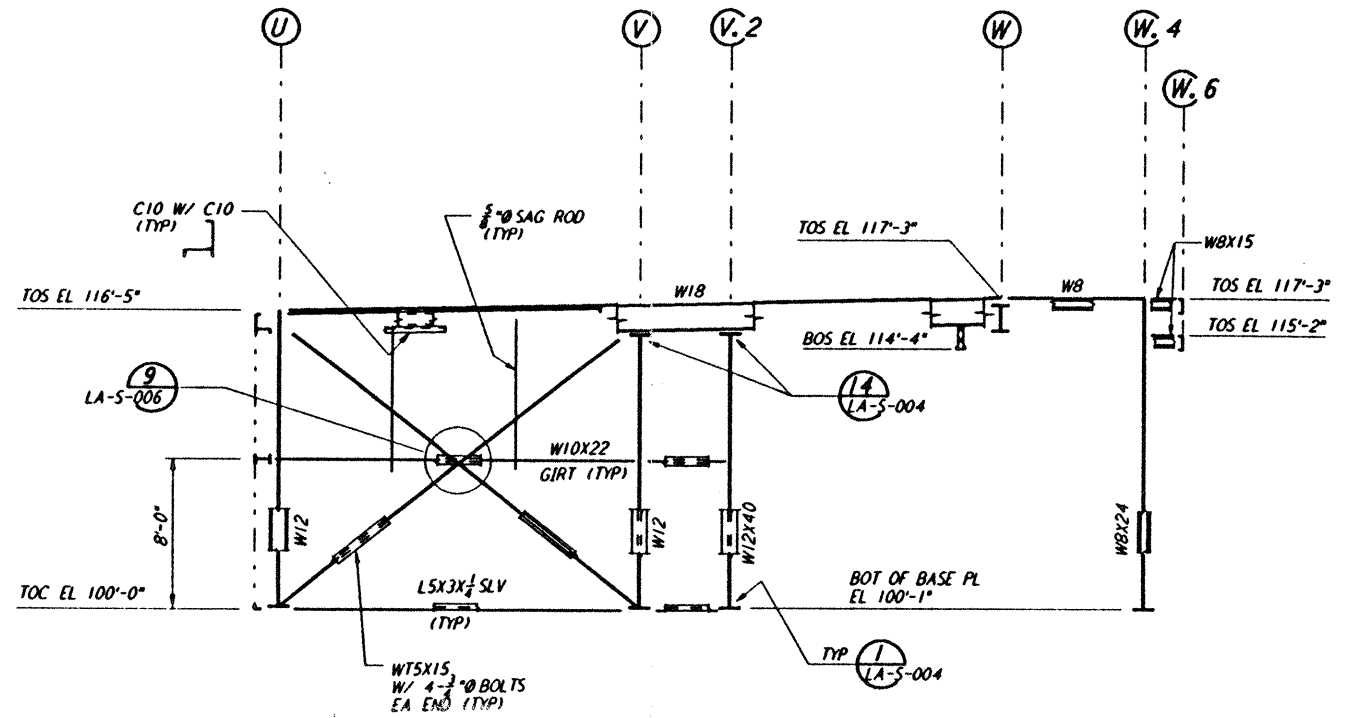
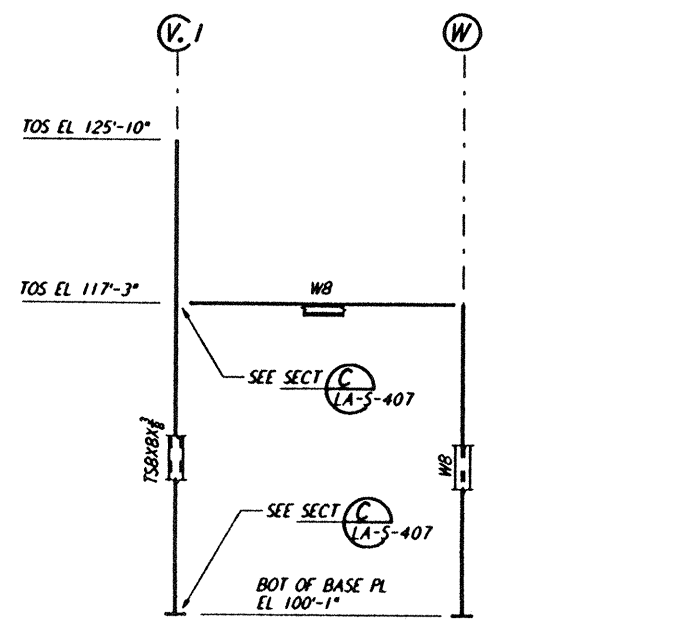


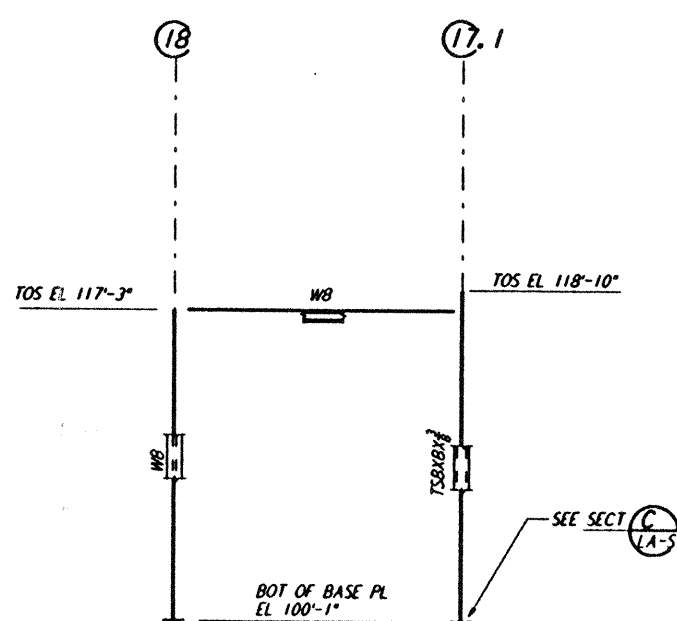
FRAMING ELEVATION AT COLUMN LINE 17
 1/2" = 1'-0"



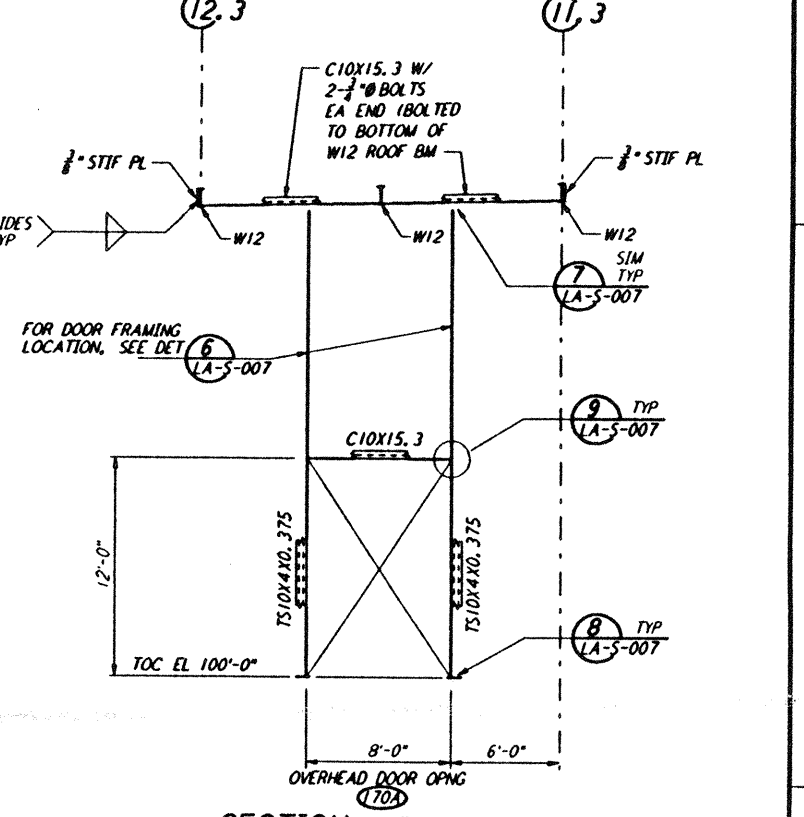
FRAMING ELEVATION AT COLUMN LINE 18
 1/2" = 1'-0"



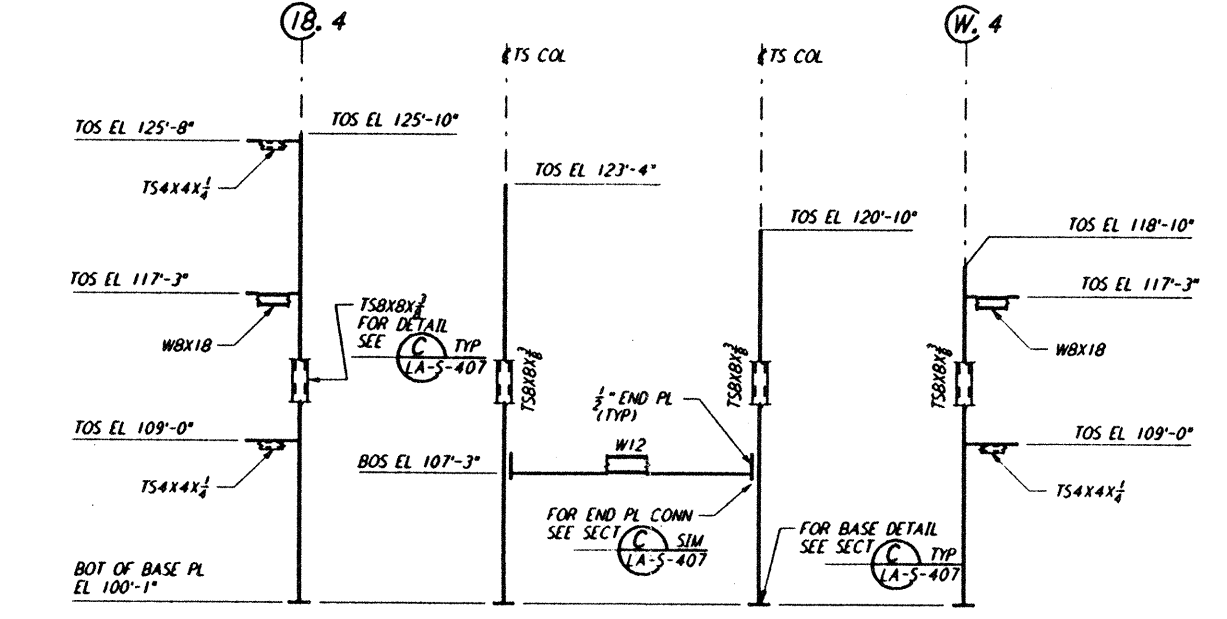
FRAMING ELEVATION AT COLUMN LINE 18.4
 1/2" = 1'-0"



FRAMING ELEVATION AT COLUMN LINE W. 4
 1/2" = 1'-0"

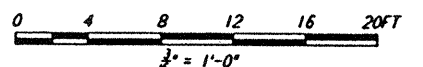


SECTION A REF
 1/2" = 1'-0" LA-5-123 LA-5-116



DEVELOPED FRAMING ELEVATION
 1/2" = 1'-0" REF LA-5-123 LA-5-116

- NOTES:
- FOR GENERAL NOTES, ABBREVIATIONS AND SYMBOLS SEE DRAWING LA-5-001.
 - FOR CHANNEL, GIRT AND EAVE STRUT CONNECTION DETAILS SEE DRAWING LA-5-005.
 - FOR W BEAM TO COLUMN WEB/FLANGE CONNECTIONS, SEE DETAILS (6) LA-5-004 & (4) LA-5-007 TYPICAL UNLESS OTHERWISE NOTED.
 - FOR BASE ANGLE (LSX3) CONNECTIONS, SEE SECTION (A) LA-5-003.
 - FOR VERT BRGC CONNECTIONS SEE (2) LA-5-006 (8) LA-5-006 (1) LA-5-007 (2) LA-5-007 TYP UOM.



NO.	DATE	BY	CHKD	ENGR	PROJ	DESCRIPTION
C	7-24-96	MCS	DM	BP	SDM	ISSUED FOR BID
B	6-14-96	MCS	DM	BP	TDM	FINAL DESIGN REVIEW
A	10-31-95	MCS	DM	BP	TDM	PRELIMINARY DESIGN REVIEW

DRAWN	MCS
CHECKED	
ENGINEER	
PROJ	

PARSONS
 100 WEST WALNUT STREET
 PASADENA, CALIFORNIA

LIGO
 CALIFORNIA INSTITUTE OF TECHNOLOGY
 MASSACHUSETTS INSTITUTE OF TECHNOLOGY

LASER INTERFEROMETER
 GRAVITATIONAL-WAVE OBSERVATORY
 SITE NO. 2 - LIVINGSTON, LOUISIANA

STRUCTURAL
 CORNER STATION
 OSB FRAMING ELEVATIONS
 SHEET 7

AS NOTED PP150969 8094
LA-S-123

Mon Jul 22 18:07:40 1996 S3-V18B2 J:\PLOTS\NOQUES\18B2\ST123.PRF
 This document and the design it covers are the property of PARSONS. They are loaned only with the borrower's expressed written agreement that they will not be reproduced, copied, loaned, exhibited, or used in any other way, except by written consent from PARSONS to the borrower.