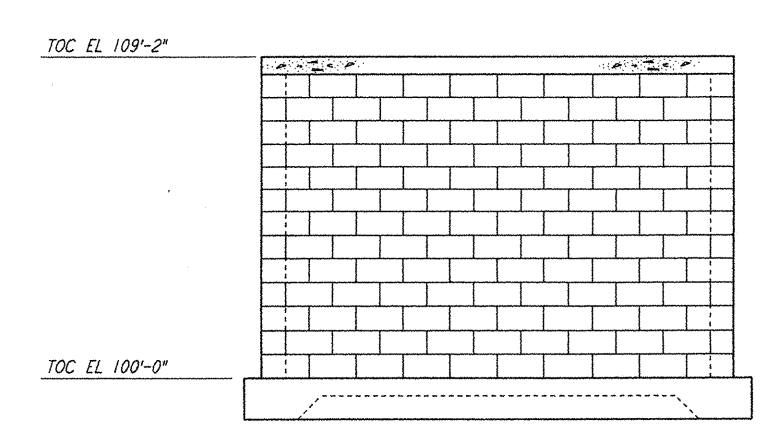


5

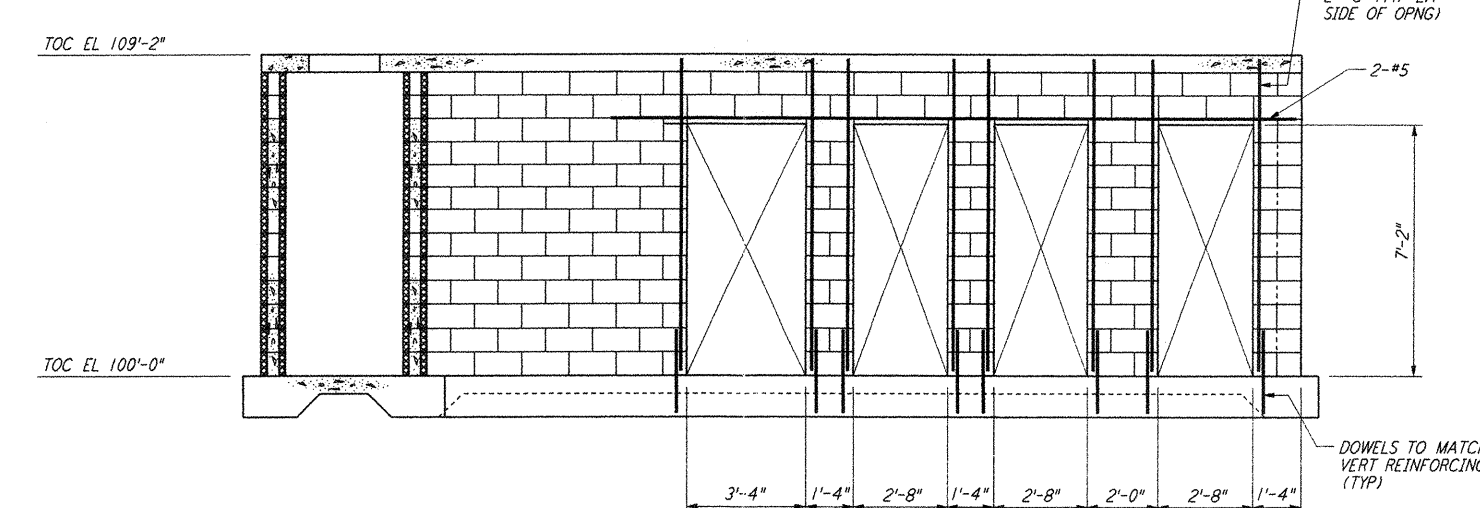
4

3

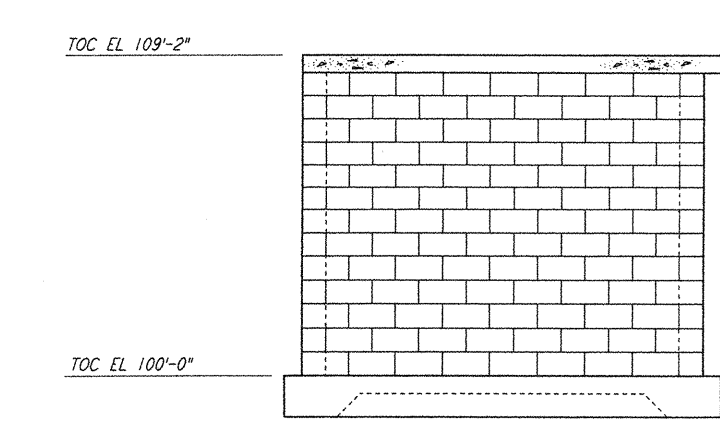
2



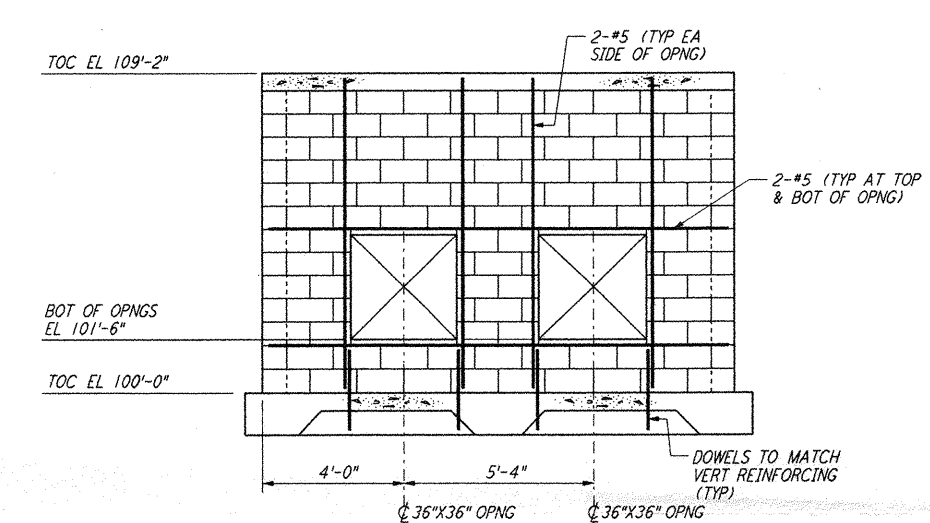
ELEVATION A REF
 1/8" = 1'-0" LA-S-303 LA-S-302



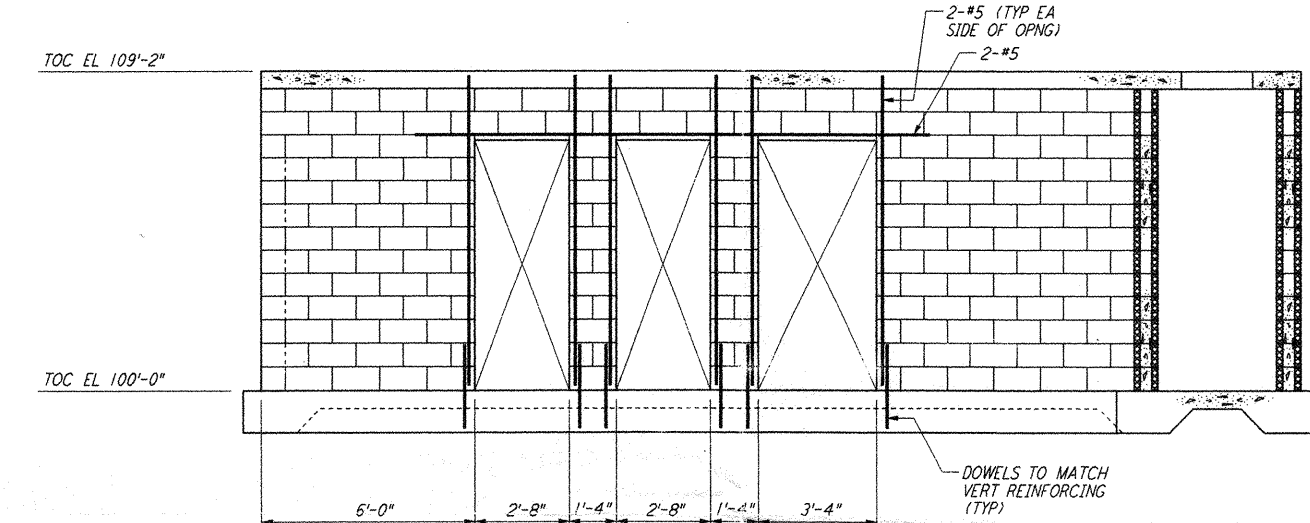
ELEVATION B REF
 1/8" = 1'-0" LA-S-303 LA-S-302



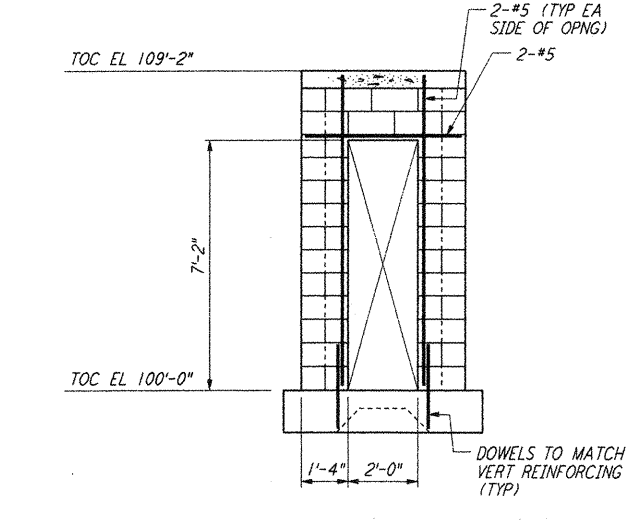
ELEVATION C REF
 1/8" = 1'-0" LA-S-303 LA-S-302



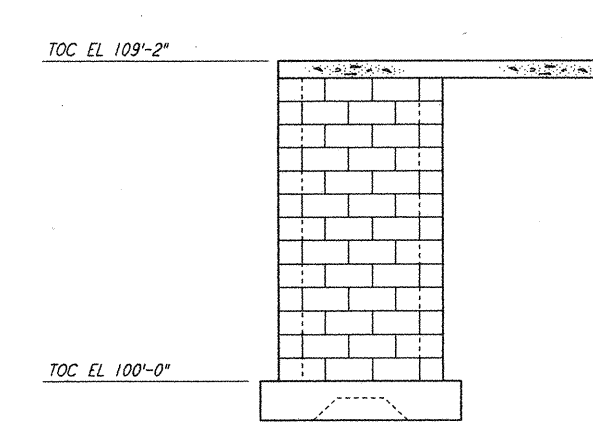
ELEVATION D REF
 1/8" = 1'-0" LA-S-303 LA-S-302



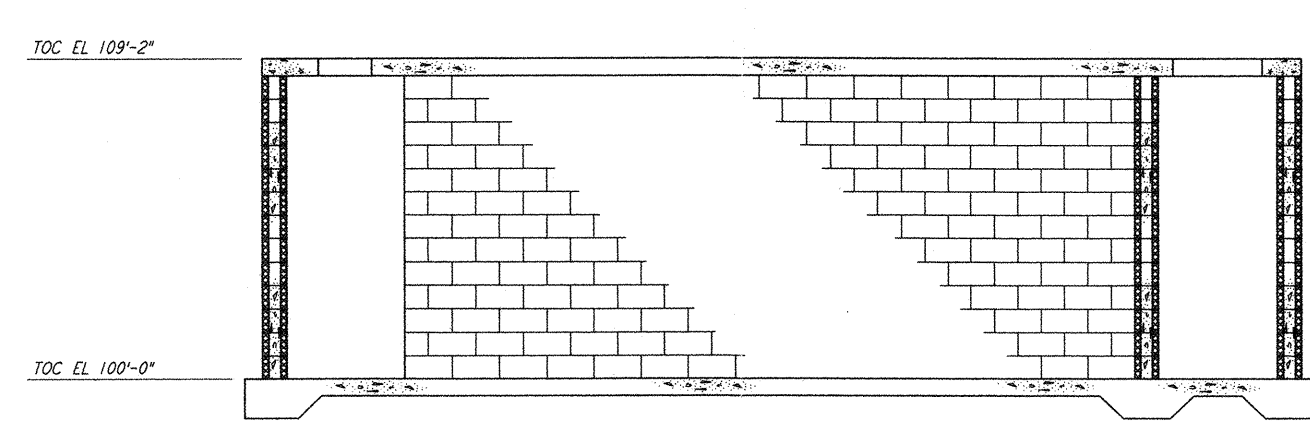
ELEVATION E REF
 1/8" = 1'-0" LA-S-303 LA-S-302



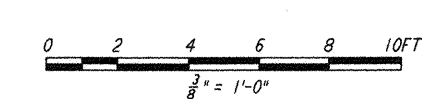
ELEVATION F REF
 1/8" = 1'-0" LA-S-303 LA-S-302



ELEVATION G REF
 1/8" = 1'-0" LA-S-303 LA-S-302



ELEVATION H REF
 1/8" = 1'-0" LA-S-303 LA-S-302



LIGO-D960947-01-0

REFERENCES	ISSUED FOR CONSTRUCTION		 100 WEST WALNUT STREET PASADENA, CALIFORNIA	 CALIFORNIA INSTITUTE OF TECHNOLOGY MASSACHUSETTS INSTITUTE OF TECHNOLOGY	LASER INTERFEROMETER GRAVITATIONAL-WAVE OBSERVATORY SITE NO. 2 - LIVINGSTON, LOUISIANA	
	DRAWN: MCS 11-15-96 CHECKED: DDM 11-15-96 ENGINEER: BP 11-15-96 PROJ: TDM 11-15-96	AS-BUILT DRAWINGS			TITLE: STRUCTURAL END STATIONS "A" & "B" AIR HANDLING UNIT ENCLOSURE ELEVS & SECTS	SCALE: AS NOTED CONTRACT NUMBER: PP150969 PROJECT NUMBER: 8094
NO. DATE BY CHKD ENGR PROJ DESCRIPTION	1 08-07-98 WA [initials] [initials] [initials] ISSUED FOR AS-BUILT					

This document and the design it covers are the property of PARSONS. They are loaned only with the borrower's expressed written agreement that they will not be reproduced, copied, loaned, exhibited, or used in any other way, except by written consent from PARSONS to the borrower.

Thu Aug 13 15:31:37 1998 G:\PLOT\00E\S3-V3682.DWG 522895 K:\V3682\41303.prf LIGOLAF_BDR