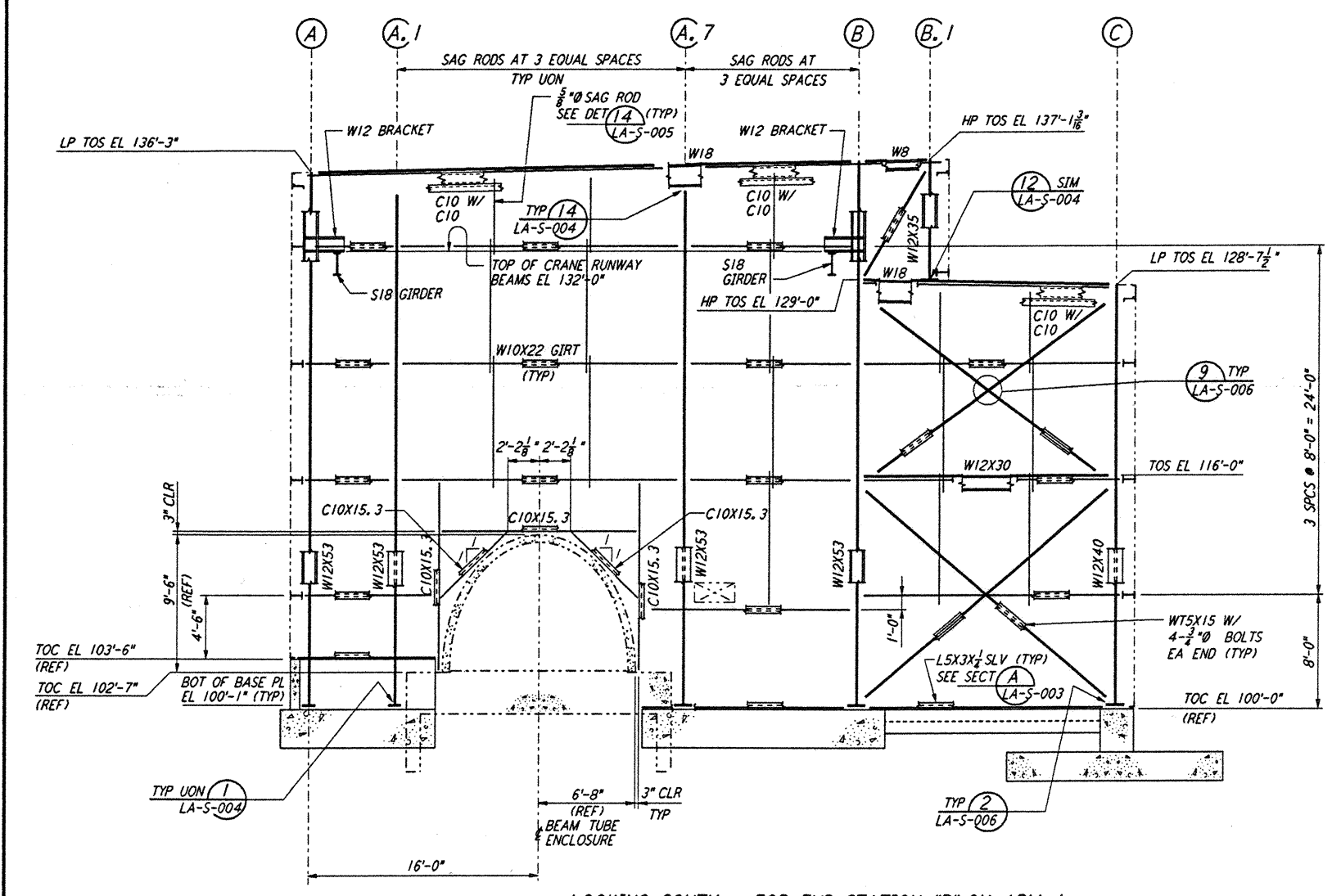
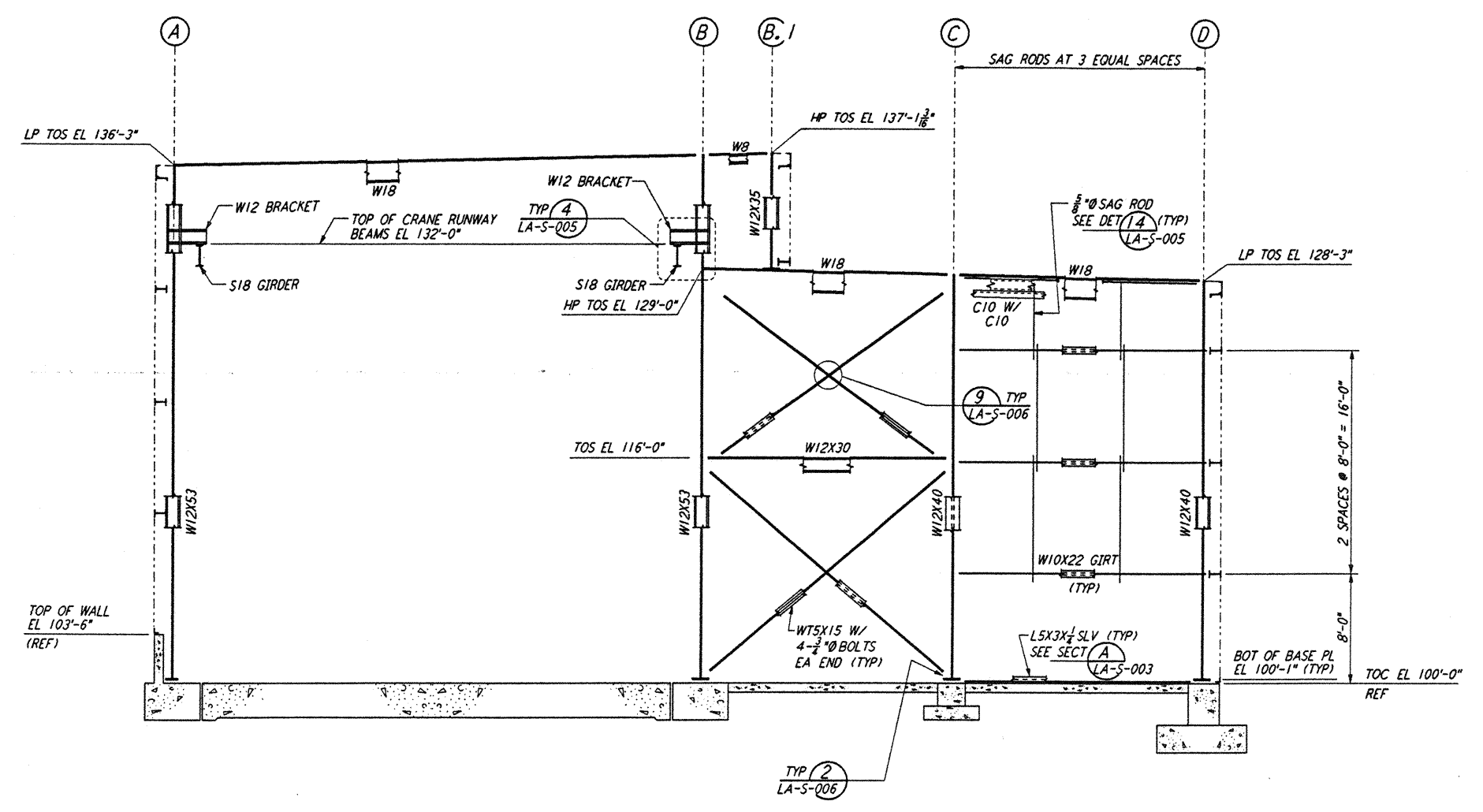


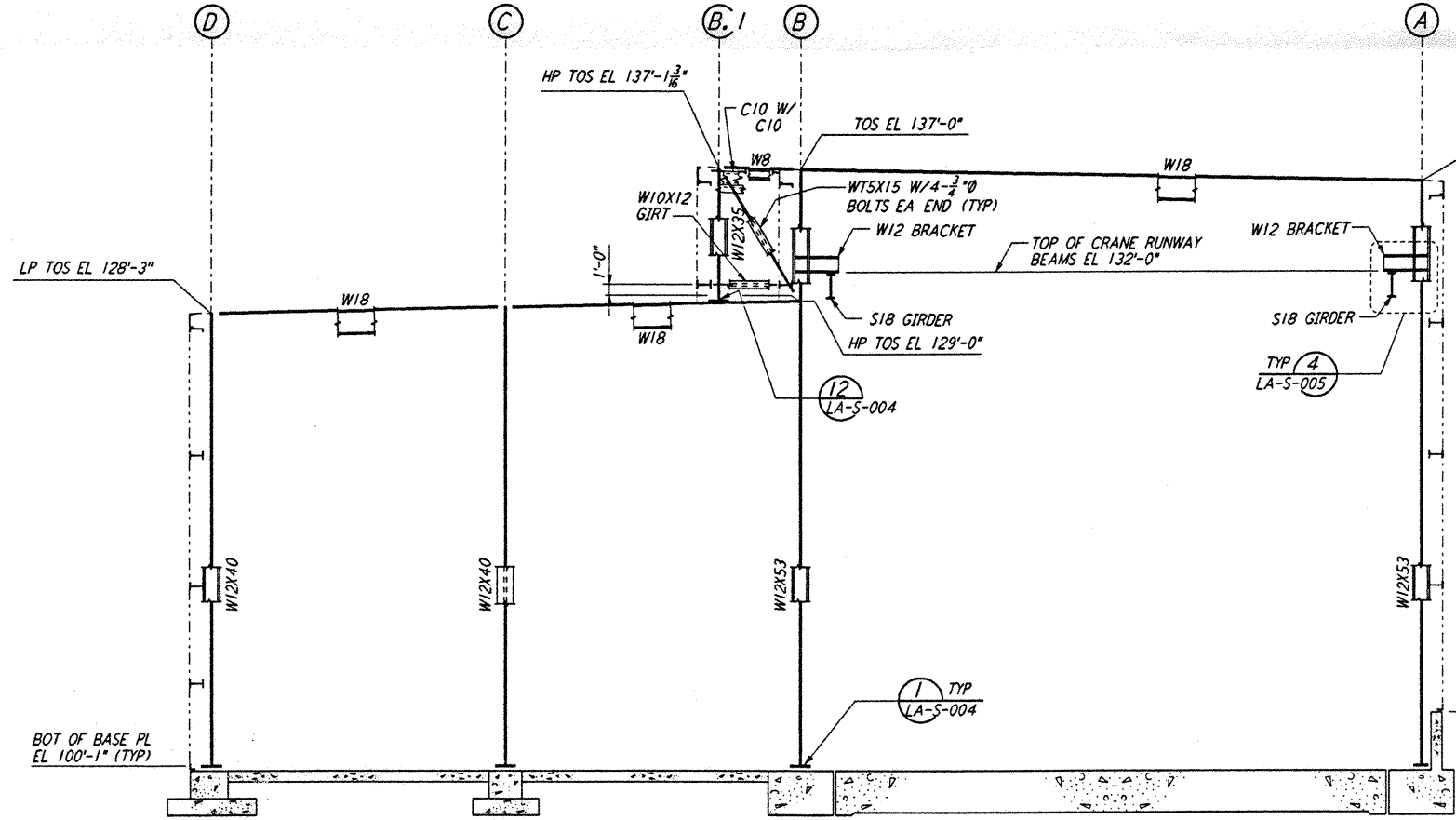
This document and the design it covers are the property of PARSONS. They are loaned only with the borrower's expressed written agreement that they will not be reproduced, copied, loaned, exhibited, or used in any other way, except by written consent from PARSONS.



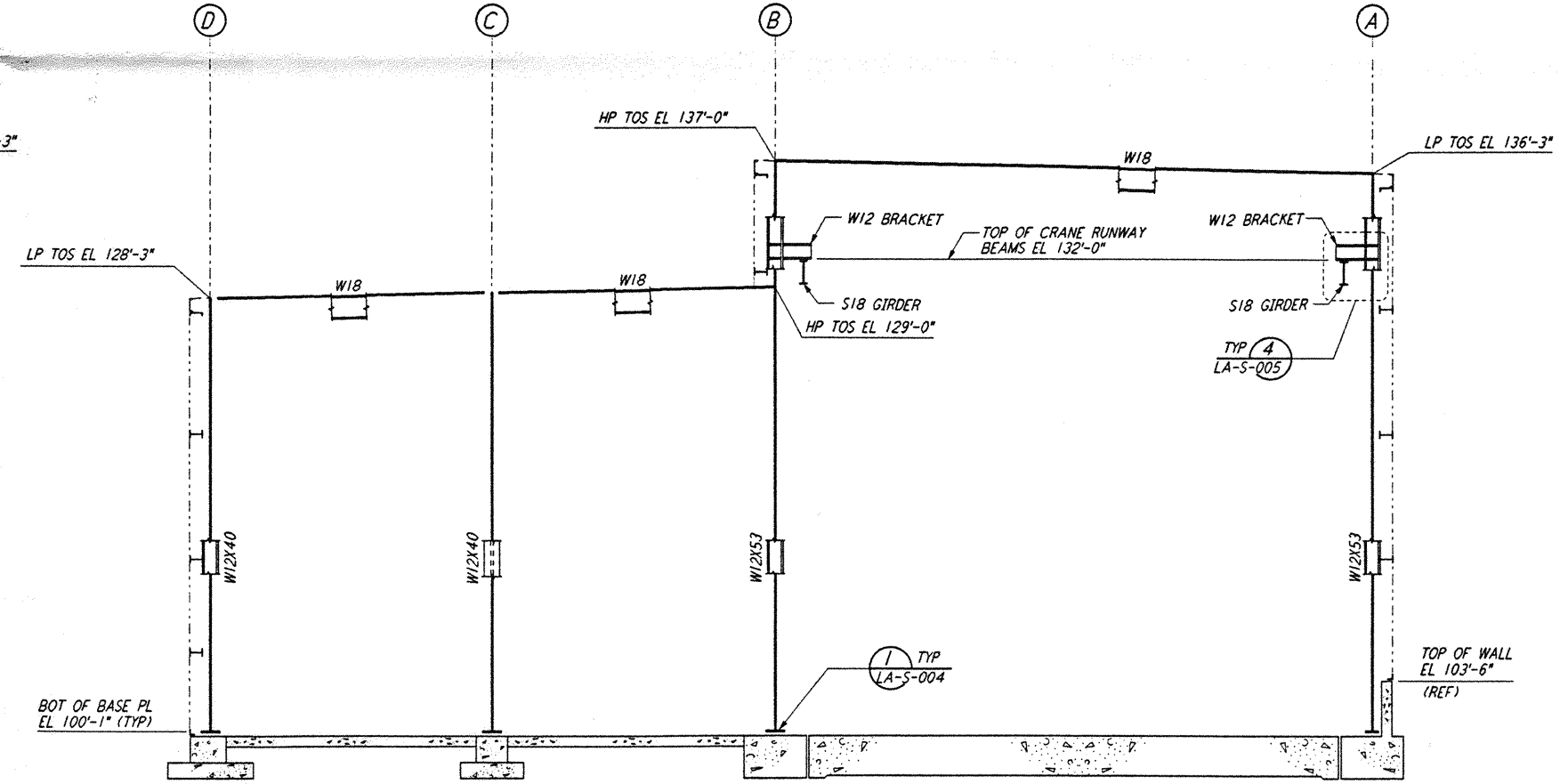
LOOKING SOUTH - FOR END STATION "B" ON ARM 1  
 LOOKING EAST - FOR END STATION "A" ON ARM 2  
 ELEVATION AT COLUMN LINE 1  
 $\frac{3}{8}'' = 1'-0''$



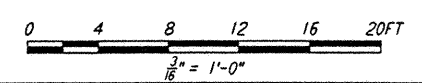
LOOKING SOUTH - FOR END STATION "B" ON ARM 1  
 LOOKING EAST - FOR END STATION "A" ON ARM 2  
 ELEVATION AT COLUMN LINE 2  
 $\frac{3}{8}'' = 1'-0''$



LOOKING NORTH - FOR END STATION "B" ON ARM 1  
 LOOKING WEST - FOR END STATION "A" ON ARM 2  
 ELEVATION AT COLUMN LINE 3  
 $\frac{3}{8}'' = 1'-0''$



LOOKING NORTH - FOR END STATION "B" ON ARM 1  
 LOOKING WEST - FOR END STATION "A" ON ARM 2  
 ELEVATION AT COLUMN LINE 4  
 $\frac{3}{8}'' = 1'-0''$



- NOTES:  
 1. FOR NOTES SEE DRAWING LA-S-107.  
 2. FOR VERTICAL BRACING CONNECTIONS, SEE DETAIL (5) LA-S-006

LIGO-D960949-B-0

NO.	DATE	BY	CHKD	ENGR	PROJ	DESCRIPTION
B	6-14-96	MCS	GM	TM	SPM	FINAL DESIGN REVIEW
A	10-31-95				TOM	PRELIMINARY DESIGN REVIEW

DRAWN	MCS
CHECKED	
ENGINEER	
PROJ	

**PARSONS**  
 100 WEST WALNUT STREET  
 PASADENA, CALIFORNIA

**LIGO**  
 CALIFORNIA INSTITUTE OF TECHNOLOGY  
 MASSACHUSETTS INSTITUTE OF TECHNOLOGY

LASER INTERFEROMETER  
 GRAVITATIONAL-WAVE OBSERVATORY  
 SITE NO. 2 - LIVINGSTON, LOUISIANA

STRUCTURAL  
 END STATIONS "A" & "B"  
 FRAMING ELEVATIONS  
 SHEET 1

AS NOTED PP150969 8094  
 SHEET NUMBER  
**LA-S-305**