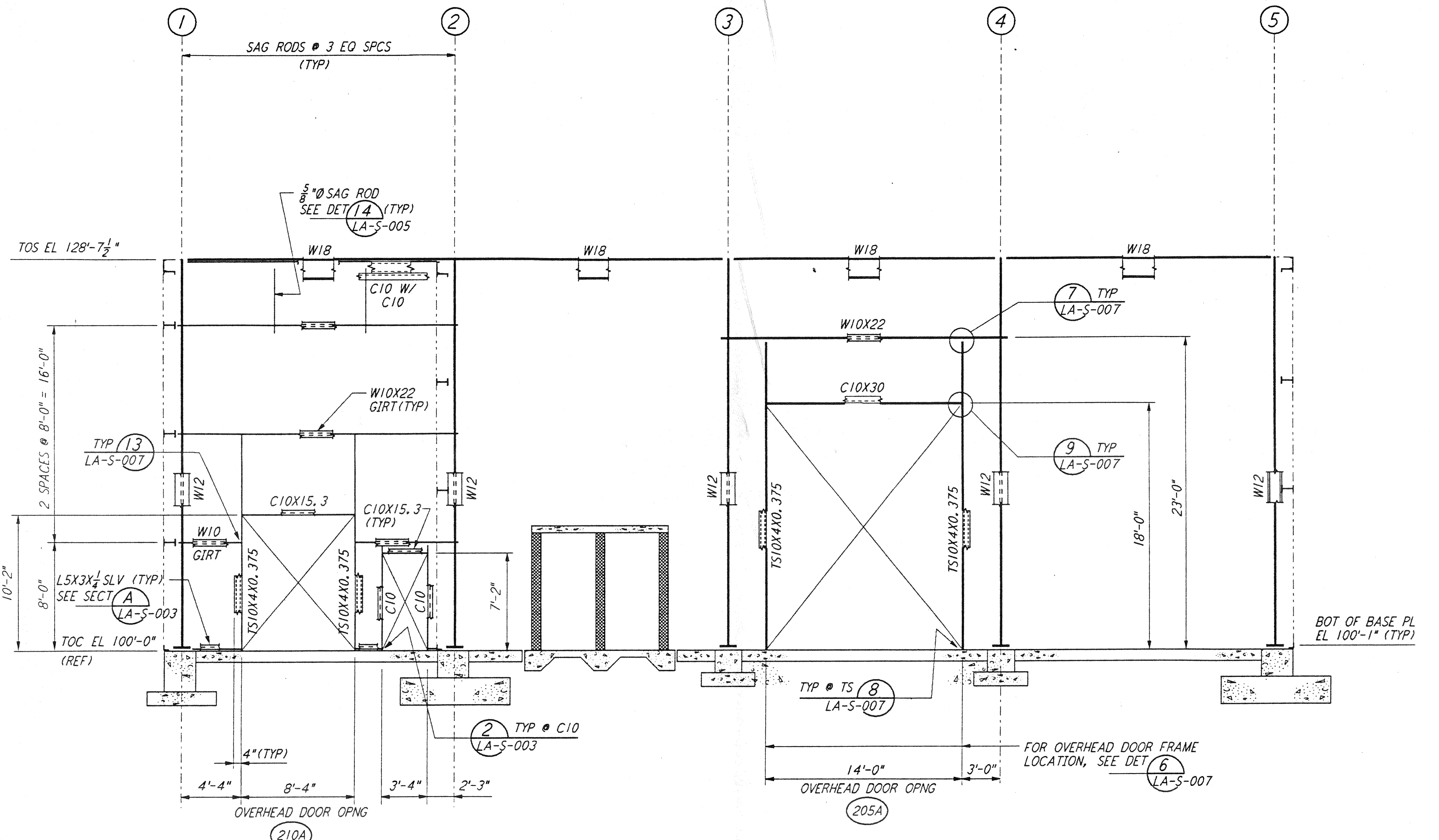
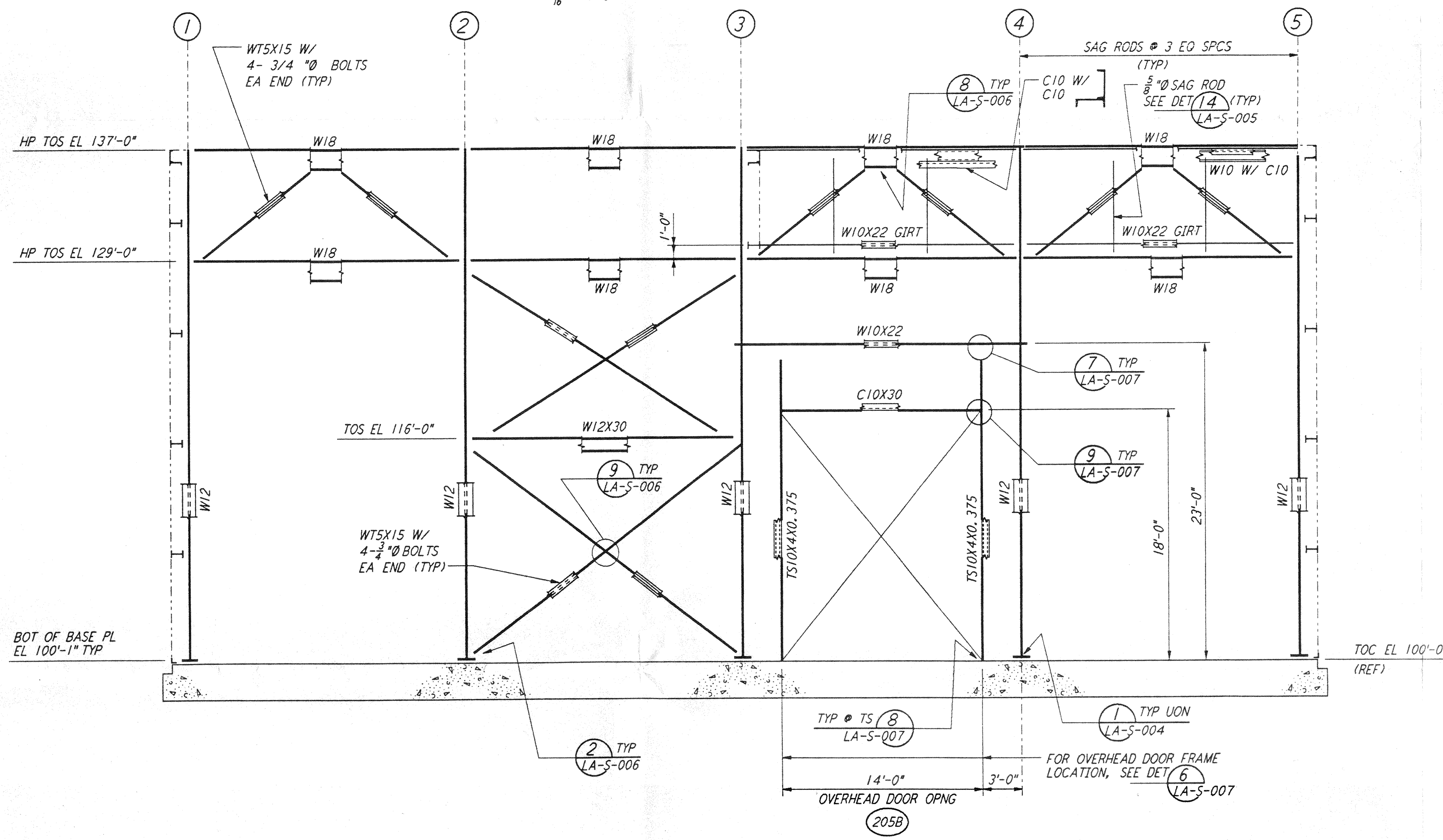


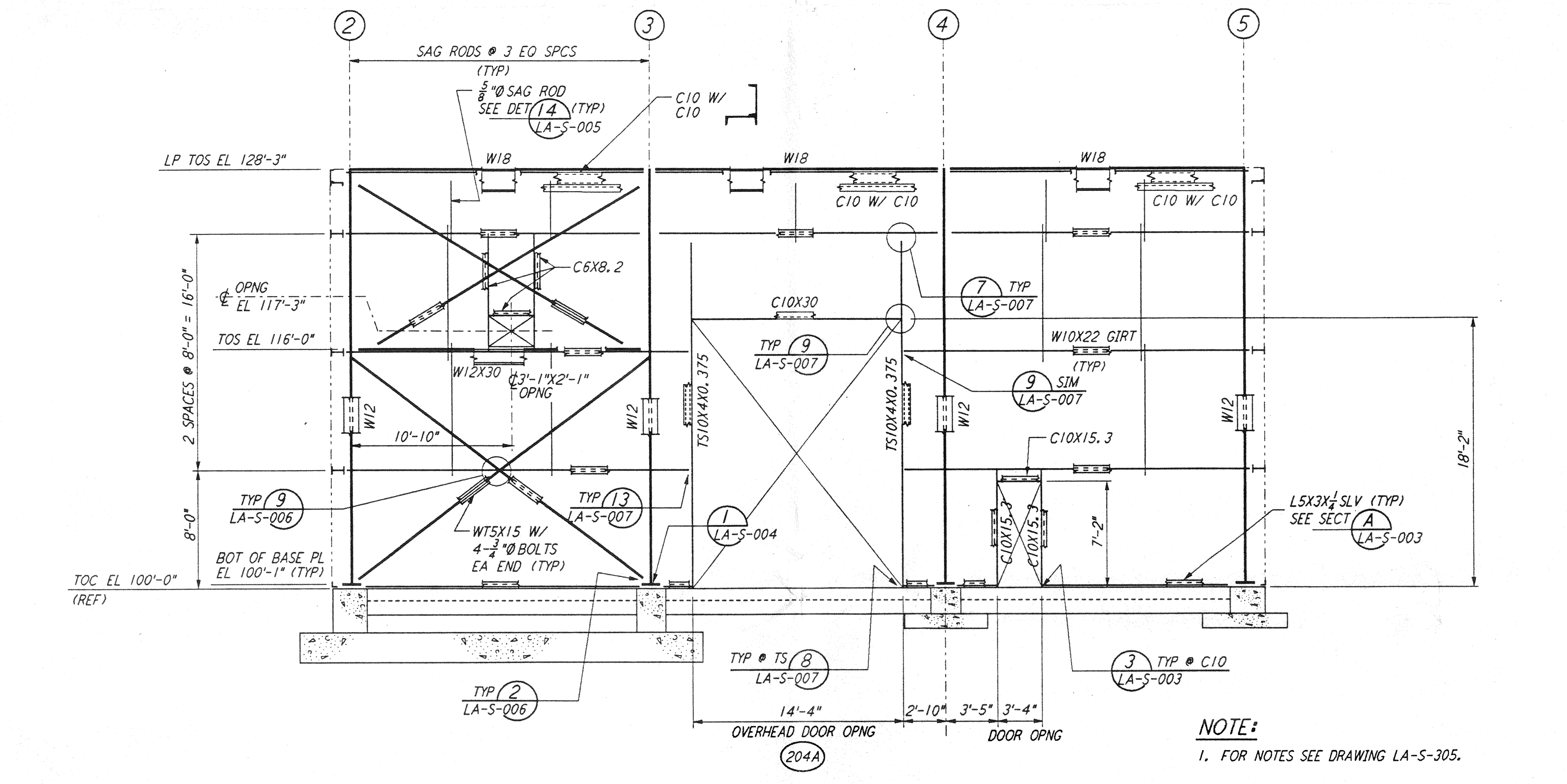
LOOKING EAST - FOR END STATION "B" ON ARM 1
 LOOKING SOUTH - FOR END STATION "A" ON ARM 2
 ELEVATION AT COLUMN LINE A
 $\frac{3}{16}'' = 1'-0''$



LOOKING WEST - FOR END STATION "B" ON ARM 1
 LOOKING NORTH - FOR END STATION "A" ON ARM 2
 ELEVATION AT COLUMN LINE C
 $\frac{3}{16}'' = 1'-0''$

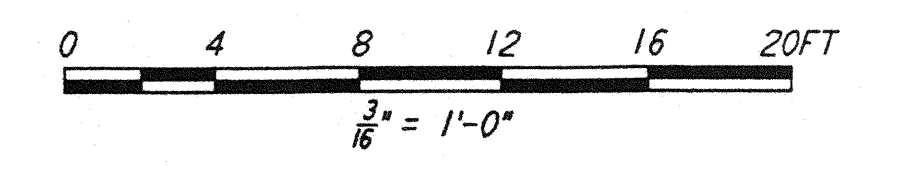


LOOKING WEST - FOR END STATION "B" ON ARM 1
 LOOKING NORTH - FOR END STATION "A" ON ARM 2
 ELEVATION AT COLUMN LINE B
 $\frac{3}{16}'' = 1'-0''$



LOOKING WEST - FOR END STATION "B" ON ARM 1
 LOOKING NORTH - FOR END STATION "A" ON ARM 2
 ELEVATION AT COLUMN LINE D
 $\frac{3}{16}'' = 1'-0''$

NOTE:
 1. FOR NOTES SEE DRAWING LA-S-305.

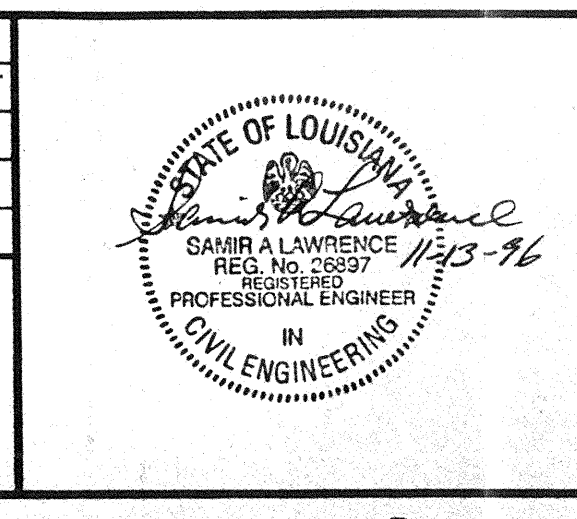


not be reproduced, copied, loaned, exhibited, or used in any other way, except by written consent from PARSONS to the borrower.

This document and the design it covers are the property of PARSONS. They are loaned only with the borrower's expressed written agreement that they will

DRAWING NO.	DESCRIPTION	NO.	DATE	BY	CHKD	ENGR	PROJ	DESCRIPTION

ISSUED FOR CONSTRUCTION	
DRAWN	MCS 11-15-96
CHECKED	
ENGINEER	
PROJ	



PARSONS
 100 WEST WALNUT STREET
 PASADENA, CALIFORNIA

LIGO
 CALIFORNIA INSTITUTE OF TECHNOLOGY
 MASSACHUSETTS INSTITUTE OF TECHNOLOGY

LASER INTERFEROMETER
 GRAVITATIONAL-WAVE OBSERVATORY
 SITE NO. 2 - LIVINGSTON, LOUISIANA

STRUCTURAL
 END STATIONS "A" & "B"
 FRAMING ELEVATIONS
 SHEET 2

SCALE: AS NOTED
 CONTRACT NUMBER: PPI 50969
 PROJECT NUMBER: 8094

LA-S-306