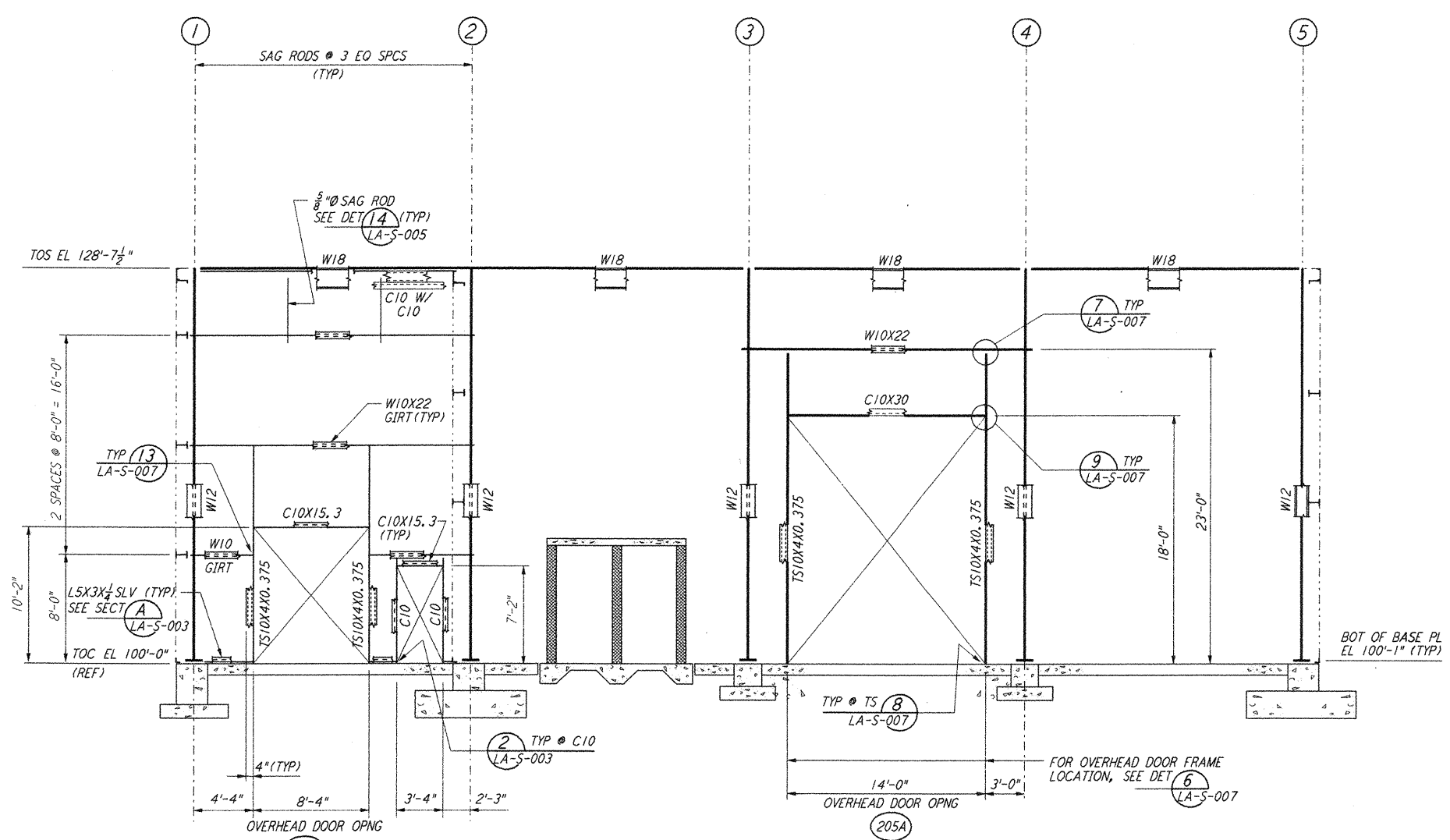
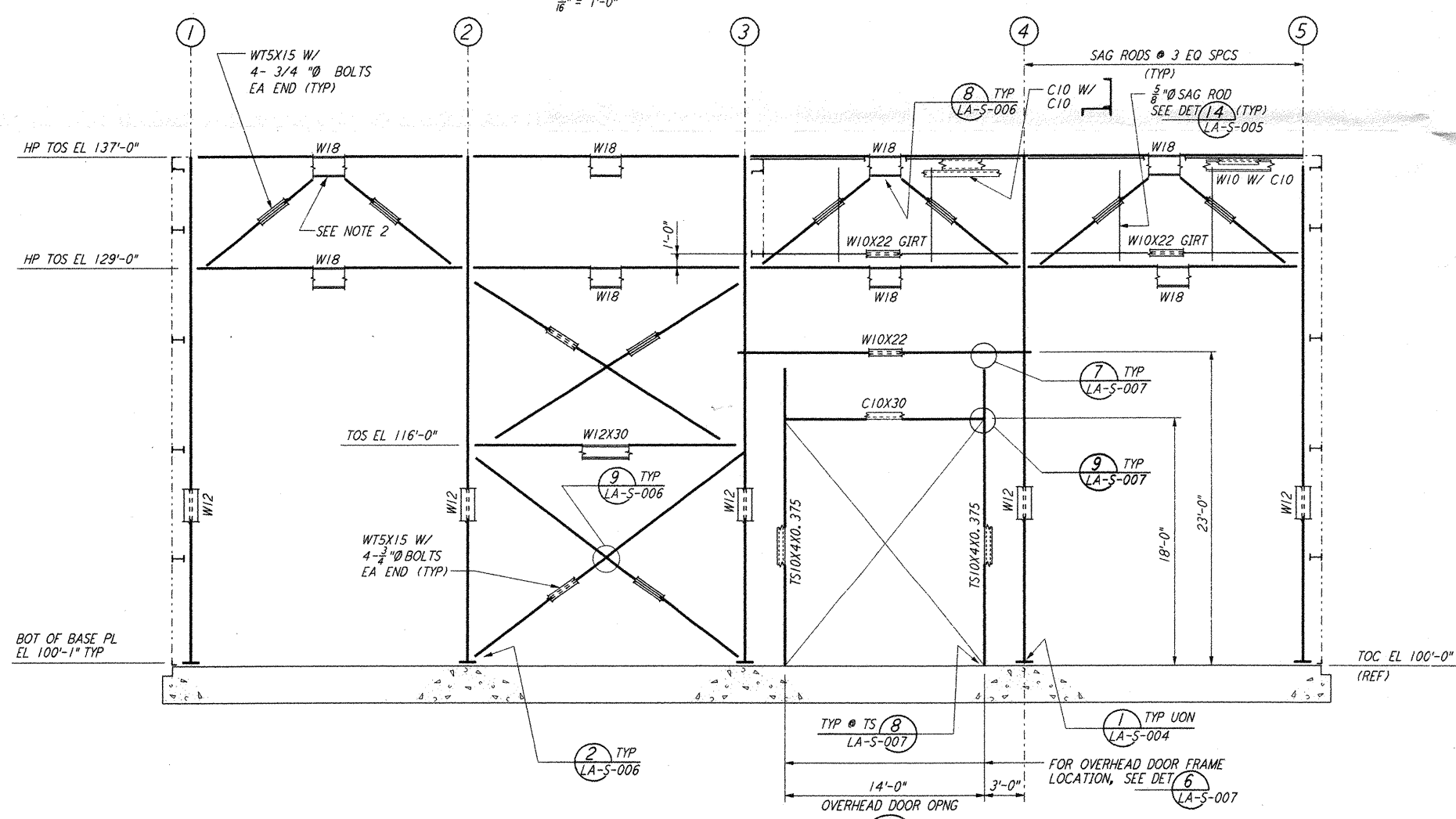


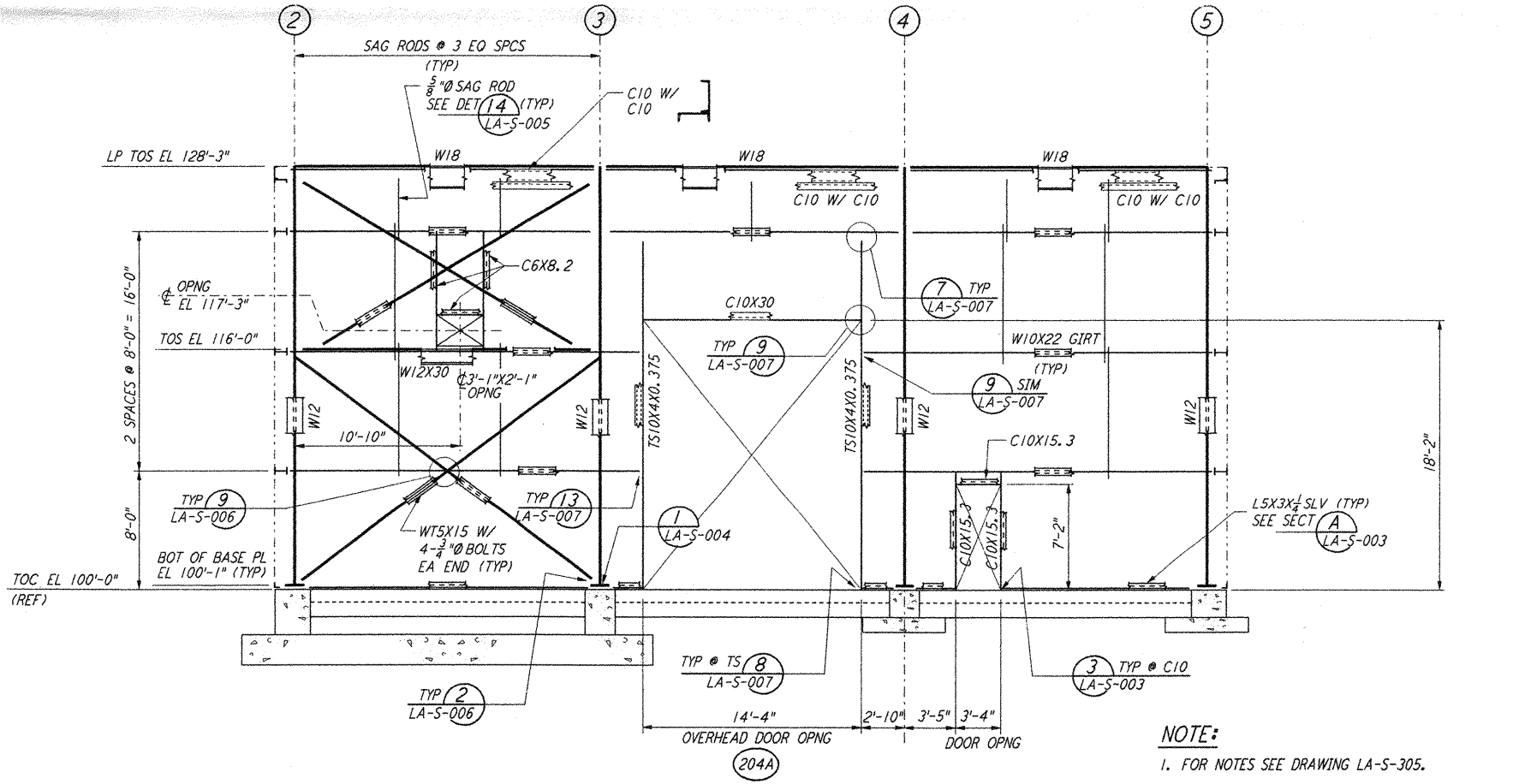
LOOKING EAST - FOR END STATION "B" ON ARM 1
 LOOKING SOUTH - FOR END STATION "A" ON ARM 2
 ELEVATION AT COLUMN LINE A
 $\frac{3}{8}'' = 1'-0''$



LOOKING WEST - FOR END STATION "B" ON ARM 1
 LOOKING NORTH - FOR END STATION "A" ON ARM 2
 ELEVATION AT COLUMN LINE C
 $\frac{3}{8}'' = 1'-0''$

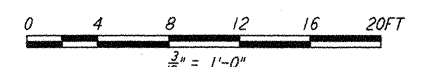


LOOKING WEST - FOR END STATION "B" ON ARM 1
 LOOKING NORTH - FOR END STATION "A" ON ARM 2
 ELEVATION AT COLUMN LINE B
 $\frac{3}{8}'' = 1'-0''$



LOOKING WEST - FOR END STATION "B" ON ARM 1
 LOOKING NORTH - FOR END STATION "A" ON ARM 2
 ELEVATION AT COLUMN LINE D
 $\frac{3}{8}'' = 1'-0''$

- NOTE:**
- FOR NOTES SEE DRAWING LA-S-305.
 - NOTCH $2\frac{1}{2}''$ FROM BOTTOM OF VERTICAL BRACING GUSSET PLATE TO CLEAR DUCT.



LIGO-D960950-01-0

LASER INTERFEROMETER
 GRAVITATIONAL-WAVE OBSERVATORY
 SITE NO. 2 - LIVINGSTON, LOUISIANA

STRUCTURAL
 END STATIONS "A" & "B"
 FRAMING ELEVATIONS
 SHEET 2

SCALE: CONTRACT NUMBER: PROJECT NUMBER:
 AS NOTED PPI50969 8094
 SHEET NUMBER: REVISION:
LA-S-306

PARSONS

100 WEST WALNUT STREET
 PASADENA, CALIFORNIA

LIGO

CALIFORNIA INSTITUTE OF TECHNOLOGY
 MASSACHUSETTS INSTITUTE OF TECHNOLOGY

ISSUED FOR CONSTRUCTION

DRAWN	MCS	11-15-96
CHECKED	DOM	11-15-96
ENGINEER	BP	11-15-96
PROJ	TDM	11-15-96

AS-BUILT DRAWINGS

NO.	DATE	BY	CHKD	ENGR	PROJ	DESCRIPTION
1	08-07-98	WA	WLL	WLL	WLL	ISSUED FOR AS-BUILT

This document and the design it covers are the property of PARSONS. They are loaned only with the borrower's expressed written agreement that they will not be reproduced, copied, loaned, exhibited, or used in any other way, except by written consent from PARSONS to the borrower.

No. Aug 17 8855948 1998 C:\PLOT\JOB\CS3\98B2\DF 52885 PL\98B2\1586.dwg