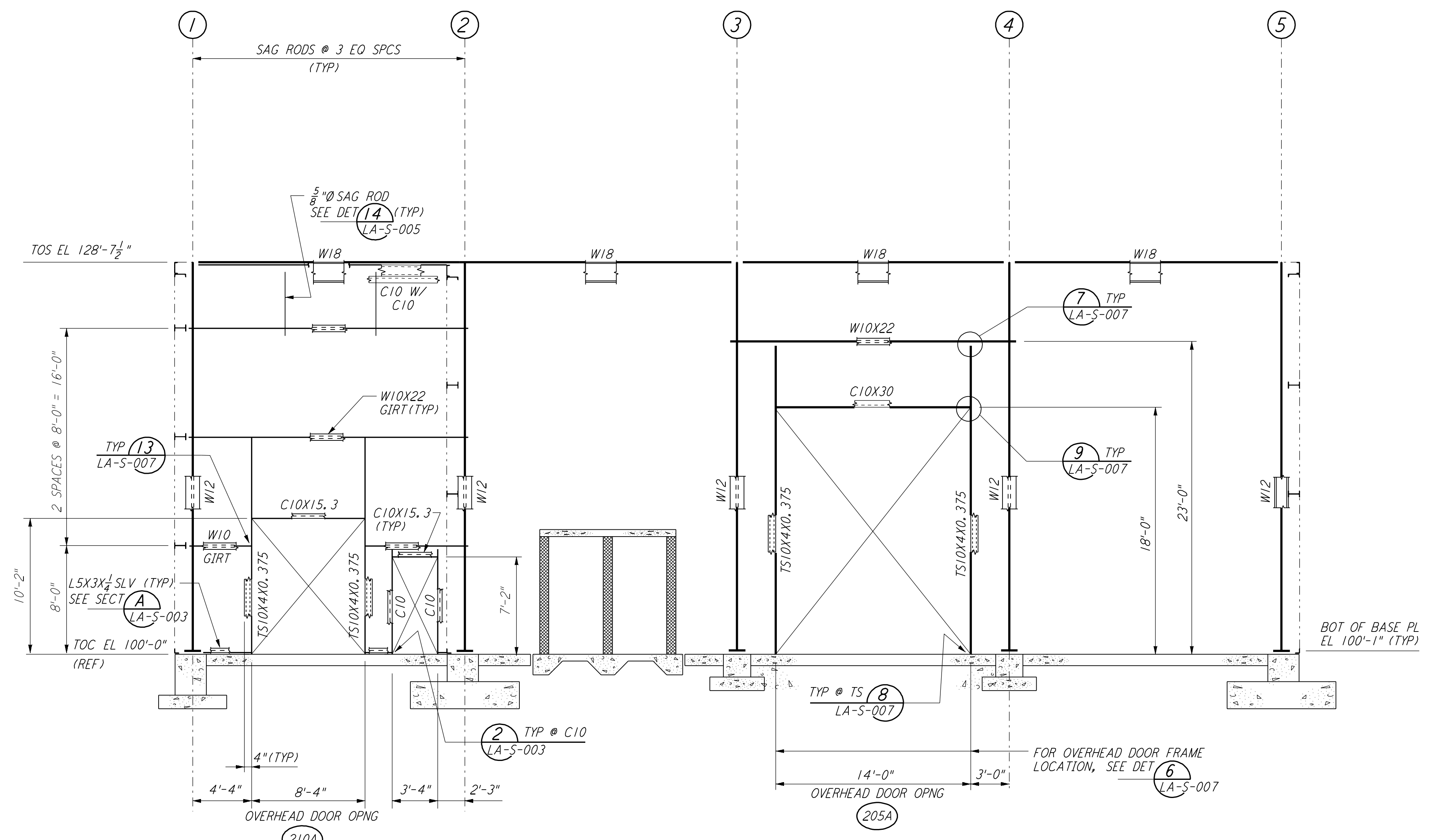


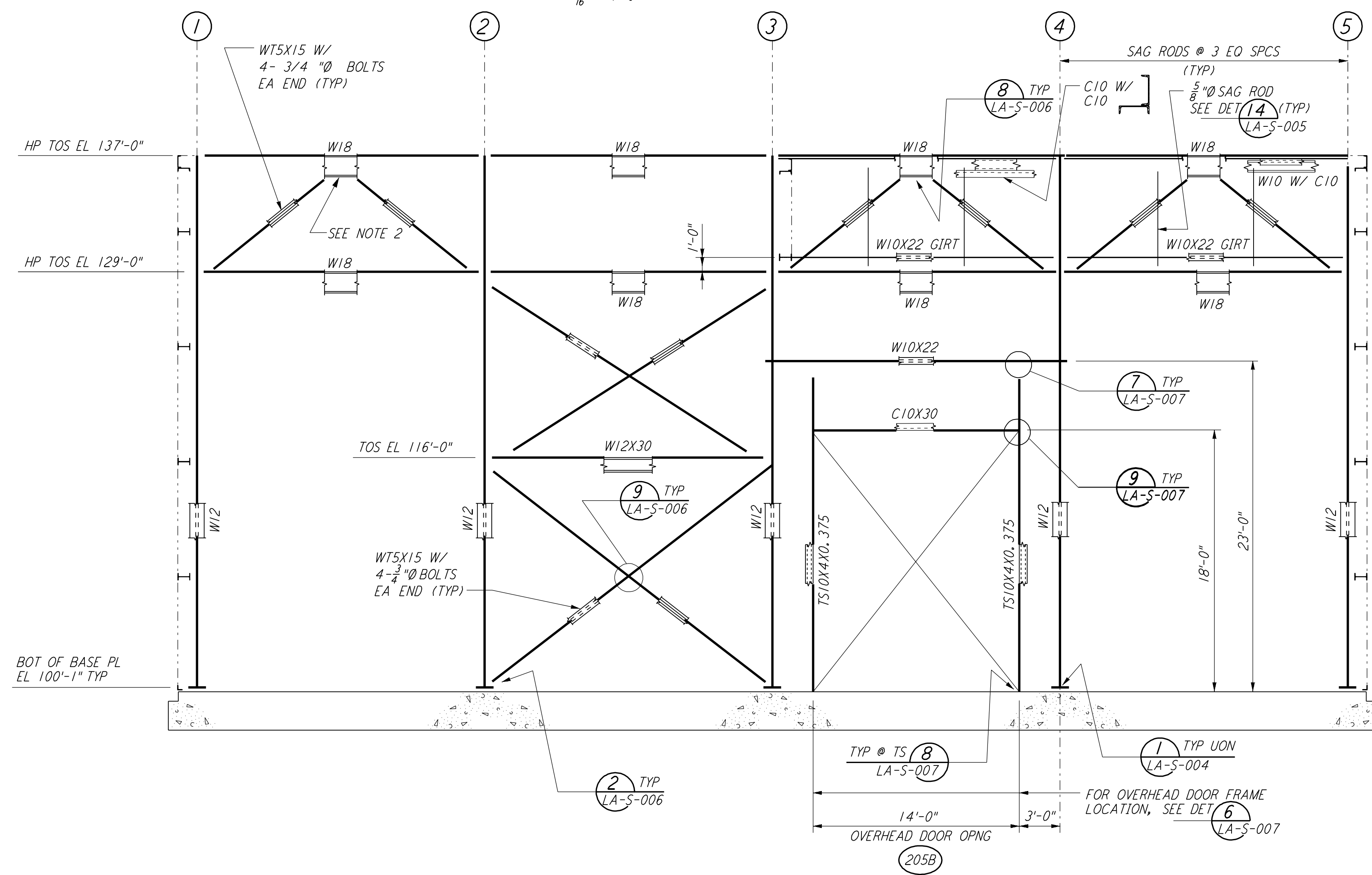
LOOKING EAST - FOR END STATION "B" ON ARM 1
 LOOKING SOUTH - FOR END STATION "A" ON ARM 2
 ELEVATION AT COLUMN LINE A

3/8" = 1'-0"



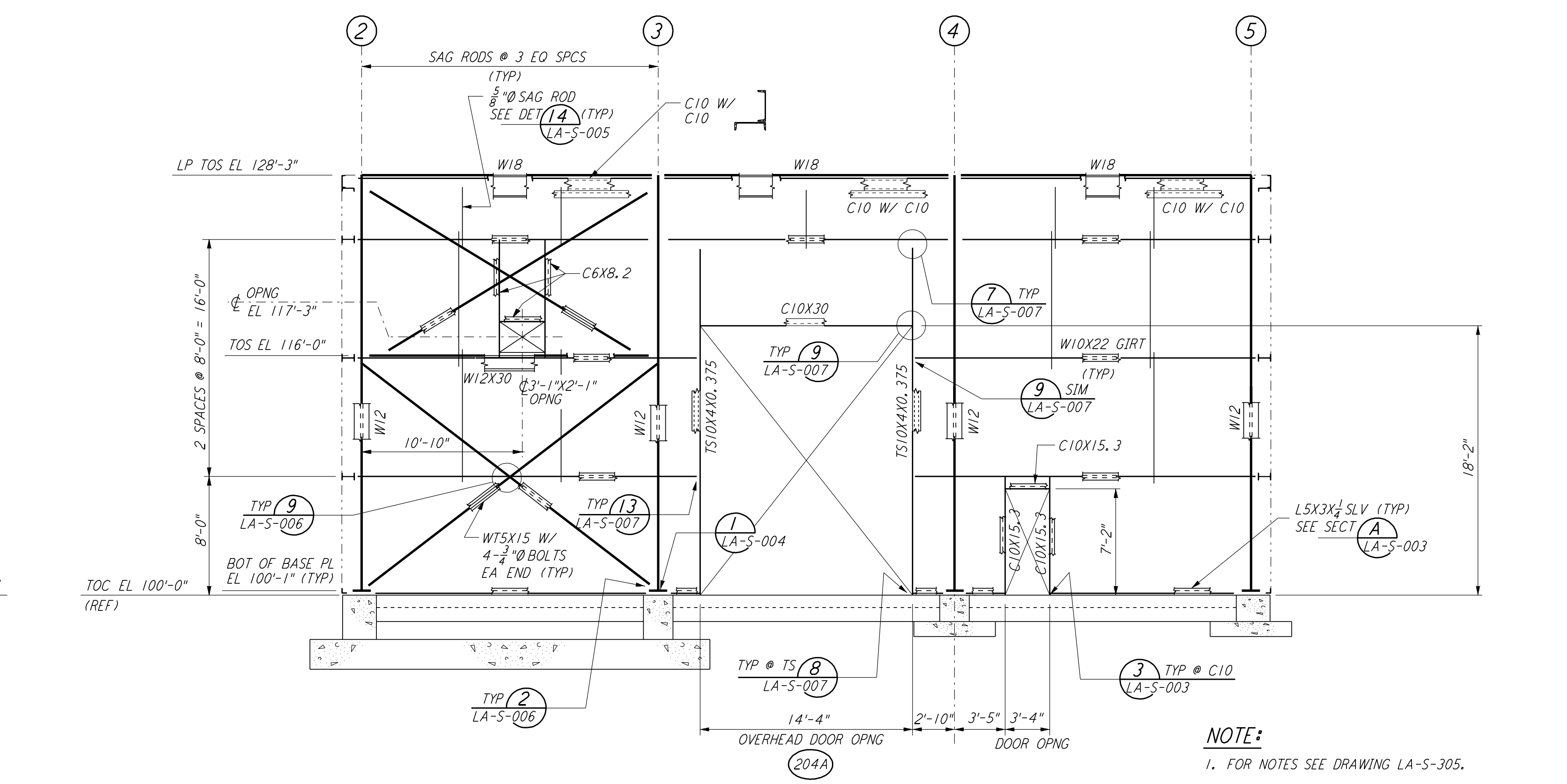
LOOKING WEST - FOR END STATION "B" ON ARM 1
 LOOKING NORTH - FOR END STATION "A" ON ARM 2
 ELEVATION AT COLUMN LINE C

3/8" = 1'-0"



LOOKING WEST - FOR END STATION "B" ON ARM 1
 LOOKING NORTH - FOR END STATION "A" ON ARM 2
 ELEVATION AT COLUMN LINE B

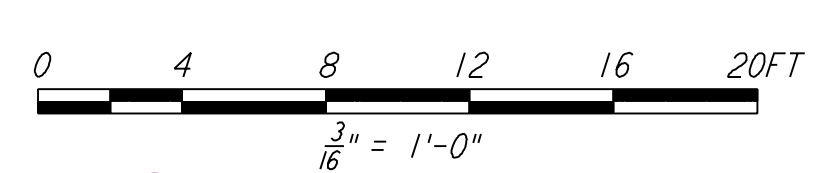
3/8" = 1'-0"



LOOKING WEST - FOR END STATION "B" ON ARM 1
 LOOKING NORTH - FOR END STATION "A" ON ARM 2
 ELEVATION AT COLUMN LINE D

3/8" = 1'-0"

- NOTE:**
- FOR NOTES SEE DRAWING LA-S-305.
 - NOTCH 2 1/2" FROM BOTTOM OF VERTICAL BRACING GUSSET PLATE TO CLEAR DUCT.



LIGO-D960950-01-0

NO.	DATE	BY	CHKD	ENGR	PROJ	DESCRIPTION
1	08-07-98	WA				ISSUED FOR AS-BUILT

ISSUED FOR CONSTRUCTION			
DRAWN	MCS	11-15-96	
CHECKED	DDM	11-15-96	
ENGINEER	BP	11-15-96	
PROJ	TDM	11-15-96	

AS-BUILT DRAWINGS

PARSONS
 100 WEST WALNUT STREET
 PASADENA, CALIFORNIA

LIGO
 CALIFORNIA INSTITUTE OF TECHNOLOGY
 MASSACHUSETTS INSTITUTE OF TECHNOLOGY

LASER INTERFEROMETER
 GRAVITATIONAL-WAVE OBSERVATORY
 SITE NO. 2 - LIVINGSTON, LOUISIANA

STRUCTURAL END STATIONS "A" & "B" FRAMING ELEVATIONS SHEET 2

AS NOTED PP150969 8094
 SHEET NUMBER **LA-S-306**

This document and the design it covers are the property of PARSONS. They are loaned only with the borrower's expressed written agreement that they will not be reproduced, copied, loaned, exhibited, or used in any other way, except by written consent from PARSONS to the borrower.

This document and the design it covers are the property of PARSONS. They are loaned only with the borrower's expressed written agreement that they will not be reproduced, copied, loaned, exhibited, or used in any other way, except by written consent from PARSONS to the borrower.

This document and the design it covers are the property of PARSONS. They are loaned only with the borrower's expressed written agreement that they will not be reproduced, copied, loaned, exhibited, or used in any other way, except by written consent from PARSONS to the borrower.

E
D
C
B
A