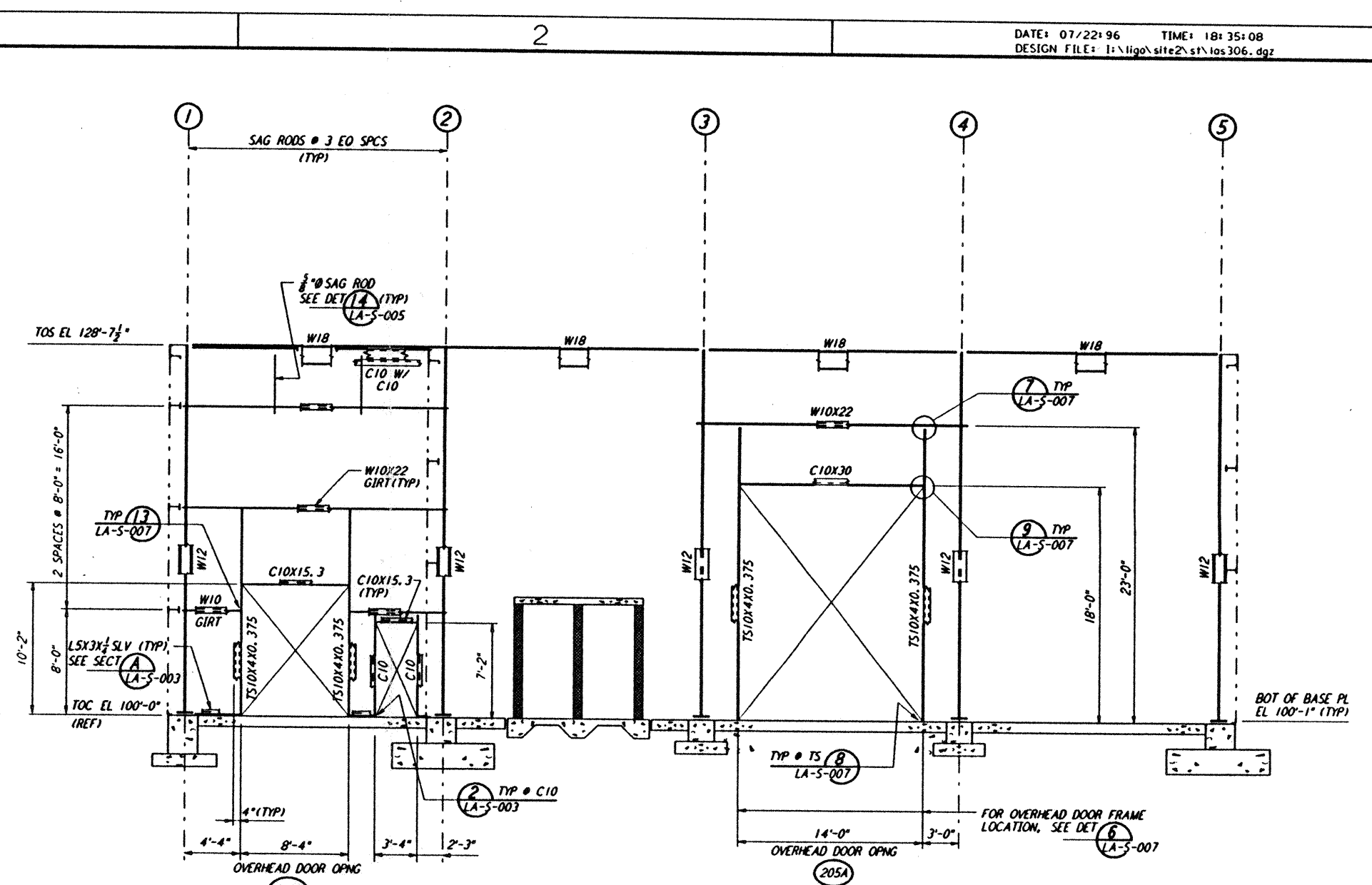
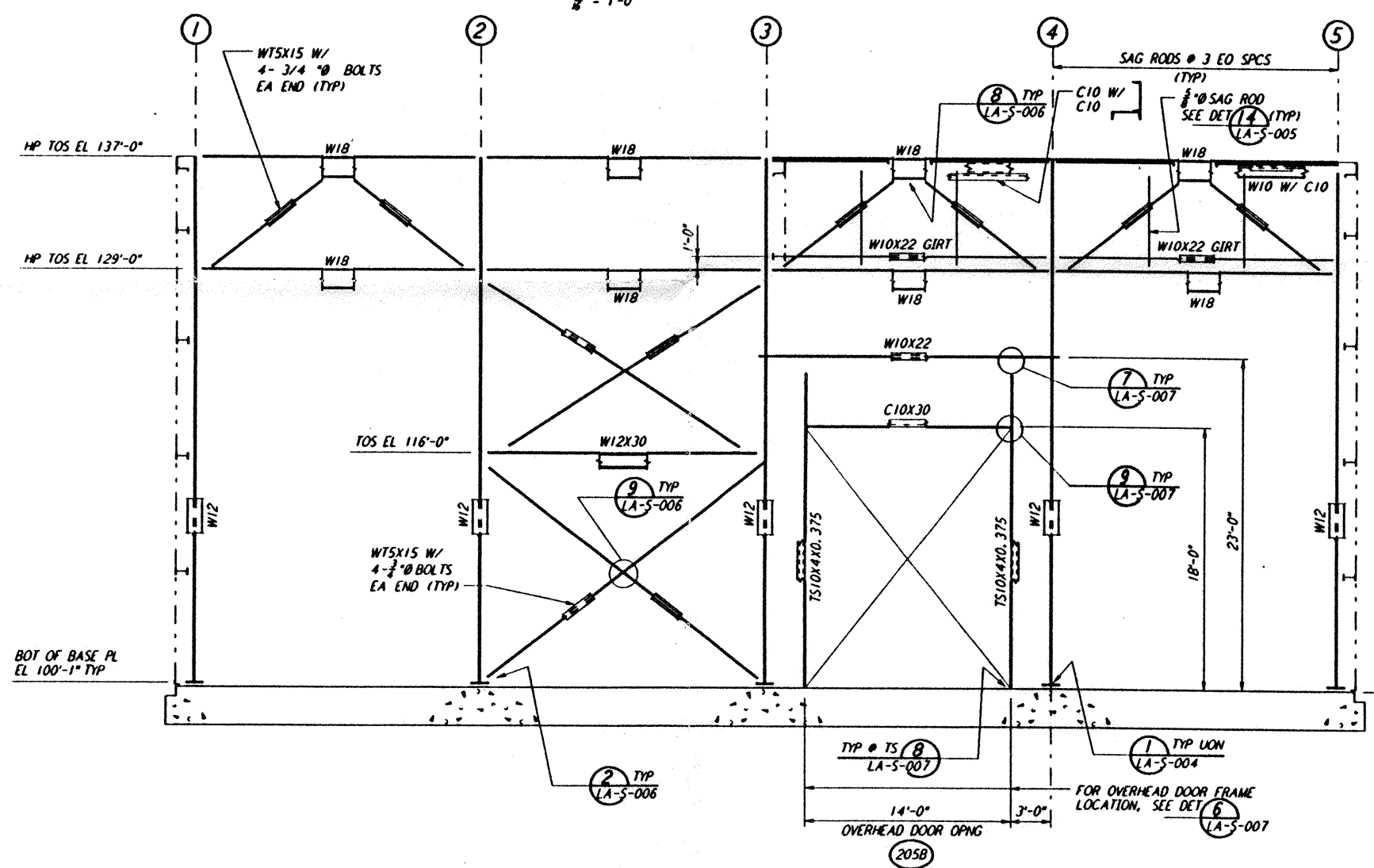


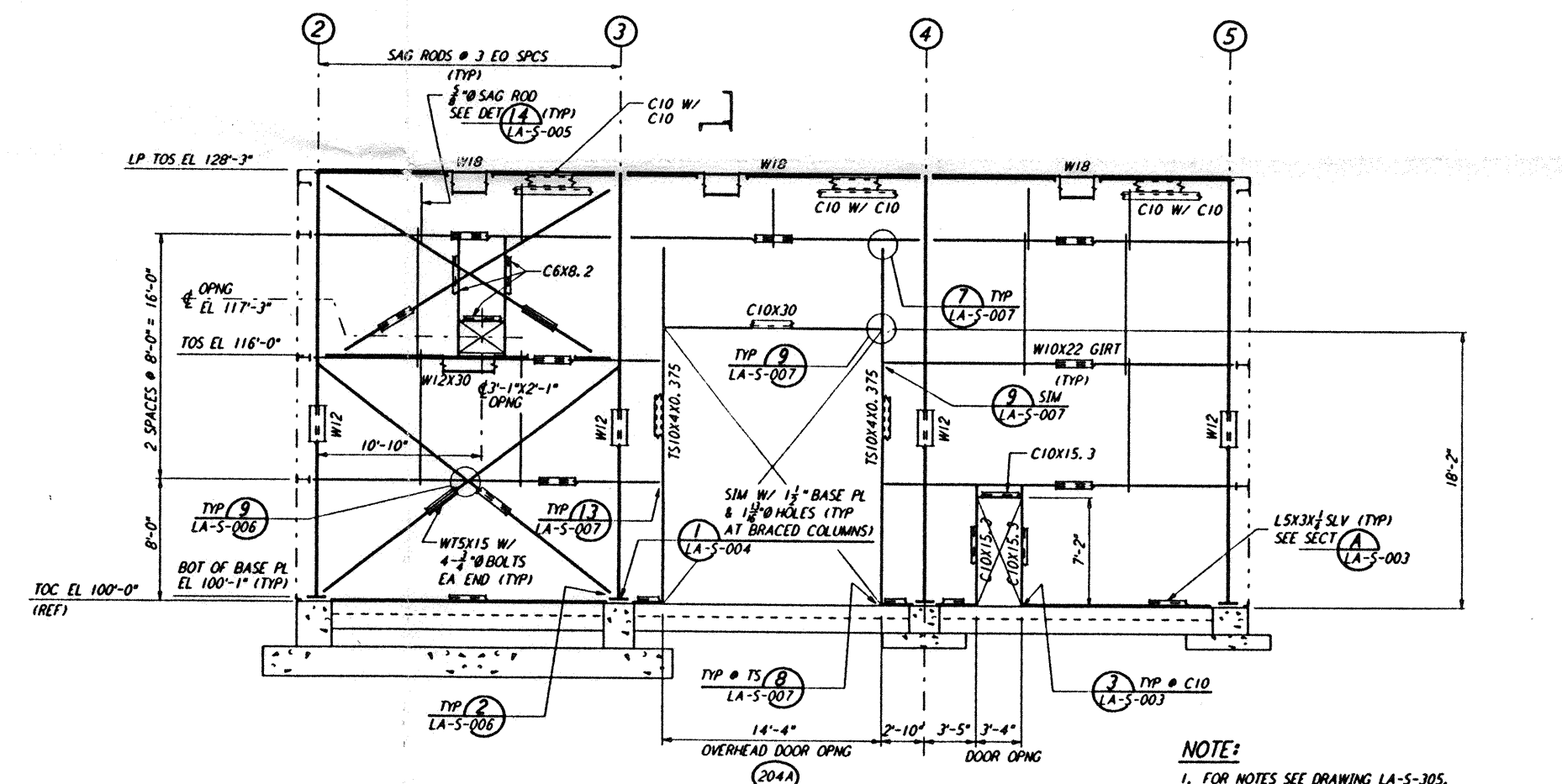
LOOKING EAST - FOR END STATION "B" ON ARM 1
 LOOKING SOUTH - FOR END STATION "A" ON ARM 2
 ELEVATION AT COLUMN LINE A
 1/4" = 1'-0"



LOOKING WEST - FOR END STATION "B" ON ARM 1
 LOOKING NORTH - FOR END STATION "A" ON ARM 2
 ELEVATION AT COLUMN LINE C
 1/4" = 1'-0"

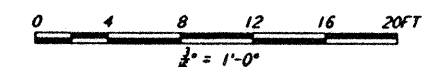


LOOKING WEST - FOR END STATION "B" ON ARM 1
 LOOKING NORTH - FOR END STATION "A" ON ARM 2
 ELEVATION AT COLUMN LINE B
 1/4" = 1'-0"



LOOKING WEST - FOR END STATION "B" ON ARM 1
 LOOKING NORTH - FOR END STATION "A" ON ARM 2
 ELEVATION AT COLUMN LINE D
 1/4" = 1'-0"

NOTE:
 1. FOR NOTES SEE DRAWING LA-S-305.



Mon Jul 22 18:34:16 1996 S3-V18B2 J:\PLOTS\QUEUES\18B2\ST306.PRF

This document and the design it covers are the property of PARSONS. They are loaned only with the borrower's expressed written agreement that they will not be reproduced, copied, loaned, exhibited, or used in any other way, except by written consent from PARSONS to the borrower.

NO.	DATE	BY	CHKD	ENGR	PROJ	DESCRIPTION
C	7-24-96	MCS	BP	TDN		ISSUED FOR BID
B	6-14-96	MCS	DDW	TDN		FINAL DESIGN REVIEW
A	10-31-95			TDN		PRELIMINARY DESIGN REVIEW

DRAWN	MCS
CHECKED	
ENGINEER	
PROJ	

PARSONS
 100 WEST WALNUT STREET
 PASADENA, CALIFORNIA

LIGO
 CALIFORNIA INSTITUTE OF TECHNOLOGY
 MASSACHUSETTS INSTITUTE OF TECHNOLOGY

LASER INTERFEROMETER
 GRAVITATIONAL-WAVE OBSERVATORY
 SITE NO. 2 - LIVINGSTON, LOUISIANA

STRUCTURAL
 END STATIONS "A" & "B"
 FRAMING ELEVATIONS
 SHEET 2

SCALE: AS NOTED
 CONTRACT NUMBER: PPI50969
 PROJECT NUMBER: 8094

LA-S-306