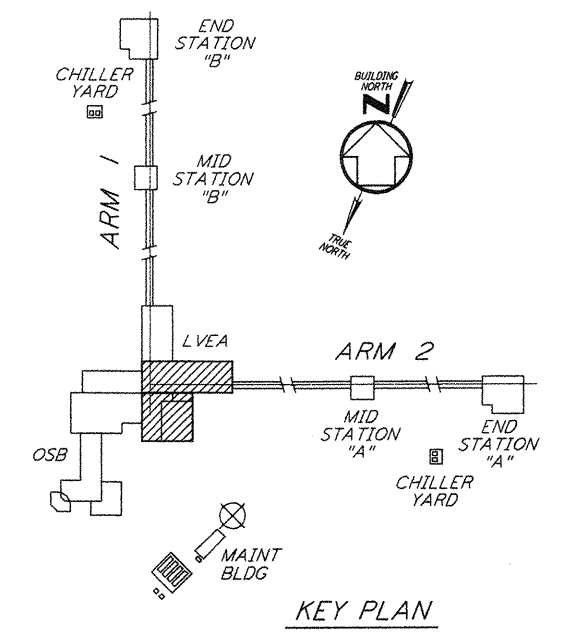


- NOTES:**
- FOR LEGEND, ABBREVIATIONS AND GENERAL NOTES SEE SHEETS LA-H-101 AND LA-H-102.
 - ALL SUPPLY AIR DUCTS SHALL BE DOUBLE WALL WITH 1" RIGID INSULATION AND PERFORATED SHEET METAL LINER.
 - RETURN AIR DUCTS FROM LVEA SHALL BE DOUBLE WALL WITH 2" RIGID INSULATION AND PERFORATED SHEET METAL LINER.
 - RETURN AIR DUCTS FROM OSB SHALL BE SINGLE WALL WITHOUT INSULATION WITHIN OSB ARE, DOUBLE WALL WITH 2" RIGID INSULATION AND PERFORATED SHEET METAL LINER INSIDE LVEA AND MECHANICAL ROOM.
 - RETURN AIR DUCTS FROM MECHANICAL ROOM SHALL BE SINGLE WALL WITHOUT INSULATION.
 - OUTSIDE AIR DUCTS AND INTAKE PLENUMS SHALL BE DOUBLE WALL WITH 2" INSULATION AND SHEET METAL JACKET.
 - THE INTERIOR ENVELOPE OF THE AIR HANDLING UNITS AND THE SUPPLY AIR PLENUM EXCEPT FLOOR SHALL BE COVERED BY 2" RIGID DUCT LINER WITH PERFORATED SHEET METAL LINER.
 - DRAWINGS SHOW THE GENERAL ARRANGEMENT OF THE AIR HANDLING UNITS LAYOUT. THE CONTRACTOR WILL SUBMIT THE SHOP DRAWINGS INDICATING ALL CONSTRUCTION DETAILS.
 - THE TEMPERATURE SENSORS FOR EACH ZONE WILL BE USED TO AVERAGE THE ROOM TEMPERATURE OR TO SELECT ANY ONE TO CONTROL THE ROOM TEMPERATURE.
 - LOCATE ROOM TEMPERATURE SENSORS/TRANSMITTER INSIDE LVEA AT 18" ABOVE FINISHED FLOOR. LOCATE SENSORS AWAY FROM ANY HEAT SOURCE. LOCATE ALL OTHER TEMPERATURE SENSOR/TRANSMITTERS AT 48" ABOVE FLOOR.
 - LOCATE RETURN AIR REGISTERS ON THE WALLS BETWEEN STUDS.
 - FOR PIPING FLOOR PLAN SEE SHEET LA-H-117.
 - FOR LOCATION OF CONTROL PANELS SEE SHEET LA-H-117.

ROOM TEMPERATURE SETTING		
ROOM NAME	TEMPERATURE SET POINT (°F)	
	MIN	MAX
LVEA AREA-1	72	72
LVEA AREA-2	72	72
LVEA AREA-4	72	72
LVEA AREA-5	72	72
MECHANICAL ROOM	65	80

- LEGEND:**
- TT 1/2" - ROOM TEMPERATURE SENSOR/TRANSMITTER
 - TT 1/2" - TEMPERATURE TRANSMITTER ID NUMBER
 - LA-H-111 - LASER VACUUM EQUIPMENT AREA LETTER
 - HF-1 - HEPA FILTER OUTLET, 570 CFM



LVEA FLOOR PLAN
 1/4" = 1'-0"

not be reproduced, copied, loaned, exhibited, or used in any other way, except by written consent from PARSONS to the borrower.

This document and the design it covers are the property of PARSONS. They are loaned only with the borrower's expressed written agreement that they will

NO.	DATE	BY	CHKD	ENGR	PROJ	DESCRIPTION
2	8-7-98	DJB	AA	AA		ISSUED FOR AS-BUILT
1	3-20-97	WVK	AA	AA	TDM	REVISED NOTES 3 AND 4

ISSUED FOR CONSTRUCTION	DRAWN	CHECKED	ENGINEER	PROJ
CLP	MN	AA	TDM	
11-15-96	10-25-96	10-23-96	11-15-96	

AS-BUILT DRAWINGS

PARSONS
 100 WEST WALNUT STREET
 PASADENA, CALIFORNIA

LIGO
 CALIFORNIA INSTITUTE OF TECHNOLOGY
 MASSACHUSETTS INSTITUTE OF TECHNOLOGY

LIGO-D960967-02-0
 LASER INTERFEROMETER
 GRAVITATIONAL-WAVE OBSERVATORY
 SITE NO. 2 - LIVINGSTON, LOUISIANA

HVAC
 CORNER STATION
 LVEA FLOOR PLAN
 SHEET 1

AS NOTED PPI 50969
 PROJECT NUMBER 8094
LA-H-111

17 Aug 14 18:59:25 1998 C:\PLOT\QUE\S3-13882.DWG 62085 K:\V3882.mplib.plt