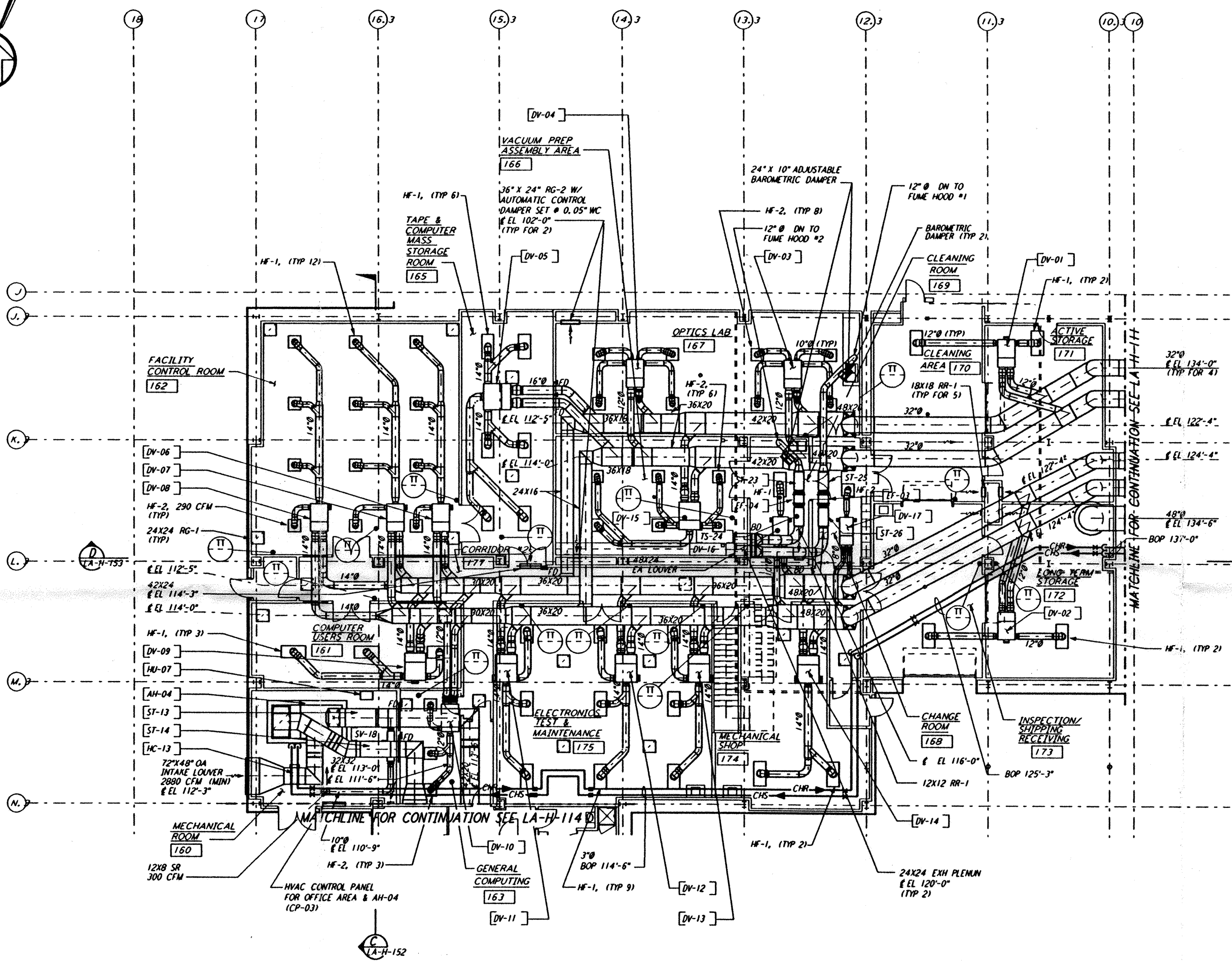


This document and the design it covers are the property of PARSONS. They are loaned only with the borrower's expressed written agreement that they will not be reproduced, copied, loaned, exhibited, or used in any other way, except by written consent from PARSONS to the borrower.

This document and the design it covers are the property of PARSONS. They are loaned only with the borrower's expressed written agreement that they will not be reproduced, copied, loaned, exhibited, or used in any other way, except by written consent from PARSONS to the borrower.



OSB FLOOR PLAN
1/8" = 1'-0"

NOTES:

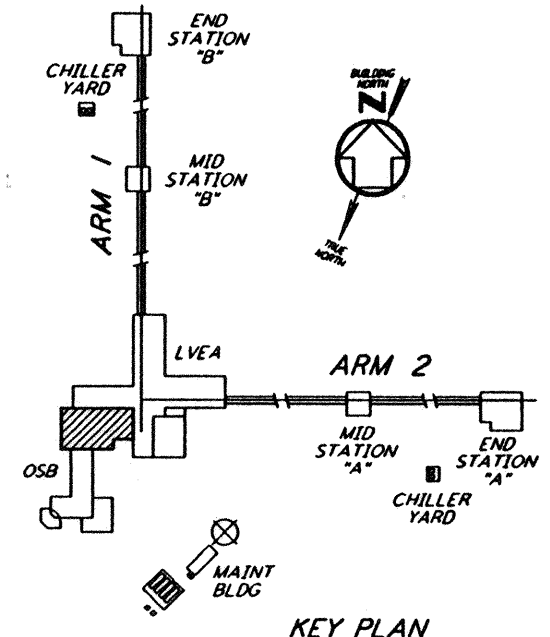
- FOR LEGEND, ABBREVIATIONS AND GENERAL NOTES SEE SHEETS LA-H-001 AND LA-H-002.
- ALL SUPPLY AIR DUCTS SHALL BE DOUBLE WALL WITH 1" RIGID INSULATION AND PERFORATED SHEET METAL LINER.
- RETURN AIR DUCTS SHALL BE DOUBLE WALL WITH 1/2" RIGID INSULATION AND PERFORATED SHEET METAL LINER.
- OUTSIDE AIR DUCTS AND INTAKE PLENUMS SHALL BE DOUBLE WALL WITH 2" INSULATION AND SHEET METAL JACKET.
- FUME HOOD EXHAUST DUCTS SHALL BE SINGLE WALL 304 STAINLESS STEEL, ALL WELDED. INSULATE DISCHARGE PLENUM UP TO THE EXHAUST FAN WITH 1" FIBERGLASS INSULATION & SHEET METAL JACKET.
- HF-1 (48"x24") SHALL BE 500 CFM EACH.
- HF-2 (24"x24") SHALL BE 290 CFM EACH.

VAV TERMINAL NUMBER	SIZE	CFM SETTING				TEMP SETTING	
		COLD		WARM		MIN	MAX
		MIN	MAX	MIN	MAX		
L-CS-171-DV-01	08	0	1160	0	1160	65	80
L-CS-172-DV-02	08	0	1160	0	1160	65	80
L-CS-173-DV-03	08	0	1160	0	1160	72	72
L-CS-170-DV-04	08	0	1160	0	1160	72	72
L-CS-167-DV-05	10	0	3480	0	3480	72	72
L-CS-167-DV-06	08	0	1160	0	1160	72	72
L-CS-166-DV-07	08	0	1160	0	1160	72	72
L-CS-165-DV-08	08	0	1160	0	1160	72	72
L-CS-164-DV-09	09	0	1740	0	1740	72	72
L-CS-164-DV-10	07	0	870	0	870	72	72
L-CS-162-DV-11	09	0	1740	0	1740	72	72
L-CS-161-DV-12	09	0	1740	0	1740	72	72
L-CS-174-DV-13	09	0	1740	0	1740	72	72
L-CS-175-DV-14	09	0	1740	0	1740	72	72
L-CS-175-DV-15	09	0	1740	0	1740	72	72
L-CS-175-DV-16	05	0	500	0	500	72	72
L-CS-175-DV-17	03	0	290	0	290	72	72

ALL VAV TERMINAL SHALL BE CONSTANT VOLUME, FACTORY PRESET.

LEGEND:

- HF-1, HEPA FILTER OUTLET, 500 CFM, 48"x24" (TYP)
- HF-2, HEPA FILTER OUTLET, 290 CFM, 24"x24" (TYP)
- Room Temperature Sensor/Transmitter



KEY PLAN
0 8 16 24 32 FT
1/8" = 1'-0"

NO.	DATE	BY	CHKD	ENGR	PROJ	DESCRIPTION
C	7-24-96	CLP	ME	AA	TDM	ISSUED FOR BID
B	6-14-96	CLP	ME	AA	TDM	FINAL DESIGN REVIEW
A	10-31-95	CLP	ME	AA	TDM	PRELIMINARY DESIGN REVIEW

PARSONS
100 WEST WALNUT STREET
PASADENA, CALIFORNIA

LIGO
CALIFORNIA INSTITUTE OF TECHNOLOGY
MASSACHUSETTS INSTITUTE OF TECHNOLOGY

LASER INTERFEROMETER
GRAVITATIONAL-WAVE OBSERVATORY
SITE NO. 2 - LIVINGSTON, LOUISIANA

HVAC
CORNER STATION
OSB FLOOR PLAN
SHEET 1

AS NOTED PPI50969 B094
LA-H-113

Mon Jul 22 14:28:40 1996 s3-v18b2 J:\PLOTS\QUEUES\18B2\MU113D.PRF