

MAINTENANCE BUILDING FLOOR PLAN
1/4" = 1'-0"

NOTES:

1. FOR LEGEND, ABBREVIATIONS AND GENERAL NOTES SEE SHEETS LA-H-001 AND LA-H-002.

SEQUENCE OF OPERATION:

MAINTENANCE ROOM:

UPON A SIGNAL FROM THE CENTRAL CONTROL SYSTEM THE AIR HANDLING UNIT (AH-05) SHALL START. THE DDC CONTROL SHALL PERFORM THE FOLLOWING:

- A. THE DDC CONTROLS SHALL MODULATE THE CONTROL DAMPERS ON THE OUTSIDE AIR AND THE RETURN AIR DUCTS TO MAINTAIN THE ROOM TEMPERATURE AT 72°F AND MAINTAIN 750 CFM OF OUTSIDE AIR MINIMUM.
- B. WHEN THE ROOM TEMPERATURE DROPS BELOW 68°F THE DDC CONTROL SHALL ACTIVATE THE ELECTRIC DUCT HEATER (HC-14) TO MAINTAIN THE ROOM AT 68°F.
- C. AFTER BUSINESS HOURS THE DDC CONTROLS SHALL CLOSE OFF THE OUTSIDE AIR DAMPER AND FULLY OPEN THE RETURN AIR DAMPER AND MAINTAIN THE ROOM TEMPERATURE AT 65°F.
- D. IF THE ROOM TEMPERATURE DROPS BELOW 50°F, THE DDC CONTROLS SHALL REPORT AN ALARM SIGNAL TO FACILITY CONTROL AND MONITORING SYSTEM AT THE CORNER STATION.

FIRE PUMP ROOM:

- A. THE PACKAGED CONTROLS ON THE ELECTRIC CONVECTOR SHALL MAINTAIN THE ROOM TEMPERATURE AT 60°F.
- B. IF THE ROOM TEMPERATURE RISES ABOVE 104°F THE DDC CONTROLS SHALL OPEN THE GRAVITY VENTILATION DAMPERS. THE GRAVITY VENTILATION DAMPERS SHALL CLOSE WHEN THE ROOM TEMPERATURE DROPS BELOW 95°F.
- C. IF THE ROOM TEMPERATURE RISES TO 110°F OR DROPS BELOW 50°F, THE DDC CONTROLS SHALL REPORT AN ALARM SIGNAL TO FACILITY CONTROL AND MONITORING SYSTEM AT THE CORNER STATION.

DOMESTIC WATER PUMP ROOM:

SAME AS FIRE PUMP ROOM.

ELECTRICAL ROOM:

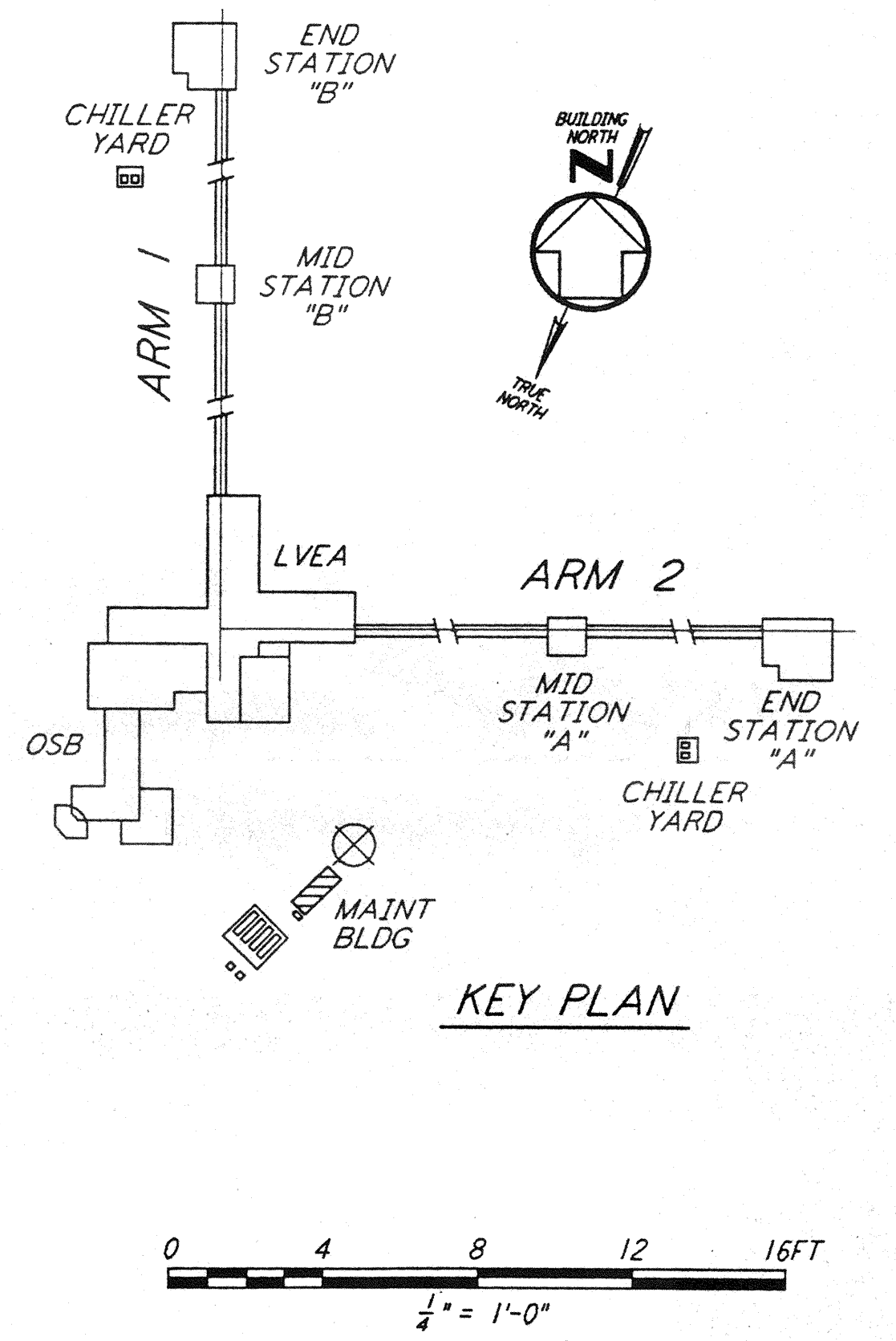
SAME AS FIRE PUMP ROOM.

not be reproduced, copied, loaned, exhibited, or used in any other way, except by written consent from PARSONS to the borrower.

This document and the design it covers are the property of PARSONS. They are loaned only with the borrower's expressed written agreement that they will

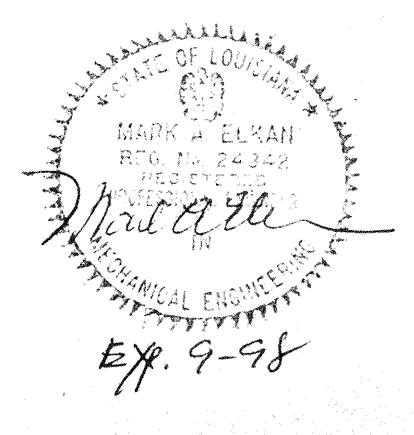
INPUT/OUTPUT SUMMARY FOR MAINTENANCE BUILDING

SYSTEM, APPARATUS, OR AREA POINT DESCRIPTION	INPUTS			OUTPUTS			SYSTEM FEATURES		GENERAL	SUPPLEMENTARY NOTES
	ANALOG		BINARY	DIGITAL	ANALOG	ALARMS	PROGRAMS			
	MEASURED	CALCULATED								
AIR HANDLING UNIT, AH-05							TIME SCHEDULING			PROVIDE NIGHT TIME SETBACK
HEATING COIL, HC-14	•		•							
CONVECTOR, HT-01	•		•							
CONVECTOR, HT-02			•							
CONVECTOR, HT-03			•							
CONVECTOR, HT-04			•							
ROOM TEMPERATURE (195)	•					•				
ROOM TEMPERATURE (194)	•					•				
ROOM TEMPERATURE (196)	•					•				
ROOM TEMPERATURE (192)	•					•				
GRAVITY DAMPERS (RM 195)				•						
GRAVITY DAMPERS (RM 196)				•						
GRAVITY DAMPERS (RM 192)				•						
FLOOR PLAN									•	



REFERENCES	REVISIONS	NO.	DATE	BY	CHKD	ENGR	PROJ	DESCRIPTION

ISSUED FOR CONSTRUCTION	CLP	11-15-96
DRAWN		
CHECKED		10-25-96
ENGINEER	AA	10-23-96
PROJ		11/15/96



100 WEST WALNUT STREET
PASADENA, CALIFORNIA



CALIFORNIA INSTITUTE OF TECHNOLOGY
MASSACHUSETTS INSTITUTE OF TECHNOLOGY

LASER INTERFEROMETER
GRAVITATIONAL-WAVE OBSERVATORY
SITE NO. 2 - LIVINGSTON, LOUISIANA

TITLE: HVAC CORNER STATION MAINTENANCE BUILDING FLOOR PLAN

SCALE: AS NOTED
CONTRACT NUMBER: PPI 50969
PROJECT NUMBER: 8094

SHEET NUMBER: **LA-H-116**