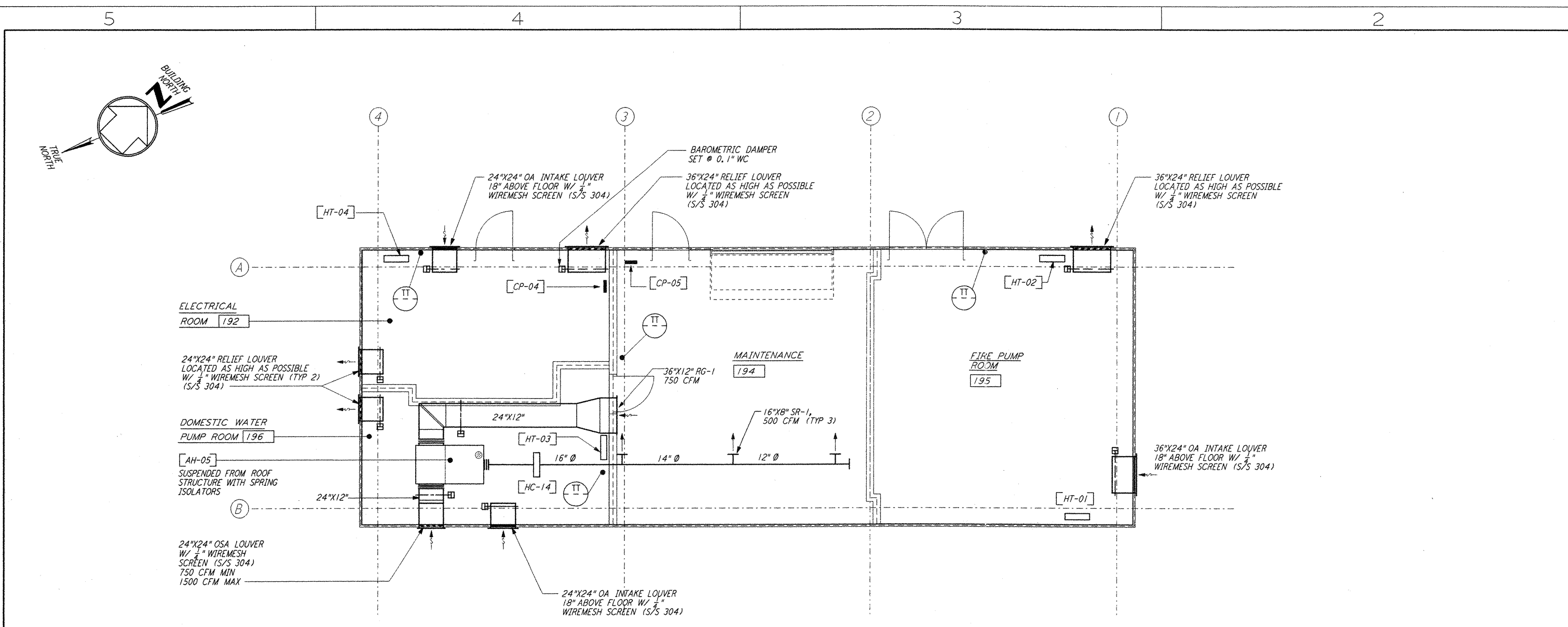


not be reproduced, copied, loaned, exhibited, or used in any other way, except by written consent from PARSONS to the borrower.

This document and the design it covers are the property of PARSONS. They are loaned only with the borrower's expressed written agreement that they will



MAINTENANCE BUILDING FLOOR PLAN
1/4" = 1'-0"

NOTES:

1. FOR LEGEND, ABBREVIATIONS AND GENERAL NOTES SEE SHEETS LA-H-001 AND LA-H-002.

SEQUENCE OF OPERATION:

MAINTENANCE ROOM:

UPON A SIGNAL FROM THE CENTRAL CONTROL SYSTEM THE AIR HANDLING UNIT (AH-05) SHALL START. THE DDC CONTROL SHALL PERFORM THE FOLLOWING:

- A. THE DDC CONTROLS SHALL MODULATE THE CONTROL DAMPERS ON THE OUTSIDE AIR AND THE RETURN AIR DUCTS TO MAINTAIN THE ROOM TEMPERATURE AT 72°F AND MAINTAIN 750 CFM OF OUTSIDE AIR MINIMUM.
- B. WHEN THE ROOM TEMPERATURE DROPS BELOW 68°F THE DDC CONTROL SHALL ACTIVATE THE ELECTRIC DUCT HEATER (HC-14) TO MAINTAIN THE ROOM AT 68°F.
- C. AFTER BUSINESS HOURS THE DDC CONTROLS SHALL CLOSE OFF THE OUTSIDE AIR DAMPER AND FULLY OPEN THE RETURN AIR DAMPER AND MAINTAIN THE ROOM TEMPERATURE AT 65°F.
- D. IF THE ROOM TEMPERATURE DROPS BELOW 50°F, THE DDC CONTROLS SHALL REPORT AN ALARM SIGNAL TO FACILITY CONTROL AND MONITORING SYSTEM AT THE CORNER STATION.

FIRE PUMP ROOM:

- A. THE PACKAGED CONTROLS ON THE ELECTRIC CONVECTOR SHALL MAINTAIN THE ROOM TEMPERATURE AT 60°F.
- B. IF THE ROOM TEMPERATURE RISES ABOVE 104°F THE DDC CONTROLS SHALL OPEN THE GRAVITY VENTILATION DAMPERS. THE GRAVITY VENTILATION DAMPERS SHALL CLOSE WHEN THE ROOM TEMPERATURE DROPS BELOW 95°F.
- C. IF THE ROOM TEMPERATURE RISES TO 110°F OR DROPS BELOW 50°F, THE DDC CONTROLS SHALL REPORT AN ALARM SIGNAL TO FACILITY CONTROL AND MONITORING SYSTEM AT THE CORNER STATION.

DOMESTIC WATER PUMP ROOM:

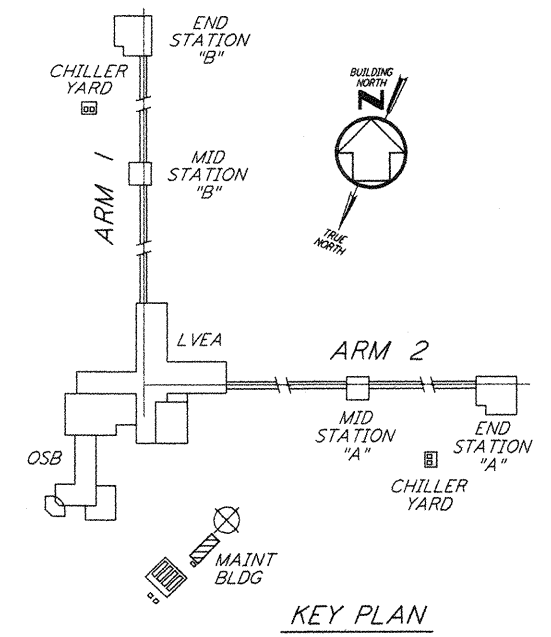
SAME AS FIRE PUMP ROOM.

ELECTRICAL ROOM:

SAME AS FIRE PUMP ROOM.

INPUT/OUTPUT SUMMARY FOR MAINTENANCE BUILDING

| SYSTEM, APPARATUS, OR AREA POINT DESCRIPTION | INPUTS | | OUTPUTS | | SYSTEM FEATURES | | | | | | | GENERAL | SUPPLEMENTARY NOTES | | |
|--|----------|------------|---------|---------|-----------------|--------|-----------------|-----------------|-----------|---------|-------------------|---------|---------------------|-----------------|----------------------------|
| | ANALOG | | BINARY | DIGITAL | ANALOG | ALARMS | PROGRAMS | | | GENERAL | | | | | |
| | MEASURED | CALCULATED | | | | | TIME SCHEDULING | DEMAND LIMITING | DOT CYCLE | | START/STOP OPTION | | | ENTRANCE OPTION | SMOKE CNT |
| AIR HANDLING UNIT, AH-05 | | | | | | | | | | | | | | | PROVIDE NIGHT TIME SETBACK |
| HEATING COIL, HC-14 | • | | | | | | | | | | | | | | |
| CONNECTOR, HT-01 | | | | | | | | | | | | | | | |
| CONNECTOR, HT-02 | | | | | | | | | | | | | | | |
| CONNECTOR, HT-03 | | | | | | | | | | | | | | | |
| CONNECTOR, HT-04 | | | | | | | | | | | | | | | |
| ROOM TEMPERATURE (1795) | | | | | | | | | | | | | | | |
| ROOM TEMPERATURE (1794) | | | | | | | | | | | | | | | |
| ROOM TEMPERATURE (1796) | | | | | | | | | | | | | | | |
| ROOM TEMPERATURE (1792) | | | | | | | | | | | | | | | |
| GRAVITY DAMPERS (RM 1795) | | | | | | | | | | | | | | | |
| GRAVITY DAMPERS (RM 1796) | | | | | | | | | | | | | | | |
| GRAVITY DAMPERS (RM 1792) | | | | | | | | | | | | | | | |
| FLOOR PLAN | | | | | | | | | | | | | | | |



0 4 8 12 16 FT
1/4" = 1'-0"

| REFERENCES | | REVISIONS | | ISSUED FOR AS-BUILT | | | | |
|-------------|-------------|-----------|--------|---------------------|------|------|------|---------------------|
| DRAWING NO. | DESCRIPTION | NO. | DATE | BY | CHGK | ENGR | PROJ | DESCRIPTION |
| | | 1 | 8-7-98 | DJB | AA | AA | WLL | ISSUED FOR AS-BUILT |

| ISSUED FOR CONSTRUCTION | | |
|-------------------------|-----|----------|
| DRAWN | CLP | 11-15-96 |
| CHECKED | MM | 10-25-96 |
| ENGINEER | AA | 1-23-96 |
| PROJ | TDM | 11-15-96 |
| AS-BUILT DRAWINGS | | |

PARSONS
100 WEST WALNUT STREET
PASADENA, CALIFORNIA

LIGO
CALIFORNIA INSTITUTE OF TECHNOLOGY
MASSACHUSETTS INSTITUTE OF TECHNOLOGY

LIGO-D960972-01-0
LASER INTERFEROMETER
GRAVITATIONAL-WAVE OBSERVATORY
SITE NO. 2 - LIVINGSTON, LOUISIANA

| | | | |
|-----------------|----------|-----------------|----------------|
| TITLE | SCALE | CONTRACT NUMBER | PROJECT NUMBER |
| AS NOTED | PP150969 | 8094 | |
| SHEET NUMBER | | | REVISED |
| LA-H-116 | | | |