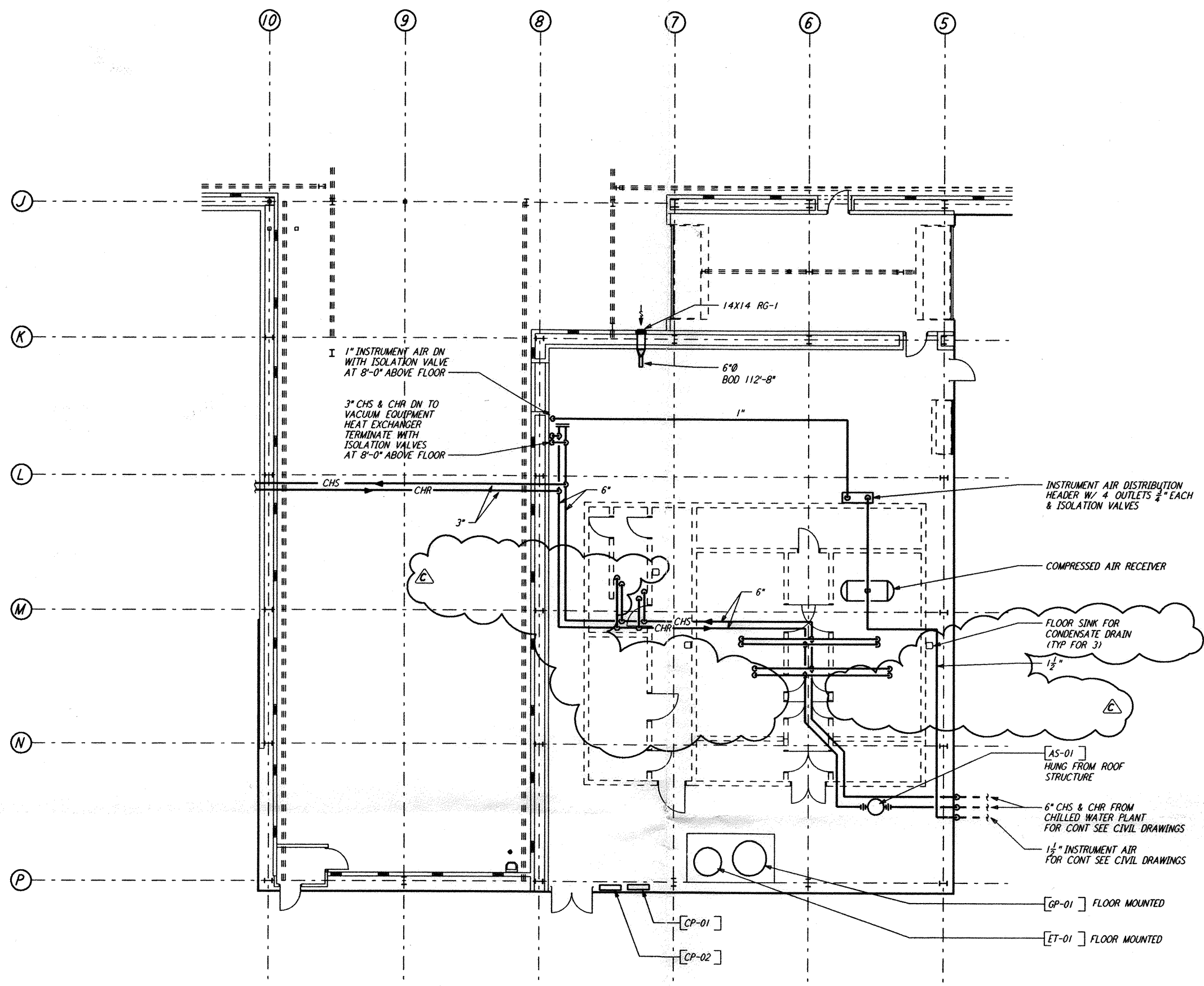
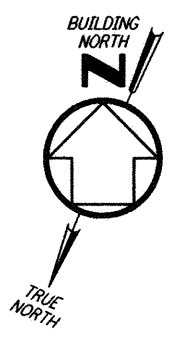
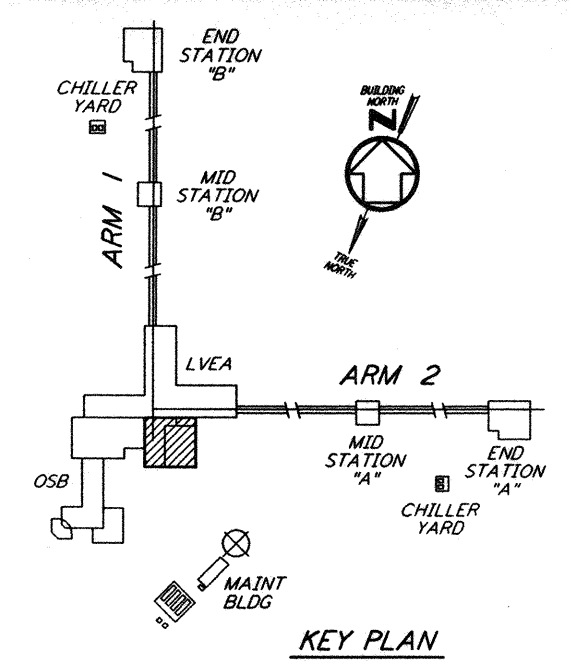


NOTES:
 1. FOR LEGEND, ABBREVIATIONS AND GENERAL NOTES SEE SHEETS
 LA-H-001 AND LA-H-002.



MECHANICAL ROOM PIPING PLAN
 1/8" = 1'-0"



0 8 16 24 32 FT
 1/8" = 1'-0"

Tue Sep 10 09:37:53 1996 s3-v18b2 J:\PLOTS\QUEUES\18B2\MU17A.PRF
 This document and the design it covers are the property of PARSONS. They are loaned only with the borrower's expressed written agreement that they will not be reproduced, copied, loaned, exhibited, or used in any other way, except by written consent from PARSONS to the borrower.

NO.	DATE	BY	CHKD	ENGR	PROJ	DESCRIPTION
C	9-10-96	CLP	AA	TDM		BID ADDENDUM #2
B	7-24-96	CLP	ME	AA	TDM	ISSUED FOR BID
A	6-14-96	CLP	ME	AA	TDM	FINAL DESIGN REVIEW

DRAWN	CLP
CHECKED	
ENGINEER	
PROJ	

PARSONS
 100 WEST WALNUT STREET
 PASADENA, CALIFORNIA

LIGO
 CALIFORNIA INSTITUTE OF TECHNOLOGY
 MASSACHUSETTS INSTITUTE OF TECHNOLOGY

LASER INTERFEROMETER
 GRAVITATIONAL-WAVE OBSERVATORY
 SITE NO. 2 - LIVINGSTON, LOUISIANA

TITLE	SCALE	CONTRACT NUMBER	PROJECT NUMBER
HVAC CORNER STATION LVEA & OSB MECHANICAL ROOM PIPING PLAN	AS NOTED	PP150969	8094
SHEET NUMBER		REVISION	
LA-H-117			

LIGO-D960973-C-0

LIGOLAF3.BOR