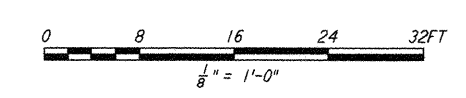
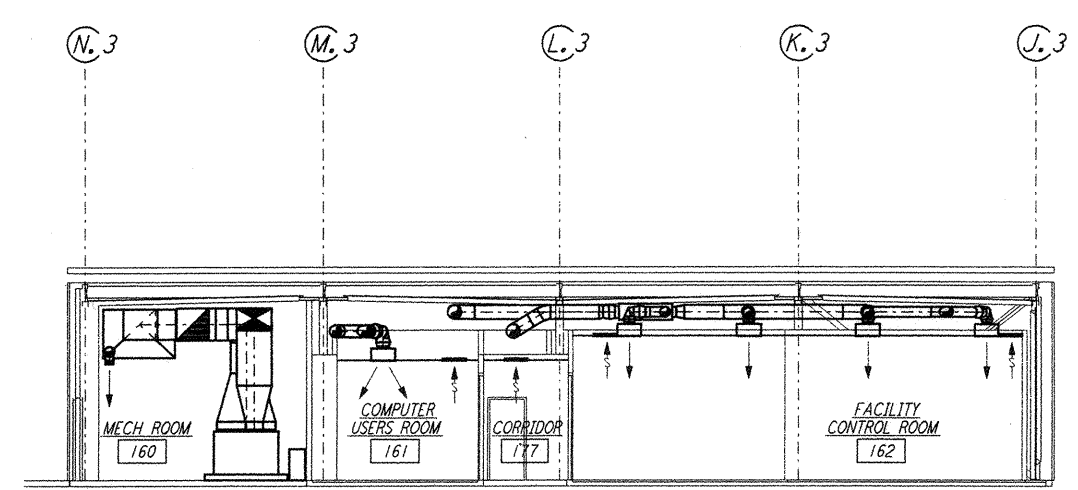
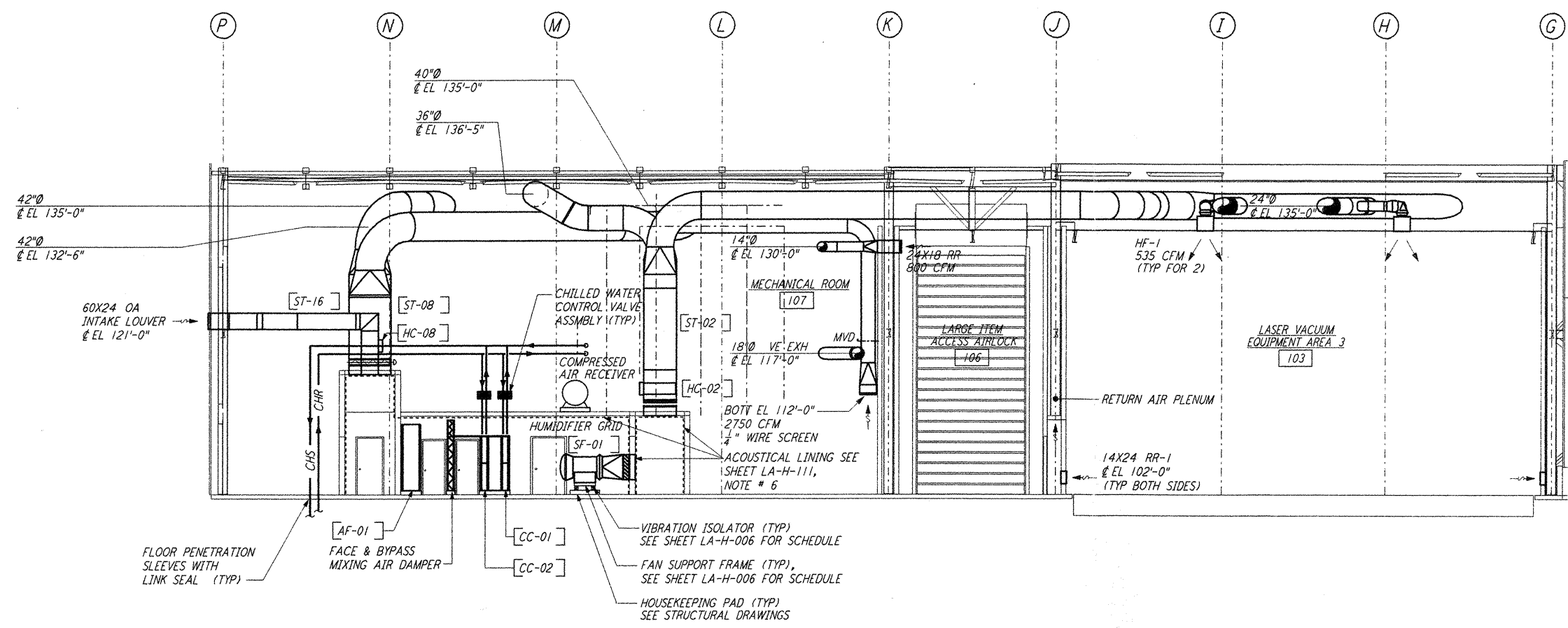


- NOTES:**
1. FOR LEGEND, ABBREVIATIONS AND GENERAL NOTES SEE SHEET LA-H-001 AND LA-H-002.
 2. SEE SHEET LA-H-151 FOR APPLICABLE NOTES.
 3. PERFORATED DUCT LINER INSIDE THE SUPPLY AIR PLENUM OF AH-01 AND AH-02 WILL BE CORRUGATED TYPE.



not be reproduced, copied, loaned, exhibited, or used in any other way, except by written consent from PARSONS to the borrower.

This document and the design it covers are the property of PARSONS. They are loaned only with the borrower's expressed written agreement that they will

NO.	DATE	BY	CHKD	ENGR	PROJ	DESCRIPTION
1	8-7-98	DJB	AA	AA		ISSUED FOR AS-BUILT

ISSUED FOR CONSTRUCTION
 DRAWN CLP 11-15-98
 CHECKED MN 10-25-98
 ENGINEER AA 1-23-98
 PROJ TDM 11-15-98

AS-BUILT DRAWINGS

PARSONS
 100 WEST WALNUT STREET
 PASADENA, CALIFORNIA

LIGO
 CALIFORNIA INSTITUTE OF TECHNOLOGY
 MASSACHUSETTS INSTITUTE OF TECHNOLOGY

LIGO-D960980-01-O
 LASER INTERFEROMETER
 GRAVITATIONAL-WAVE OBSERVATORY
 SITE NO. 2 - LIVINGSTON, LOUISIANA

TITLE: HVAC CORNER STATION SECTIONS SHEET 2

SCALE: AS NOTED
 CONTRACT NUMBER: PPI50969
 PROJECT NUMBER: 8094

SHEET NUMBER: **LA-H-152**