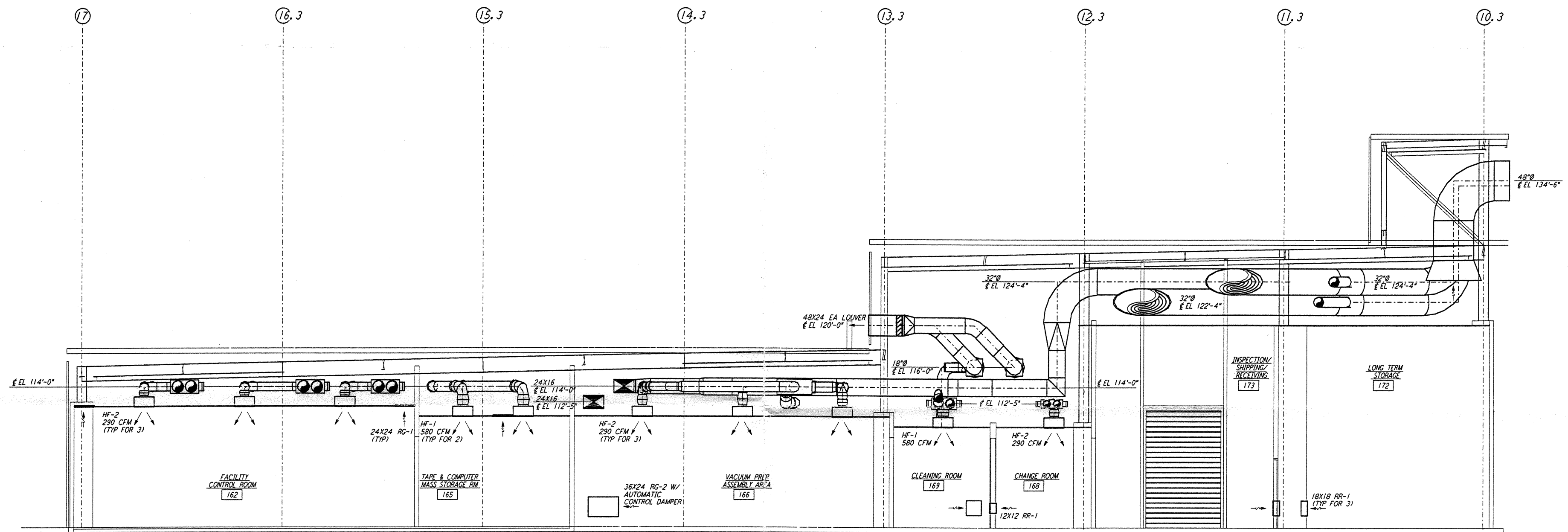
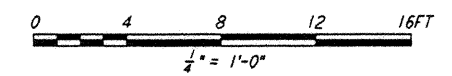


NOTES:

1. FOR LEGEND, ABBREVIATIONS AND GENERAL NOTES SEE SHEETS LA-H-001 AND LA-H-002.
2. SEE FLOOR PLAN NOTES FOR DUCT INSULATION.



SECTION **D** REF
 1/4" = 1'-0" LA-H-153 LA-H-113



LIGO-D960981-A-0

NO.	DATE	BY	CHKD	ENGR	PROJ	DESCRIPTION
A	6-14-96	CLP	DD	DD	DD	FINAL DESIGN REVIEW

DRAWN	CLP
CHECKED	
ENGINEER	
PROJ	

PARSONS
 100 WEST WALNUT STREET
 PASADENA, CALIFORNIA

LIGO
 CALIFORNIA INSTITUTE OF TECHNOLOGY
 MASSACHUSETTS INSTITUTE OF TECHNOLOGY

LASER INTERFEROMETER
 GRAVITATIONAL-WAVE OBSERVATORY
 SITE NO. 2 - LIVINGSTON, LOUISIANA

TITLE: HVAC CORNER STATION SECTIONS SHEET 3

SCALE: AS NOTED
 CONTRACT NUMBER: PP150969
 PROJECT NUMBER: 8094

SHEET NUMBER: **LA-H-153**

This document and the design it covers are the property of PARSONS. They are loaned only with the borrower's expressed written agreement that they will not be reproduced, copied, loaned, exhibited, or used in any other way, except by written consent from PARSONS to the borrower.

JUN 13 11:27:01 1996 S:\D960981\REF\LA-H-153.DWG

JUN 13 11:27:01 1996 S:\D960981\REF\LA-H-153.DWG