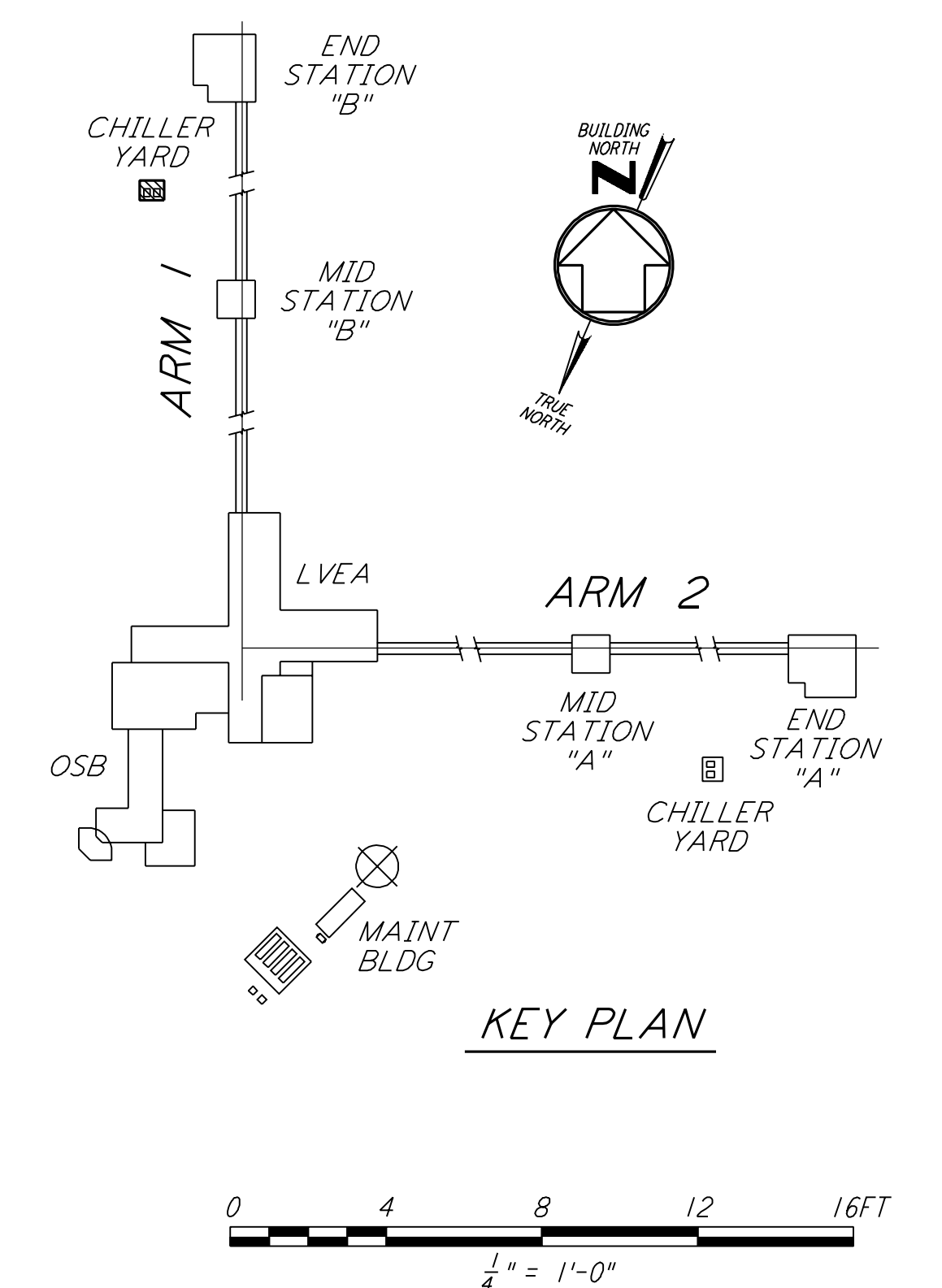
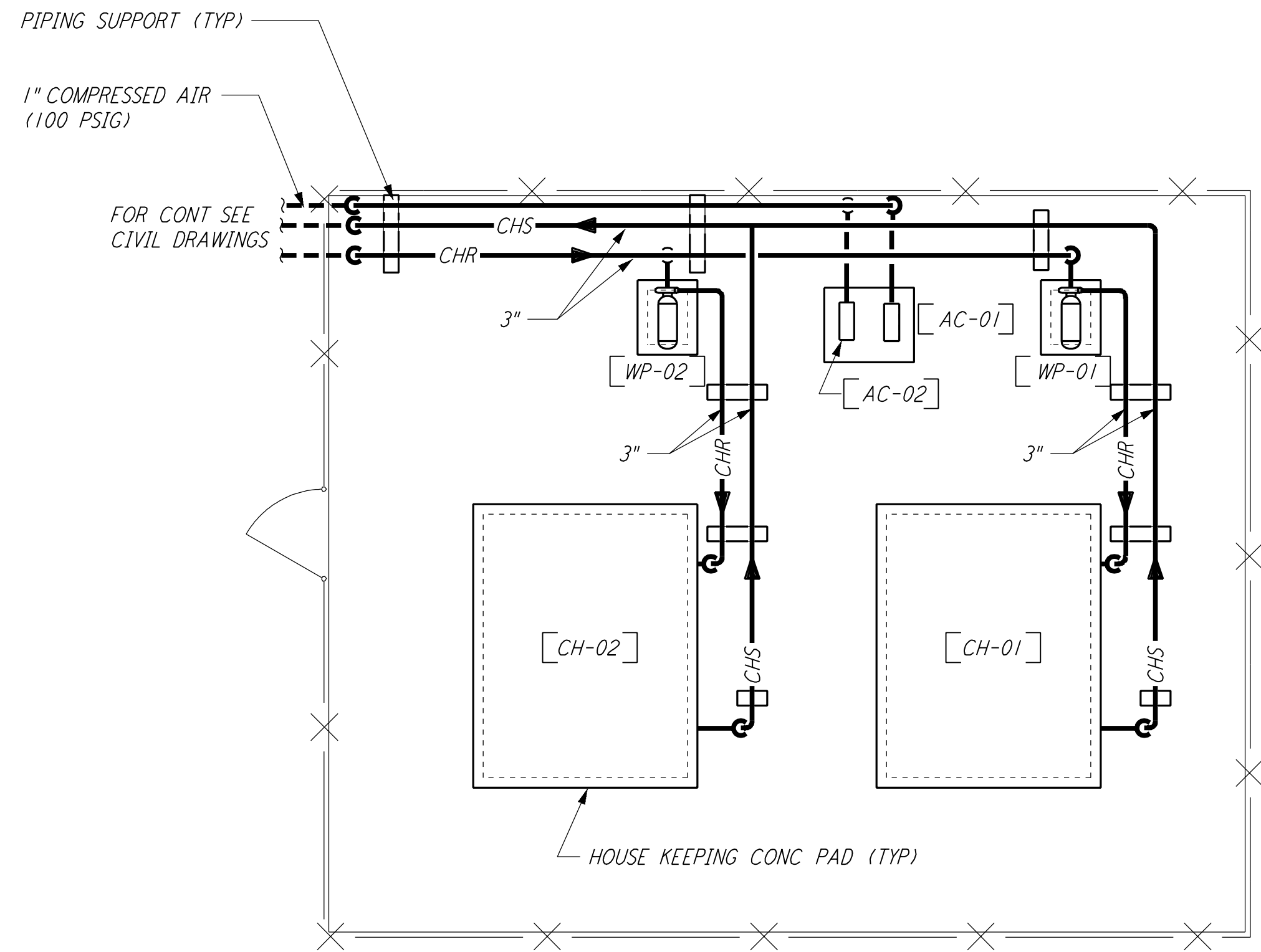


- NOTES:**
1. FOR LEGEND, ABBREVIATIONS AND GENERAL NOTES SEE SHEET LA-H-001 AND LA-H-002.
 2. MAINTAIN 6"-8" CLEAR HEIGHT UNDER PIPES, FOR PIPE SUPPORT DETAILS SEE STRUCTURAL DRAWING WA-5-407.
 3. PROVIDE FLOOR MOUNTED ELBOW SUPPORT AT THE PUMP SUCTION. CONTRACTOR MAY USE SUCTION DIFFUSER/STRAINER.
 4. REFER TO SPECIFICATIONS FOR PIPE SUPPORT REQUIREMENTS.
 5. SUPPORT PIPING TO ELIMINATE ANY LOADS TRANSMITTED FROM PIPING TO PUMPS AND CHILLERS.
 6. FOR PIPING FLOW DIAGRAM SEE SHEET LA-H-221.
 7. FOR CHILLERS AND PUMPS PIPING DETAILS SEE SHEETS LA-H-411 AND LA-H-412.
 8. FOR EXACT LOCATION OF THE CHILLERS AND PUMPS SEE CIVIL DRAWINGS.



END STATION "B" CHILLER YARD PLAN
 1/4" = 1'-0"

This document and the design it covers are the property of PARSONS. They are loaned only with the borrower's expressed written agreement that they will not be reproduced, copied, loaned, exhibited, or used in any other way, except by written consent from PARSONS to the borrower.

NO.	DATE	BY	CHKD	ENGR	PROJ	DESCRIPTION
1	8-7-98	DJB				ISSUED FOR AS-BUILT

ISSUED FOR CONSTRUCTION		
DRAWN	CLP	11-15-96
CHECKED	MN	10-25-96
ENGINEER	AA	1-23-96
PROJ	TDM	11-15-96
AS-BUILT DRAWINGS		

PARSONS
 100 WEST WALNUT STREET
 PASADENA, CALIFORNIA

LIGO
 CALIFORNIA INSTITUTE OF TECHNOLOGY
 MASSACHUSETTS INSTITUTE OF TECHNOLOGY

LASER INTERFEROMETER
 GRAVITATIONAL-WAVE OBSERVATORY
 SITE NO. 2 - LIVINGSTON, LOUISIANA

**HVAC
 END STATION "B"
 CHILLER YARD PLAN**

SCALE: AS NOTED
 SHEET NUMBER: **LA-H-214**

CONTRACT NUMBER: PP150969
 PROJECT NUMBER: 8094

LIGO-D960985-01-O