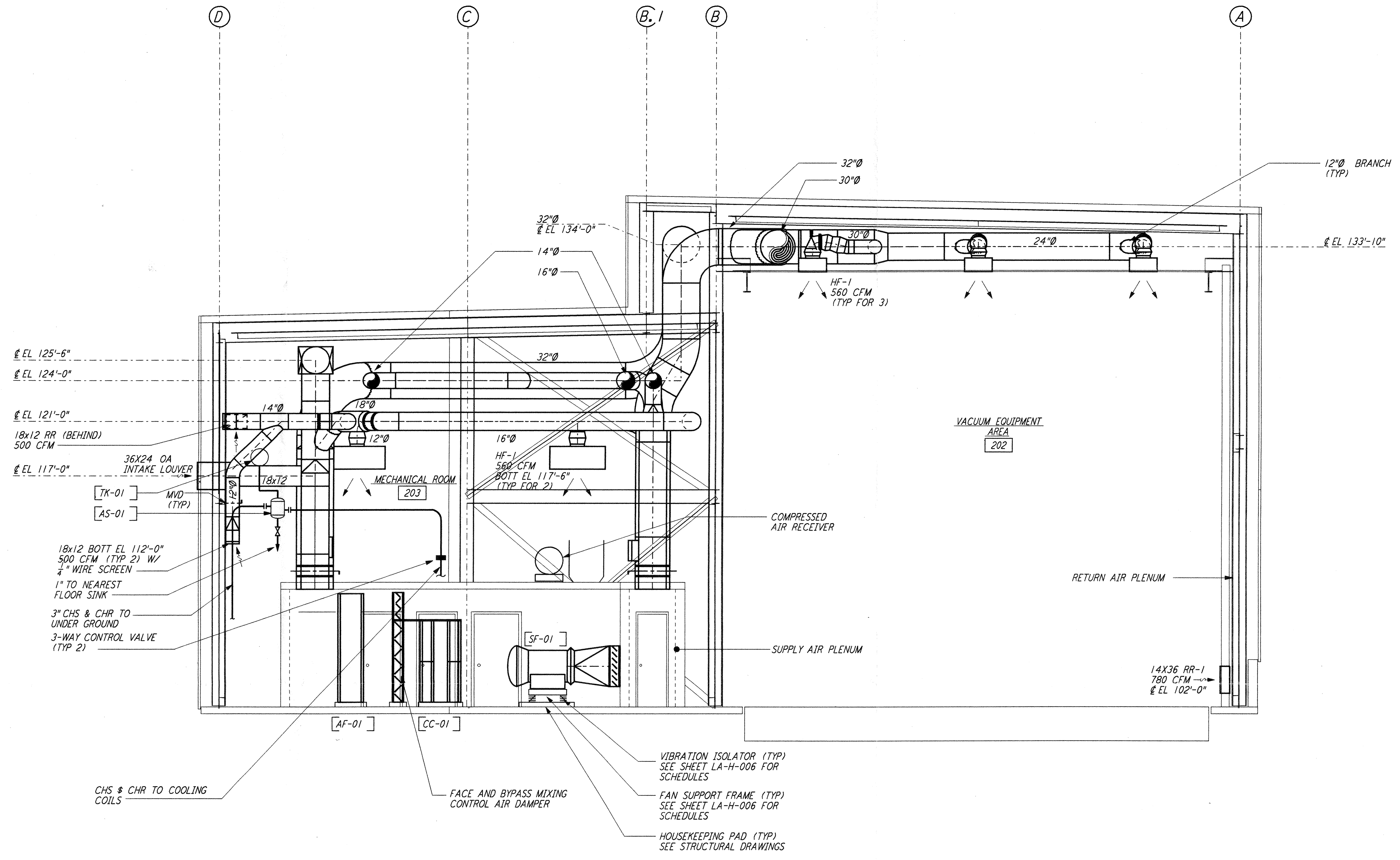


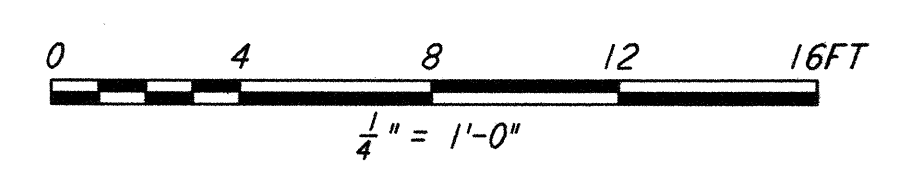
not be reproduced, copied, loaned, exhibited, or used in any other way, except by written consent from PARSONS to the borrower.

This document and the design it covers are the property of PARSONS. They are loaned only with the borrower's expressed written agreement that they will

- NOTES:**
1. FOR LEGEND, ABBREVIATIONS AND GENERAL NOTES SEE SHEETS LA-H-001 AND LA-H-002.
 2. PROVIDE HIGH PRESSURE FLEX CONNECTIONS AT THE POINT OF CONNECTION OF DUCTS AND THE AIR HANDLING UNITS.
 3. SEE FLOOR PLANS FOR DUCT INSULATION NOTES.
 4. LOCATE ROOM TEMPERATURE SENSOR/TRANSMITTER FOR THE MECHANICAL ROOM AT 4'-6" ABOVE FINISHED FLOOR LEVEL.
 5. WHERE PIPES PENETRATE FLOOR SLAB, PROVIDE STEEL SLEEVE AND LINK SEAL.



SECTION A
 REF: LA-H-241, LA-H-211
 1/4" = 1'-0"



DRAWING NO.	DESCRIPTION	NO.	DATE	BY	CHKD	ENGR	PROJ	DESCRIPTION
		1	8-7-98	DJB	AA	AA	WJW	ISSUED FOR AS-BUILT

ISSUED FOR CONSTRUCTION
 DRAWN: CLP 11-15-96
 CHECKED: MV 10-25-96
 ENGINEER: AA 1-23-96
 PROJ: TDM 11-15-96

AS-BUILT DRAWINGS

PARSONS
 100 WEST WALNUT STREET
 PASADENA, CALIFORNIA

LIGO
 CALIFORNIA INSTITUTE OF TECHNOLOGY
 MASSACHUSETTS INSTITUTE OF TECHNOLOGY

LIGO-D960990-01-0
 LASER INTERFEROMETER
 GRAVITATIONAL-WAVE OBSERVATORY
 SITE NO.2 - LIVINGSTON, LOUISIANA

HVAC
 END STATION
 SECTIONS SHEET 1

SCALE: AS NOTED
 CONTRACT NUMBER: PPI50969
 PROJECT NUMBER: 8094
LA-H-241