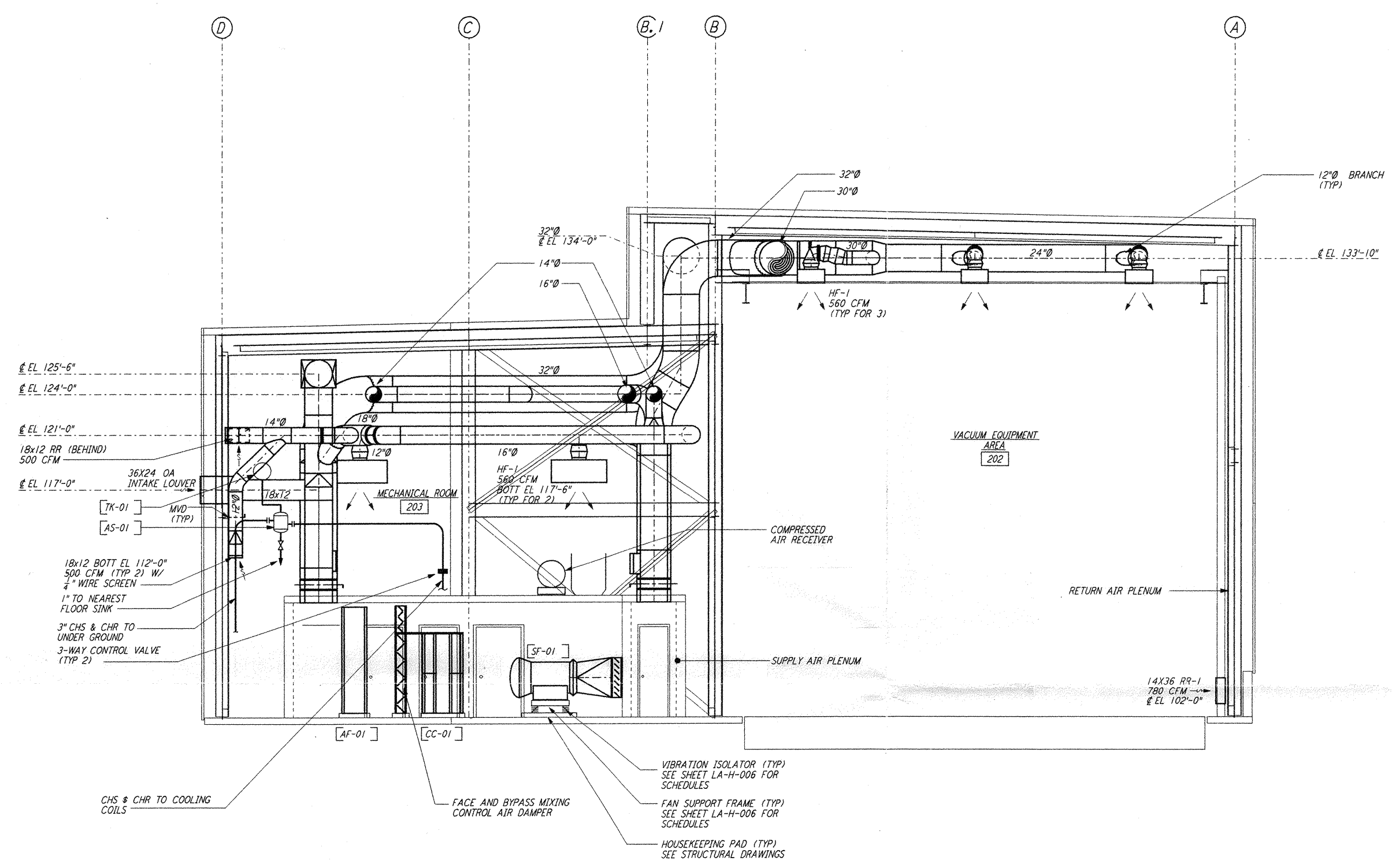
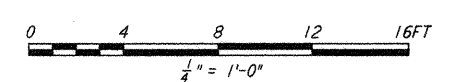


**NOTES:**

1. FOR LEGEND, ABBREVIATIONS AND GENERAL NOTES SEE SHEETS LA-H-001 AND LA-H-002.
2. PROVIDE HIGH PRESSURE FLEX CONNECTIONS AT THE POINT OF CONNECTION OF DUCTS AND THE AIR HANDLING UNITS.
3. SEE FLOOR PLANS FOR DUCT INSULATION NOTES.
4. LOCATE ROOM TEMPERATURE SENSOR/TRANSMITTER FOR THE MECHANICAL ROOM AT 4'-6" ABOVE FINISHED FLOOR LEVEL.
5. WHERE PIPES PENETRATE FLOOR SLAB, PROVIDE STEEL SLEEVE AND LINK SEAL.



**SECTION A**  
 1/4" = 1'-0" REF  
 LA-H-241 LA-H-211



**LIGO-D960990-01-0**

LASER INTERFEROMETER  
 GRAVITATIONAL-WAVE OBSERVATORY  
 SITE NO. 2 - LIVINGSTON, LOUISIANA

TITLE: HVAC  
 END STATION  
 SECTIONS SHEET 1

AS NOTED PPI50969 8094

**LA-H-241**

100 WEST WALNUT STREET  
 PASADENA, CALIFORNIA

CALIFORNIA INSTITUTE OF TECHNOLOGY  
 MASSACHUSETTS INSTITUTE OF TECHNOLOGY

ISSUED FOR CONSTRUCTION	
DRAWN	CLP 11-15-96
CHECKED	MN 10-25-96
ENGINEER	AA 1-23-96
PROJ	TDM 11-15-96
<b>AS-BUILT DRAWINGS</b>	

NO.	DATE	BY	CHKD	ENGR	PROJ	DESCRIPTION
1	8-7-98	DJB	AA	AA	WJA	ISSUED FOR AS-BUILT

not be reproduced, copied, loaned, exhibited, or used in any other way, except by written consent from PARSONS to the borrower.

This document and the design it covers are the property of PARSONS. They are loaned only with the borrower's expressed written agreement that they will

Sun Aug 17 13:32:32 1998 G:\PLOT\QUE\33-V\9862.DWG 52085 K:\V\9862\m241.dwg L160LAF.3.BDR