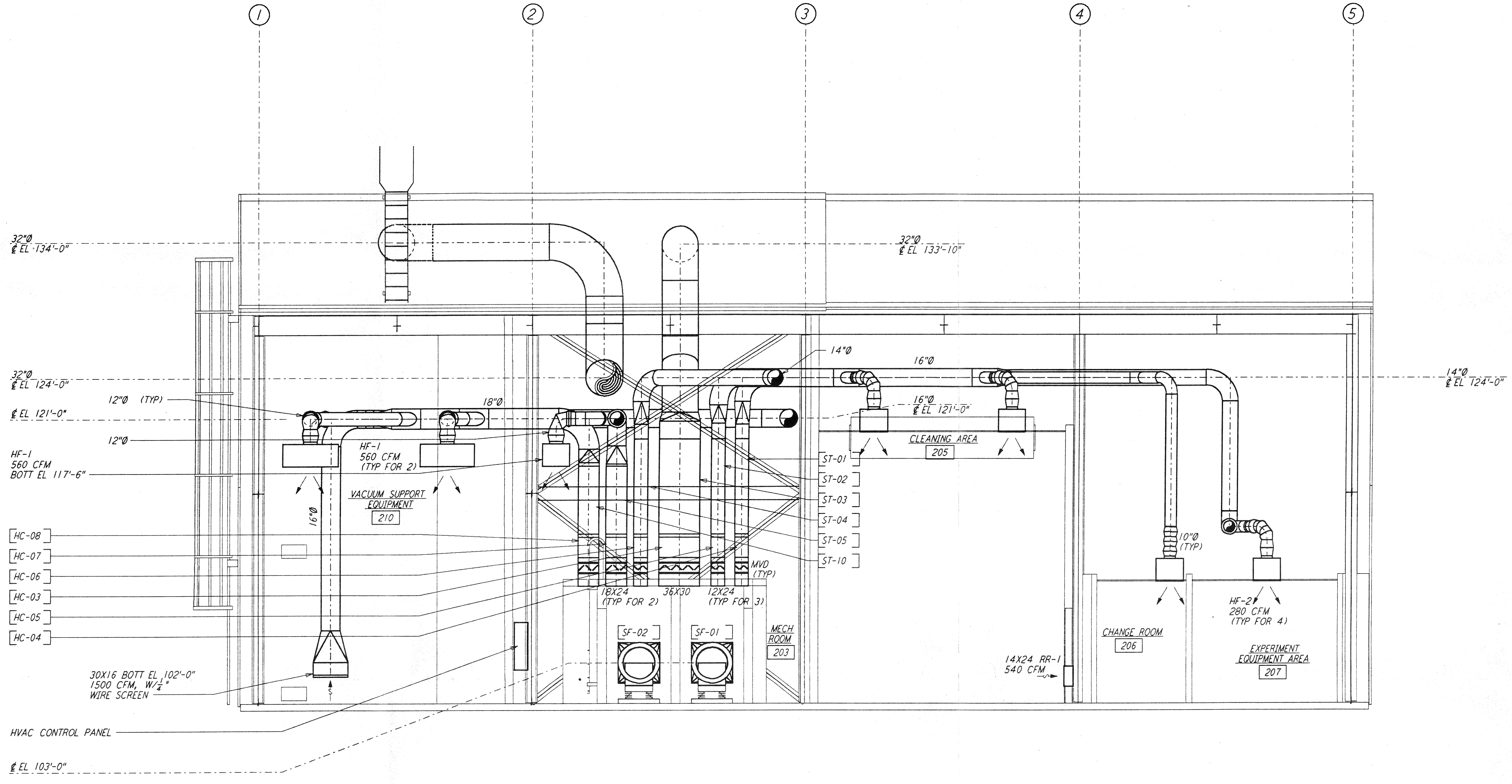
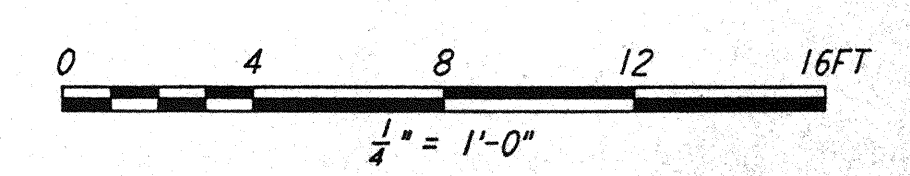


**NOTES:**  
 1. FOR LEGEND, ABBREVIATIONS AND GENERAL NOTES SEE SHEETS  
 LA-H-001 AND LA-H-002.



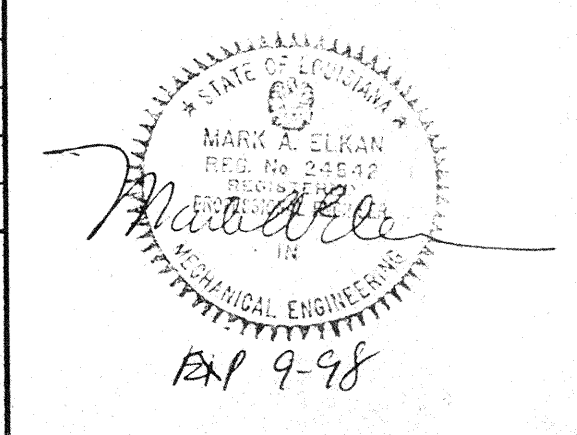
SECTION **B** REF  
 1/4" = 1'-0" LA-H-242 LA-H-211



This document and the design it covers are the property of PARSONS. They are loaned only with the borrower's expressed written agreement that they will not be reproduced, copied, loaned, exhibited, or used in any other way, except by written consent from PARSONS to the borrower.

DRAWING NO.	DESCRIPTION	NO.	DATE	BY	CHKD	ENGR	PROJ	DESCRIPTION

ISSUED FOR CONSTRUCTION			
DRAWN	CLP	11-15-96	
CHECKED	MS	10-25-96	
ENGINEER	AA	10-23-96	
PROJ		11/15/96	



**PARSONS**  
 100 WEST WALNUT STREET  
 PASADENA, CALIFORNIA

**LIGO**  
 CALIFORNIA INSTITUTE OF TECHNOLOGY  
 MASSACHUSETTS INSTITUTE OF TECHNOLOGY

LASER INTERFEROMETER  
 GRAVITATIONAL-WAVE OBSERVATORY  
 SITE NO. 2 - LIVINGSTON, LOUISIANA

SCALE	CONTRACT NUMBER	PROJECT NUMBER
AS NOTED	PP150969	8094
SHEET NUMBER		REVISIONS
<b>LA-H-242</b>		