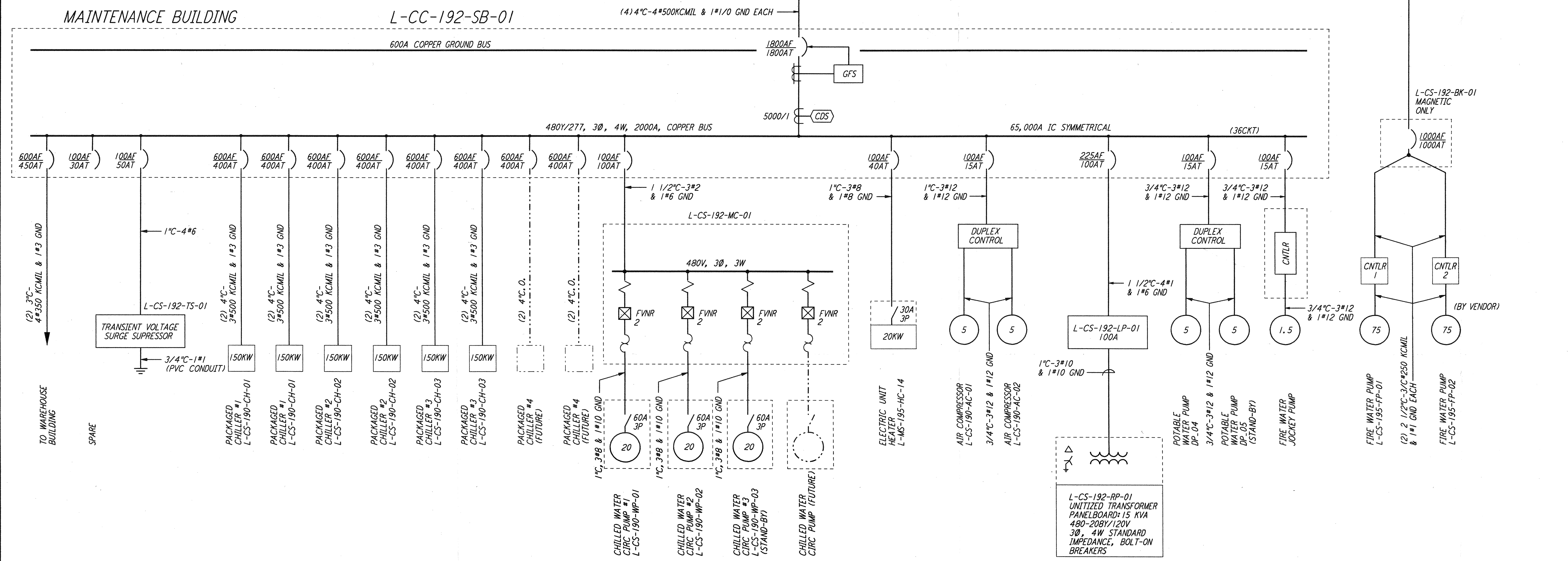
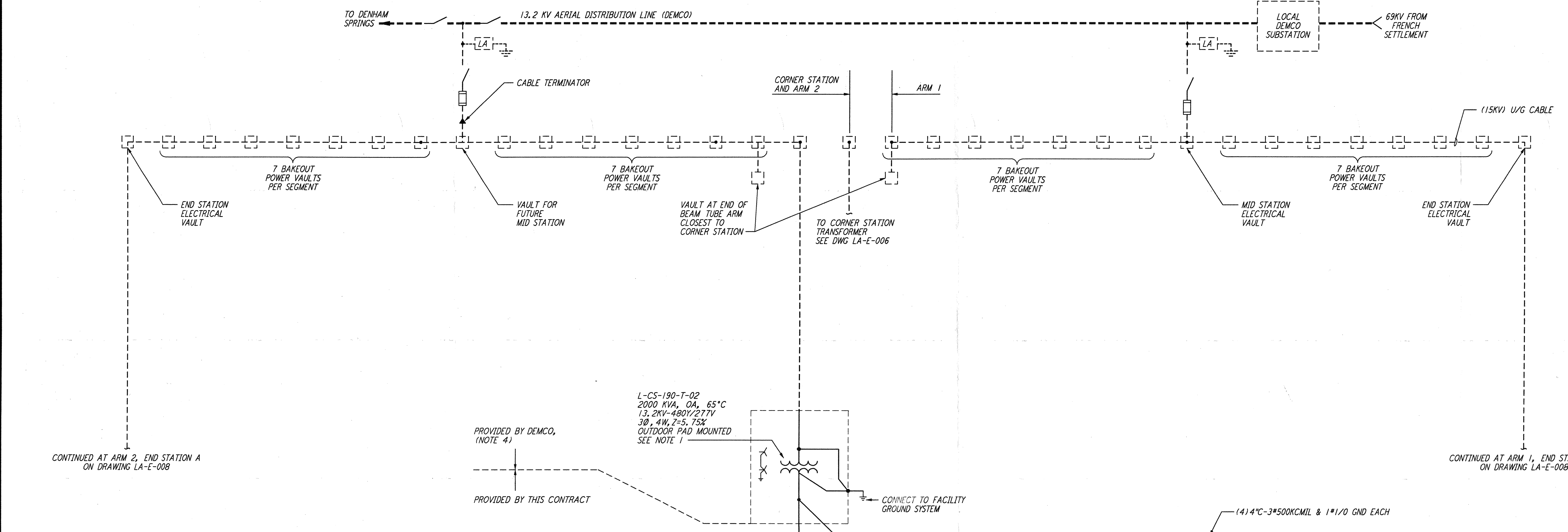


NOTES:

1. TRANSFORMER L-CS-190-T-02 SHALL BE SIZED PER N.E.C. ARTICLE 450-3D.
2. FOR ABBREVIATIONS AND ACRONYMS SEE DWG LA-E-004.
3. FOR ONE-LINE DIAGRAMS SYMBOLS SEE DWG LA-E-004.
4. ALL 13.2KV CABLE, GEAR, VAULTS AND TRANSFORMERS BY DEMCO.
5. ALL CIRCUIT BREAKERS SHALL BE PROVIDED WITH LOCKING/LOCKABLE ACCESSORIES TO ENSURE THAT CIRCUITS ARE ENERGIZED BY AUTHORIZED PERSONNEL ONLY.
6. DISTRIBUTION AND LIGHTING PANELS SHALL BE FURNISHED WITH LOCKABLE DOORS. CIRCUIT BREAKERS SHALL BE PROVIDED WITH LOCKING/LOCKABLE ACCESSORIES TO ENSURE THAT CIRCUITS ARE ENERGIZED BY AUTHORIZED PERSONNEL ONLY.

LEGEND:

- L - EA - 303 - DP - 01
- SEQUENTIAL NUMBER
- BK = BREAKER PANEL
- CB = CIRCUIT BREAKER
- DP = DISTRIBUTION PANEL
- HP = HEATER PANEL
- LP = LIGHTING PANEL
- MC = MOTOR CONTROL CENTER
- PD = POWER DISTRIBUTION
- RP = RECEPTACLE PANEL
- SB = SWITCHBOARD
- SG = SWITCHGEAR
- T = TRANSFORMER
- TS = TRANSIENT VOLTAGE SURGE SUPPRESSOR
- ROOM NO. (PANEL LOCATION)
- A = NORTH OF LVEA
- B = WEST OF LVEA
- E = END STATION
- M = MID STATION
- MS = MAINTENANCE SHOP (BLDG.)
- CS = CORNER STATION
- LIVINGSTON
- THIN INTERMITTING DENOTES EQUIPMENT
- LONG BROKEN LINE DENOTES BY "DEMCO"
- FUTURE



any other way, except by written consent from PARSONS to the borrower.

of PARSONS. They are loaned only with the borrower's expressed written agreement that they will

LIGO-D960998-01-O

LASER INTERFEROMETER
 GRAVITATIONAL-WAVE OBSERVATORY
 SITE NO. 2 - LIVINGSTON, LOUISIANA

ISSUED FOR CONSTRUCTION	DATE	BY
DRAWN	M. M.	11-15-96
CHECKED	JCL	7-24-96
ENGINEER	KCR	10-25-96
PROJ	T. D. M.	11-15-96

AS-BUILT DRAWINGS



100 WEST WALNUT STREET
 PASADENA, CALIFORNIA



CALIFORNIA INSTITUTE OF TECHNOLOGY
 MASSACHUSETTS INSTITUTE OF TECHNOLOGY

TITLE	ELECTRICAL OVERALL SINGLE LINE DIAGRAM	SCALE	NONE	CONTRACT NUMBER	PP150969	PROJECT NUMBER	8094
SHEET NUMBER	LA-E-005	REVISIONS					

NO.	DATE	BY	CHKD	ENGR	PRD	DESCRIPTION
1	8-7-98	JE	DL	AW		ISSUED FOR AS-BUILT