

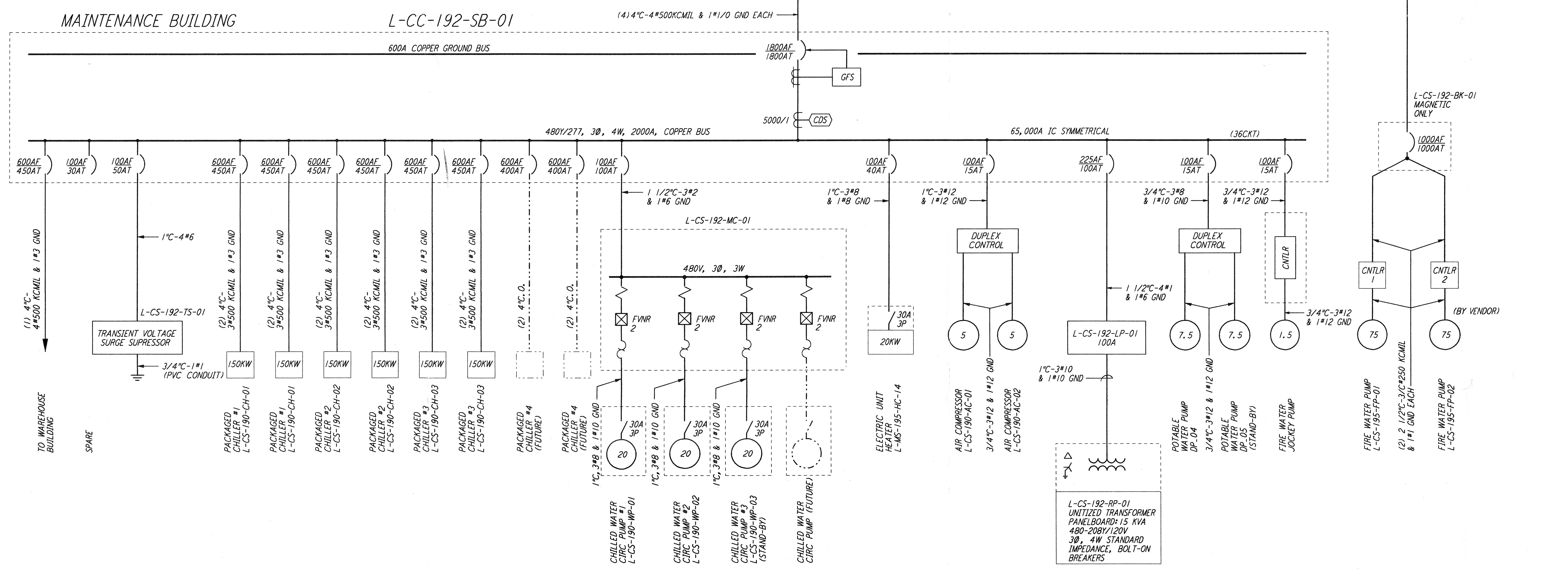
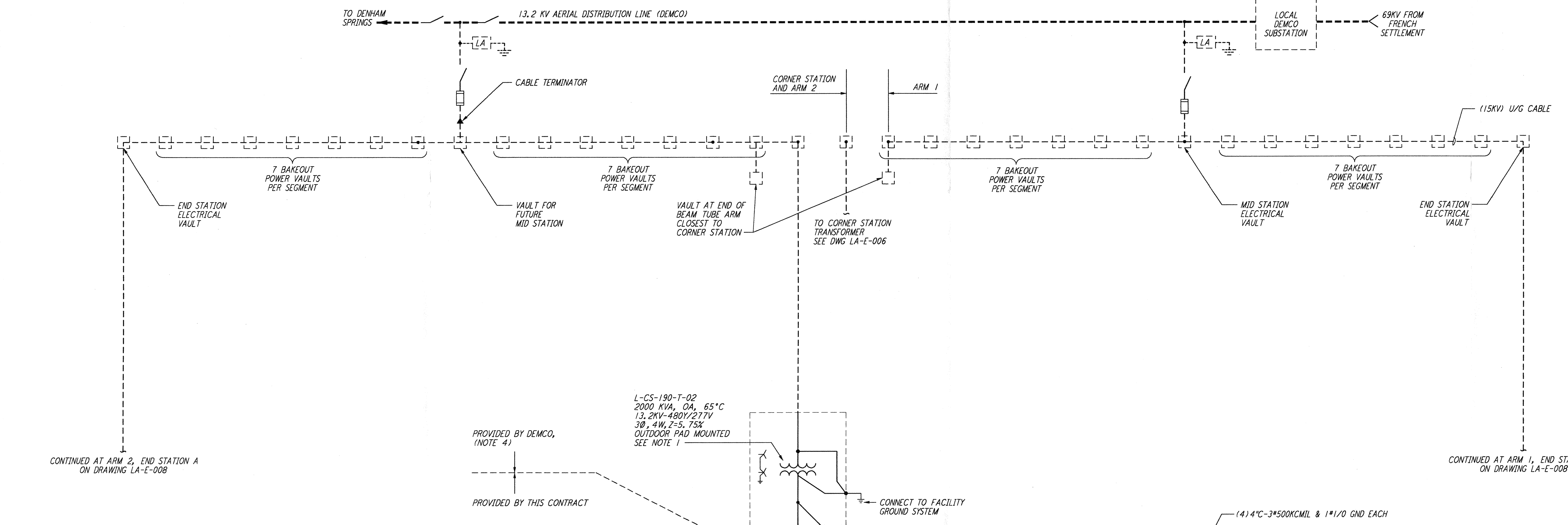
NOTES:

1. TRANSFORMER L-CS-190-T-02 SHALL BE SIZED PER N.E.C. ARTICLE 450-3D.
2. FOR ABBREVIATIONS AND ACRONYMS SEE DWG LA-E-001.
3. FOR ONE-LINE DIAGRAMS SYMBOLS SEE DWG LA-E-004.
4. ALL 13.2KV CABLE, GEAR, VAULTS AND TRANSFORMERS BY DEMCO.
5. ALL CIRCUIT BREAKERS SHALL BE PROVIDED WITH LOCKING/LOCKABLE ACCESSORIES TO ENSURE THAT CIRCUITS ARE ENERGIZED BY AUTHORIZED PERSONNEL ONLY.
6. DISTRIBUTION AND LIGHTING PANELS SHALL BE FURNISHED WITH LOCKABLE DOORS, CIRCUIT BREAKERS SHALL BE PROVIDED WITH LOCKING/LOCKABLE ACCESSORIES TO ENSURE THAT CIRCUITS ARE ENERGIZED BY AUTHORIZED PERSONNEL ONLY.

LEGEND:

- L - EA - 303 - DP - 01
- SEQUENTIAL NUMBER
 - BK = BREAKER PANEL
 - CB = CIRCUIT BREAKER
 - DP = DISTRIBUTION PANEL
 - HP = HEATER PANEL
 - LP = LIGHTING PANEL
 - MC = MOTOR CONTROL CENTER
 - PD = POWER DISTRIBUTION
 - RP = RECEPTACLE PANEL
 - SB = SWITCHBOARD
 - SG = SWITCHGEAR
 - T = TRANSFORMER
 - TS = TRANSIENT VOLTAGE SURGE SUPPRESSOR
 - ROOM NO. (PANEL LOCATION)
 - A = NORTH OF LVEA
 - B = WEST OF LVEA
 - E = END STATION
 - M = MID STATION
 - MS = MAINTENANCE SHOP (BLDG.)
 - CS = CORNER STATION
 - LIVINGSTON
- THIN INTERMITTING DENOTES EQUIPMENT
 - - - LONG BROKEN LINE DENOTES "DEMCO"
 - - - - - FUTURE

This document and the design it covers are the property of PARSONS. They are loaned only with the borrower's expressed written agreement that they will not be reproduced, copied, loaned, exhibited, or used in any other way, except by written consent from PARSONS to the borrower.



LIGO-D960998-02-O

LASER INTERFEROMETER
 GRAVITATIONAL-WAVE OBSERVATORY
 SITE NO.2 - LIVINGSTON, LOUISIANA

NO.	DATE	BY	CHKD	ENGR	PROJ.	DESCRIPTION
2	5-21-99	AO				ISSUED AS REVISED AS-BUILT
1	8-7-98	JE				ISSUED FOR AS-BUILT

NO.	DATE	BY	CHKD	ENGR	PROJ.	DESCRIPTION
1	8-7-98	JE				ISSUED FOR AS-BUILT

NO.	DATE	BY	CHKD	ENGR	PROJ.	DESCRIPTION
1	8-7-98	JE				ISSUED FOR AS-BUILT

NO.	DATE	BY	CHKD	ENGR	PROJ.	DESCRIPTION
1	8-7-98	JE				ISSUED FOR AS-BUILT

AS-BUILT DRAWINGS

ISSUED FOR CONSTRUCTION
 DRAWN M. M. 11-15-96
 CHECKED JCL 7-24-96
 ENGINEER KCR 10-25-96
 PROJ T. D. M. 11-15-96

PARSONS

100 WEST WALNUT STREET
 PASADENA, CALIFORNIA

LIGO

CALIFORNIA INSTITUTE OF TECHNOLOGY
 MASSACHUSETTS INSTITUTE OF TECHNOLOGY

ELECTRICAL OVERALL SINGLE LINE DIAGRAM

SCALE: NONE
 CONTRACT NUMBER: PPI50969
 PROJECT NUMBER: 8094

LA-E-005