

This document and the design it covers are the property of PARSONS. They are loaned only with the borrower's expressed written agreement that they will not be reproduced, copied, loaned, exhibited, or used in any other way, except by written consent from PARSONS to the borrower.

This document and the design it covers are the property of PARSONS. They are loaned only with the borrower's expressed written agreement that they will not be reproduced, copied, loaned, exhibited, or used in any other way, except by written consent from PARSONS to the borrower.

LEGEND:

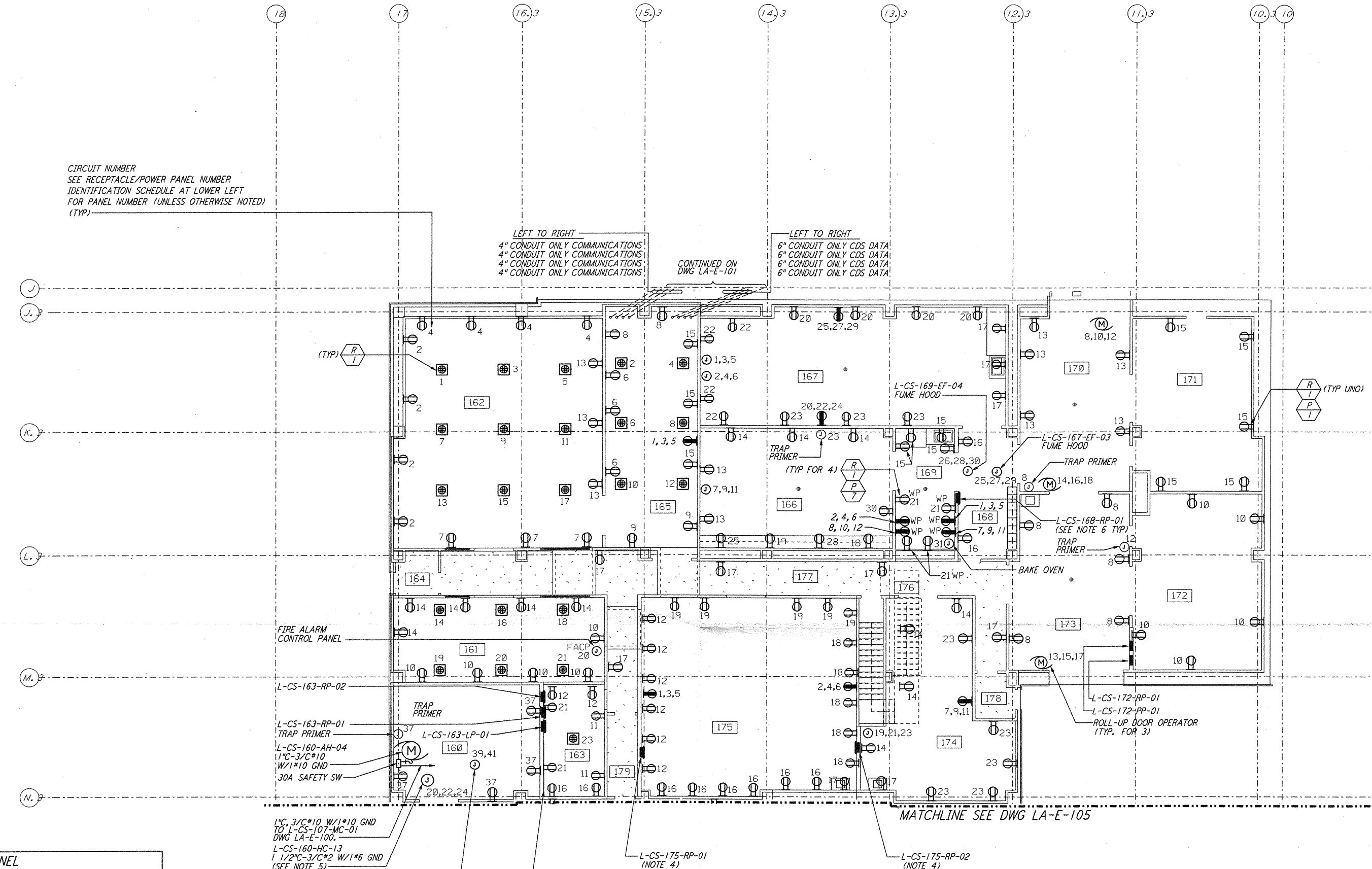
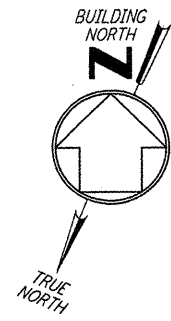
- WP RECEPTACLE, 208V, 3Ø, 5W, 4 POLE GROUNDING NEMA L21-3ØR HUBBELL #2810 WITH WEATHERPROOF BOX AND COVER
- RECEPTACLE, 208V, 3Ø, 5W, 4 POLE GROUNDING NEMA L21-3ØR HUBBELL #2810 WITH BOX AND COVER

NOTES:

- FOR ABBREVIATIONS AND ACRONYMS SEE DWG. LA-E-001.
- FOR SYMBOLS SEE DWG. LA-E-002.
- FOR GENERAL NOTES SEE DWG. LA-E-100.
- PANELS L-CS-175-RP-01 AND L-CS-175-RP-02 ARE RESERVED FOR CUSTOMER USE.
- NOT USED.
- FOR ALL PANEL FEEDER CONDUIT AND CABLE SIZES SEE SINGLE LINE DIAGRAM DWG LA-E-006. ROUTE CABLES IN CONCEALED CONDUIT TO L-CS-107-SB-01. FOR LOCATION SEE DWG LA-E-100.
- SEE PANEL SCHEDULES ON DWG LA-E-115 & LA-E-116 FOR GFCI CIRCUITS.

REFERENCE DRAWINGS:

- LA-E-109 COMMUNICATION RISER DIAGRAM
- LA-E-115 LIGHTING AND POWER PANEL SCHEDULES
- LA-E-116 LIGHTING AND POWER PANEL SCHEDULES



CIRCUIT NUMBER
SEE RECEPTACLE/POWER PANEL NUMBER
IDENTIFICATION SCHEDULE AT LOWER LEFT
FOR PANEL NUMBER (UNLESS OTHERWISE NOTED)
(TYP)

LEFT TO RIGHT
4" CONDUIT ONLY COMMUNICATIONS
4" CONDUIT ONLY COMMUNICATIONS
4" CONDUIT ONLY COMMUNICATIONS
4" CONDUIT ONLY COMMUNICATIONS

LEFT TO RIGHT
6" CONDUIT ONLY CDS DATA
6" CONDUIT ONLY CDS DATA
6" CONDUIT ONLY CDS DATA
6" CONDUIT ONLY CDS DATA

CONTINUED ON
DWG LA-E-101

MATCHLINE SEE DWG LA-E-105

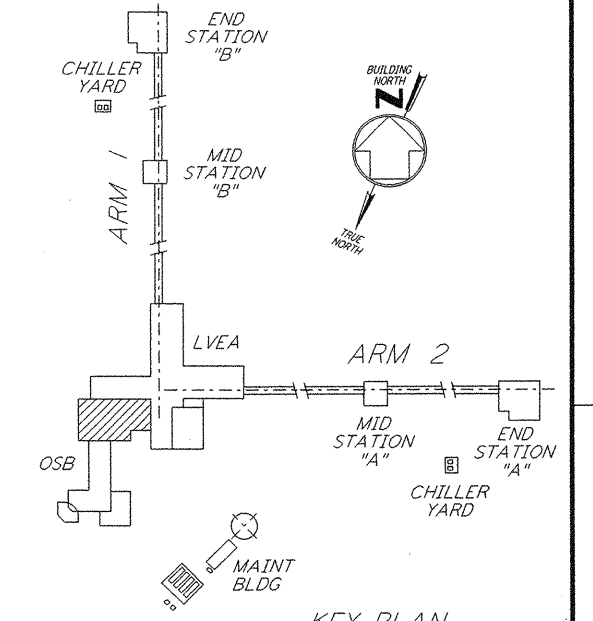
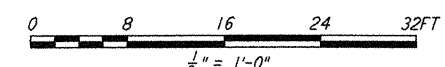
RECEPTACLE/POWER PANEL NUMBER IDENTIFICATION SCHEDULE (SEE NOTE 7)

ROOM NUMBER	PANEL NUMBER FOR DUPLEX RECEPTACLE	PANEL NUMBER FOR DUAL-DUPLEX RECEPTACLE	PANEL NUMBER FOR 3Ø, 5-POLE RECEPTACLE	PANEL NUMBER FOR JUNCTION BOX FOR ROLL-UP DOOR	PANEL NUMBER FOR POWER
160	L-CS-163-RP-01	---	---	L-CS-163-RP-01	---
161	L-CS-163-RP-01	L-CS-163-RP-02	---	L-CS-163-RP-01	---
162	L-CS-163-RP-01	L-CS-163-RP-02	---	---	---
163	L-CS-163-RP-01	L-CS-163-RP-02	---	---	---
164	---	---	---	---	---
165	L-CS-163-RP-01	L-CS-163-RP-02	L-CS-163-RP-01	---	---
166	L-CS-168-RP-01	---	---	L-CS-172-RP-01	---
167	L-CS-168-RP-01	---	L-CS-172-RP-01	L-CS-172-RP-01	---
168	L-CS-168-RP-01	---	---	---	---
169	L-CS-168-RP-01	---	L-CS-168-RP-01	L-CS-172-RP-01	---
170	L-CS-172-RP-01	---	---	---	L-CS-172-RP-01
171	L-CS-172-RP-01	---	---	---	---
172	L-CS-172-RP-01	---	---	---	---
173	L-CS-172-RP-01	---	---	---	L-CS-172-RP-01
174	L-CS-172-RP-01	---	L-CS-172-RP-01	L-CS-172-RP-01	---
175	L-CS-172-RP-01	---	L-CS-172-RP-01	---	---
176	---	---	---	---	---
177	L-CS-163-RP-01	---	---	---	---
178	---	---	---	---	---
179	L-CS-163-RP-01	---	---	---	---

L-C-3/C*10 W/1*10 GND
TO L-CS-107-MC-01
DWG LA-E-100
L-CS-160-HC-13
1/2" C-3/C*2 W/1*6 GND
(SEE NOTE 5)

L-CS-160-SV-18

LA-E-401
TELEPHONE PBX & BACKBOARD



LIGO-D961008-01-0

LASER INTERFEROMETER GRAVITATIONAL-WAVE OBSERVATORY SITE NO. 2 - LIVINGSTON, LOUISIANA

ELECTRICAL CORNER STATION OSB LAB AREA RECEPTACLE & POWER PLAN

NONE PPI50969 8094

LA-E-106

PARSONS

100 WEST WALNUT STREET PASADENA, CALIFORNIA

LIGO

CALIFORNIA INSTITUTE OF TECHNOLOGY MASSACHUSETTS INSTITUTE OF TECHNOLOGY

AS-BUILT DRAWINGS

ISSUED FOR AS-BUILT

NO. DATE BY CHKD ENGR PROJ DESCRIPTION

1	8-7-98	JE	AK	NW	---	ISSUED FOR AS-BUILT
---	--------	----	----	----	-----	---------------------