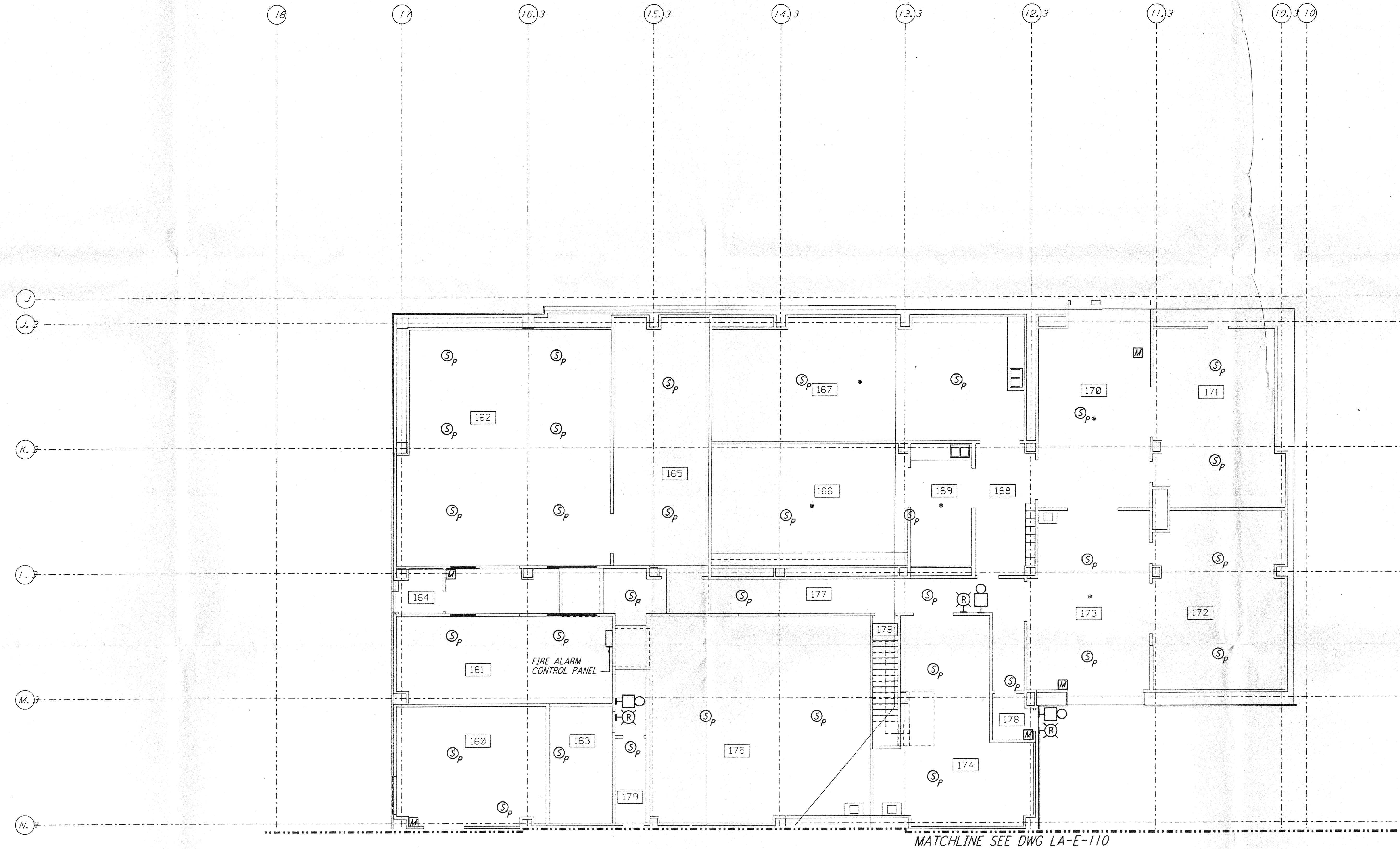
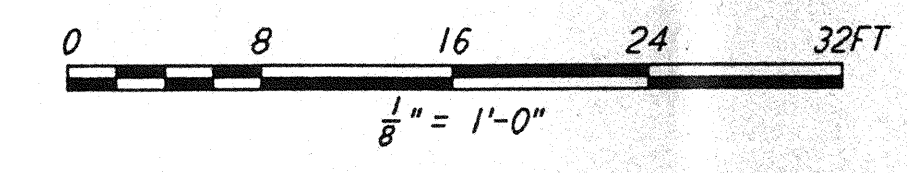
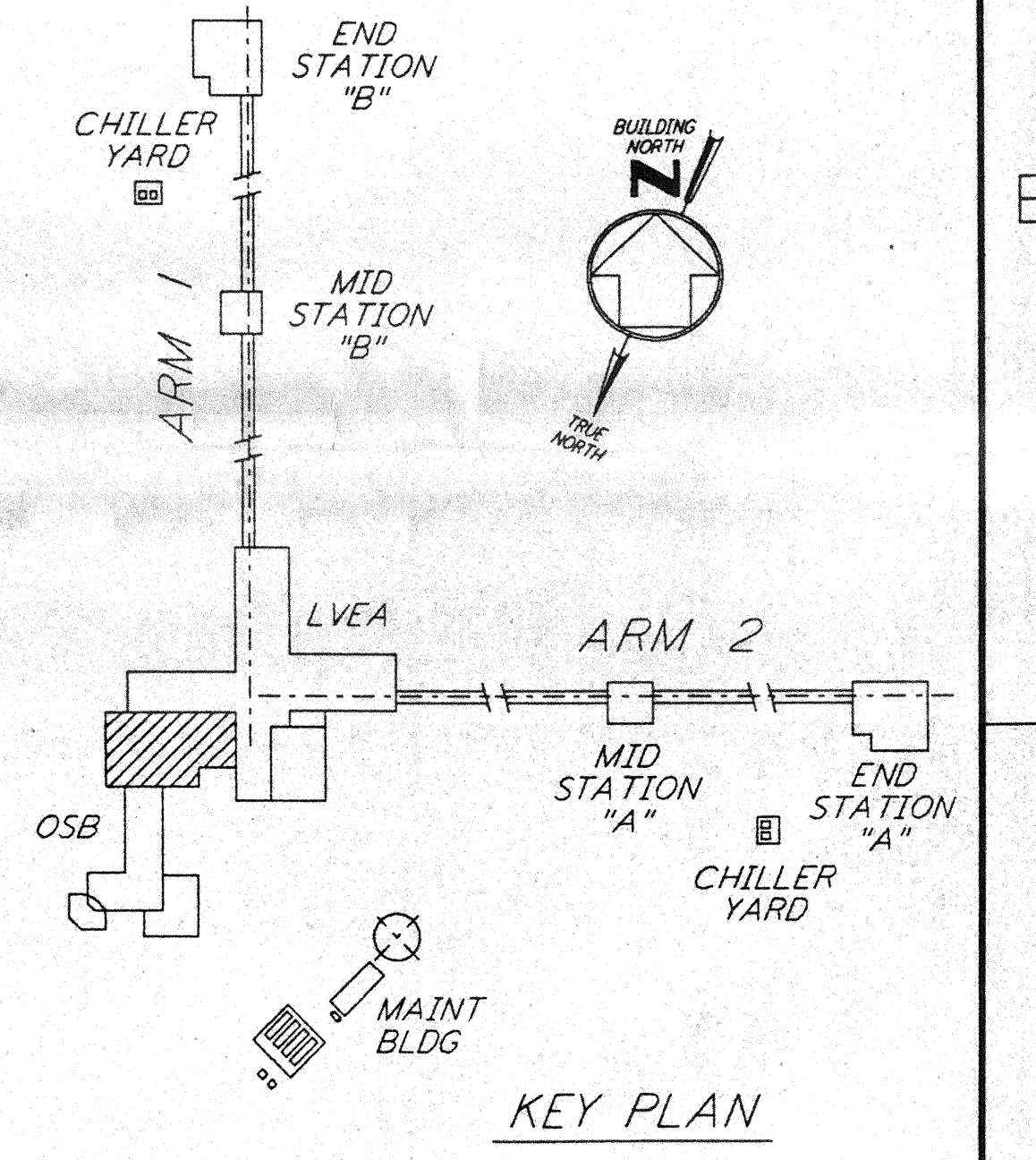


- NOTES:**
1. FOR PLAN SYMBOLS SEE DWG LA-E-002.
 2. WIRING FOR FIRE DETECTION SHALL BE CLASS "A". FOR FIRE ALARM DEVICES SHALL BE CLASS "B". WIRING INSTALLED IN CONCEALED CONDUIT FOR FIRE DETECTION AND SECURITY SYSTEMS SHALL BE DONE BY OTHERS.
 3. DUCT MOUNTED SMOKE DETECTORS SHALL BE PROVIDED WITH AN AUXILIARY RELAY CONTACT (N.C.) FOR EQUIPMENT SHUT-DOWN.
 4. COORDINATE SMOKE DETECTOR LOCATIONS WITH CLEAN AGENT DISCHARGE NOZZLES.
 5. COORDINATE AHU LOCATIONS WITH DUCT MOUNTED SMOKE DETECTORS.

This document and the design it covers are the property of **PARSONS**. They are loaned only with the borrower's expressed written agreement that they will not be reproduced, copied, loaned, exhibited, or used in any other way, except by written consent from **PARSONS** to the borrower.



MATCHLINE SEE DWG LA-E-110



NO.	DATE	BY	CHKD	ENGR	PROJ	DESCRIPTION

ISSUED FOR CONSTRUCTION	
DRAWN	M. M. 11-15-96
CHECKED	JCL 7-24-96
ENGINEER	RCR 10-25-96
PROJ	SPR 11/17/96



762 C. L. Kenna
15 Oct 96

PARSONS
 100 WEST WALNUT STREET
 PASADENA, CALIFORNIA

LIGO
 CALIFORNIA INSTITUTE OF TECHNOLOGY
 MASSACHUSETTS INSTITUTE OF TECHNOLOGY

LASER INTERFEROMETER
 GRAVITATIONAL-WAVE OBSERVATORY
 SITE NO. 2 - LIVINGSTON, LOUISIANA

**ELECTRICAL CORNER STATION
 OSB LAB AREA FIRE DET & SECURITY PLAN**

SCALE: AS NOTED CONTRACT NUMBER: PPI50969 PROJECT NUMBER: 8094
 SHEET NUMBER: **LA-E-111**