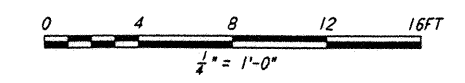
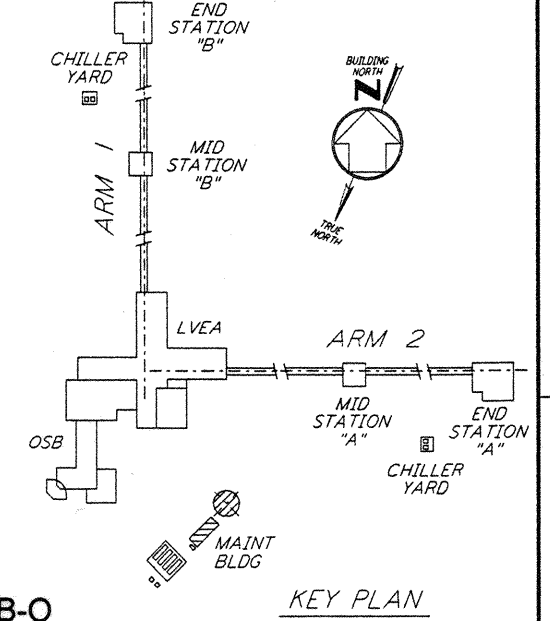


PANEL L-CS-192-RP-01		LOCATION TOP		MOUNTING SURFACE		VOLTS 208Y/120V							
FED FROM	CKT #	PHASE	WIRE	FEEDER	MAIN	BUS 100A							
L-CS-192-LP-01	1, 3, 5	3	3										
CKT	LOAD SERVED	SLOT	POLES	WIRE SIZE	BKR	VOLT AMPS	PHASE LOAD (VA)	WIRE SIZE	BKR	VOLT AMPS	LOAD SERVED	CKT	
1	F. W. HEAT TRACE (GFCD)	1	1	20	500	500	A B C		20	1	2	SPARE	2
3	P. W. HEAT TRACE (GFCD)	3	1	20	200	200		1000	20	1	4	RECEPTS RM 192, 196	4
5	RECEPTS OUTSIDE (GFCD)	5	1	20	720	720		720	20	1	6	RECEPTS RM 194	6
7	SPARE	7	2	20				1000	20	1	8	RECEPTS RM 194, 195	8
9		9	-					900	20	1	10	RECEPTS RM 195	10
11	SPACE	11						200	15	1	12	HVAC CONTROLS CP04, CP05	12
13		13											14
15		15											16
17		17											18
19		19											20
21		21											22
23		23											24
25		25											26
27		27											28
29		29											30
31		31											32
33		33											34
35		35											36
37		37											38
39		39											40
41		41											42
TOTAL						1500	2100	1640					
						(AMPS)	5400						

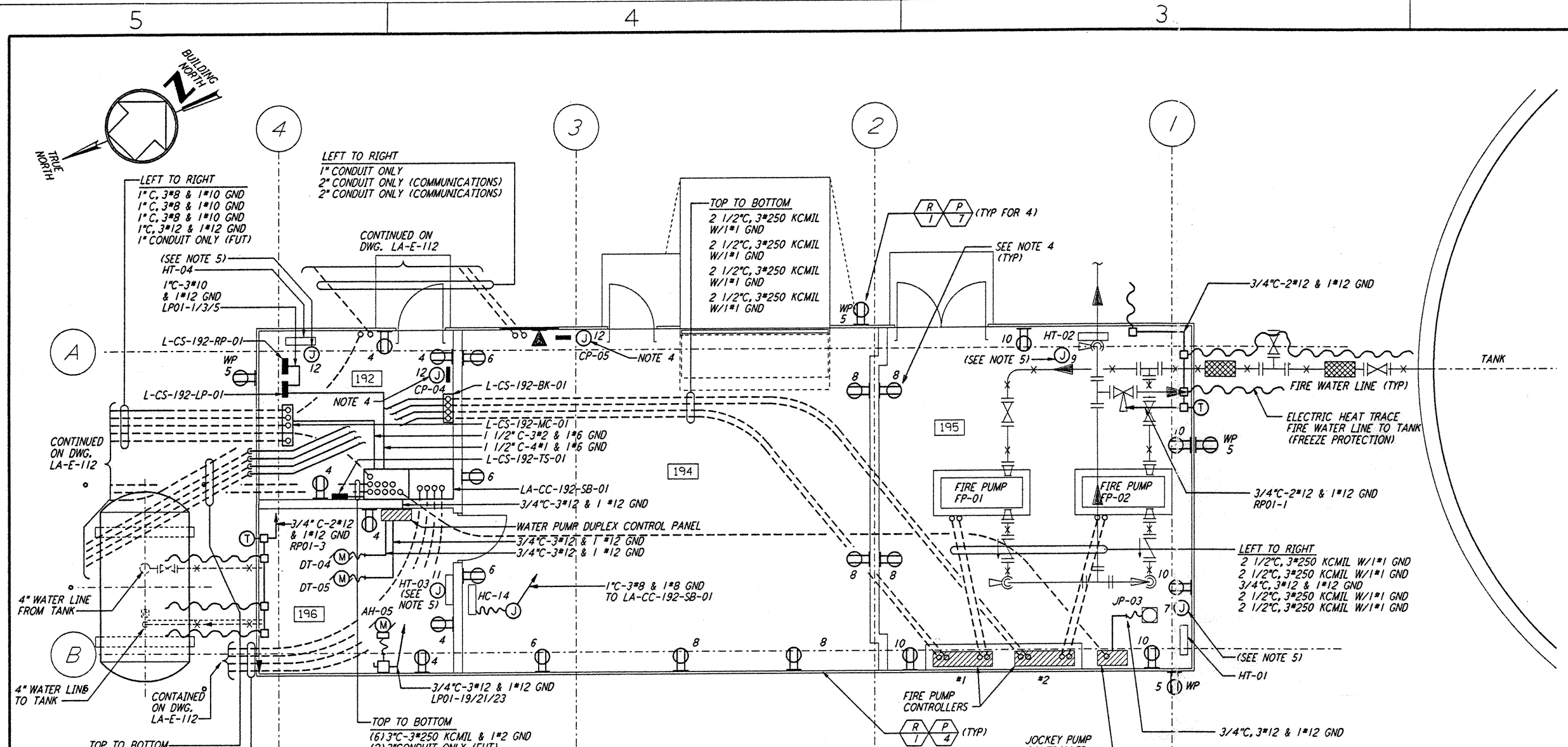
PANEL L-CS-192-LP-01		LOCATION TOP		MOUNTING SURFACE		VOLTS 480Y/277V							
FED FROM	CKT #	PHASE	WIRE	FEEDER	MAIN	BUS 100A							
L-CS-192-RP-01	TB0	3	4										
CKT	LOAD SERVED	SLOT	POLES	WIRE SIZE	BKR	VOLT AMPS	PHASE LOAD (VA)	WIRE SIZE	BKR	VOLT AMPS	LOAD SERVED	CKT	
1	L-CS-192-RP-01	1	3	30	15000	5000	A B C	288	15	1	2	LIGHTING RM 192, 196	2
3		3	-					864	15	1	4	LIGHTING RM 194	4
5		5	-					576	15	1	6	LIGHTING RM 195	6
7	HEATER L-CS-195-HT-01	7	1	15	1500	220		330	15	1	8	LIGHTING OUTSIDE	8
9	HEATER L-CS-195-HT-02	9	1	15	1500	1500		60	15	1	10	EMERGENCY LIGHTING	10
11	HEATER L-CS-196-HT-03	11	1	15	1500	1500		1500	15	1	12	HEATER L-CS-196-HT-04	12
13	SPACE	13	3					15	15	1	14	SPACE	14
15		15	-					15	15	1	16	SPACE	16
17		17	-					15	15	1	18	SPACE	18
19	L-CS-191-AH-05	19	3	20	1500	500					20	SPACE	20
21		21	-					500			22	SPACE	22
23		23	-					500			24	SPACE	24
25		25											26
27		27											28
29		29											30
31		31											32
33		33											34
35		35											36
37		37											38
39		39											40
41		41											42
TOTAL						7618	7924	9076					
						(AMPS)	24618						

NOTES:

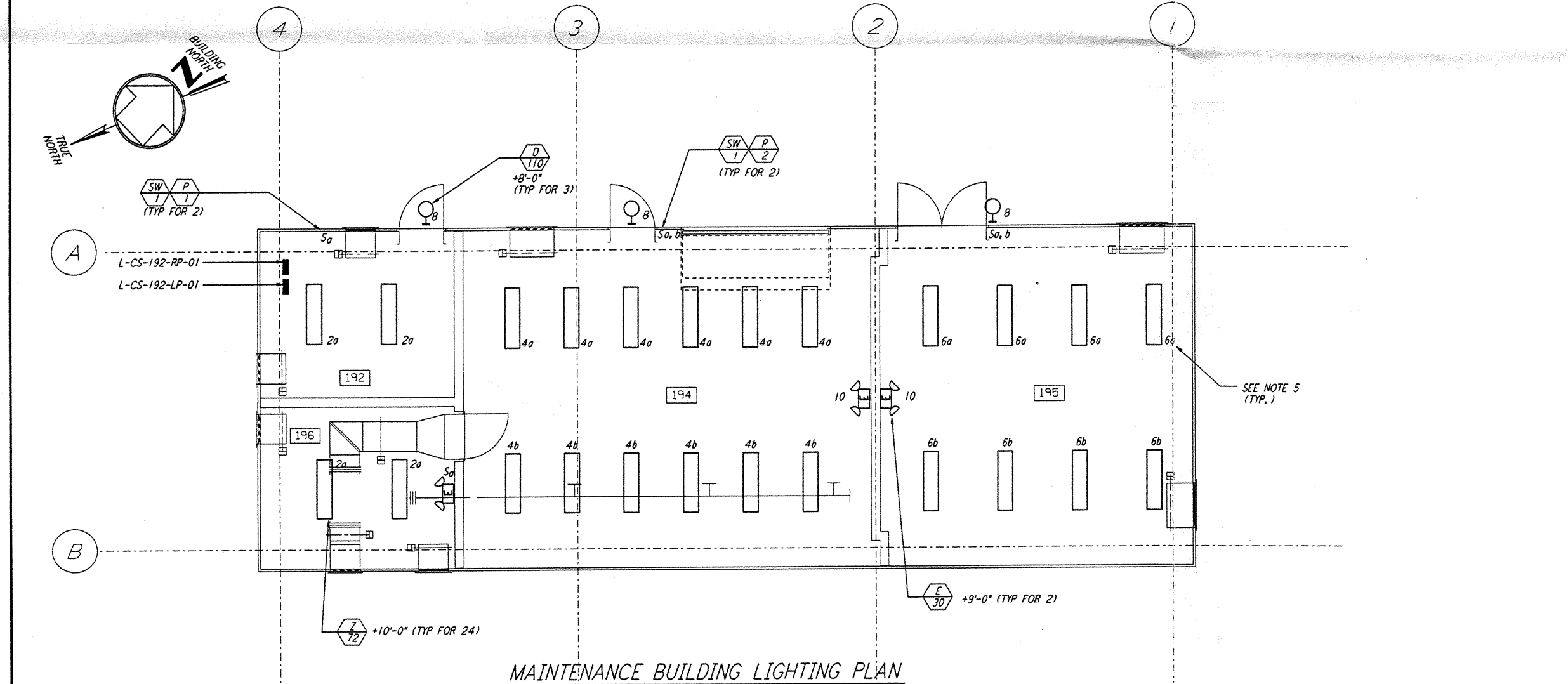
- FOR GENERAL NOTES AND REFERENCE DWG SEE LA-E-103.
- PANEL L-CS-192-RP-01 SHALL BE SQUARE D CLASS 7400 MINI-POWER-ZONE, INTEGRAL 15KVA 3Ø TRANSFORMER, 12-POLE, TYPE 00B BREAKERS.
- ALL LIGHTING CIRCUITS SHOWN ON THE LIGHTING PLAN ARE FROM PANEL L-CS-192-LP-01.
- ALL RECEPTACLE CIRCUITS SHOWN ON THE POWER PLAN ARE FROM PANEL L-CS-192-RP-01 UNLESS OTHERWISE NOTED.
- CIRCUITS SHOWN FEEDING THESE ITEM ARE FROM PANEL L-CS-192-LP-01.



LIGO-D961015-B-0



MAINTENANCE BUILDING POWER PLAN
 1/4" = 1'-0" (SEE NOTE 4)



MAINTENANCE BUILDING LIGHTING PLAN
 1/4" = 1'-0" (SEE NOTE 3)

This document and the design it covers are the property of PARSONS. They are loaned only with the borrower's expressed written agreement that they will not be reproduced, copied, loaned, exhibited, or used in any other way, except by written consent from PARSONS.

NO.	DATE	BY	CHKD	ENGR	PROJ	DESCRIPTION
B	6-14-96	JCL	JCL	TDM		FINAL DESIGN REVIEW
A	10-31-95			TDM		PRELIMINARY DESIGN REVIEW

DRAWN	M. M.
CHECKED	
ENGINEER	
PROJ	

PARSONS
 100 WEST WALNUT STREET
 PASADENA, CALIFORNIA

LIGO
 CALIFORNIA INSTITUTE OF TECHNOLOGY
 MASSACHUSETTS INSTITUTE OF TECHNOLOGY

LASER INTERFEROMETER
 GRAVITATIONAL-WAVE OBSERVATORY
 SITE NO. 2 - LIVINGSTON, LOUISIANA

ELECTRICAL
 CORNER STATION
 CHILLER PLANT & MAINT
 BLDG POWER & LIGHTING PLANS

AS NOTED PPI50969 8094
LA-E-113